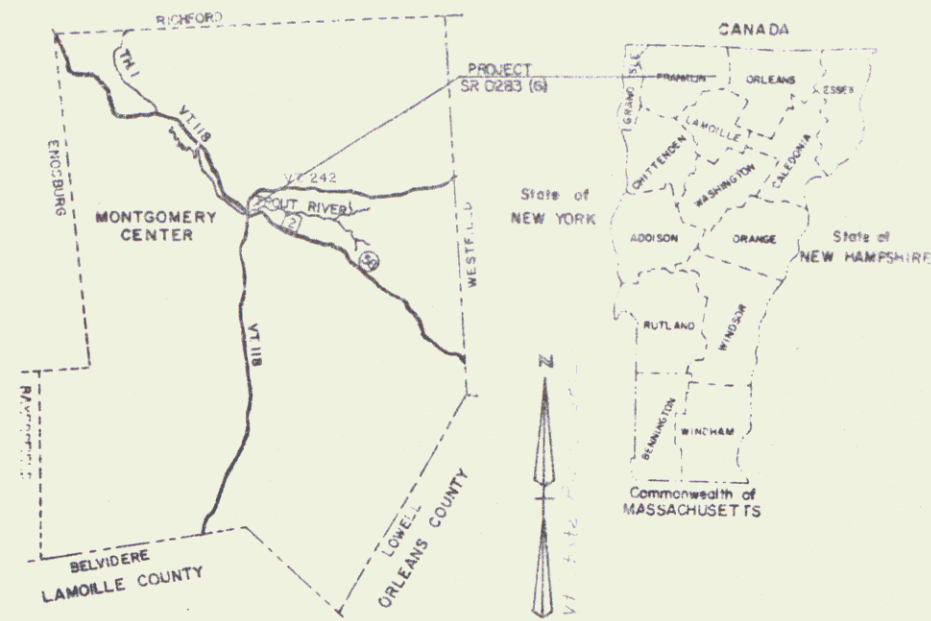


INDEX OF SHEETS

STATE OF VERMONT AGENCY OF TRANSPORTATION



PROPOSED IMPROVEMENT TOWN OF MONTGOMERY COUNTY OF FRANKLIN VT. ROUTE 118 BRIDGE NO. 15



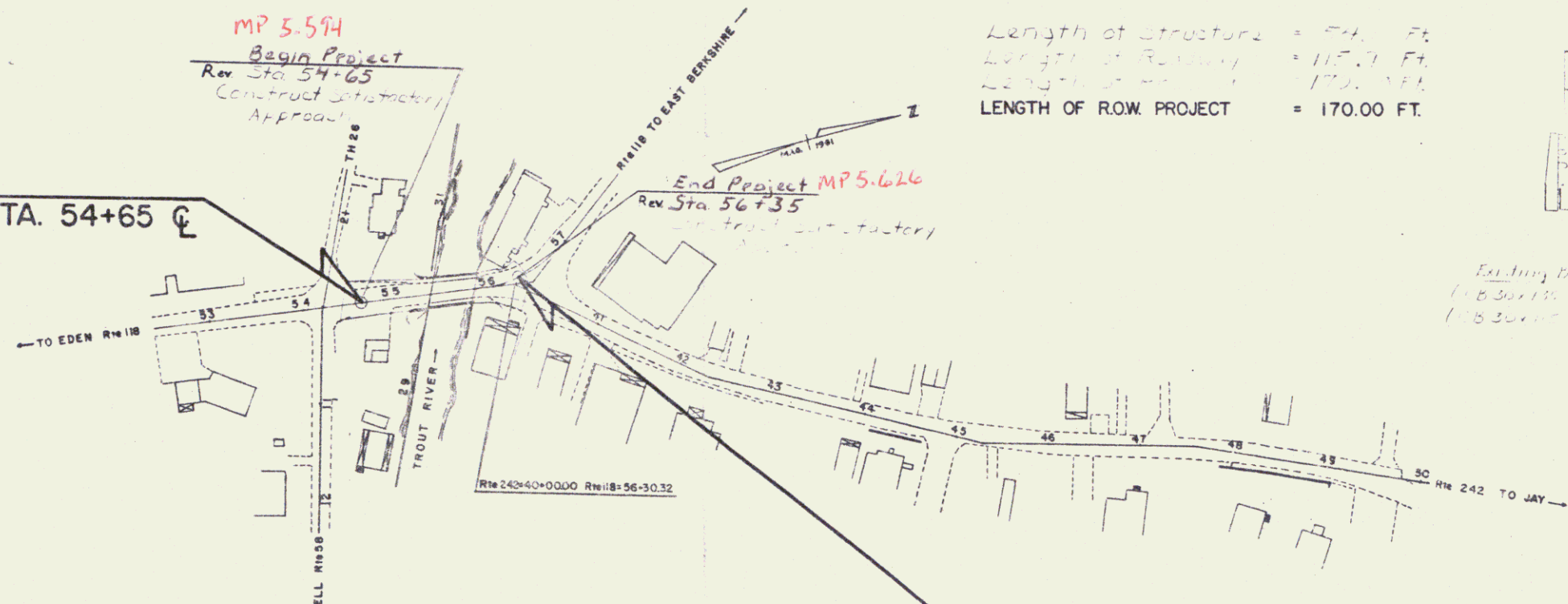
R.O.W. PLANS

Project Location: BHS 0283(6) SR 118, 0.24 miles east of the intersection of Rte 118 and Rte 242.
Project Description: Replace existing concrete arch and abutment with a 2-span, 172.00 ft. long, 17 ft. deep, reinforced concrete arch bridge, including 10 ft. wide sidewalks and 10 ft. wide shoulders.

Length of Structure = 172.00 Ft.
Length of Footing = 115.00 Ft.
Length of Approach = 172.00 Ft.
LENGTH OF R.O.W. PROJECT = 170.00 FT.

BEGIN R.O.W. PROJECT
BHS 0283(6)S REV. STA. 54+65

END R.O.W. PROJECT
BHS 0283(6)S REV. STA. 56+35

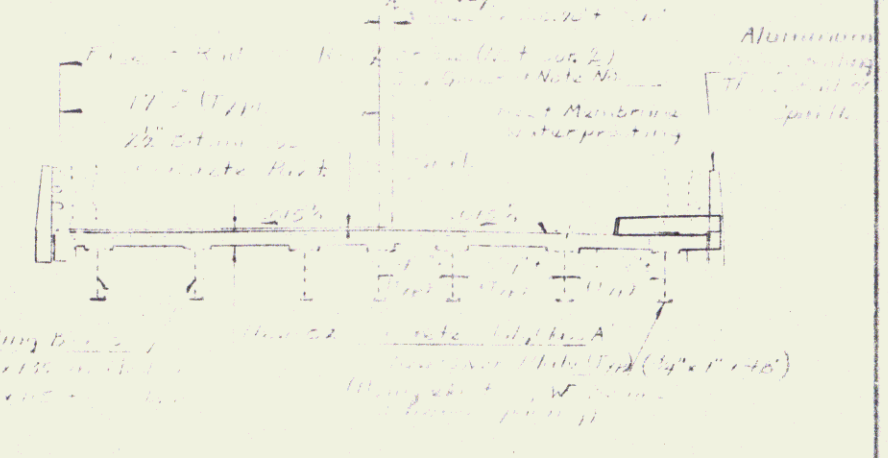
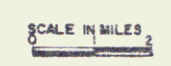
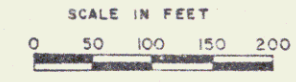


CONVENTIONAL SIGNS

COUNTY LINE	---
TOWN LINE	---
LIMITS OF ACCESS	---
POINT OF ACCESS	X
FENCE LINE	---
STONE WALL	---
TRAVELED WAY	---
GUARD RAIL	---
RAILROAD	---
SURVEY LINE	---
CULVERT	---
POWER POLE	○
TELEPHONE POLE	○
TREES	○
CONTROL OF ACCESS	---
PROPERTY LINE	---
R.O.W. TAKING LINE	---
SLOPE RIGHTS	○
TOP OF CUT	○
TOE OF SLOPE	○

DATUM

VERTICAL	NGVD 1929
HORIZONTAL	N/A



RIGHT-OF-WAY DIVISION
TOWN FILE Pin # 78E151
PERPETUAL Date 11/24/1989
Town of Montgomery
(To Be Returned To R.O.W. Division)

HYDRAULIC DATA
DRAINAGE AREA = 23.4 SQ. MI.
Q₁₀ = 2250 CFS ; HW ELEV. = 522.7
Q₂₅ = 3000 CFS ; HW ELEV. = 524.1
Q₅₀ = 3600 CFS ; HW ELEV. = 525.1
Q₁₀₀ = 4500 CFS ; HW ELEV. = 526.5
TAILWATER ELEVATION @ Q₁₀₀ = 504.62
VELOCITY THROUGH BRIDGE @ Q₁₀₀ = 9.0 FPS

These plans are subject to such engineering changes as may be required by the Federal Highway Administration or the Director of Engineering and Construction.

Construction is to be carried on in accordance with these plans and the Standard Specifications for Highway and Bridge Construction dated March, 1976, as approved by the Federal Highway Administration on October 27, 1976 for use on this project, including all subsequent revisions and such revised specifications and special provisions as are incorporated in these plans.

APPROVED	DATE
CHIEF, PROPERTY ADMINISTRATION	

SUBMITTED BY ORDER OF THE STATE TRANSPORTATION BOARD	DATE
APPROVED	DATE
DIRECTOR OF ENGINEERING AND CONSTRUCTION	

DEPARTMENT OF TRANSPORTATION
FEDERAL HIGHWAY ADMINISTRATION

APPROVED	DATE
DIVISION ADMINISTRATOR	

MONTGOMERY
BHS 0283(6)S
SHEET 1 OF 3 SHEETS

Trout River
 Junction VT Rte. 113, VT Rte.
 58 & TH 26



MAG. 1981

Approach Rail - 2 Rail Aluminum
 Lt. 55+19 ~ 55+41 Rt. 55+04 ~ 55+31
 55+45 ~ 56+18 55+85 ~ 56+06

Aluminum Bridge Rail - 3 Rail 1/2 Spindle
 Lt. 55+41 ~ 55+95 Rt. 55+31 ~ 55+85

Retaining Concrete Pavement
 Lt. 54+42 ~ 56+45

Rev. Curve Data
 Δ = 43° 46' 23"
 R = 150.00
 L = 115.26
 E = 11.73

Rev. PT 57+02.38
 Rt. 242
 N 20° 05' W

Rev. PI 52+52.72
 50° 21' 27"
 Δ = 43° 46' 23"

1983
 (2003)

Traffic Data
 Junction VT Rte.
 113 & Vt. Rte. 242

DATUM
 VERTICAL: N.G.V.D. 1929
 HORIZONTAL: N/A

SURVEYED BY: Fall DATE: Jan. 81
 DRAWN BY: SK [unclear] DATE: May 81
 TRACED BY: SK [unclear] DATE: May 81
 Montgomery
 PROJ. BHS NO. 0283 (6)S
 SHEET 2A OF

3
 C03-001A