

**SPECIAL LITCH W/STONE FILL**

STA.	STA.	LOCATION	TYPE
REV 253+13	253+40	LEFT	I
REV 253+40	253+16	RIGHT	I
REV 253+16	253+35	RIGHT	I
REV 253+35	253+16	LEFT	I

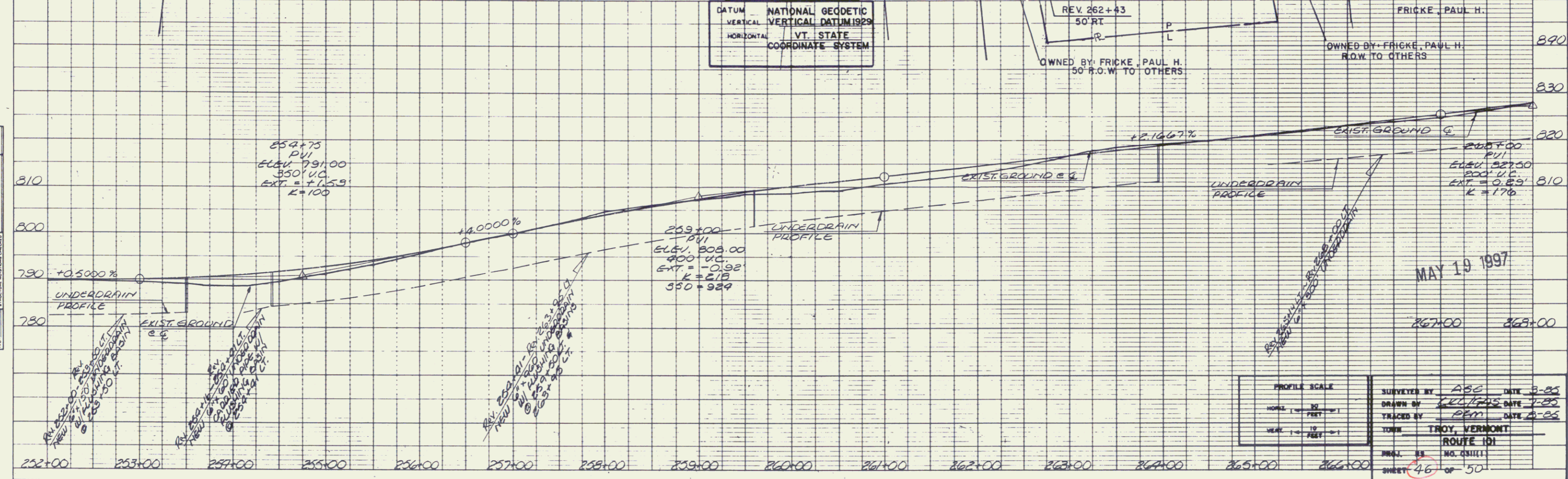
**CONSTRUCT DRIVE**

STA.	LOCATION	TYPE	WIDTH
REV 252+03	LEFT	GRAVEL	12 FT.
REV 252+75	LEFT	GRAVEL	12 FT.
REV 253+03	RIGHT	GRAVEL	16 FT.
REV 253+72	LEFT	GRAVEL	12 FT.
REV 254+75	RIGHT	GRAVEL	12 FT.
REV 255+23	RIGHT	GRAVEL	12 FT.

**EROSION MATTING**

STA.	LOCATION	TYPE	WIDTH
REV 257+10	LEFT	GRAVEL	12 FT.
REV 259+34	LEFT	PAVE	16 FT.
REV 262+06	RIGHT	GRAVEL	16 FT.
REV 263+07	RIGHT	GRAVEL	16 FT.
REV 263+93	LEFT	GRAVEL	15 FT.
REV 264+93	RIGHT	GRAVEL	16 FT.
REV 264+93	LEFT	GRAVEL	15 FT.
REV 265+02	RIGHT	GRAVEL	14 FT.

**PROFILE**  
 QUANTITY  
 NOTE BOOK  
 NO.



DATUM: NATIONAL GEODETIC VERTICAL DATUM 1929  
 HORIZONTAL: VT. STATE COORDINATE SYSTEM

**PROFILE SCALE**  
 HORIZ. 1" = 40' FEET  
 VERT. 1" = 4 FEET

SURVEYED BY: ABC DATE: 3-85  
 DRAWN BY: JKL DATE: 4-85  
 CHECKED BY: PQR DATE: 5-85  
 TYPE: TROY, VERMONT  
 ROUTE 101  
 PROJ. NO. 031111  
 SHEET 46 OF 50