

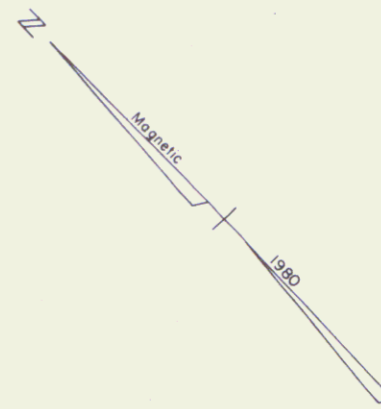
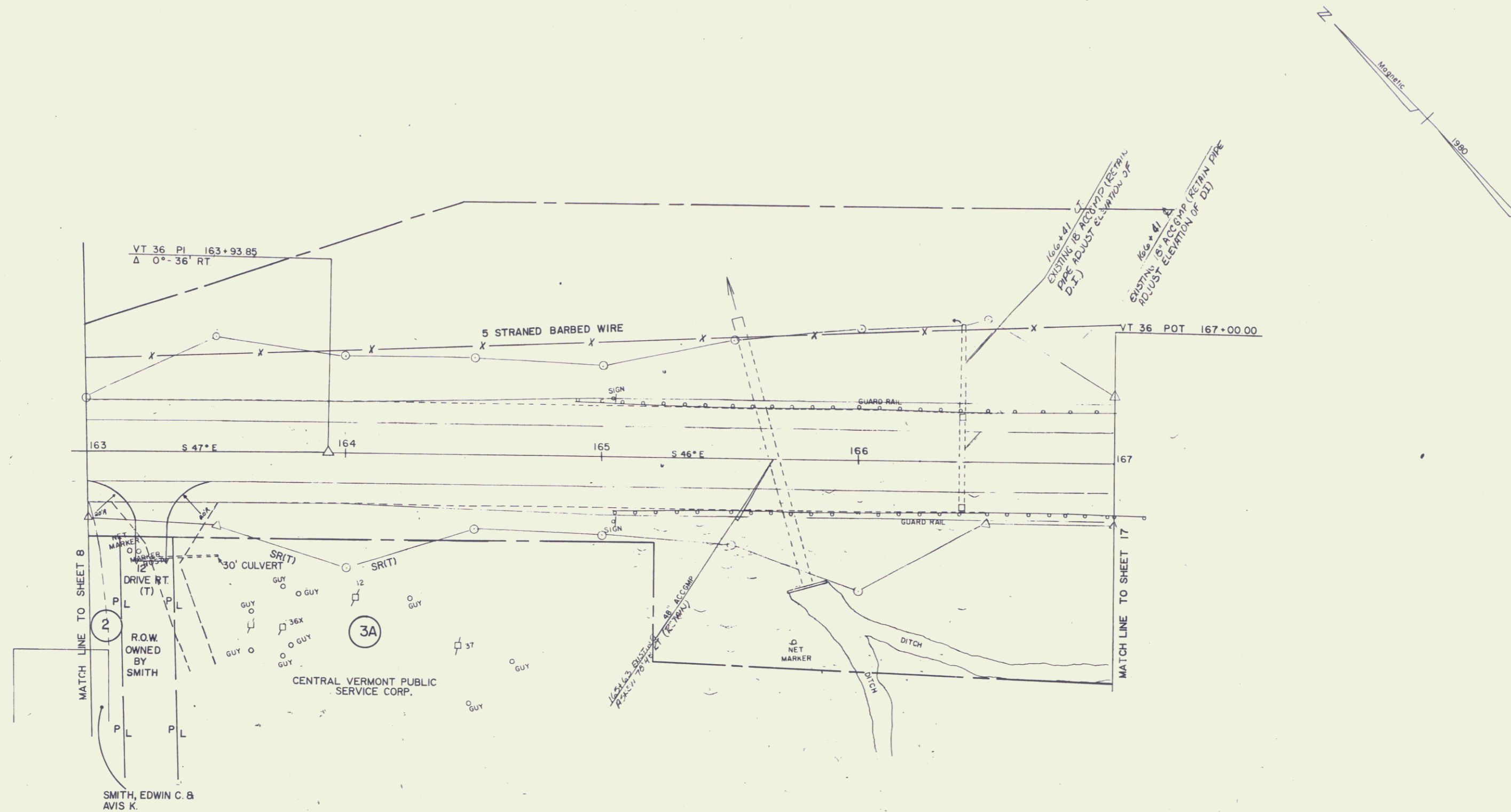
REMOVING & RESETTING
GUARD RAIL
163+99 ~ 167+00 RT.
164+43.5 ~ 167+00 LT.

165+00 ~ 167+00
Remove existing Bituminous material
and add Subbase, Base, and surface
courses as necessary.

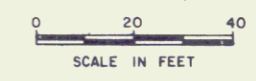
CONSTRUCT DRIVE
163+25 RT.

TREATED TIMBER CURB
166+41 LT. ~ 167+00 LT.
166+41 RT. ~ 167+00 RT.

CHANGING ELEVATION OF DROP INLETS
CATCH BASINS OR MANHOLES
166+41 LT.
166+41 RT.



DATUM
VERTICAL NGVD 1929
HORIZONTAL N/A



R.O.W. PLANS
VT 36 STA 163+00 - STA 167+00

ST. ALBANS
RS 0279(2)
SHEET 14 OF 17

15