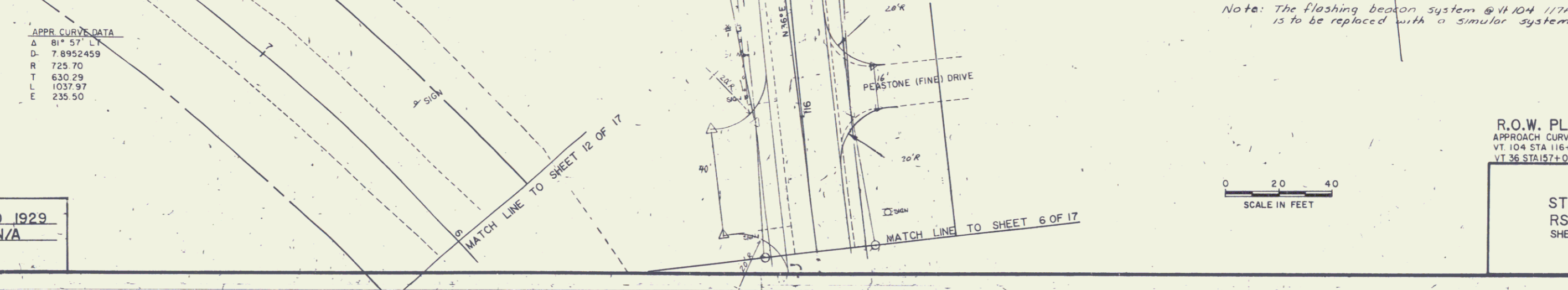
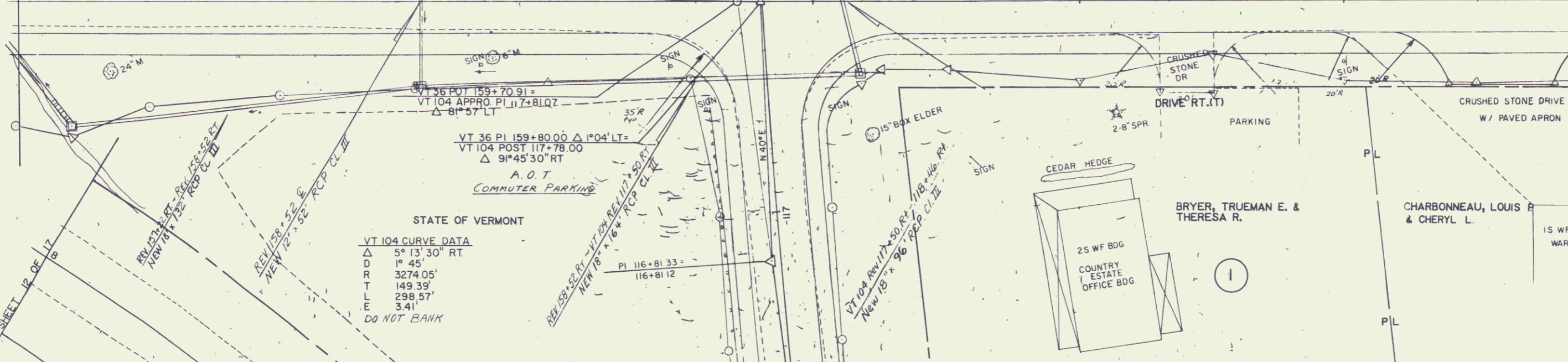
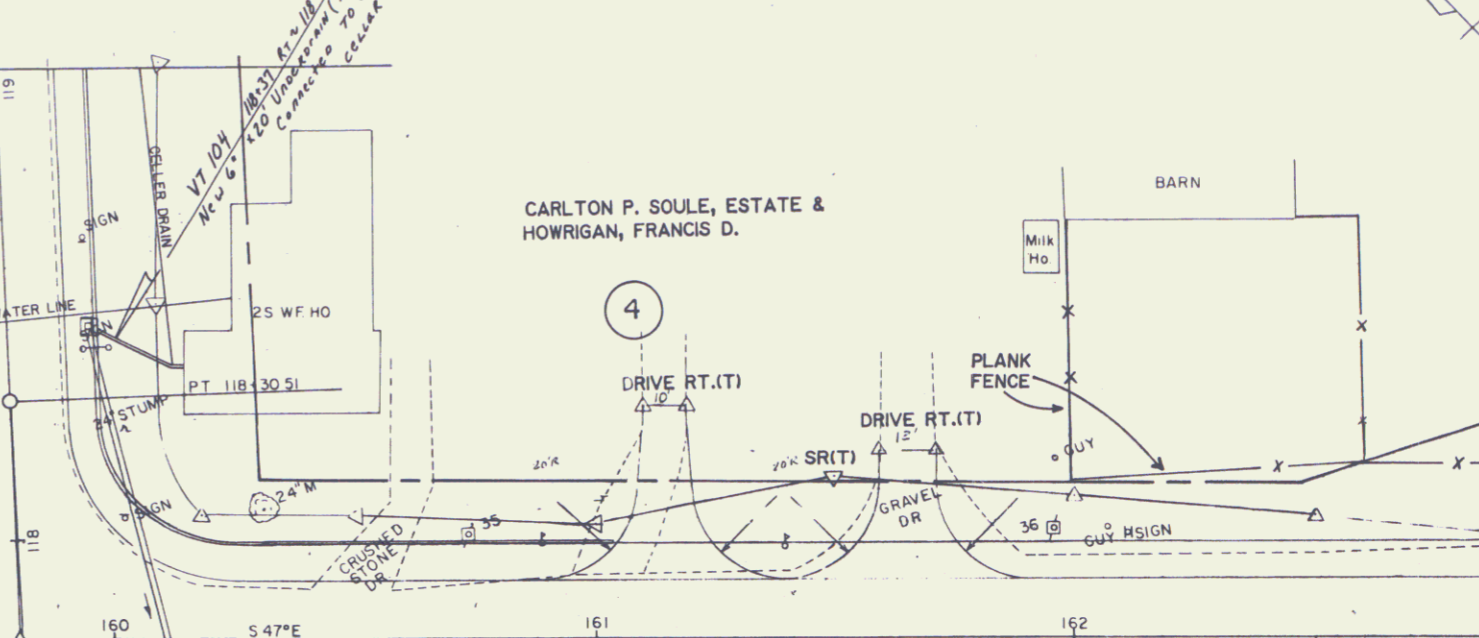
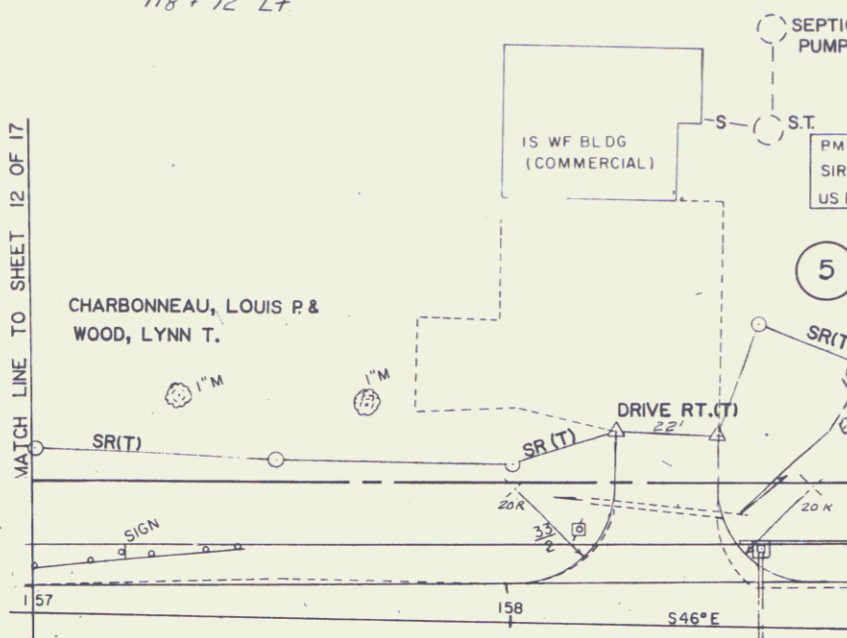
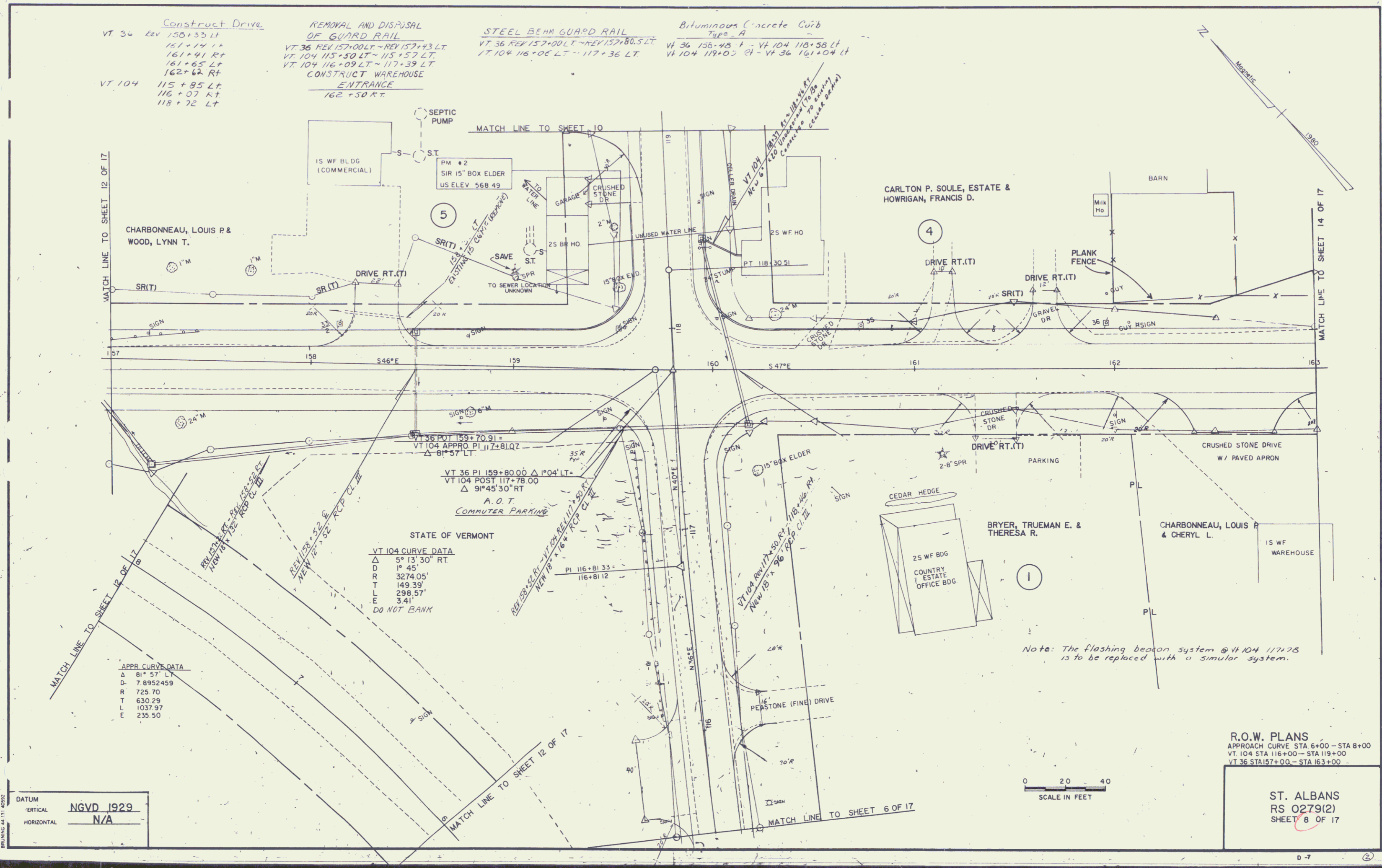


Construct Drive
 VT 36 Lev 158+35 LT
 161+41 Lt
 161+41 Rt
 161+65 Lt
 162+62 Rt
 VT 104 115+85 Lt
 116+07 Rt
 118+72 Lt

REMOVAL AND DISPOSAL
 OF GUARD RAIL
 VT 36 REV 157+00 LT - REV 157+43 LT
 VT 104 113+50 LT - 113+57 LT
 VT 104 116+09 LT - 117+39 LT
 CONSTRUCT WAREHOUSE
 ENTRANCE
 162+50 RT.

STEEL BEAM GUARD RAIL
 VT 36 REV 157+00 LT - REV 157+80.5 LT
 VT 104 116+06 LT - 117+36 LT

Bituminous Concrete Curb
 Type A
 VT 36 158+48 Lt - VT 104 118+38 Lt
 VT 104 119+02 Lt - VT 36 161+04 Lt



STATE OF VERMONT
 VT 104 CURVE DATA
 Δ 5° 13' 30" RT
 D 19' 45"
 R 3274.05'
 T 149.39'
 L 298.57'
 E 3.41'
 DO NOT BANK

APPR CURVE DATA
 Δ 81° 57' LT
 D 7.8952459
 R 725.70
 T 630.29
 L 1037.97
 E 235.50

Note: The flashing beacon system @ VT 104 117+78 is to be replaced with a similar system.

R.O.W. PLANS
 APPROACH CURVE STA 6+00 - STA 8+00
 VT 104 STA 116+00 - STA 119+00
 VT 36 STA 157+00 - STA 163+00

DATUM
 VERTICAL NGVD 1929
 HORIZONTAL N/A

0 20 40
 SCALE IN FEET

ST. ALBANS
 RS 0279(2)
 SHEET 8 OF 17