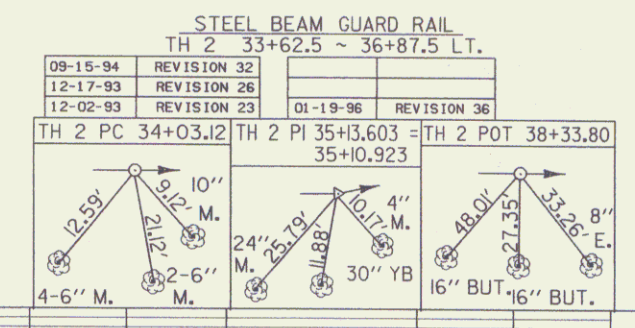
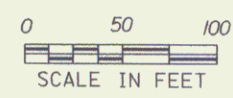


- GRUBBING MATERIAL
2 34+00 LT. ~ 37+25 LT.
- EXCAVATION OF SURFACES AND PAVEMENTS (AREA TO BE TOPSOILED, SEEDED AND MULCHED)
OLD TH 2 SURV. 31+50 ~ 33+75 LT.
- CONSTRUCT DRIVE
TH 2 34+88 RT. (GRAVEL)
TH 2 36+50 RT. (GRAVEL)
- DRIVE GATE FOR WOVEN WIRE FENCE
TH 2 34+88 RT. (16' WIDE)
(2 - 8' GATES W/ OPENING IN MIDDLE)
- REMOVAL AND DISPOSAL OF GUARD RAIL
TH 2 31+50 ~ 32+54 LT.
TH 2 33+00 ~ 37+07 LT.
- REMOVAL OF EXISTING FENCE
TH 2 31+50 ~ 35+00 RT.

FOR DRAINAGE NOTES SEE ROW SHEET 18 OF 20 SHEETS

END RELINQUISHMENT NO. II STA. T.H. 2 37+68 2' RT.

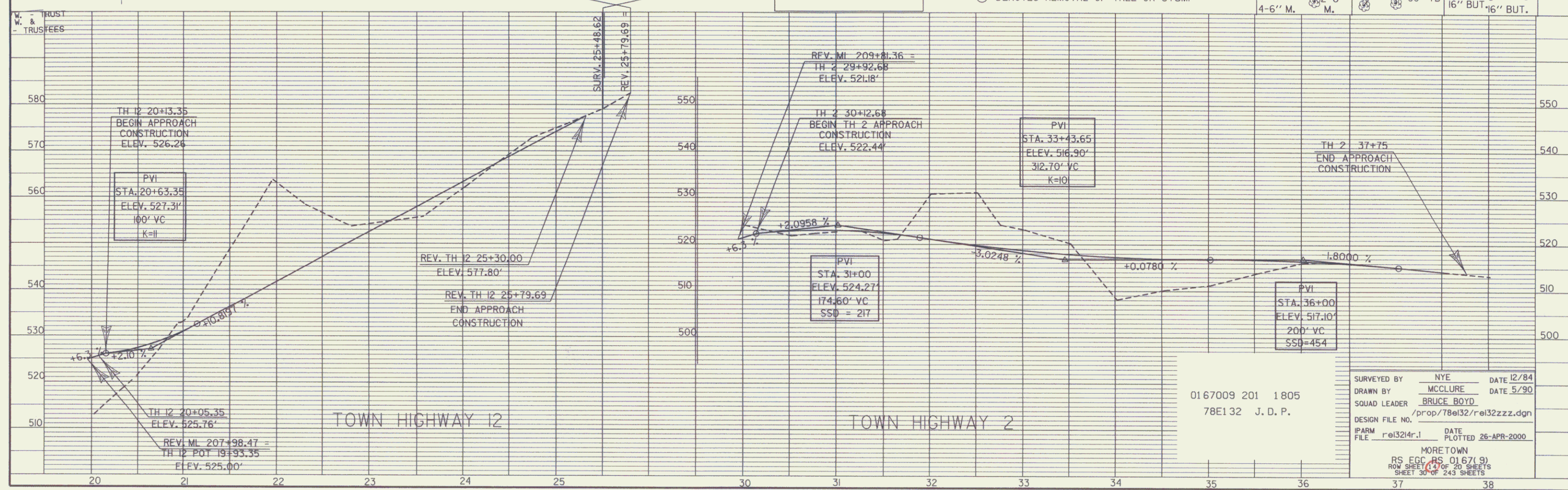
FOR R.O.W. USE ONLY



DATUM

VERTICAL	NGVD 1929
HORIZONTAL	N/A

○ DENOTES REMOVAL OF TREE OR STUMP



0167009 201 1805
78E132 J. D. P.

SURVEYED BY	NYE	DATE	12/84
DRAWN BY	MCCURE	DATE	5/90
SQUAD LEADER	BRUCE BOYD		
DESIGN FILE NO.	/prop/78e132/rel32zzz.dgn		
PARM FILE	rel324r.l	DATE PLOTTED	26-APR-2000
MORE TOWN RS EGG RS 0167(9) ROW SHEET 17 OF 20 SHEETS SHEET 30 OF 243 SHEETS			

MAR 23 2006 14