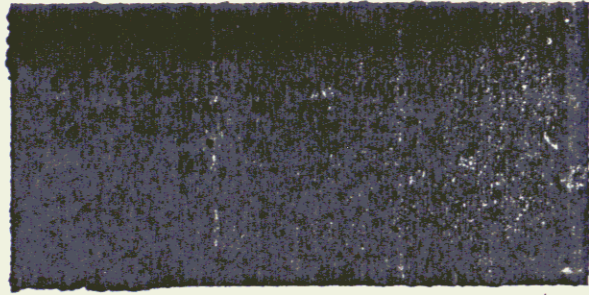


INDEX OF SHEETS



STATE OF VERMONT AGENCY OF TRANSPORTATION

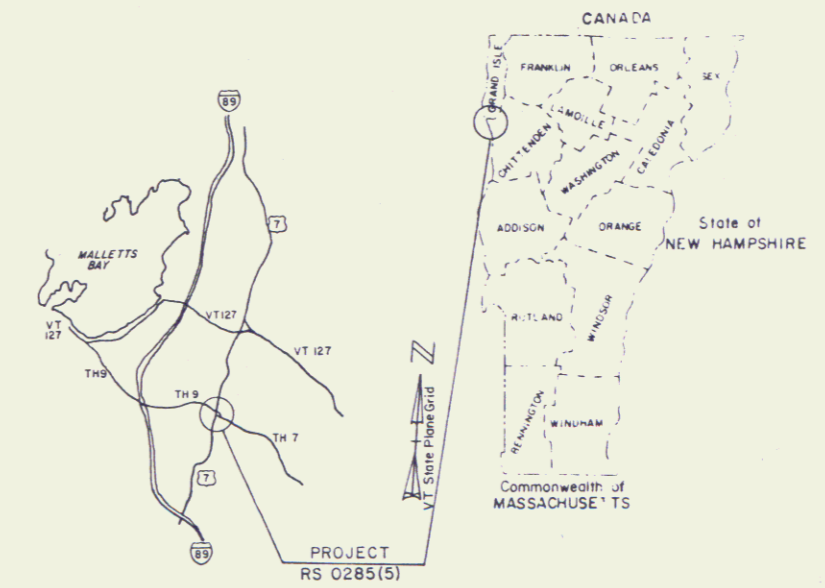


PROPOSED IMPROVEMENT TOWN OF COLCHESTER COUNTY OF CHITTENDEN

TOWN HIGHWAY 7, CLASS 2

BEGINNING AT THE INTERSECTION OF U.S. ROUTE 7 AND TOWN HIGHWAY 9, AND EXTENDING SOUTHEASTERLY FOR APPROXIMATELY 989 FEET ALONG RELOCATED TOWN HIGHWAY 7.

LENGTH OF PROJECT 989 FEET 0.187 MILES
LENGTH OF R.O.W. PROJECT = 1449 FEET = 0.273 MILES
WORK TO BE PERFORMED UNDER THIS PROJECT INCLUDES GRADING, DRAINAGE, SUB-BASE, AND PAVEMENT FOR A TOWN HIGHWAY ON NEW LOCATION.



VICINITY MAP
Scale in Miles

R.O.W. PLANS

BEGIN R.O.W. PROJECT RS 0285(5)
STA. 7+06 RT.

- CONVENTIONAL SIGNS
- COUNTY LINE
 - TOWN LINE
 - LIMITS OF ACCESS
 - POINT OF ACCESS
 - FENCE LINE
 - STONE WALL
 - TRAVELED WAY
 - GUARD RAIL
 - RAILROAD
 - SURVEY LINE
 - CULVERT
 - POWER POLE
 - TELEPHONE POLE
 - TREES
 - CONTROL OF ACCESS
 - PROPERTY LINE
 - R.O.W. TAKING LINE
 - SLOPE RIGHTS
 - TOP OF CUT
 - TOE OF SLOPE

BEGIN RELINQUISHMENT NO. III
BEGIN RELINQUISHMENT NO. I
STA. 7+06 CL

T.H. 9 Sta. 7+50
BEGIN APPROACH

T.H. 9 Sta. 9+72
END APPROACH

T.H. 7 Sta. 10+11
BEGIN PROJECT RS 0285(5)

END RELINQUISHMENT I
BEGIN MAINT. AGREE. AREA NO. I
9+53 CL

END RELINQUISHMENT NO. III
STA. 9+72 75' RT.

END MAINT. AGREE. AREA NO. I
BEGIN RELINQUISHMENT NO. II
10+27 CL

END RELINQUISHMENT NO. I
STA. 21+35 CL

END R.O.W. PROJECT RS 0285(5)
STA. 21+40 LT.

MP0189-MP0208

U.S. Rte 7

RIGHT-OF-WAY DIVISION
TOWN FILE
PERPETUAL
Town of Colchester
(To Be Returned To R.O.W. Division)

JUL 16 1997

Pin # 78E126

PROJECT PROCESSED UNDER
SECONDARY ROAD PLAN

These plans are subject to such engineering changes as may be required by the Federal Highway Administration or the Director of Engineering and Construction. Construction is to be carried on in accordance with these plans and the Standard Specifications for Highway and Bridge Construction dated March, 1976, as approved by the Federal Highway Administration on October 27, 1976 for use on this project, including all subsequent revisions and such revised specifications and special provisions as are incorporated in these plans.

APPROVED _____
CHIEF, PROPERTY ADMINISTRATION
DATE _____

SUBMITTED BY ORDER OF THE STATE TRANSPORTATION BOARD

APPROVED *S. J. [Signature]* DATE NOV 17 1981
DIRECTOR OF ENGINEERING AND CONSTRUCTION

DEPARTMENT OF TRANSPORTATION
FEDERAL HIGHWAY ADMINISTRATION

APPROVED _____ DATE _____
DIVISION ADMINISTRATOR

PROJECT COLCHESTER RS 0285(5)
SHEET 1 OF 8

