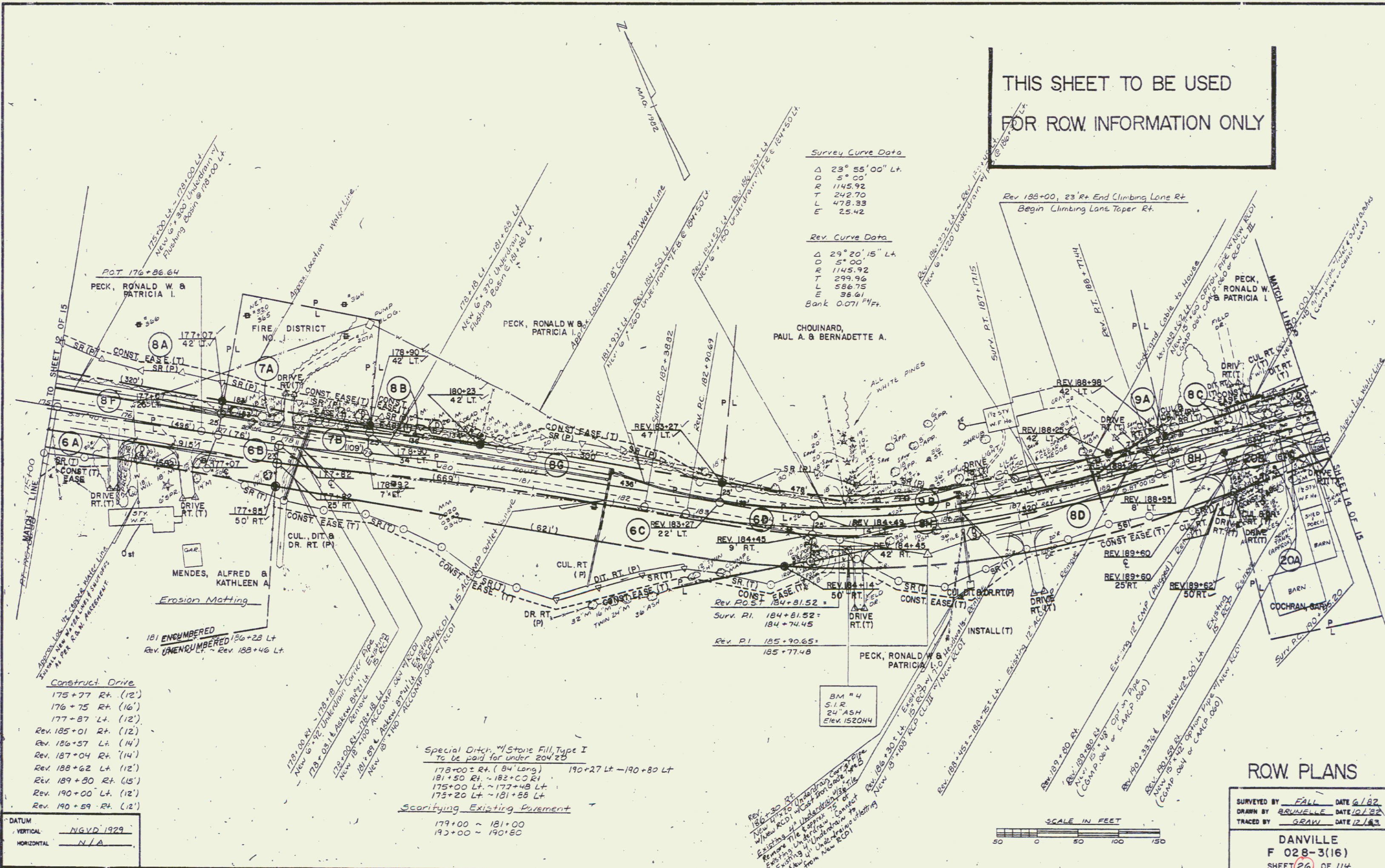


THIS SHEET TO BE USED
FOR ROW INFORMATION ONLY

Survey Curve Data
 Δ 23° 55' 00" Lt.
 D 5° 00'
 R 1145.92
 T 242.70
 L 478.33
 E 25.42

Rev Curve Data
 Δ 29° 20' 15" Lt.
 D 5° 00'
 R 1145.92
 T 299.96
 L 586.75
 E 38.41
 Bank 0.071 Ft.



- Construct Drive**
- 175+77 Rt. (12')
 - 176+75 Rt. (16')
 - 177+87 Lt. (12')
 - Rev. 185+01 Rt. (12')
 - Rev. 186+57 Lt. (14')
 - Rev. 187+04 Rt. (14')
 - Rev. 188+62 Lt. (12')
 - Rev. 189+80 Rt. (15')
 - Rev. 190+00 Lt. (12')
 - Rev. 190+59 Rt. (12')

Special Ditch w/ Stone Fill, Type I
 To be paid for under 204' 25"

- 178+00 ± Rt. (84' Long)
- 181+50 Rt. ~ 182+00 Rt
- 175+00 Lt. ~ 177+48 Lt
- 173+20 Lt ~ 181+55 Lt

Scarifying Existing Pavement

- 179+00 ~ 181+00
- 192+00 ~ 190+80

DATUM
 VERTICAL NGVD 1929
 HORIZONTAL N/A

SCALE IN FEET
 0 50 100 150

ROW PLANS

SURVEYED BY FALL DATE 6/82
 DRAWN BY REYNOLDS DATE 10/82
 TRACED BY GRAY DATE 12/83

DANVILLE
 F 028-3(16)
 SHEET 26 OF 114