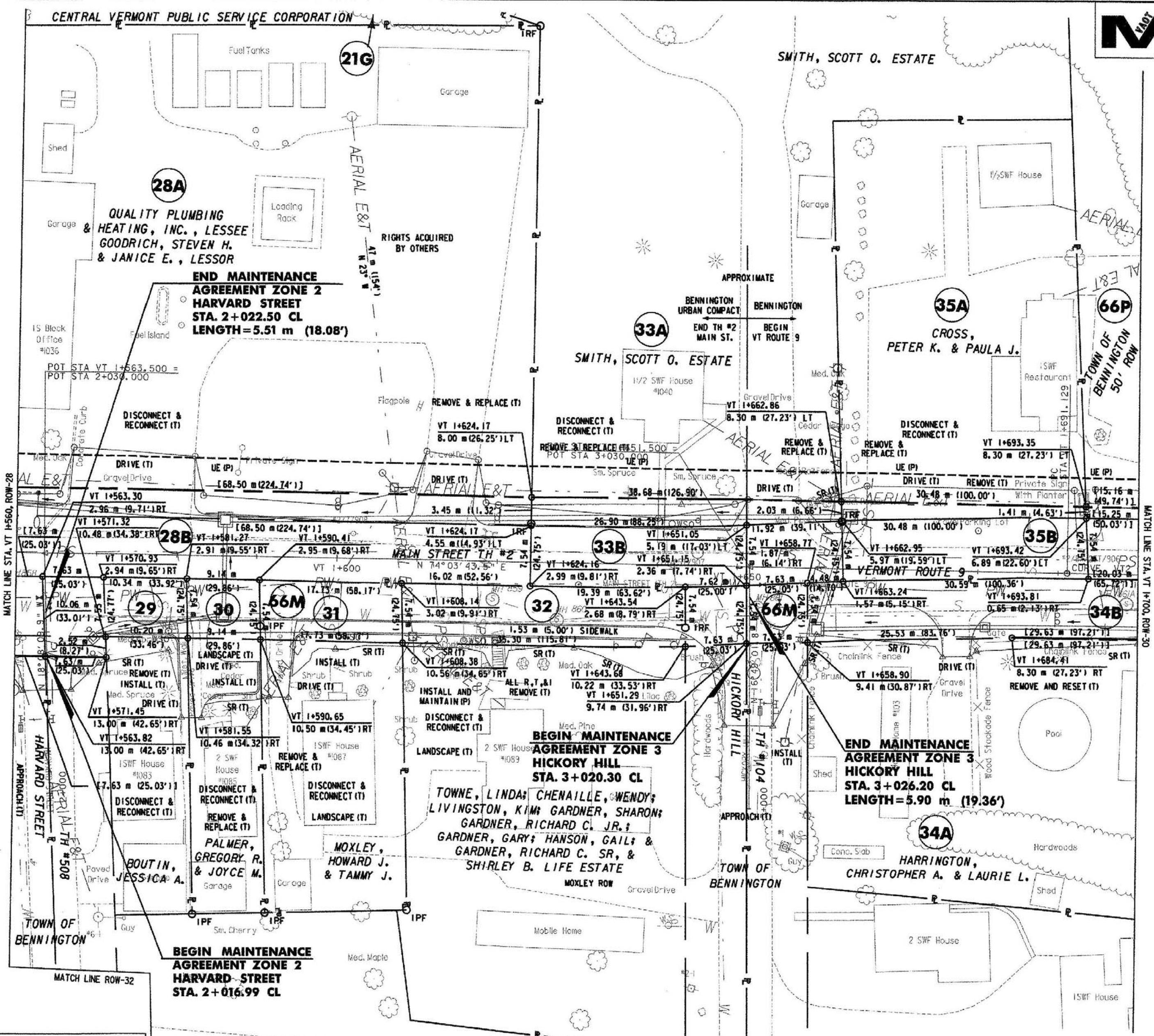


CURVE VT2	
Δ	= 2° 09' 50.7" LT.
R	= 1200.000m
T	= 22.665m
L	= 45.324m
E	= 0.214m
BANK	= 0.020
PI STA.	VT 1+713.794
N	= 42690.9310
E	= 445478.7950
PC	N = 42684.7073
E	= 445457.0014
PT	N = 42697.9732
E	= 445500.3380

CONSTRUCT DRIVE
 STA. VT 1+573.6, LT. (12.0 m GRAVEL)
 STA. VT 1+582.2, RT. (2.5 m BIT.)
 STA. VT 1+593.7, RT. (2.4 m BIT.)
 STA. VT 1+612.6, LT. (6.5 m GRAVEL)
 STA. VT 1+655.2, LT. (6.4 m GRAVEL)
 STA. VT 1+677.0, RT. (3.4 m GRAVEL)
 STA. VT 1+678.9, LT. (26.0 m GRAVEL)

CONSTRUCT APPROACH
 STA. VT 1+563.5, RT. (6.0 m BIT. HARVARD ST)
 STA. VT 1+651.5, RT. (6.0 m BIT. HICKORY HILL)



DATUM	
VERTICAL	NAVD 88
HORIZONTAL	NAD 83 (1992)

LINES SHOWN ON THIS PLAN AS EXISTING PROPERTY LINES P/L ARE BELIEVED TO BE ACCURATE BUT SHOULD NOT BE RELIED UPON FOR PURPOSES UNRELATED TO THE STATE OF VERMONT'S ACQUISITION OF LAND AND RIGHTS FOR THIS PROJECT.

THIS SHEET TO BE USED FOR RIGHT-OF-WAY INFORMATION ONLY

SCALE 1:250
 FULL SIZE

R.O.W. PLAN ROW-29	PROJECT NAME: BENNINGTON BYPASS	PROJECT NUMBER: NH FO19-(K5)
	DESIGN FILE NAME: c:\dh\bennington\row	PLOT DATE: 4-25-07
	PROJECT LEADER: JDP	DRAWN BY: MBB CHECKED BY: GAK
		SHEET: 101 OF 112