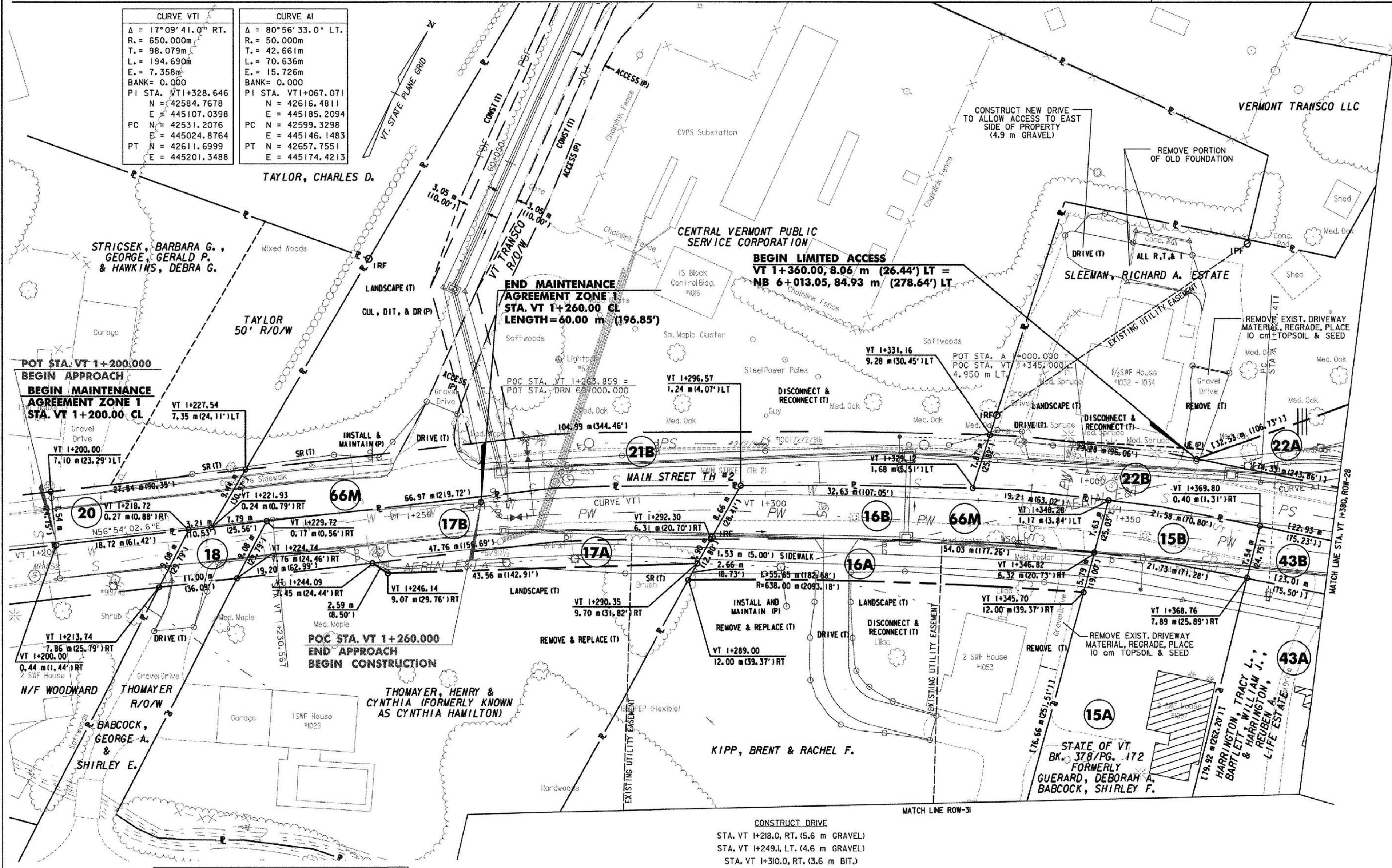


MATCH LINE ROW-6A

MATCH LINE ROW-6

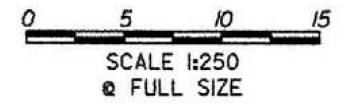
CURVE VT1	CURVE AI
Δ = 17°09' 41.0" RT.	Δ = 80°56' 33.0" LT.
R. = 650.000m	R. = 50.000m
T. = 98.079m	T. = 42.661m
L. = 194.690m	L. = 70.636m
E. = 7.358m	E. = 15.726m
BANK = 0.000	BANK = 0.000
PI STA. VT1+328.646	PI STA. VT1+067.071
N = 42584.7678	N = 42616.4811
E = 445107.0398	E = 445185.2094
PC N = 42531.2076	PC N = 42599.3298
E = 445024.8764	E = 445146.1483
PT N = 42611.6999	PT N = 42657.7551
E = 445201.3488	E = 445174.4213



LINES SHOWN ON THIS PLAN AS EXISTING PROPERTY LINES P/L ARE BELIEVED TO BE ACCURATE BUT SHOULD NOT BE RELIED UPON FOR PURPOSES UNRELATED TO THE STATE OF VERMONT'S ACQUISITION OF LAND AND RIGHTS FOR THIS PROJECT.

THIS SHEET TO BE USED FOR RIGHT-OF-WAY INFORMATION ONLY

SIGNIFIES DEMOLITION & REMOVAL OF STRUCTURES AND IMPROVEMENTS



DATUM  
VERTICAL NAVD 88  
HORIZONTAL NAD 83 (1992)

**R.O.W. PLAN  
ROW-27**

PROJECT NAME: BENNINGTON BYPASS	PROJECT NUMBER: NH FO19-1(5)
DESIGN FILE NAME: c:\dh\bennington\row	PLOT DATE: 3-26-07
PROJECT LEADER: JDP	DRAWN BY: MBB
	CHECKED BY: GAK
SHEET: 99 OF 112	