

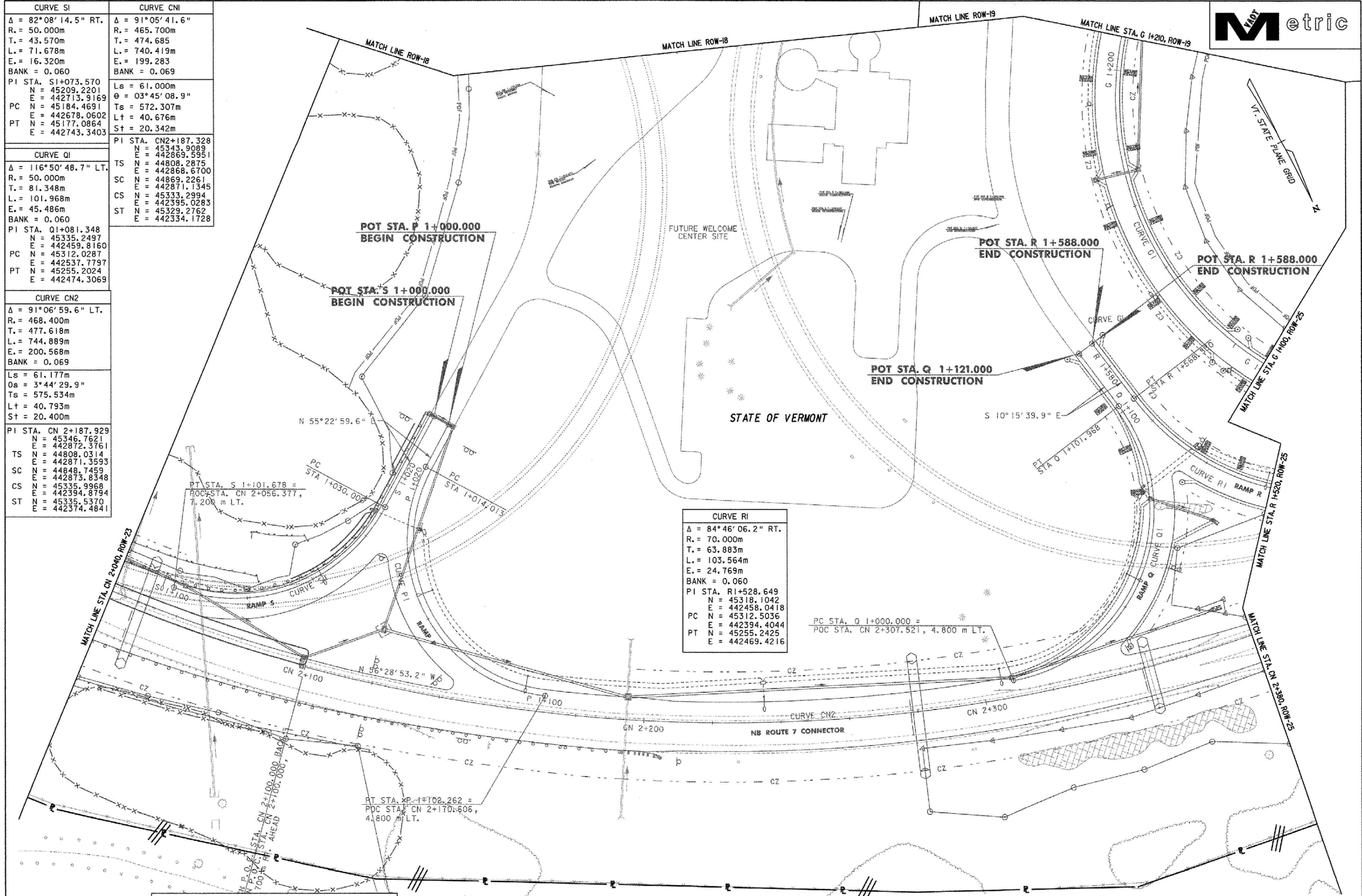


CURVE SI	CURVE CNI
$\Delta = 82^{\circ}08'14.5''$ RT.	$\Delta = 91^{\circ}05'41.6''$
R. = 50.000m	R. = 465.700m
T. = 43.570m	T. = 474.685
L. = 71.678m	L. = 740.419m
E. = 16.320m	E. = 199.283
BANK = 0.060	BANK = 0.069
PI STA. S1+073.570	Le = 61.000m
N = 45209.2201	$\theta = 03^{\circ}45'08.9''$
E = 442713.9169	Ts = 572.307m
PC N = 45184.4691	Lt = 40.676m
E = 442678.0602	St = 20.342m
PT N = 45177.0864	
E = 442743.3403	

CURVE QI
$\Delta = 116^{\circ}50'48.7''$ LT.
R. = 50.000m
T. = 81.348m
L. = 101.968m
E. = 45.486m
BANK = 0.060
PI STA. Q1+081.348
N = 45335.2497
E = 442459.8160
PC N = 45312.0287
E = 442537.7797
PT N = 45255.2024
E = 442474.3069

CURVE CN2
$\Delta = 91^{\circ}06'59.6''$ LT.
R. = 468.400m
T. = 477.618m
L. = 744.889m
E. = 200.568m
BANK = 0.069
Ls = 61.177m
Os = $3^{\circ}44'29.9''$
Ts = 575.534m
Lt = 40.793m
St = 20.400m
PI STA. CN 2+187.929
N = 45346.7621
E = 442872.3761
TS N = 44808.0314
E = 442871.3593
SC N = 44848.7469
E = 442873.8348
CS N = 45335.9968
E = 442394.8794
ST N = 45335.5370
E = 442374.4841

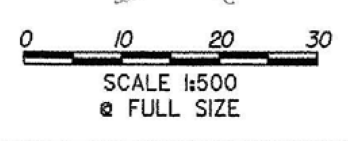
CURVE RI
$\Delta = 84^{\circ}46'06.2''$ RT.
R. = 70.000m
T. = 63.883m
L. = 103.564m
E. = 24.769m
BANK = 0.060
PI STA. R1+528.649
N = 45318.1042
E = 442458.0418
PC N = 45312.5036
E = 442394.4044
PT N = 45255.2425
E = 442469.4216



LINES SHOWN ON THIS PLAN AS EXISTING PROPERTY LINES P/L ARE BELIEVED TO BE ACCURATE BUT SHOULD NOT BE RELIED UPON FOR PURPOSES UNRELATED TO THE STATE OF VERMONT'S ACQUISITION OF LAND AND RIGHTS FOR THIS PROJECT.

THIS SHEET TO BE USED FOR RIGHT-OF-WAY INFORMATION ONLY

DATUM	
VERTICAL	NAVD 88
HORIZONTAL	NAD 83 (1992)



R.O.W. PLAN ROW-24	PROJECT NAME: BENNINGTON BYPASS	PROJECT NUMBER: NH F019-1(5)
	DESIGN FILE NAME: c:\dh\bennington\row	PLOT DATE: 12-06-05
	PROJECT LEADER: JDP	DRAWN BY: MBB CHECKED BY: GAK
		SHEET: 96 OF 112