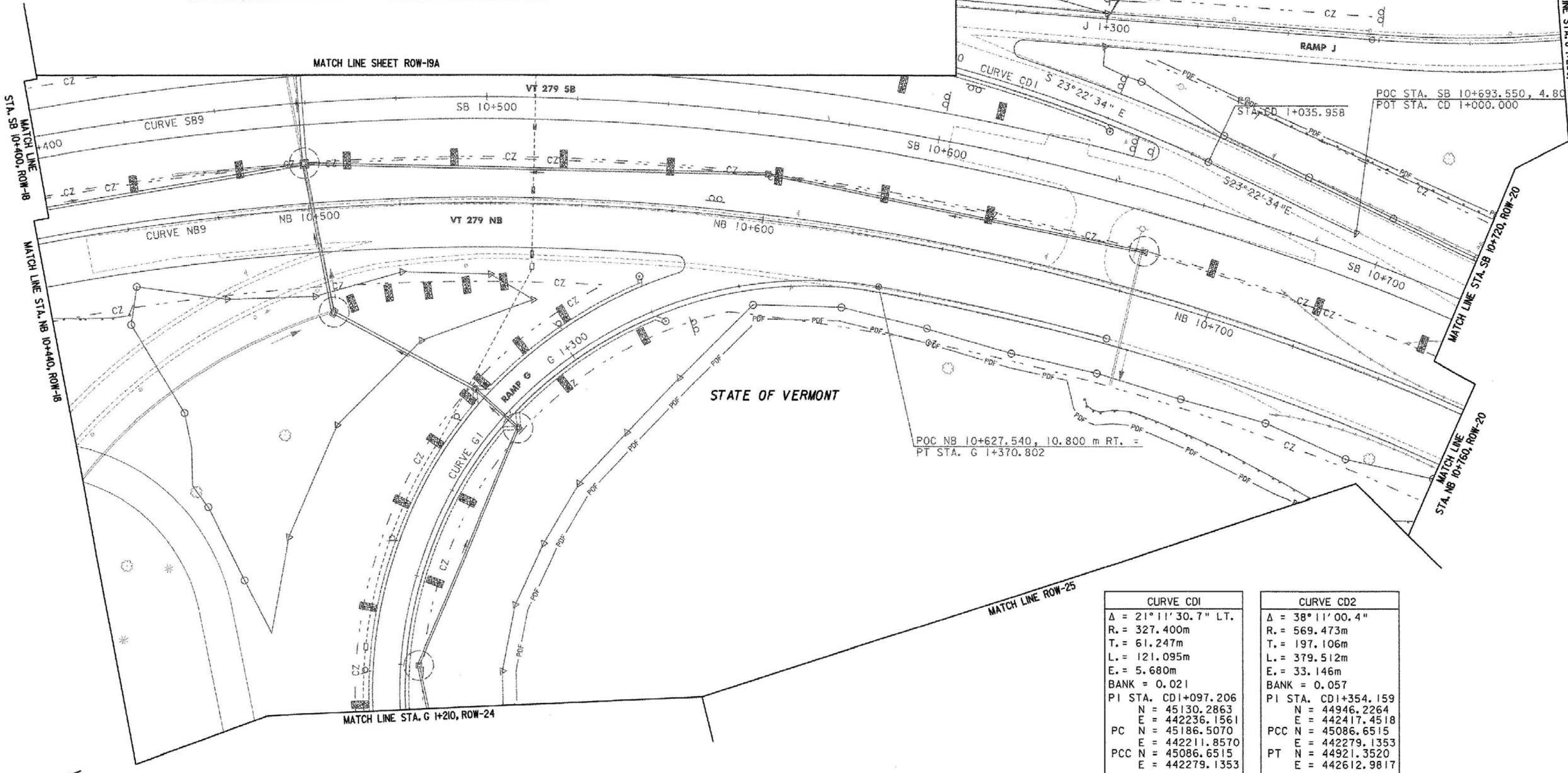
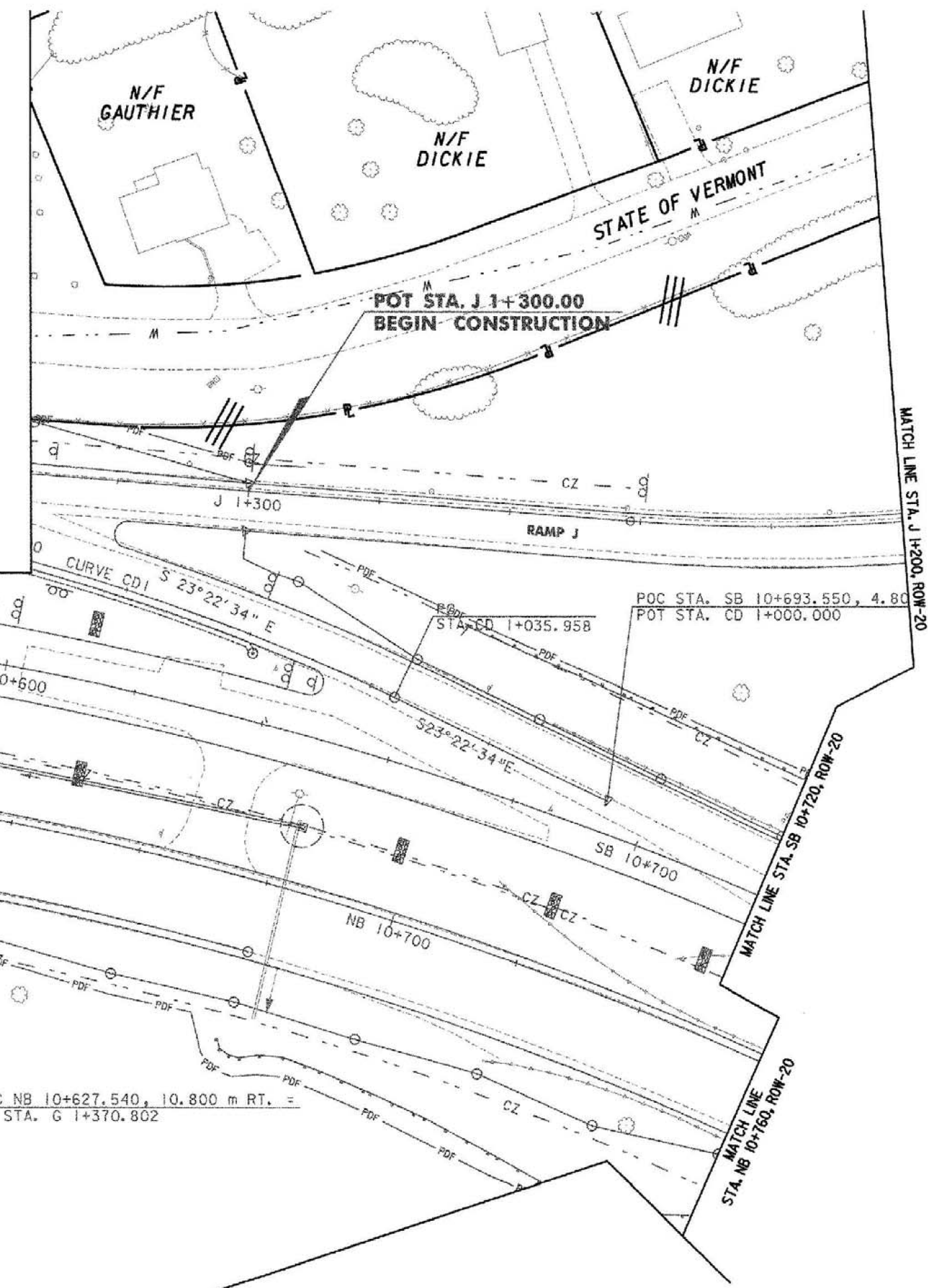


CURVE G1	
Δ	= 236°03'34.7" RT.
R.	= 90.000m
T.	= N/A
L.	= 370.802m
E.	= N/A
BANK	= 0.060
PI STA.	G1+396.514
N	= 45179.3415
E	= 442268.2761
PC	N = 45305.8601
E	= 442346.1949
PCC	N = 45159.4245
E	= 442284.5381
PT	N = 45200.7744
E	= 442254.0714

CURVE NB9	
Δ	= 76°32'26.4"
R.	= 527.595m
T.	= 416.226m
L.	= 704.807m
E.	= 144.417m
BANK	= 0.079
Ls	= 60.400m
Os	= 3°16'46.8"
Ts	= 498.050m
Lt	= 40.274m
St	= 20.140m
PI STA.	NB10+673.238
N	= 45043.6252
E	= 442179.2121
TS	N = 44958.7993
E	= 44958.7993
SC	N = 44967.5622
E	= 442588.4319
CS	N = 45459.3070
E	= 442157.9418
ST	N = 45519.6931
E	= 442157.1585

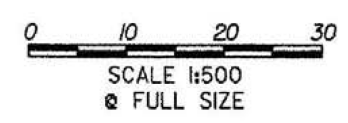
CURVE SB9	
Δ	= 76°40'45.2"
R.	= 550.702m
T.	= 435.537m
L.	= 737.007m
E.	= 151.413m
BANK	= 0.079
Ls	= 61.713m
Os	= 3°12'37.3"
Te	= 519.185m
Lt	= 41.149m
St	= 20.577m
PI STA.	SB10+640.432
N	= 45023.7967
E	= 442156.5660
TS	N = 44935.7938
E	= 442645.9195
SC	N = 44944.7226
E	= 442584.8645
CS	N = 45458.7909
E	= 442134.8315
ST	N = 45520.4904
E	= 442134.0560



LINES SHOWN ON THIS PLAN AS EXISTING PROPERTY LINES P/L ARE BELIEVED TO BE ACCURATE BUT SHOULD NOT BE RELIED UPON FOR PURPOSES UNRELATED TO THE STATE OF VERMONT'S ACQUISITION OF LAND AND RIGHTS FOR THIS PROJECT.

THIS SHEET TO BE USED FOR RIGHT-OF-WAY INFORMATION ONLY

DATUM	
VERTICAL	NAVD 88
HORIZONTAL	NAD 83 (1992)



R.O.W. PLAN
ROW-19

PROJECT NAME:	PROJECT NUMBER:
BENNINGTON BYPASS	NH F019-(15)
DESIGN FILE NAME: c:\dh\bennington\row	PLOT DATE: 12-06-05
PROJECT LEADER: JDP	DRAWN BY: MBB
	CHECKED BY: GAK
SHEET: 90 OF 112	