



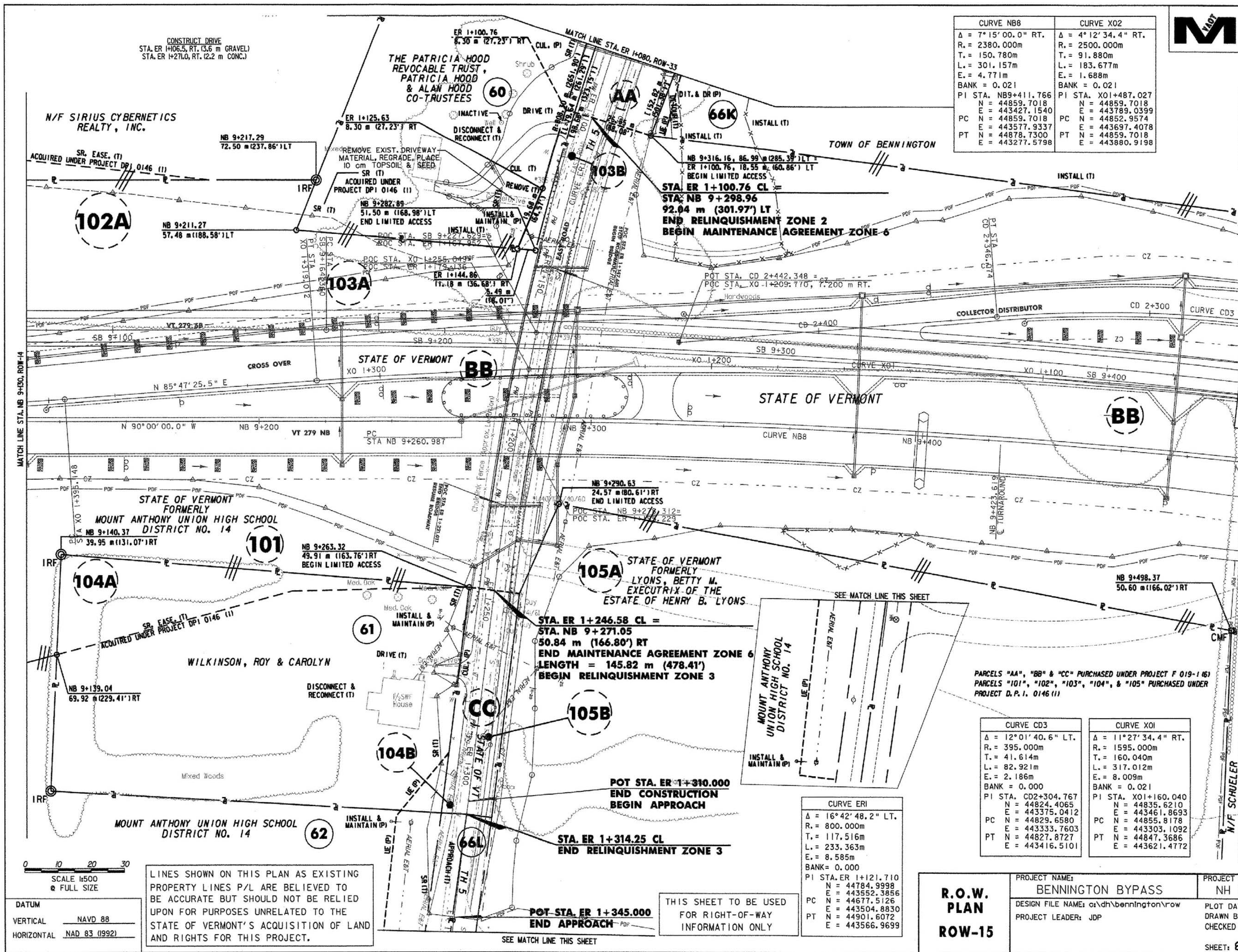
| CURVE NB8 | CURVE X02 |
|-----------------------------------|-----------------------------------|
| $\Delta = 7^{\circ}15'00.0''$ RT. | $\Delta = 4^{\circ}12'34.4''$ RT. |
| R. = 2380.000m | R. = 2500.000m |
| T. = 150.780m | T. = 91.880m |
| L. = 301.157m | L. = 183.677m |
| E. = 4.771m | E. = 1.688m |
| BANK = 0.021 | BANK = 0.021 |
| PI STA. NB9+411.766 | PI STA. X01+487.027 |
| N = 44859.7018 | N = 44859.7018 |
| E = 443427.1540 | E = 443789.0399 |
| PC N = 44859.7018 | PC N = 44852.9574 |
| E = 443577.9337 | E = 443697.4078 |
| PT N = 44878.7300 | PT N = 44859.7018 |
| E = 443277.5798 | E = 443880.9198 |

| CURVE CD3 | CURVE X01 |
|------------------------------------|------------------------------------|
| $\Delta = 12^{\circ}01'40.6''$ LT. | $\Delta = 11^{\circ}27'34.4''$ RT. |
| R. = 395.000m | R. = 1595.000m |
| T. = 41.614m | T. = 160.040m |
| L. = 82.921m | L. = 317.012m |
| E. = 2.186m | E. = 8.009m |
| BANK = 0.000 | BANK = 0.021 |
| PI STA. CD2+304.767 | PI STA. X01+160.040 |
| N = 44824.4065 | N = 44835.6210 |
| E = 443375.0412 | E = 443461.8693 |
| PC N = 44829.6580 | PC N = 44855.8178 |
| E = 443333.7603 | E = 443303.1092 |
| PT N = 44827.8727 | PT N = 44847.3686 |
| E = 443416.5101 | E = 443621.4772 |

| CURVE ERI |
|------------------------------------|
| $\Delta = 16^{\circ}42'48.2''$ LT. |
| R. = 800.000m |
| T. = 117.516m |
| L. = 233.363m |
| E. = 8.585m |
| BANK = 0.000 |
| PI STA. ER 1+121.710 |
| N = 44784.9998 |
| E = 443552.3856 |
| PC N = 44677.5126 |
| E = 443504.8830 |
| PT N = 44901.6072 |
| E = 443566.9699 |

R.O.W. PLAN
ROW-15

| | |
|---|--------------------------------|
| PROJECT NAME: BENNINGTON BYPASS | PROJECT NUMBER: NH F |
| DESIGN FILE NAME: a:\nh\bennington\row | PLOT DATE: |
| PROJECT LEADER: JDP | DRAWN BY: |
| | CHECKED BY: |
| | SHEET: 8 |



LINES SHOWN ON THIS PLAN AS EXISTING PROPERTY LINES P/L ARE BELIEVED TO BE ACCURATE BUT SHOULD NOT BE RELIED UPON FOR PURPOSES UNRELATED TO THE STATE OF VERMONT'S ACQUISITION OF LAND AND RIGHTS FOR THIS PROJECT.

THIS SHEET TO BE USED FOR RIGHT-OF-WAY INFORMATION ONLY

SCALE 1:500
FULL SIZE

DATUM
VERTICAL NAVD 88
HORIZONTAL NAD 83 (1992)

MATCH LINE STA. NB 9+00, ROW-14

MATCH LINE STA. NB 9+400, ROW-16

N/F SCHUELER