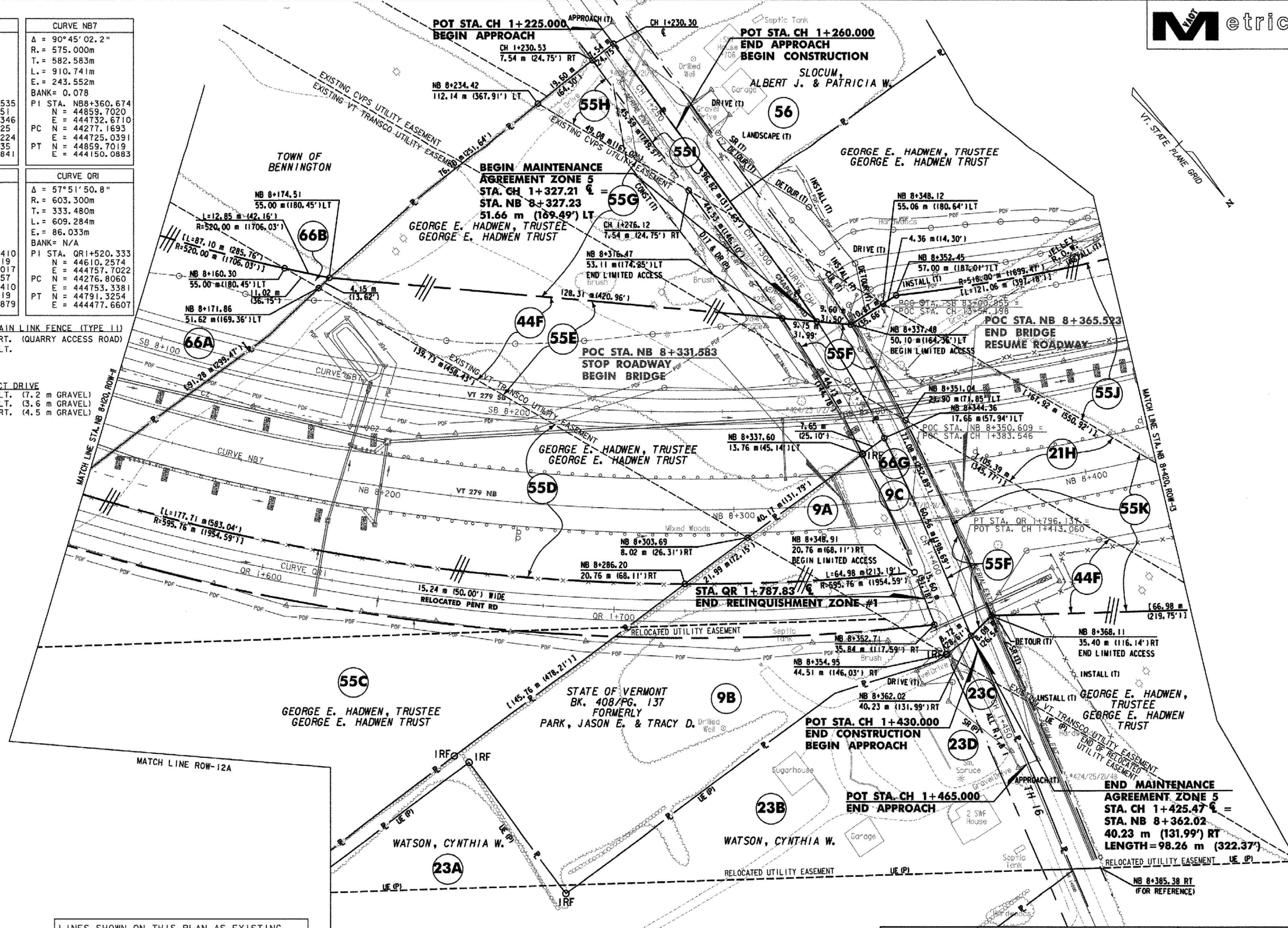


CURVE CH1	CURVE NB7
Δ = 13°20'29.3"	Δ = 90°45'02.2"
R = 315.411m	R = 575.000m
T = 36.889m	T = 582.583m
L = 73.444m	L = 910.741m
E = 2.150m	E = 243.552m
BANK = 0.044	BANK = 0.078
PI STA. CH 1+348.535	PI STA. NB8+360.674
N = 44729.2251	N = 44859.7020
E = 44458.9346	E = 444732.6710
PC N = 44692.4025	PC E = 44277.1693
PT N = 44764.5435	PT N = 44859.7019
PT E = 44469.5841	PT E = 444150.0883

CURVE SB7	CURVE QR1
Δ = 90°45'0.1"	Δ = 57°51'50.8"
R = 547.500m	R = 603.300m
T = 554.714m	T = 333.480m
L = 867.178m	L = 609.284m
E = 231.900m	E = 86.033m
BANK = N/A	BANK = N/A
PI STA. SB8+320.410	PI STA. QR1+520.333
N = 44832.2019	N = 44610.2574
E = 444704.8017	E = 444757.7022
PC N = 44277.5357	PC E = 44276.8060
PT N = 44832.2019	PT E = 444753.3381
PT E = 444150.0879	PT E = 444477.6607

DRIVE GATE FOR CHAIN LINK FENCE (TYPE I)
 STA. CH 1+412.3, RT. (QUARRY ACCESS ROAD)
 STA. CH 1+320.4, LT.

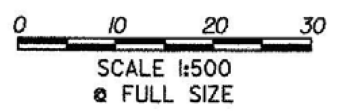
CONSTRUCT DRIVE
 STA. CH 1+261.6, LT. (7.2 m GRAVEL)
 STA. CH 1+320.4, LT. (3.6 m GRAVEL)
 STA. CH 1+430.6, RT. (4.5 m GRAVEL)



DATUM	
VERTICAL	NAVD 88
HORIZONTAL	NAD 83 (1992)

LINES SHOWN ON THIS PLAN AS EXISTING PROPERTY LINES P/L ARE BELIEVED TO BE ACCURATE BUT SHOULD NOT BE RELIED UPON FOR PURPOSES UNRELATED TO THE STATE OF VERMONT'S ACQUISITION OF LAND AND RIGHTS FOR THIS PROJECT.

THIS SHEET TO BE USED FOR RIGHT-OF-WAY INFORMATION ONLY



R.O.W. PLAN ROW-12

PROJECT NAME:	BENNINGTON BYPASS	PROJECT NUMBER:	NH FO19-1(5)
DESIGN FILE NAME:	cd\dh\bennington\row	PLOT DATE:	3-26-07
PROJECT LEADER:	JDP	DRAWN BY:	MBB
		CHECKED BY:	GAK
		SHEET: 82 OF 112	