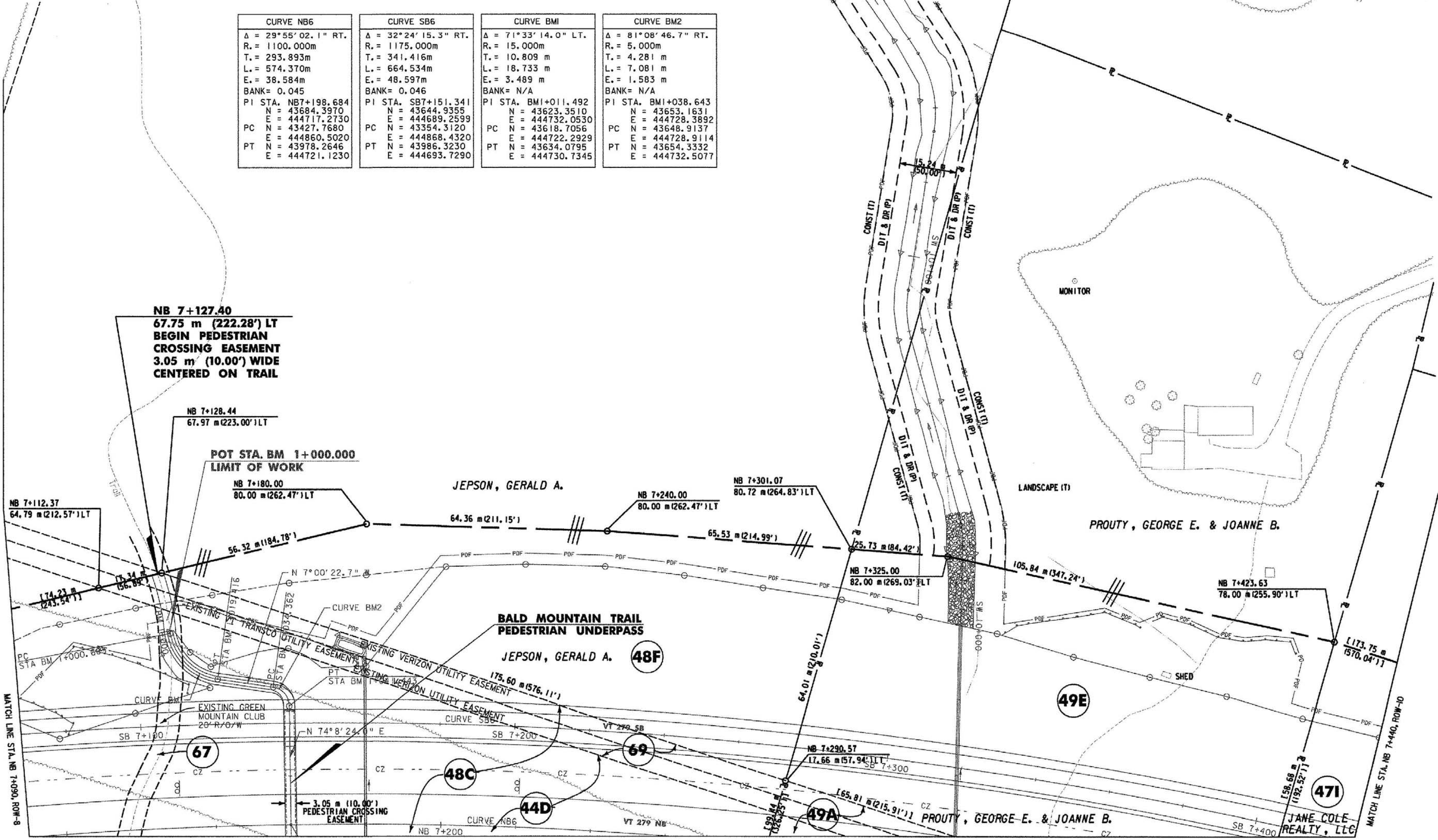


CURVE Bmr-3	CURVE Bmr-4
Δ = 89°43'41.6" RT.	Δ = 18°36'7.5" LT.
R. = 4.000m	R. = 30.000m
T. = 3.981m	T. = 4.913m
L. = 6.264m	L. = 9.740m
E. = 1.643m	E. = 0.400m
BANK= N/A	BANK= N/A
PI STA. Bmr+090.662	PI STA. Bmr+130.763

CURVE NB6	CURVE SB6	CURVE BMI	CURVE BM2
Δ = 29°55'02.1" RT.	Δ = 32°24'15.3" RT.	Δ = 71°33'14.0" LT.	Δ = 81°08'46.7" RT.
R. = 1100.000m	R. = 1175.000m	R. = 15.000m	R. = 5.000m
T. = 293.893m	T. = 341.416m	T. = 10.809 m	T. = 4.281 m
L. = 574.370m	L. = 664.534m	L. = 18.733 m	L. = 7.081 m
E. = 38.584m	E. = 48.597m	E. = 3.489 m	E. = 1.583 m
BANK= 0.045	BANK= 0.046	BANK= N/A	BANK= N/A
PI STA. NB7+198.684	PI STA. SB7+151.341	PI STA. BMI+011.492	PI STA. BM1+038.643
N = 43684.3970	N = 43644.9355	N = 43623.3510	N = 43653.1631
E = 44417.2730	E = 444689.2599	E = 444732.0530	E = 444728.3892
PC N = 43427.7680	PC N = 43354.3120	PC N = 43618.7056	PC N = 43648.9137
E = 444860.5020	E = 444868.4320	E = 444722.2929	E = 444728.9114
PT N = 43978.2646	PT N = 43986.3230	PT N = 43634.0795	PT N = 43654.3332
E = 444721.1230	E = 444693.7290	E = 444730.7345	E = 444732.5077



**NB 7+127.40**  
**67.75 m (222.28') LT**  
**BEGIN PEDESTRIAN**  
**CROSSING EASEMENT**  
**3.05 m (10.00') WIDE**  
**CENTERED ON TRAIL**

**NB 7+128.44**  
**67.97 m (223.00') LT**

**POT STA. BM 1+000.000**  
**LIMIT OF WORK**

**NB 7+180.00**  
**80.00 m (262.47') LT**

**JEPSON, GERALD A.**

**NB 7+240.00**  
**80.00 m (262.47') LT**

**NB 7+301.07**  
**80.72 m (264.83') LT**

**LANDSCAPE (T)**

**PROUTY, GEORGE E. & JOANNE B.**

**NB 7+423.63**  
**78.00 m (255.90') LT**

**BALD MOUNTAIN TRAIL**  
**PEDESTRIAN UNDERPASS**

**JEPSON, GERALD A. 48F**

**49E**

**67**

**48C**

**44D**

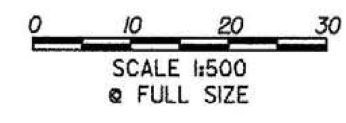
**49A**

**47I**

**DATUM**  
 VERTICAL NAVD 88  
 HORIZONTAL NAD 83 (1992)

LINES SHOWN ON THIS PLAN AS EXISTING PROPERTY LINES P/L ARE BELIEVED TO BE ACCURATE BUT SHOULD NOT BE RELIED UPON FOR PURPOSES UNRELATED TO THE STATE OF VERMONT'S ACQUISITION OF LAND AND RIGHTS FOR THIS PROJECT.

THIS SHEET TO BE USED FOR RIGHT-OF-WAY INFORMATION ONLY



**R.O.W. PLAN**  
**ROW-9**

PROJECT NAME: **BENNINGTON BYPASS**  
 DESIGN FILE NAME: c:\adh\bennington\row  
 PROJECT LEADER: JDP

PROJECT NUMBER: **NH F019-(K5)**  
 PLOT DATE: 3-26-07  
 DRAWN BY: MBB  
 CHECKED BY: GAK

SHEET: **76** OF **112**