

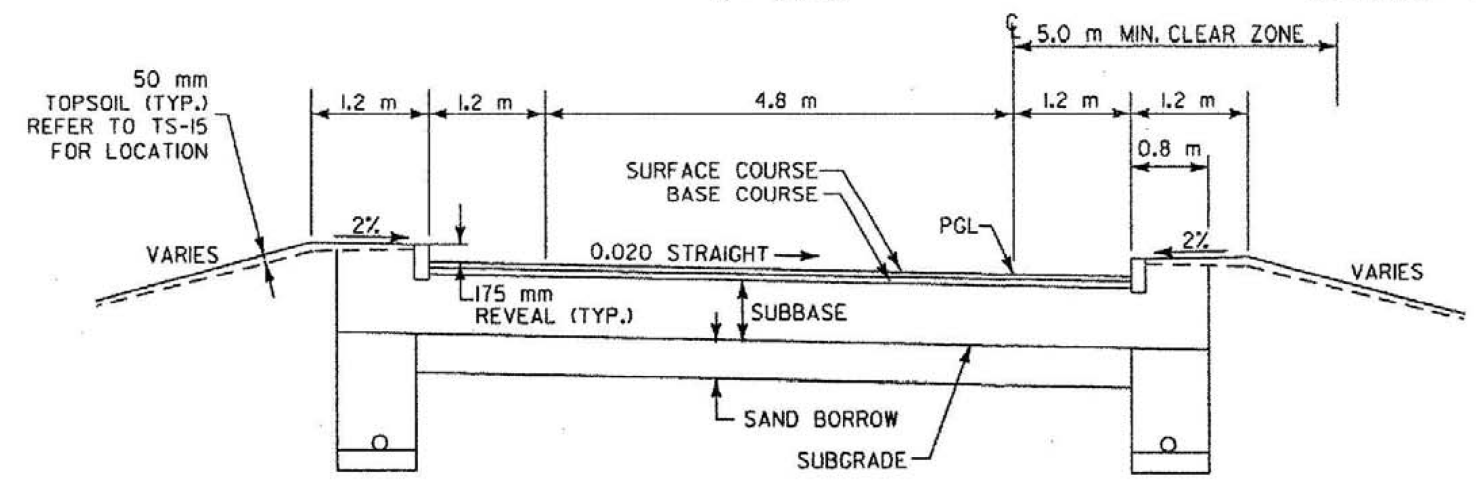


## TYPICAL SECTION RT 9 INTERCHANGE - RAMPS A&D

MATERIAL ITEM	THICKNESS TOLERANCE
PAVEMENT COURSES (TOTAL DEPTH)	
BASE COURSES (TOTAL DEPTH)	+/- 5 mm
SUBBASE	+/- 15 mm
SAND BORROW	+/- 30 mm

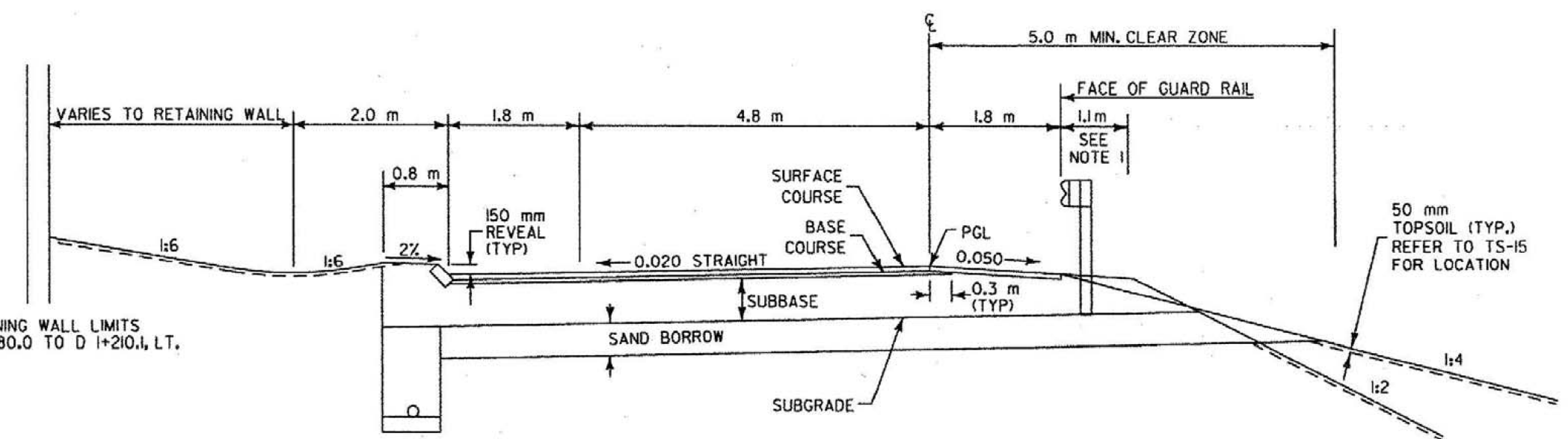
- 130 mm SUPERPAVE BITUMINOUS CONCRETE PAVEMENT (50 mm TYPE IIS, 80 mm TYPE IIS)
- 100 mm BASE COURSE, SUPERPAVE BITUMINOUS CONCRETE PAVEMENT, TYPE IS
- 600 mm SUBBASE OF DENSE GRADED CRUSHED STONE
- 400 mm SAND BORROW
- SHOULDERS: 130 mm BITUMINOUS CONCRETE PAVEMENT (50 mm TYPE IIS, 80 mm TYPE IIS)

- NOTES:**
- ELIMINATE TOPSOIL AND SEEDING BEHIND GUARD RAIL TO SUBGRADE CATCH POINT.
  - FOR SLOPES IN SOLID ROCK EXCAVATION AND DRILLING AND BLASTING OF SOLID ROCK SUBGRADE, SEE STD. SHEET A-60M AND A-62M AND DETAILS
  - REFER TO TYPICAL SECTION SHEET, TS-15 FOR SEEDING FORMULA AND ADDITIONAL GENERAL NOTES.

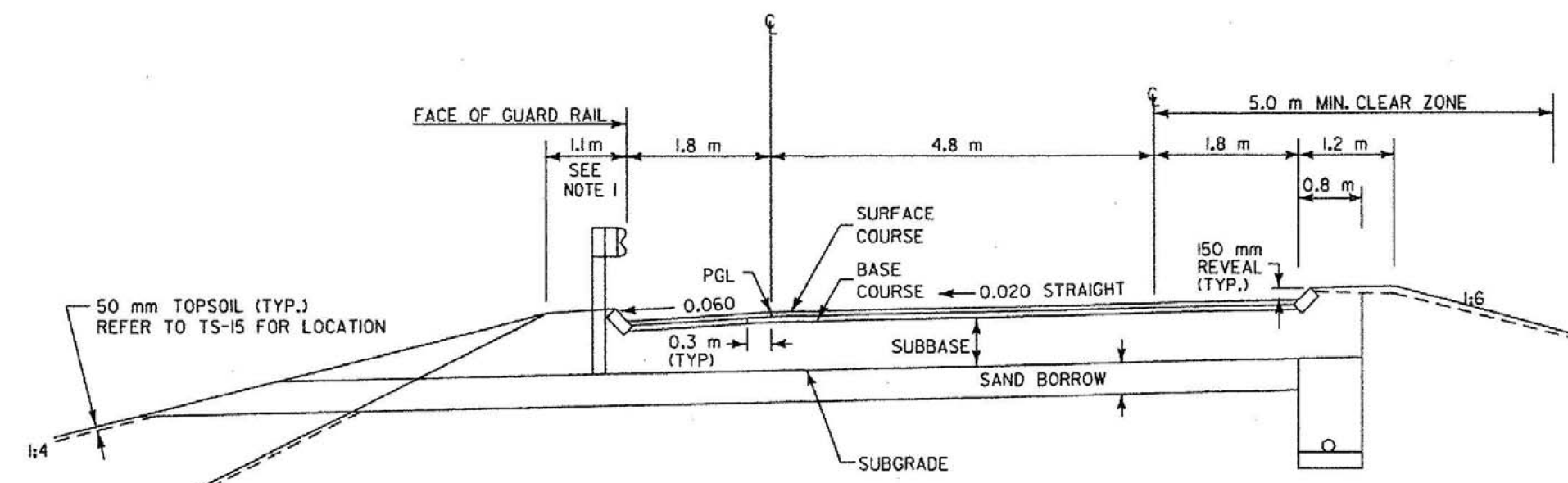


**VERTICAL CURB SECTION**  
**STA. A 1+048 - STA. A 1+077**  
**STA. D 1+045 - STA. D 1+080**  
**STA. AS 1+000 - STA. AS 1+029**  
**STA. DS 1+000 - STA. AS 1+036**

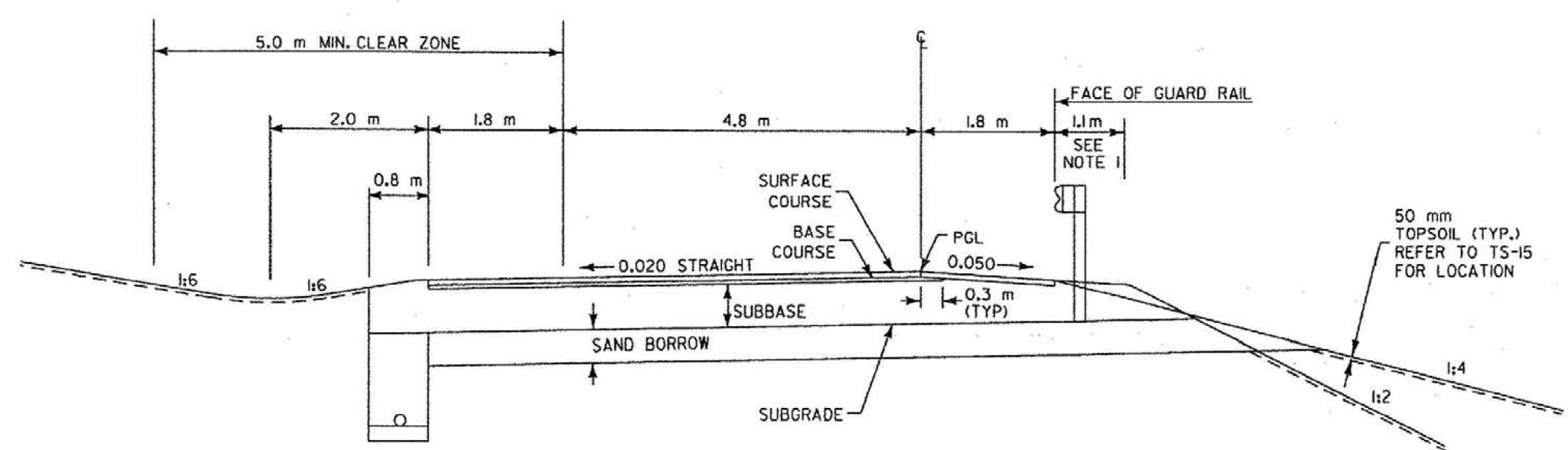
**NOTE:**  
 1) DESIGN FROST DEPTH - 1230 mm



**NORMAL SECTION**  
**STA. D 1+080 - STA. D 1+235**  
 GRANITE SLOPE EDGING MATCHES TO BRIDGE CURB ON SHEET P-6 AT STATION D 1+226.0



**NORMAL SECTION**  
**STA. A 1+077 - STA. A 1+241**  
 GRANITE SLOPE EDGING MATCHES TO BRIDGE CURB ON SHEET P-6 AT STATION A 1+234.0



**NORMAL SECTION NO CURB**  
**STA. A 1+389 - STA. A 1+600**  
**STA. D 1+381 - STA. D 1+591**

VERMONT AGENCY OF TRANSPORTATION

<b>DH</b> Dufresne-Henry	PROJECT NAME: BENNINGTON	<b>REVISED</b>
	PROJECT NUMBER: NH FO19-1(5)	
	FILE NAME: ...Highway\PlotFiles\typicals.ppt	PLOT DATE: 11/20/2004
	DESIGN SUPERVISOR: GREG EDWARDS	DRAWN BY: DUFRESNE-HENRY
DESIGNED BY: MARC FOISY	CHECKED BY: GARY SANTY	
TYPICAL TS-05		SHEET 7 OF 112

PCL=PROFILE GRADE LINE

K:\AS15020 - Bennington Highway\PlotFiles\typicals.ppt