

SEE SHEET TWO

R.O.W. PLANS

STATE OF VERMONT AGENCY OF TRANSPORTATION



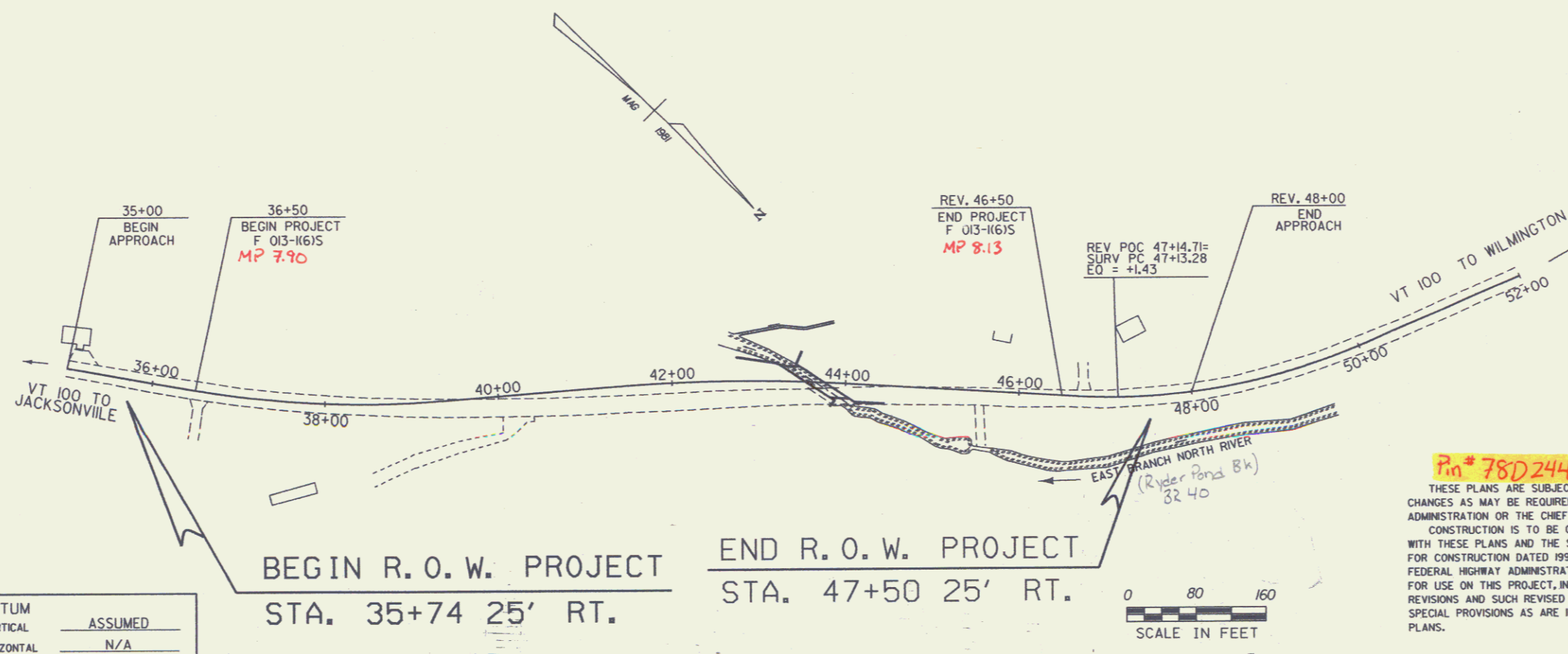
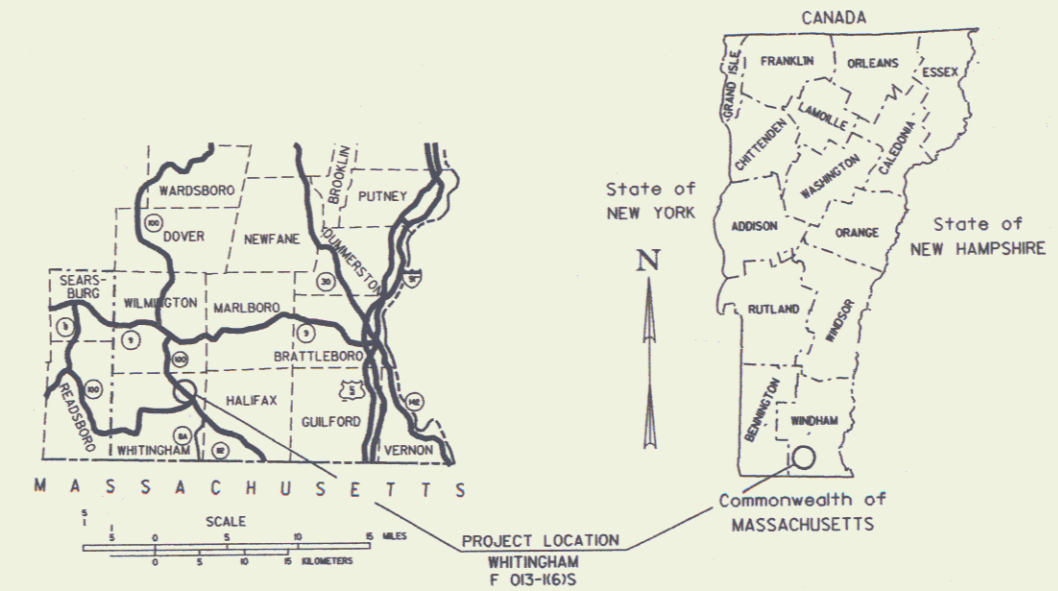
PROPOSED IMPROVEMENT COUNTY OF WINDHAM TOWN OF WHITINGHAM VT ROUTE 100 MINOR ARTERIAL

IN THE TOWN OF WHITINGHAM, BEGINNING AT A POINT APPROXIMATELY 0.25 MILES NORTHWESTERLY OF THE JUNCTION OF VERMONT ROUTE 100 AND VERMONT ROUTE 112 AND CONTINUING NORTHWESTERLY FOR APPROXIMATELY 0.189 MILES ON VERMONT ROUTE 100.

WORK TO BE PERFORMED UNDER THIS PROJECT IS TO REPLACE THE EXISTING BRIDGE, GRADING, DRAINAGE, SUBBASE AND BITUMINOUS CONCRETE PAVEMENT.

LENGTH OF PROJECT 1000 FEET 0.189 MILES

LENGTH OF ROW PROJECT 1176 FEET 0.223 MILES

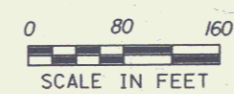


| CONVENTIONAL SIGNS | |
|--------------------|-----------|
| COUNTY LINE | --- |
| TOWN LINE | - - - - |
| LIMITS OF ACCESS | ○ |
| POINT OF ACCESS | X |
| FENCE LINE | — X — X — |
| STONE WALL | — X — X — |
| TRAVELED WAY | — X — X — |
| GUARD RAIL | — X — X — |
| RAILROAD | — X — X — |
| SURVEY LINE | — X — X — |
| CULVERT | — X — X — |
| POWER POLE | — X — X — |
| TELEPHONE POLE | — X — X — |
| TREES | — X — X — |
| CONTROL OF ACCESS | — X — X — |
| PROPERTY LINE | — X — X — |
| R.O.W. TAKING LINE | — X — X — |
| SLOPE RIGHTS | — X — X — |
| TOP OF CUT | — X — X — |
| TOE OF SLOPE | — X — X — |

| | |
|------------|---------|
| DATUM | ASSUMED |
| VERTICAL | ASSUMED |
| HORIZONTAL | N/A |

BEGIN R. O. W. PROJECT
STA. 35+74 25' RT.

END R. O. W. PROJECT
STA. 47+50 25' RT.



PER AS BUILDS :

Construction was extended to station 48+10 for cold planning. 2/7/91 Kdp

PIN # 78D244

THESE PLANS ARE SUBJECT TO SUCH ENGINEERING CHANGES AS MAY BE REQUIRED BY THE FEDERAL HIGHWAY ADMINISTRATION OR THE CHIEF ENGINEER. CONSTRUCTION IS TO BE CARRIED ON IN ACCORDANCE WITH THESE PLANS AND THE STANDARD SPECIFICATIONS FOR CONSTRUCTION DATED 1990, AS APPROVED BY THE FEDERAL HIGHWAY ADMINISTRATION ON MARCH 15, 1990 FOR USE ON THIS PROJECT, INCLUDING ALL SUBSEQUENT REVISIONS AND SUCH REVISED SPECIFICATIONS AND SPECIAL PROVISIONS AS ARE INCORPORATED IN THESE PLANS.

APPROVED *Stephen S. MacArthur* 2/1/95
Director of Engineering

APPROVED *Wm. P. B...* DATE 2/1/95
Chief of Right of Way

WHITINGHAM
F 013-1(6)S
R.O.W. SHEET (1) OF 9 SHEETS

DD244TIT

TABLE OF PROJECT PROPERTY ACQUISITION

STATE OF VERMONT
AGENCY OF TRANSPORTATION
RIGHT OF WAY PLANS
DETAIL SHEET

| PARCEL NO. | GRANTOR | SHEET NO. | BEGINNING STATION | ENDING STATION | TAKING | REM. | RIGHTS | TITLE TAKEN | DATE | TOWN OR CITY RECORDED | BK. | PG. | REMARKS | REVISION NO. | SHEET | DESCRIPTION OF REVISION | DATE | MADE BY | APPROVED BY | |
|------------|---|-----------|--|--|--------|------|---|-------------|----------|-----------------------|-----|-----|--|--------------|---------|--|----------|----------|-------------|--|
| 5A | STATE OF VERMONT FORMERLY DUMOND, FREDERICK L. | 6 | REV. 43+83 RT. REV. 43+83 RT. | REV. 44+38 RT. REV. 44+45 RT. | 0.01A± | | CHANNEL (P) 0.01A± | WD | 08-29-95 | WHITINGHAM | 96 | 263 | 82 S.F.± 368 S.F.± | 10 | 3, 5, 6 | PARCEL NO. 1 MOODY, CHANGE IN TITLE FROM PETER T. AND MARIANNE SHOFFSTALL TO EDNA S. MOODY. PER C.O. 8790. | 02-15-96 | P. J. H. | L. W. B. | |
| 5B | | 6 | REV. 41+87 RT. REV. 42+07 RT. REV. 42+65 RT. | REV. 44+29 RT. REV. 42+34 RT. REV. 43+54 RT. | 0.12A± | | ALL R.T. & I. SLOPE (P) 0.01A± SLOPE (P) 0.02A± | | | | | | HWY. EASE. VT. RTE. 100 125 S.F.± 860 S.F.± | | | | | | | |
| 6A | STATE OF VERMONT FORMERLY OSTOVARI, CAMBIS & MARY ANN | 6, 7 | REV. 44+29 RT. REV. 44+75 RT. REV. 44+90 RT. REV. 45+55 RT. | REV. 47+50 RT. REV. 45+06 RT. REV. 45+85 RT. | 0.07A± | | CHANNEL (P) 0.01A± SLOPE (T) 0.01A± DRIVE (T) | WD | | WHITINGHAM | | | 2847 S.F.± 140 S.F.± 550 S.F.± 10' GRAVEL MP 0806 | | | | | | | |
| 6B | | 6, 7 | REV. 43+89 RT. | 47+50 CL | 0.20A± | | ALL R.T. & I. | | | | | | HWY. EASE. VT. RTE. 100 | | | | | | | |
| 7 | VILLAGE OF JACKSONVILLE ELECTRIC CO. | | | | | | | | | | | | UTILITY | | | | | | | |
| 8 | NYNEX | | | | | | | | | | | | UTILITY | | | | | | | |

0131006 1805 780244 JDP

ACCT.prop
/p/prop/780244/r/d244.dgn
DATE PLOTTED 14-FEB-96
r/d244d2.i

DR. (P)- DRAINAGE RIGHT
DIT. (P)- DITCHING RIGHT
CH. (P)- CHANNEL RT.
DRIVE (T)- DRIVE RIGHT
CUL. (P)- CULVERT RIGHT
[W]- WATER SOURCES

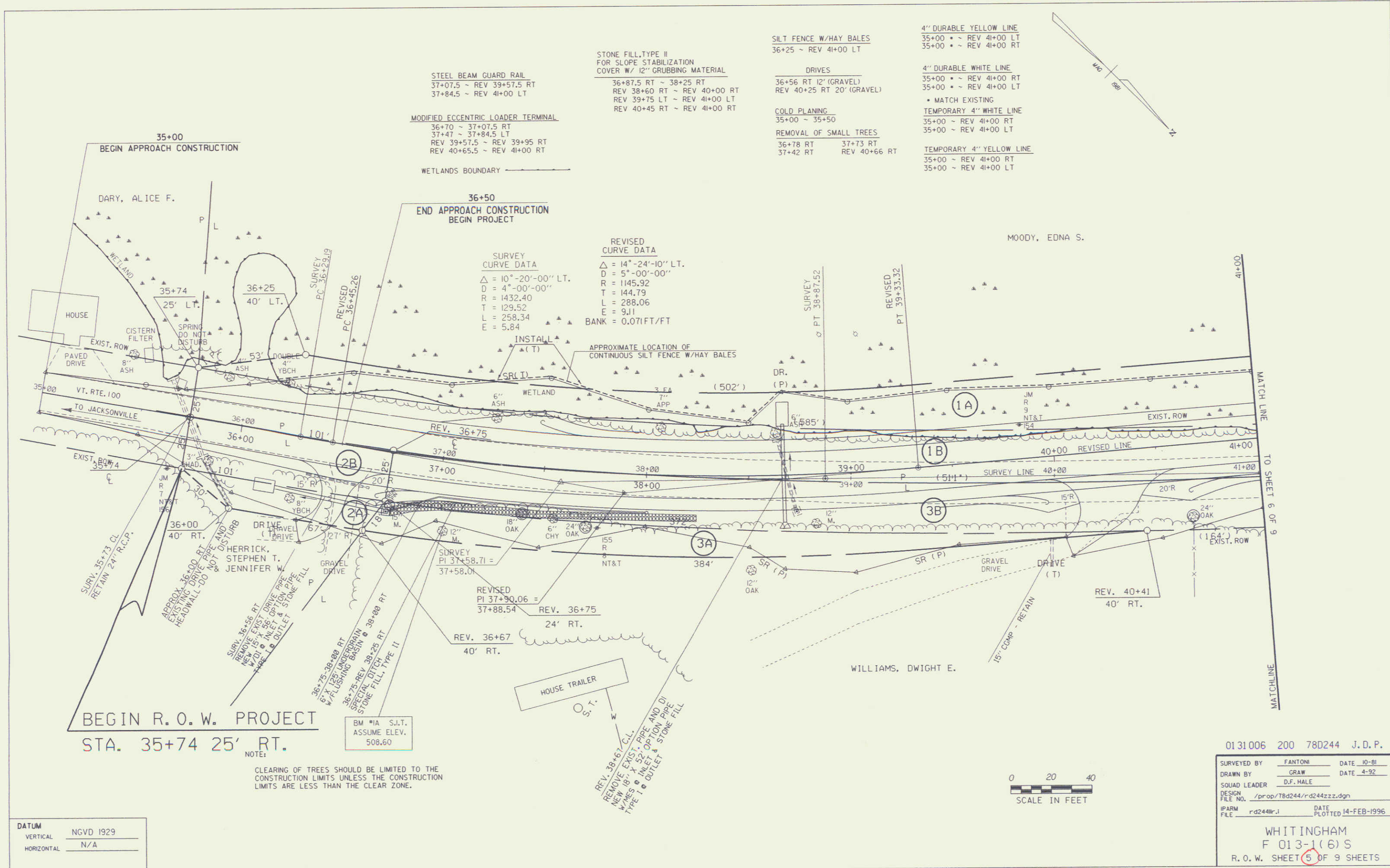
PRESENT R.O.W.
TAKING WITHOUT ACCESS
TAKING WITHOUT ACCESS ALONG PROPERTY LINE
TAKING WITH ACCESS
PERMANENT EASEMENT
TEMPORARY EASEMENT

LEGEND
--- CZ (P) --- CLEAR ZONE
--- CONST. (T) --- CONSTRUCTION EASEMENT
SR SR SLOPE RIGHTS
P PROPERTY LINE
TOP OF CUT
TOE OF SLOPE

REVISED 02-15-96

APPROVED: LAWRENCE W. BLISS DATE: 01-25-95
AGENT D. PLANS & TITLES

R. O. W. PLANS
WHITINGHAM
F 013-1(6) S
SHEET 4 OF 9



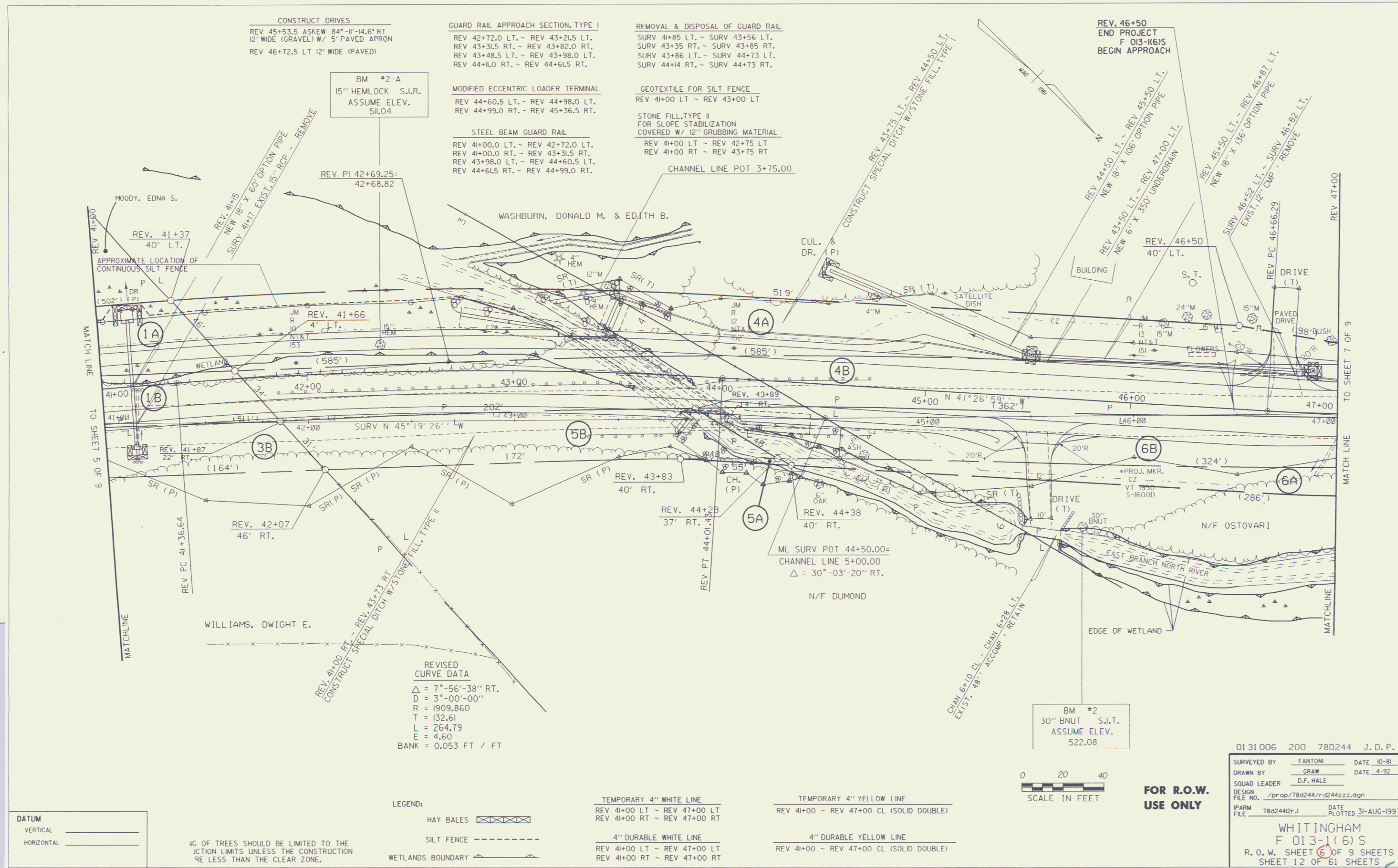
| | |
|------------|-----------|
| DATUM | |
| VERTICAL | NGVD 1929 |
| HORIZONTAL | N/A |

NOTE:
CLEARING OF TREES SHOULD BE LIMITED TO THE CONSTRUCTION LIMITS UNLESS THE CONSTRUCTION LIMITS ARE LESS THAN THE CLEAR ZONE.

| | | | |
|------------------------------|---------------------------|--------------|-------------|
| 01 31 006 | 200 | 780244 | J. D. P. |
| SURVEYED BY | FANTONI | DATE | 10-91 |
| DRAWN BY | GRAY | DATE | 4-92 |
| SQUAD LEADER | D.F. HALE | | |
| DESIGN FILE NO. | /prop/780244/rd244zzz.dgn | | |
| IPARM FILE | rd244r.j | DATE PLOTTED | 14-FEB-1996 |
| WHITINGHAM | | | |
| F 013-1(6) S | | | |
| R. O. W. SHEET 5 OF 9 SHEETS | | | |

DEC 08 1999

4



CONSTRUCT DRIVES
 REV 45+53.5 ASKEW 84°-11'-14.6" RT
 12" WIDE (GRAVEL) W/ 5' PAVED APRON
 REV 46+72.5 LT 12" WIDE (PAVED)

GUARD RAIL APPROACH SECTION, TYPE I
 REV 42+72.0 LT. ~ REV 43+21.5 LT.
 REV 43+31.5 RT. ~ REV 43+82.0 RT.
 REV 43+48.5 LT. ~ REV 43+98.0 LT.
 REV 44+11.0 RT. ~ REV 44+61.5 RT.

REMOVAL & DISPOSAL OF GUARD RAIL
 SURV 41+85 LT. ~ SURV 43+56 LT.
 SURV 43+35 RT. ~ SURV 43+85 RT.
 SURV 43+86 LT. ~ SURV 44+73 LT.
 SURV 44+14 RT. ~ SURV 44+73 RT.

BM #2-A
 15" HEMLOCK S.I.R.
 ASSUME ELEV.
 511.04

MODIFIED ECCENTRIC LOADER TERMINAL
 REV 44+60.5 LT. ~ REV 44+98.0 LT.
 REV 44+99.0 RT. ~ REV 45+36.5 RT.

GEOTEXTILE FOR SILT FENCE
 REV 41+00 LT ~ REV 43+00 LT

STEEL BEAM GUARD RAIL
 REV 41+00.0 LT. ~ REV 42+72.0 LT.
 REV 41+00.0 RT. ~ REV 43+31.5 RT.
 REV 43+98.0 LT. ~ REV 44+60.5 LT.
 REV 44+61.5 RT. ~ REV 44+99.0 RT.

STONE FILL, TYPE II FOR SLOPE STABILIZATION COVERED W/ 12" GRUBBING MATERIAL
 REV 41+00 LT ~ REV 42+75 LT
 REV 41+00 RT ~ REV 43+75 RT

CHANNEL LINE POT 3+75.00

REV. 46+50
 END PROJECT
 F 013-1(6)S
 BEGIN APPROACH

DATUM
 VERTICAL _____
 HORIZONTAL _____

LOC OF TREES SHOULD BE LIMITED TO THE JCTN LIMITS UNLESS THE CONSTRUCTION IS LESS THAN THE CLEAR ZONE.

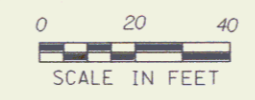
LEGEND:
 HAY BALES [Symbol]
 SILT FENCE [Symbol]
 WETLANDS BOUNDARY [Symbol]

TEMPORARY 4" WHITE LINE
 REV 41+00 LT ~ REV 47+00 LT
 REV 41+00 RT ~ REV 47+00 RT

4" DURABLE WHITE LINE
 REV 41+00 LT ~ REV 47+00 LT
 REV 41+00 RT ~ REV 47+00 RT

TEMPORARY 4" YELLOW LINE
 REV 41+00 ~ REV 47+00 CL (SOLID DOUBLE)

4" DURABLE YELLOW LINE
 REV 41+00 ~ REV 47+00 CL (SOLID DOUBLE)



FOR R.O.W. USE ONLY

0131006 200 78D244 J. D. P.
 SURVEYED BY FANTONI DATE 10-81
 DRAWN BY GRAW DATE 4-92
 SQ. LEADER D.F. HALE
 DESIGN FILE NO. /prop/78d244/r-d244zzz.dgn
 IPARM FILE 78d244zr.j DATE PLOTTED 31-AUG-1997

WHITINGHAM
 F 013-1(6)S
 R. O. W. SHEET 6 OF 9 SHEETS
 SHEET 12 OF 61 SHEETS

TEMPORARY 4" YELLOW LINE
 47+00 ~ 48+50 RT
 47+00 ~ 48+50 LT

TEMPORARY 4" WHITE LINE
 47+00 ~ 48+50 RT
 47+00 ~ 48+50 LT

4" DURABLE YELLOW LINE
 47+00 ~ 48+50 LT •
 47+00 ~ 48+50 RT •

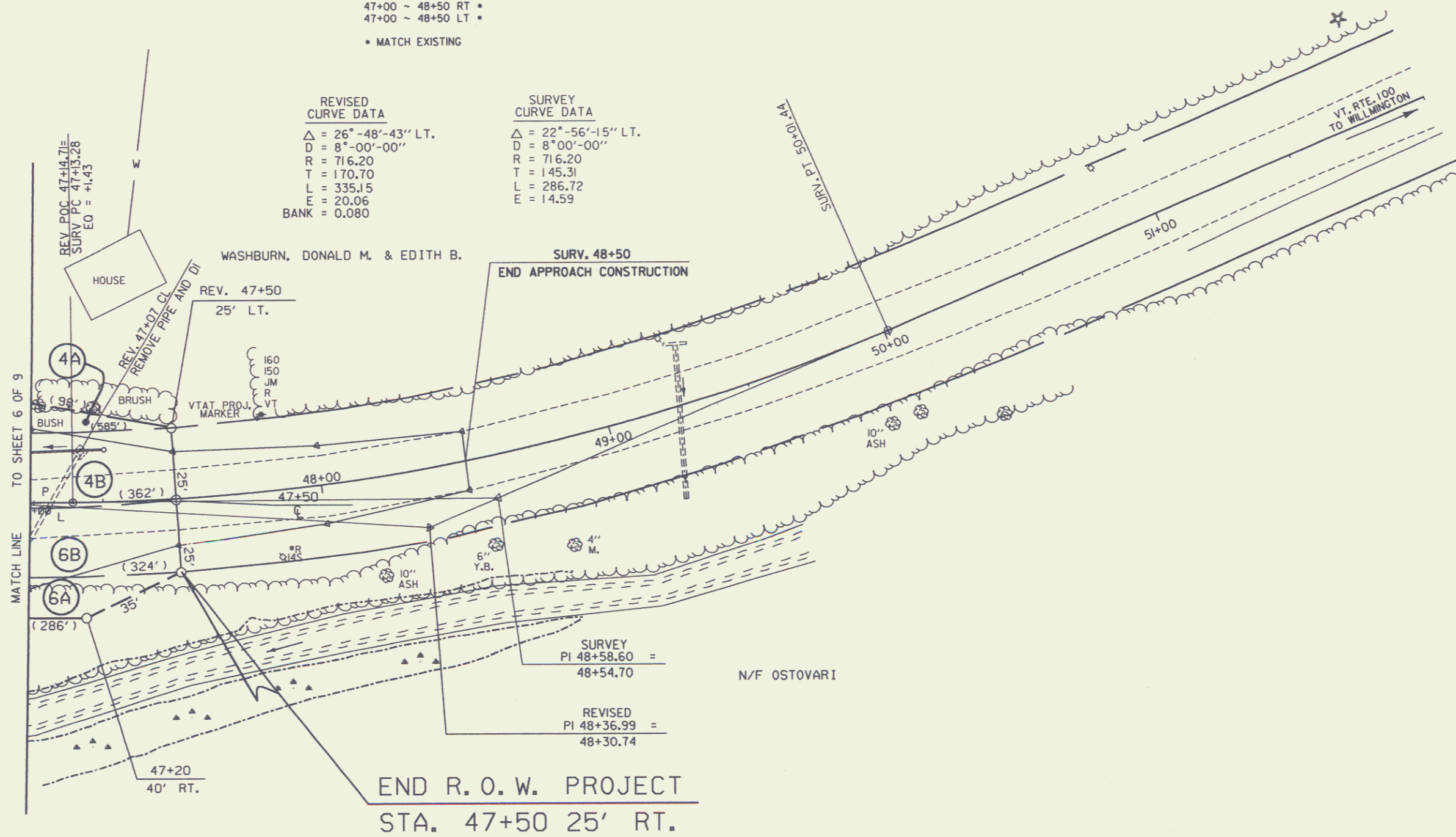
COLD PLANING
 48+00 ~ 48+50

4" DURABLE WHITE LINE
 47+00 ~ 48+50 RT •
 47+00 ~ 48+50 LT •

• MATCH EXISTING

REVISED CURVE DATA
 $\Delta = 26^\circ - 48' - 43''$ LT.
 $D = 8^\circ - 00' - 00''$
 $R = 716.20$
 $T = 170.70$
 $L = 335.15$
 $E = 20.06$
 $BANK = 0.080$

SURVEY CURVE DATA
 $\Delta = 22^\circ - 56' - 15''$ LT.
 $D = 8^\circ - 00' - 00''$
 $R = 716.20$
 $T = 145.31$
 $L = 286.72$
 $E = 14.59$



NOTE
 CLEARING OF TREES SHOULD BE LIMITED TO THE CONSTRUCTION LIMITS UNLESS THE CONSTRUCTION LIMITS ARE LESS THAN THE CLEAR ZONE.

DATUM
 VERTICAL _____
 HORIZONTAL _____

0 20 40
 SCALE IN FEET

0131006 200 780244 J. D. P.

SURVEYED BY FANTONI DATE 10-81
 DRAWN BY GRAW DATE 4-92
 SQUAD LEADER D.F. HALE
 DESIGN FILE NO. /prop/780244/r-d244zz.dgn
 PARM FILE 7802443r.1 DATE PLOTTED 23-AUG-1995

WHITINGHAM
 F 013-1(6)S
 R. O. W. SHEET 7 OF 9 SHEETS