

Steel Beam Guard Rail (w/Steel Posts)
 Rev 203+75 ~ 205+75 Rt. (200')
 Rev 203+75 ~ 205+75 Lt. (200')
 Total = 400'

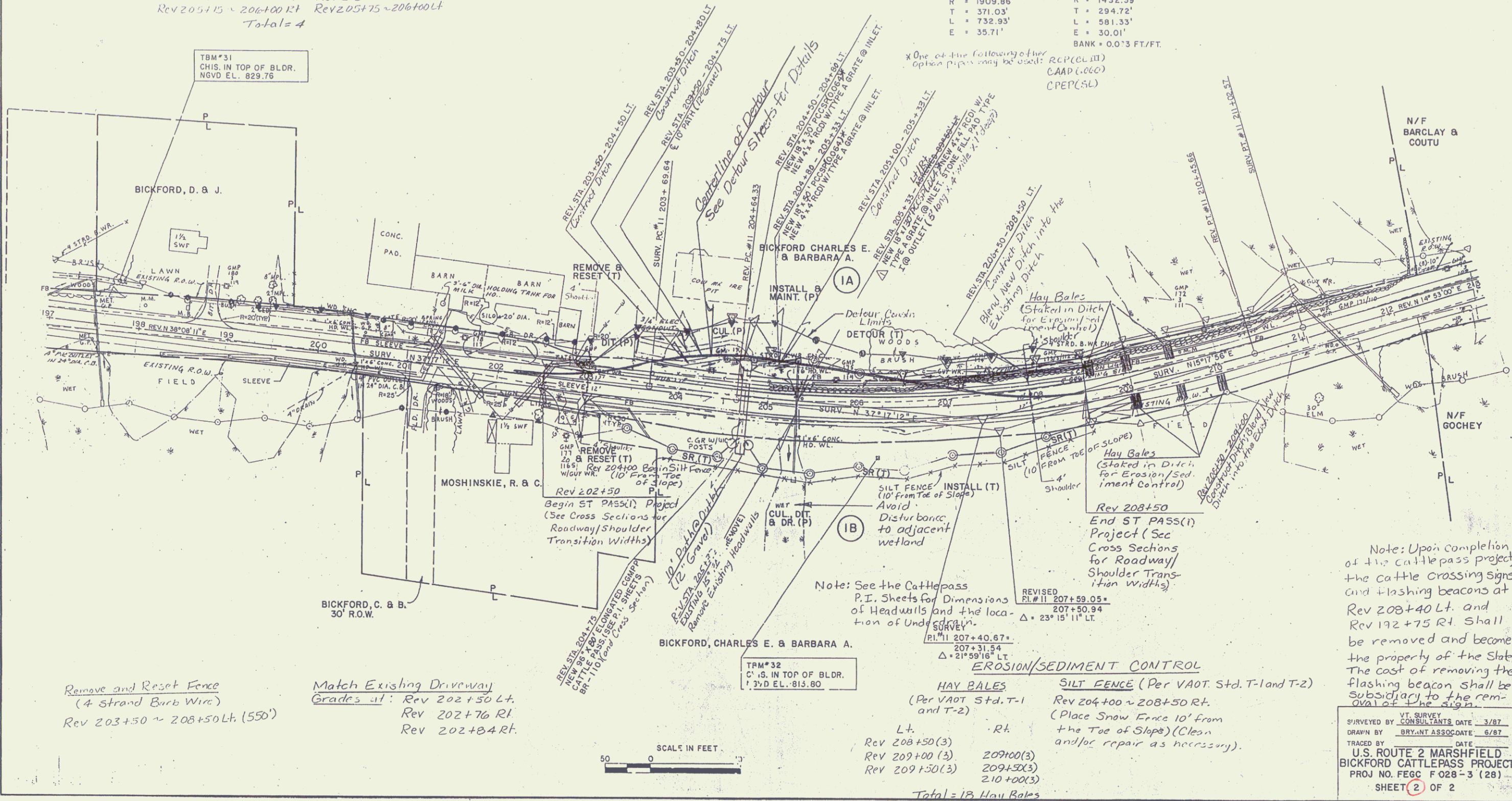
REMOVAL & DISPOSAL OF GUARD RAIL
 REV. STA. 204+00 - 205+69 RT (170')

CON. NO.	STATE	FED. AID PROJ. NO.	FISCAL YEAR	SHEET NO.	TOTAL SHEETS
1	VT		19		

Modified Eccentric Load Terminal (MELT)
 Rev 203+50 ~ 203+75 Rt. Rev 203+50 ~ 203+75 Lt.
 Rev 205+15 ~ 206+00 Lt. Rev 205+75 ~ 206+00 Lt.
 Total = 4

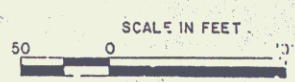
SURVEY CURVE DATA #11
 $\Delta = 21^{\circ}59'16''$ LT.
 $D = 3^{\circ}00'00''$
 $R = 1909.86'$
 $T = 371.03'$
 $L = 732.93'$
 $E = 35.71'$

REVCURVE DATA #11
 $\Delta = 23^{\circ}15'11''$ LT.
 $D = 4^{\circ}00'00''$
 $R = 1432.33'$
 $T = 294.72'$
 $L = 581.33'$
 $E = 30.01'$
 BANK = 0.0'3 FT./FT.



Remove and Reset Fence
 (4 Strand Barb Wire)
 Rev 203+50 ~ 208+50 Lt. (550')

Match Existing Driveway
 Grades at: Rev 202+50 Lt.
 Rev 202+76 Rt.
 Rev 202+84 Rt.



Note: See the Cattlepass
 P.I. Sheets for Dimensions
 of Headwalls and the loca-
 tion of Underdrains.

EROSION/SEDIMENT CONTROL

HAY BALES (Per VAOT Std. T-1 and T-2)	SILT FENCE (Per VAOT Std. T-1 and T-2) Rev 204+00 ~ 208+50 Rt. (Place Snow Fence 10' from the Toe of Slope) (Clean and/or repair as necessary).
Lt. Rev 208+50 (3) Rev 209+00 (3) Rev 209+50 (3)	Rt. 209+00 (3) 209+50 (3) 210+00 (3)
Total = 18 Hay Bales	

Note: Upon completion of the cattlepass project the cattle crossing signs and flashing beacons at Rev 208+40 Lt. and Rev 192+75 Rt. shall be removed and become the property of the State. The cost of removing the flashing beacon shall be subsidiary to the removal of the sign.

VT SURVEY
 SURVEYED BY: CONSULTANTS DATE: 3/87
 DRAWN BY: BRYANT ASSOCIATE DATE: 6/87
 TRACED BY: DATE:
 U.S. ROUTE 2 MARSHFIELD
 BICKFORD CATTLEPASS PROJECT
 PROJ. NO. FECC F 028-3 (28)
 SHEET 2 OF 2