

| PROJ. NO. | STATE | FED. AID PROJ. NO. | FISCAL YEAR | SHEET NO. | TOTAL SHEETS |
|-----------|-------|--------------------|-------------|-----------|--------------|
| 1         | VT.   | FO10-1(17)         | 19          | 9         | 18           |

EXCAVATION & REMOVAL OF ROAD SURFACE & PAVEMENTS  
44+50 LT. - 46+00 LT.

DRILLING & BLASTING OF SOLID ROCK SUBGRADE  
33+50 - 34+50  
36+75 - 37+75

GUARD RAIL STD. STL. BEAM W/ WOOD POSTS, TYPE II  
40+85 - 42+60 LT.

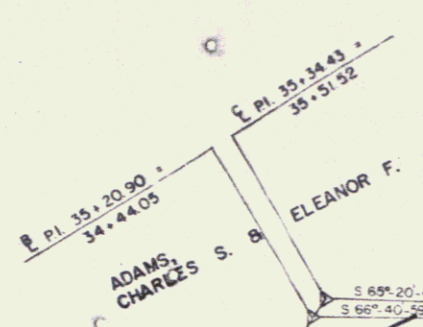
CONSTRUCT DRIVE  
LT.  
43+25  
44+15  
44+65  
45+20

TEMP. 4" REFLECT WHITE LINES  
33+00 - 46+00, 23' RT.  
33+00 - 46+00, 12' RT. (DASHED)  
33+00 - 36+00, 12' LT.  
36+00, 12' LT. - 41+50, 23' LT.  
41+50 - 46+00, 23' LT.  
41+50 - 46+00, 12' LT. (DASHED)

REMOVAL & RESETTING GUARD RAIL  
33+00 LT. - 40+85 LT.

SCARIFYING EXIST. PAVEMENT  
40+00 - 43+50 RT.

TEMP. 4" REFLECT YELLOW LINES  
33+00 - 46+00 E (DOUBLE)

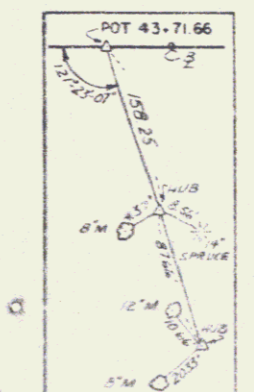
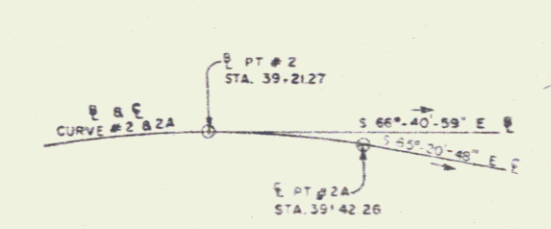


**Curve Data #2**

|      |               |
|------|---------------|
| Δ    | = 59°-52'-06" |
| D    | = 6°-21'-58"  |
| R    | = 900.00'     |
| T    | = 477.21'     |
| L    | = 877.58'     |
| E    | = 118.69'     |
| BANK | = 0.078 FT/FT |

**Curve Data #2A**

|      |               |
|------|---------------|
| Δ    | = 57°-12'-17" |
| D    | = 6°-21'-58"  |
| R    | = 900.00'     |
| T    | = 490.74'     |
| L    | = 898.57'     |
| E    | = 125.10'     |
| BANK | = 0.078 FT/FT |



NOTE: ALL STATIONS FROM 39+40 TO 55+65 ARE REVISED.

JUN 05 1986

SURVEYED BY BRYANT ASSOC. DATE 1/84  
 DRAWN BY BRYANT ASSOC. DATE 3/86  
 TRACED BY K.A.W. DATE 9/98  
**RTE. 9 - MARLBORO**  
 PROJ. NO. 1010 (17)  
 SHEET 9 OF 18