

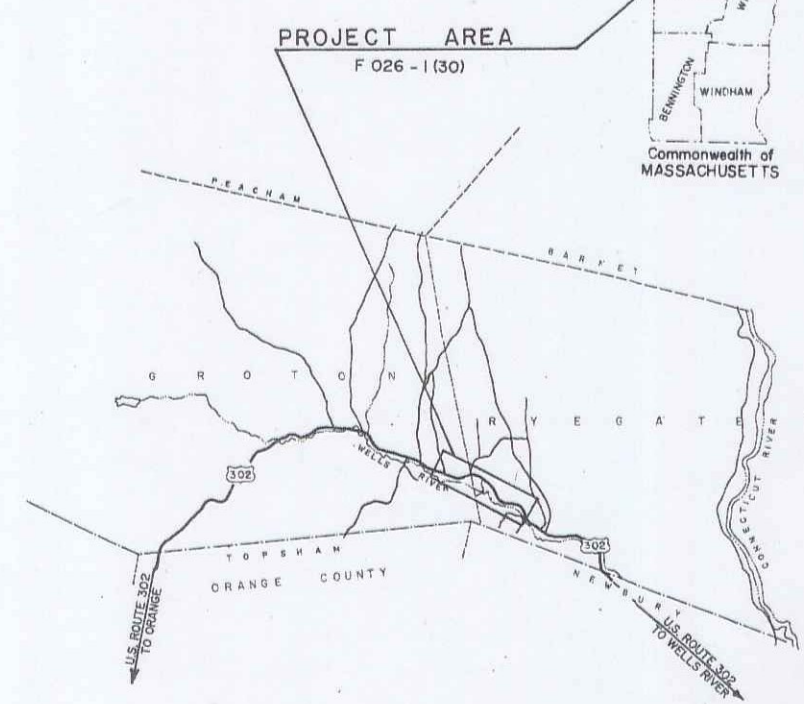
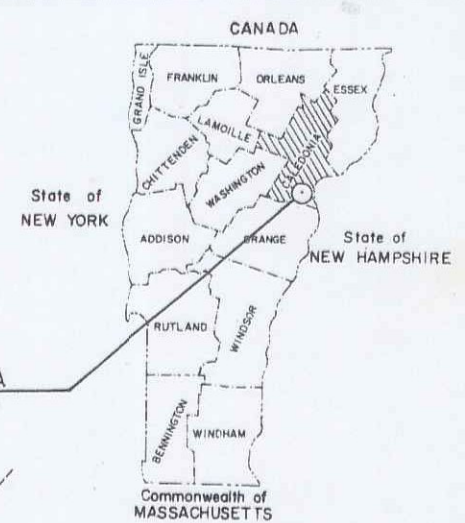
Batched 10/19/99 Manned 11-08-01

STATE OF VERMONT AGENCY OF TRANSPORTATION



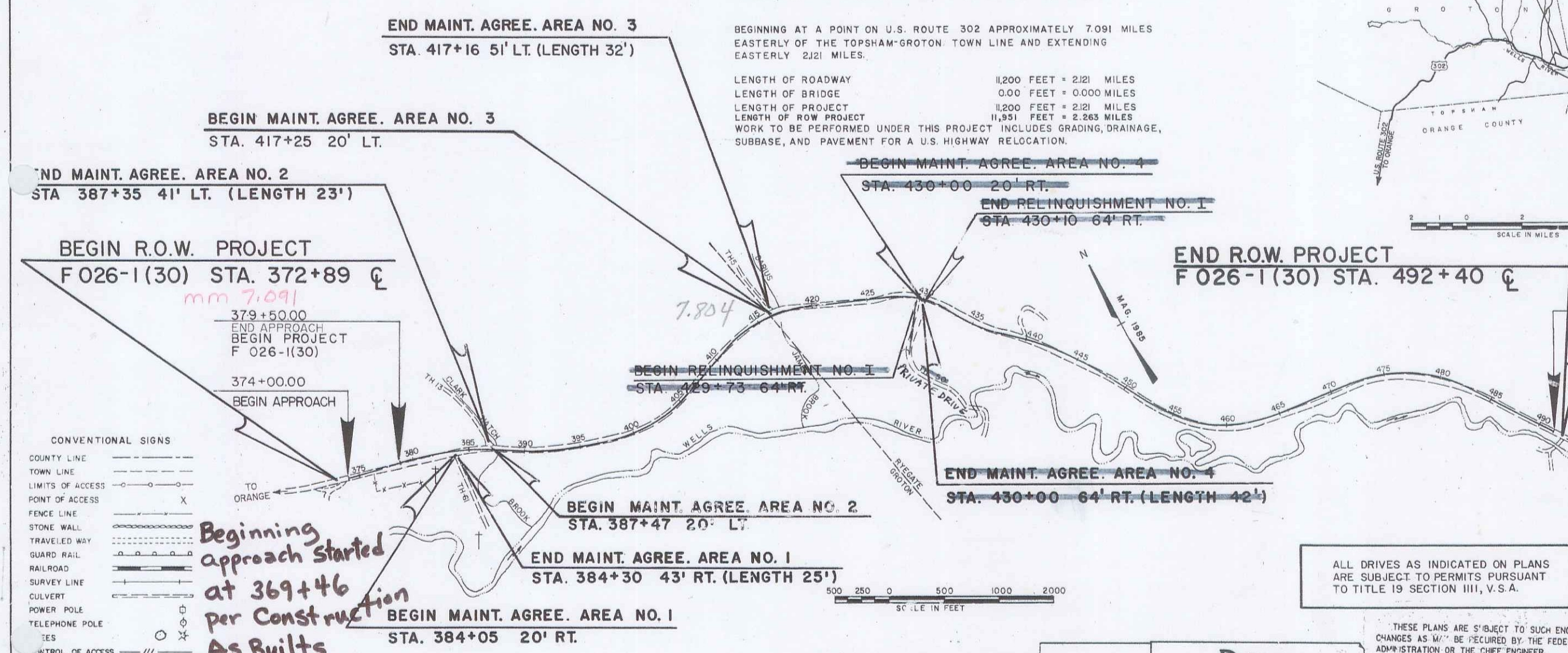
R.O.W. PLANS

PROPOSED IMPROVEMENT TOWNS OF GROTON AND RYEGATE COUNTY OF CALEDONIA U.S. ROUTE 302 (FAP)



BEGINNING AT A POINT ON U.S. ROUTE 302 APPROXIMATELY 7.091 MILES
EASTERLY OF THE TOPSHAM-GROTON TOWN LINE AND EXTENDING
EASTERLY 2.261 MILES.

LENGTH OF ROADWAY 11,200 FEET = 2.121 MILES
LENGTH OF BRIDGE 0.00 FEET = 0.000 MILES
LENGTH OF PROJECT 11,200 FEET = 2.121 MILES
LENGTH OF ROW PROJECT 11,951 FEET = 2.263 MILES
WORK TO BE PERFORMED UNDER THIS PROJECT INCLUDES GRADING, DRAINAGE,
SUBBASE, AND PAVEMENT FOR A U.S. HIGHWAY RELOCATION.



CONVENTIONAL SIGNS

COUNTY LINE	---
TOWN LINE	- - - -
LIMITS OF ACCESS	○
POINT OF ACCESS	○ X
FENCE LINE	— X —
STONE WALL	— X —
TRAVELED WAY	— X —
GUARD RAIL	— X —
RAILROAD	— X —
SURVEY LINE	— X —
CULVERT	— X —
POWER POLE	— X —
TELEPHONE POLE	— X —
TIES	— X —
CONTROL OF ACCESS	— X —
PROPERTY LINE	— X —
R.O.W. TAKING LINE	— X —
SLOPE RIGHTS	— X —
TOP OF CUT	— X —
TOE OF SLOPE	— X —

Beginning approach started at 369+46 per construction As Built

*Begin Town: GROTON
END TOWN: RYEGATE
ROUTE: US 302
111780073*

ALL DRIVES AS INDICATED ON PLANS
ARE SUBJECT TO PERMITS PURSUANT
TO TITLE 19 SECTION III, V.S.A.

DATUM

VERTICAL	NGVD 1929
HORIZONTAL	N/A

DuBois & King
engineer/planner
planning management development

THESE PLANS ARE SUBJECT TO SUCH ENGINEERING CHANGES AS WILL BE REQUIRED BY THE FEDERAL HIGHWAY ADMINISTRATION OR THE CHIEF ENGINEER. CONSTRUCTION IS TO BE CARRIED ON IN ACCORDANCE WITH THESE PLANS AND THE STANDARD SPECIFICATIONS FOR CONSTRUCTION DATED 1990, AS APPROVED BY THE FEDERAL HIGHWAY ADMINISTRATION ON MARCH 15, 1990 FOR USE ON THIS PROJECT, INCLUDING ALL SUBSEQUENT REVISIONS AND SUCH REVISED SPECIFICATIONS AND SPECIAL PROVISIONS AS ARE INCORPORATED IN THESE PLANS.

APPROVED: *[Signature]* DATE: *5/1/94*
Director of Engineering

APPROVED: *[Signature]* DATE: *5/1/94*
Chief, Right of Way

GROTON- RYEGATE
STP F 026-1(30)
R.O.W. SHEET 1 OF 24 SHEETS

D-10 SRS 12/17/70