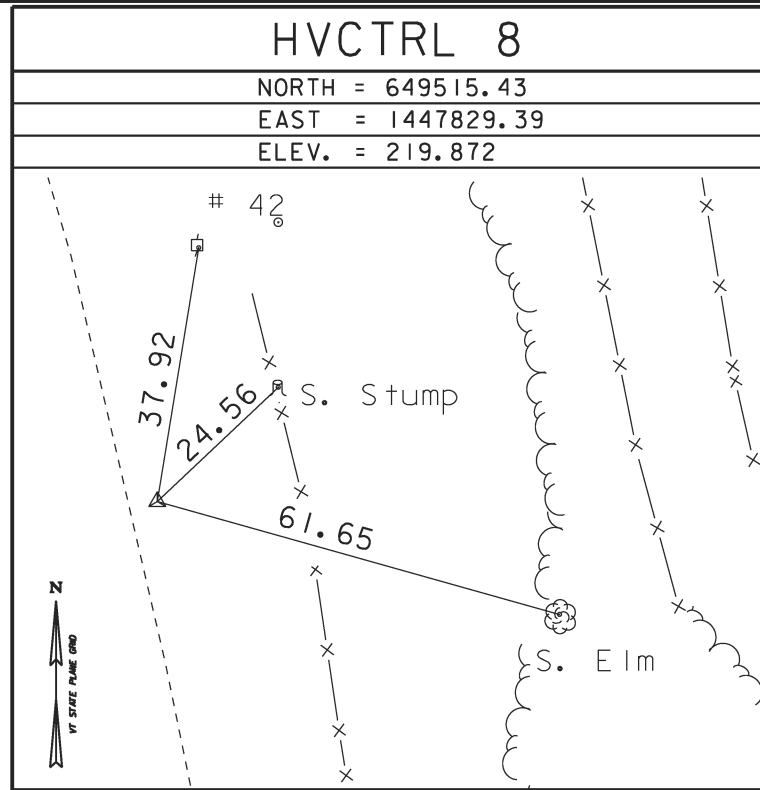
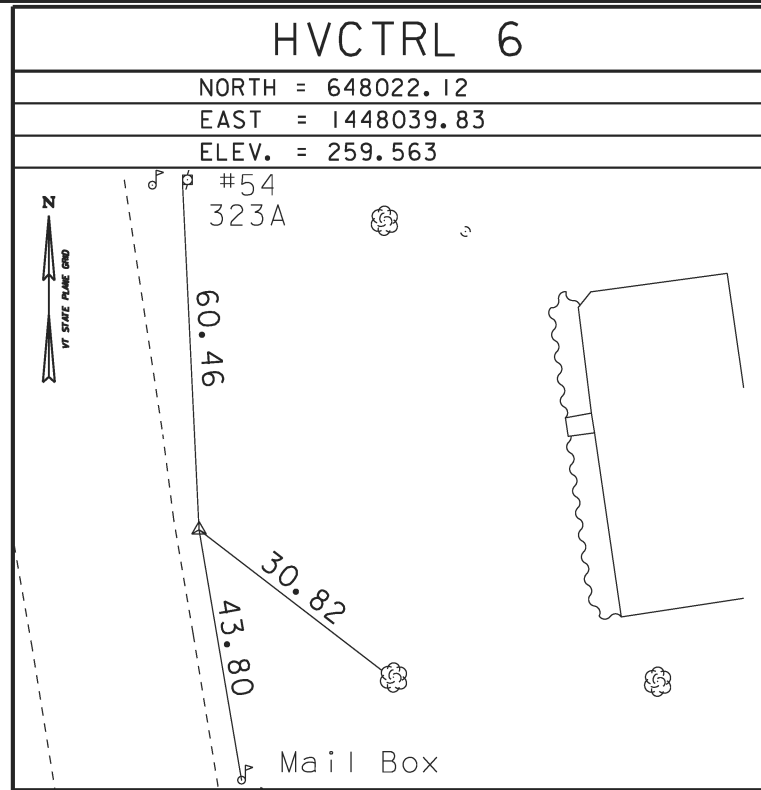
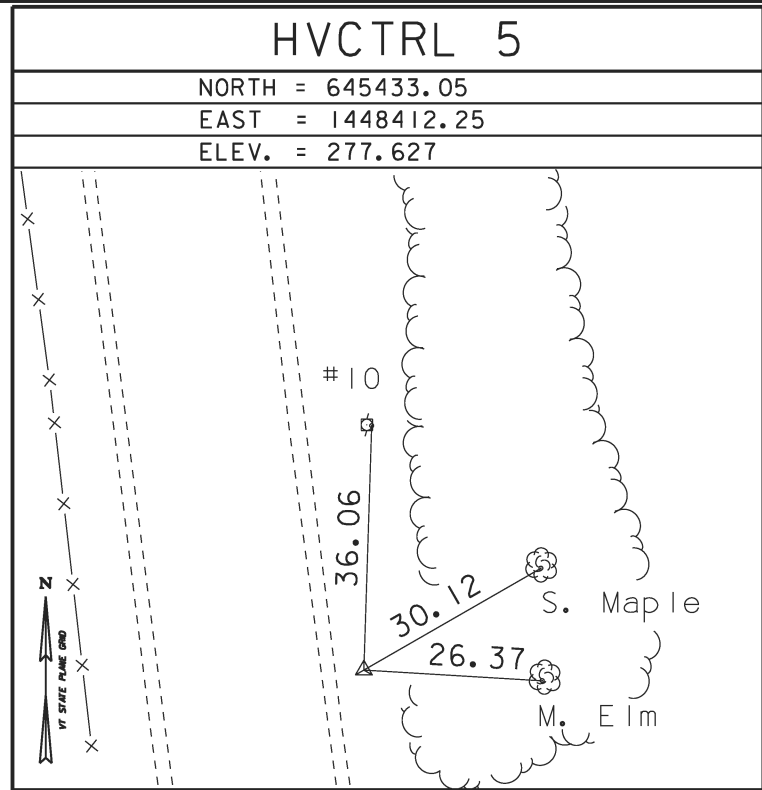
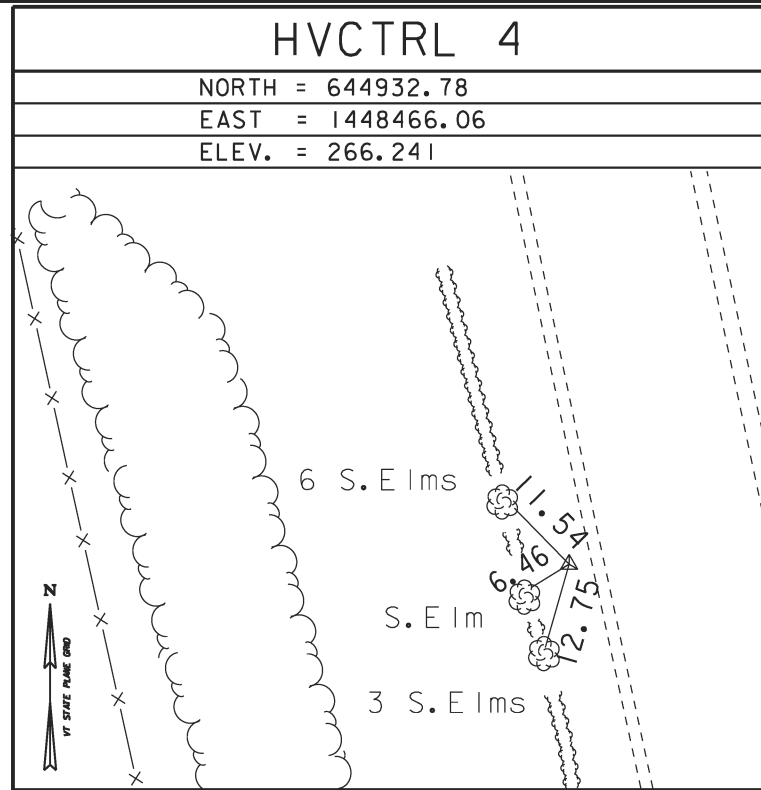
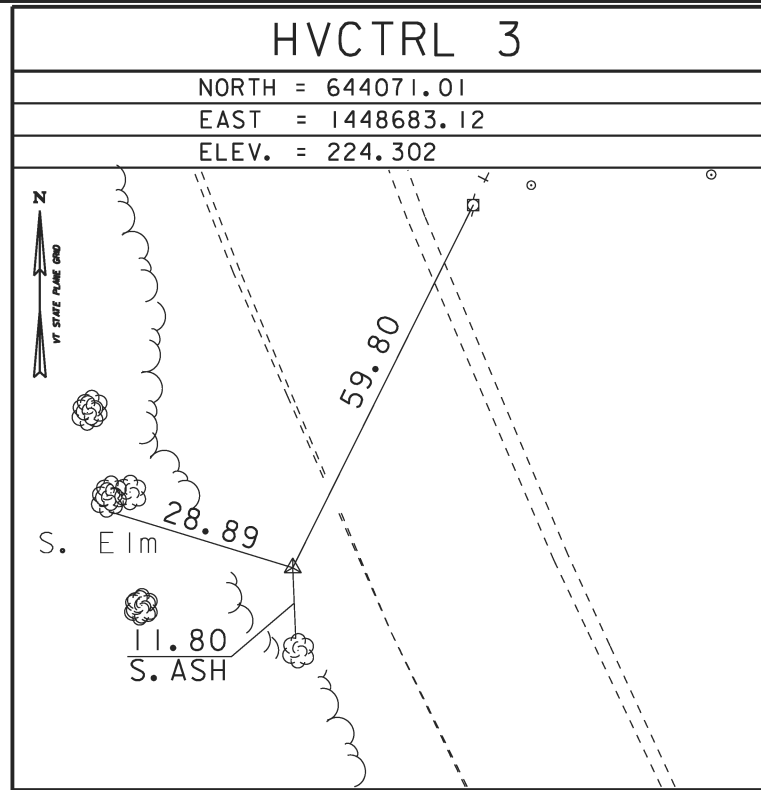
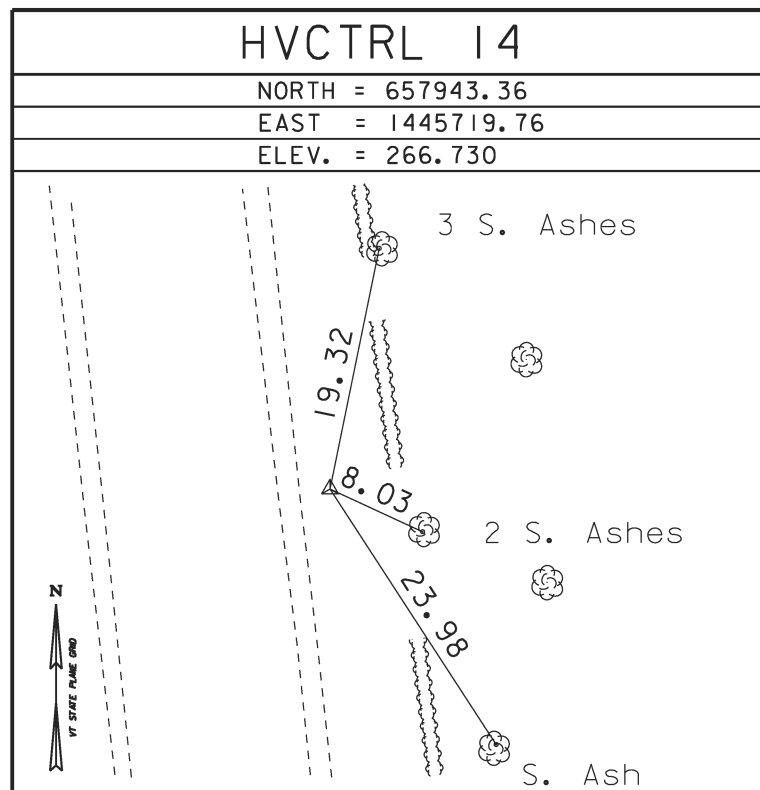
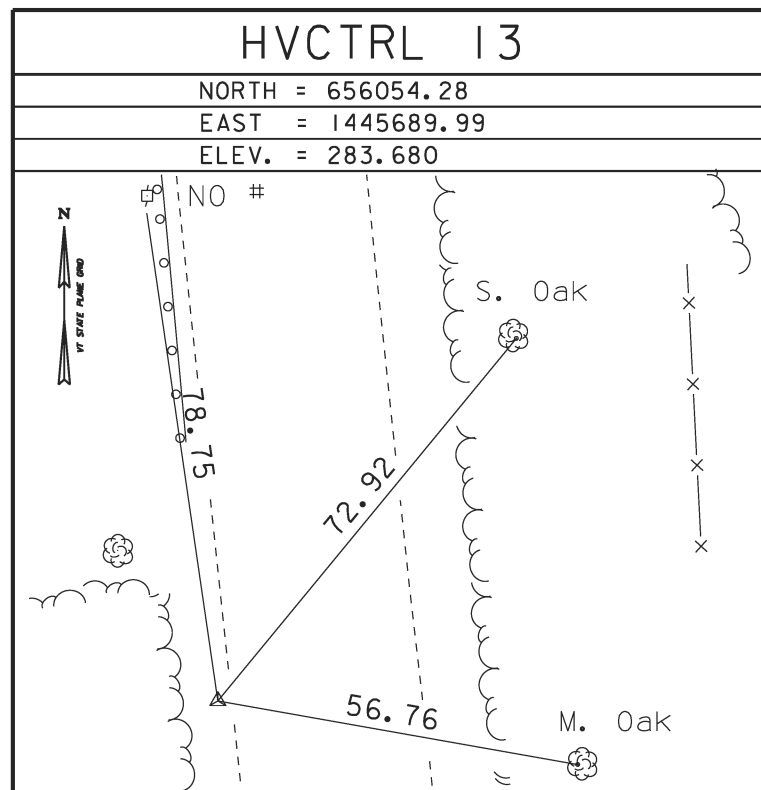
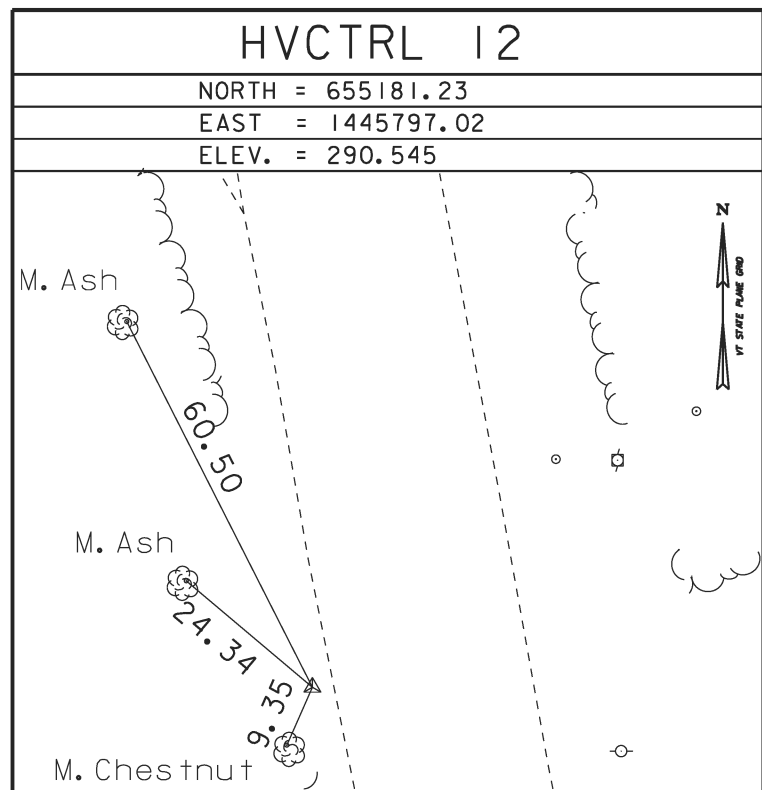
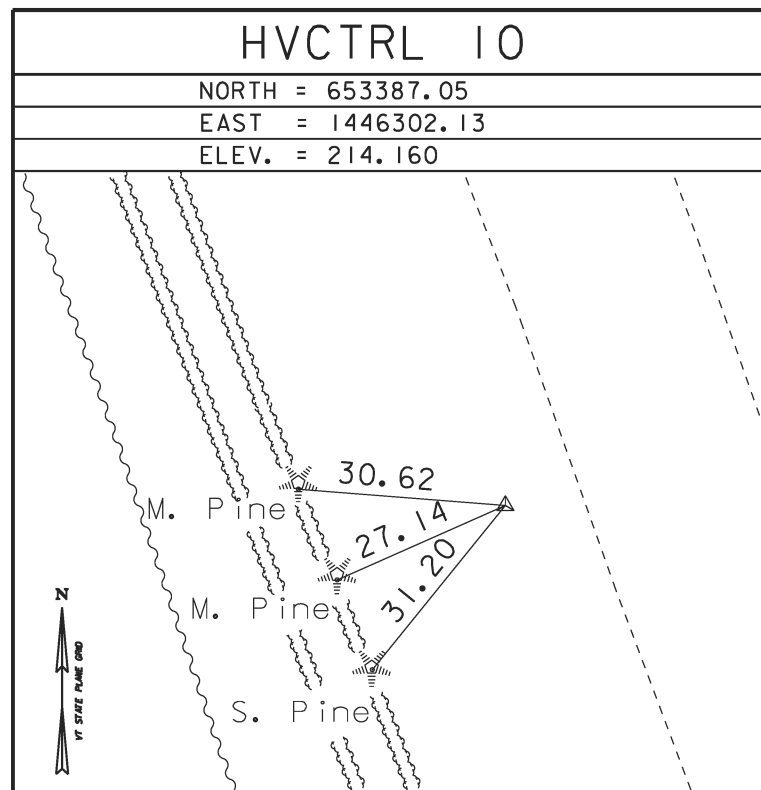
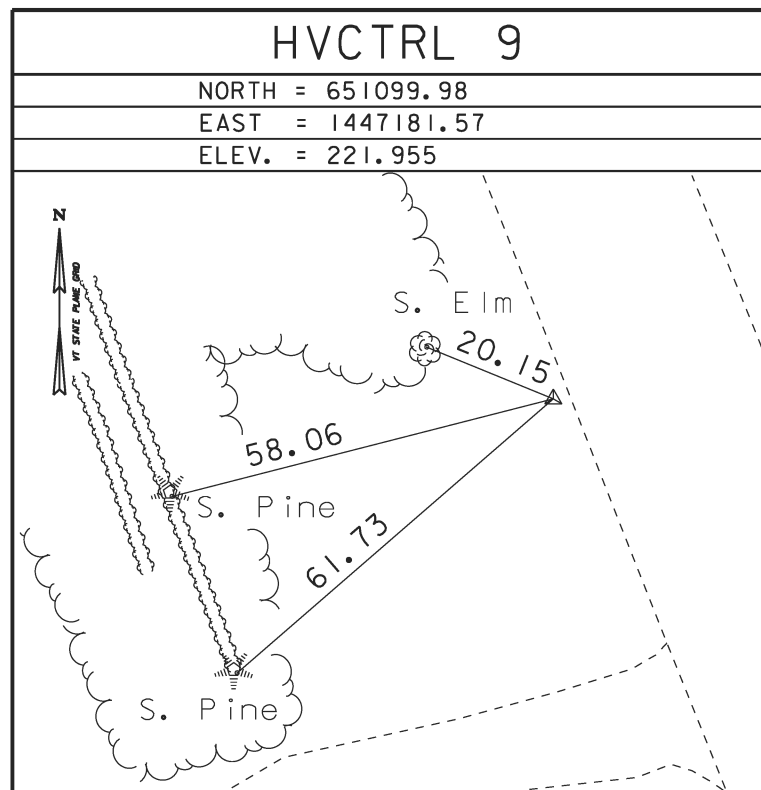


TRAVERSE TIES



• MAIN TRAVERSE COMPLETED 01/22/03 by R. Gilman P.C. & P. Winters & D. breer

TRAVERSE TIES



ALIGNMENT TIES

NORTH =
 EAST =

NORTH =
 EAST =

NORTH =
 EAST =

NORTH =
 EAST =

NORTH =
 EAST =

• ALIGNMENT STAKED

| | |
|------------|-------------|
| DATUM | |
| VERTICAL | NGVD 88 |
| HORIZONTAL | NAD 88 (96) |
| ADJUSTMENT | Compass |

| | |
|-----------------|-----------------------------|
| PROJECT NAME: | CHARLOTTE |
| PROJECT NUMBER: | FEGC 019-4(20) |
| FILE NAME: | 78d062/survey/x78d062t1.dgn |
| PROJECT LEADER: | K. UPMAL |
| DESIGNED BY: | B. KIPP |
| TISHEET | 2 |
| PLOT DATE: | 03-APR-2013 |
| DRAWN BY: | R. BULLOCK |
| CHECKED BY: | SURVEY |
| SHEET | 38 OF 132 |