

CONSTRUCT GRAVEL DRIVES		
LOCATION/TYPE	RADII STA/OFFSET	APPROX. WIDTH
STA 153+54 RT/(R)	STA 153+21.78/34.00 FT STA 153+77.25/42.00 FT	28 FT
STA 154+91 LT/(R)	STA 154+77.80/32.00 FT STA 155+14.59/32.00 FT	12 FT
STA 157+25 RT/(R)	STA 157+06.20/32.00 FT STA 157+43.85/32.00 FT	14 FT

**RELOCATE MAILBOX, MULTIPLE SUPPORT**  
 STA 153+65 RT  
 STA 156+31 RT

**STEEL BEAM GUARDRAIL, GALVANIZED**  
 STA 132+90 - 154+42 LT  
 STA 155+63 - 162+89 LT

**MANUFACTURED TERMINAL SECTION, FLARED**  
 STA 154+42 - 154+81 LT  
 STA 155+25 - 155+63 LT

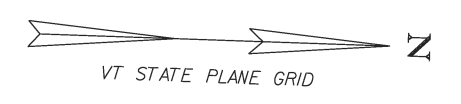
**REMOVAL AND DISPOSAL OF GUARDRAIL**  
 STA 140+17 - 153+64 LT

**REMOVAL AND DISPOSAL OF GUIDE POSTS**  
 STA 154+07 LT  
 STA 156+37 LT

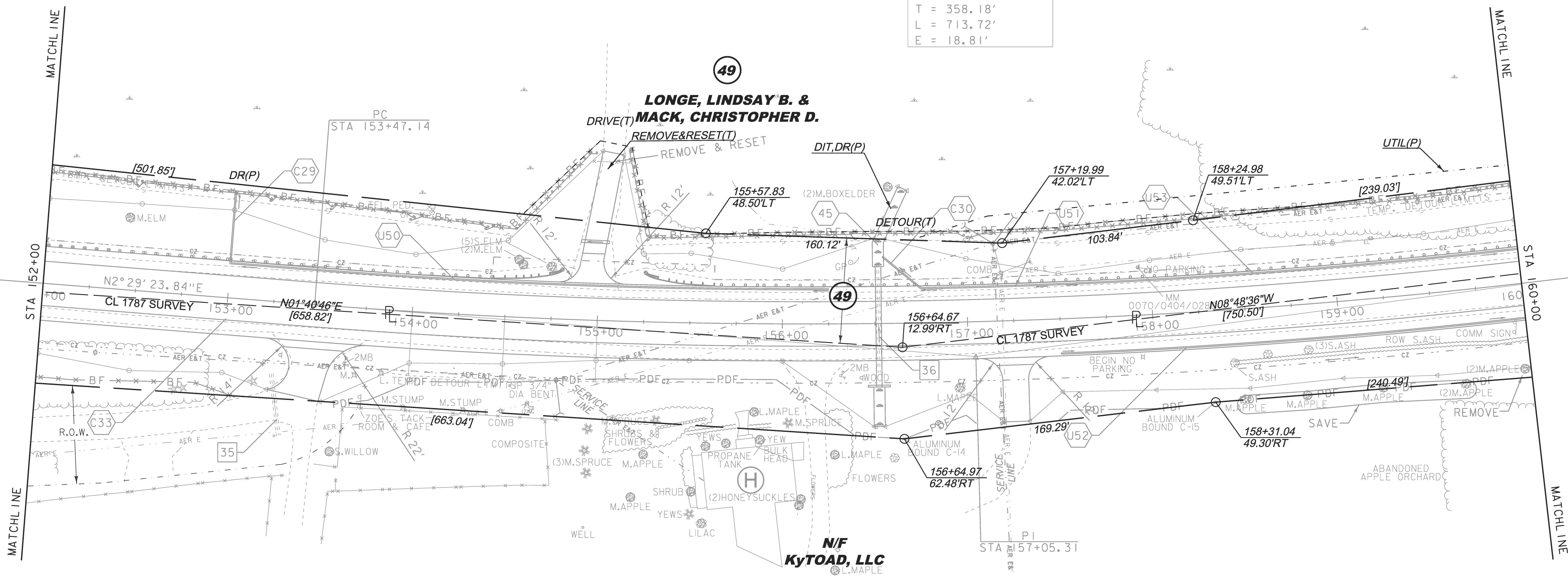
**REMOVING AND RESETTING FENCE**  
 STA 154+93 - 155+17 LT

**SPECIAL PROVISION (REMOVE AND RESET COMMERCIAL SIGN)**  
 STA 153+75 RT

**SPECIAL PROVISION (HAND-PLACED BITUMINOUS CONCRETE, DRIVES)**  
 STA 153+55 RT  
 STA 154+93 LT  
 STA 157+25 RT



CURVE #11 DATA	
DELTA	= 12° 01' 39"
D	= 1° 41' 07"
R	= 3400.00'
T	= 358.18'
L	= 713.72'
E	= 18.81'



EXISTING DRAINAGE		NEW DRAINAGE		8-INCH UNDERDRAIN		8-INCH UNDERDRAIN CARRIER PIPE	
35	STA 153+30 RT RETAIN 24" RCP	45	STA 156+52 C/L REMOVE EXISTING 24" RCP NEW 36" X 65' PIPE OPTION W/TYP E 11 STONE PAD AT INLET AND OUTLET	U50	STA 153+00 - 156+25 LT NEW 8" X 325' UNDERDRAIN W/FLUSHING BASIN AT 156+25 LT @ 0.50% SLOPE	U52	STA 157+50 - 160+68 RT NEW 8" X 320' UNDERDRAIN W/FLUSHING BASIN AT 157+50 LT @ 0.50% SLOPE
36	STA 156+52 C/L REMOVE 24" RCP			U51	STA 156+75 - 157+50 LT NEW 8" X 75' UNDERDRAIN W/FLUSHING BASIN AT 157+50 RT @ 0.50% SLOPE	U53	STA 157+50 - 160+68 LT NEW 8" X 318' UNDERDRAIN W/FLUSHING BASIN AT 157+50 LT @ 0.50% SLOPE
						C29	STA 153+00 LT NEW 8" X 40' UD CARRIER PIPE
						C30	STA 156+53 - 156+75 LT NEW 8" X 27' UD CARRIER PIPE

THIS PROJECT SUBJECT TO STORMWATER PERMIT 3438-INDS



LINES SHOWN ON THIS PLAN AS EXISTING PROPERTY LINES P/L ARE BELIEVED TO BE ACCURATE BUT SHOULD NOT BE RELIED UPON FOR PURPOSES UNRELATED TO THE STATE OF VERMONT'S ACQUISITION OF LAND AND RIGHTS FOR THIS PROJECT.

PROJECT NAME:	CHARLOTTE	PLOT DATE:	26-FEB-2015
PROJECT NUMBER:	F EGC 019-4(20)	DRAWN BY:	E. PIERCE
FILE NAME:	r78d062_lay19.dgn	CHECKED BY:	E. PIERCE
PROJECT LEADER:	K. UPMAL	SHEET	33 OF 132
DESIGNED BY:	B. KIPP	ROW LAYOUT SHEET	19 OF 20

**FOR R.O.W. USE ONLY**