

CONSTRUCT GRAVEL DRIVES		
LOCATION/TYPE	RADIUS STA/OFFSET	APPROX. WIDTH
STA 141+86 RT/(C)	STA 141+51.55/42.02 FT STA 142+23.95/42.06 FT	26 FT

RELOCATE MAILBOX, MULTIPLE SUPPORT
STA 142+08 RT

REMOVING AND RESETTING FENCE
STA 136+00 - 140+73 LT (IN-USE WOVEN WIRE)

REMOVAL OF EXISTING FENCE
STA 139+90 - 140+37 RT (ABANDONED BARBED WIRE)
STA 140+91 - 141+44 RT (ABANDONED BARBED WIRE)
STA 142+18 - 144+00 RT (ABANDONED BARBED WIRE)

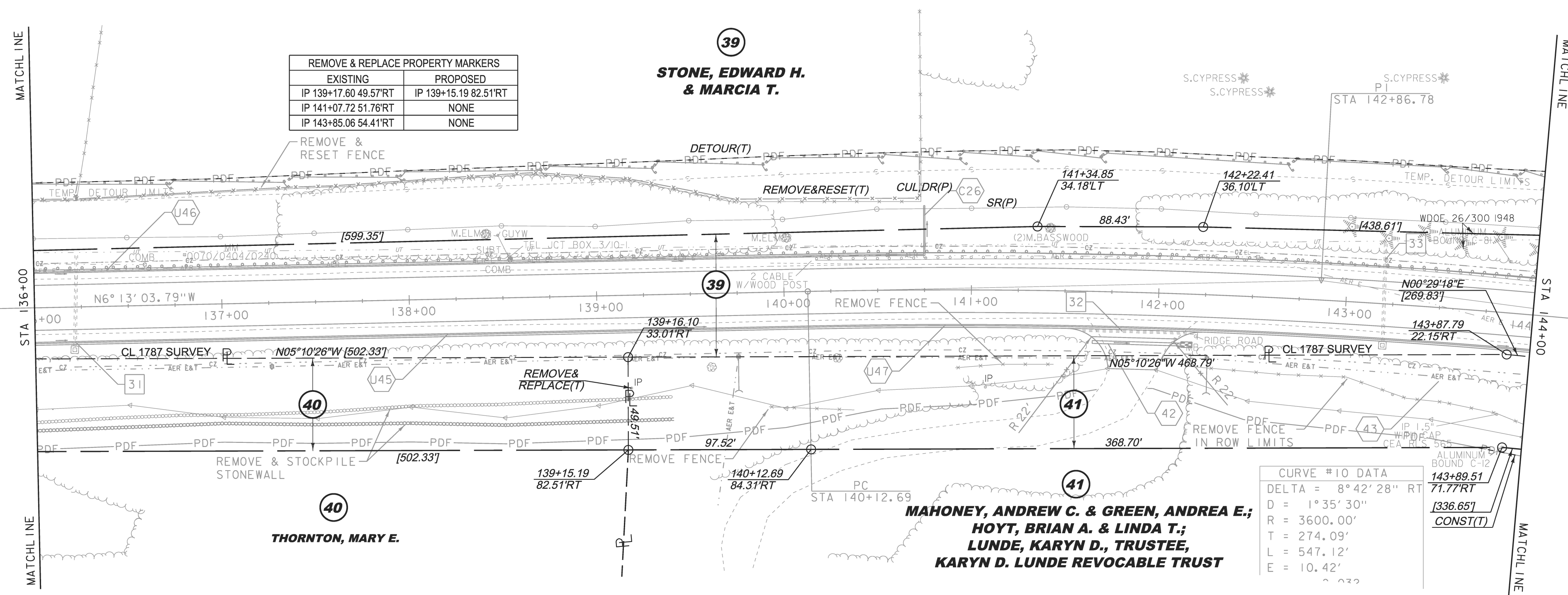
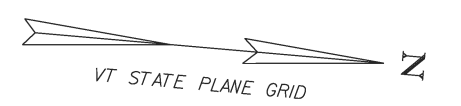
STEEL BEAM GUARDRAIL, GALVANIZED
STA 132+90 - 144+00 LT

REMOVAL AND DISPOSAL OF GUARDRAIL
STA 140+17 - 144+00 LT

SPECIAL PROVISION (HAND-PLACED BITUMINOUS CONCRETE, DRIVES)
STA 141+89 RT

REMOVE STONEWALL (COMMON EXCAVATION)
STA 134+87 - 139+39 RT

SPECIAL PROVISION (REMOVE AND STOCKPILE STONEWALL)
STA 134+87 - 139+39 RT



REMOVE & REPLACE PROPERTY MARKERS	
EXISTING	PROPOSED
IP 139+17.60 49.57'RT	IP 139+15.19 82.51'RT
IP 141+07.72 51.76'RT	NONE
IP 143+85.06 54.41'RT	NONE

CURVE #10 DATA	
DELTA =	8°42'28" RT
D =	1°35'30"
R =	3600.00'
T =	274.09'
L =	547.12'
E =	10.42'

EXISTING DRAINAGE		NEW DRAINAGE		8-INCH UNDERDRAIN		8-INCH UNDERDRAIN CARRIER PIPE	
31	STA 136+22 C/L REMOVE 18" RCP AND DI	42	STA 141+65 - 142+13 RT NEW 18" X 47" PIPE OPTION	U45	STA 135+00 - 139+50 RT NEW 8" X 450' UNDERDRAIN W/FLUSHING BASIN AT 135+00 RT	C26	STA 140+75 LT NEW 8" X 27' UD CARRIER PIPE
32	STA 141+60 - 142+20 RT REMOVE 15" CGMP	43	STA 143+80 - 148+30 RT CONSTRUCT GRASS LINED TREATMENT SWALE SEE TYPICAL SECTIONS	U46	STA 135+00 - 140+75 LT NEW 8" X 575' UNDERDRAIN W/FLUSHING BASIN AT 135+00 LT		
33	STA 143+20 C/L REMOVE 18" RCP AND DI			U47	STA 139+50 - 145+00 RT NEW 8" X 550' UNDERDRAIN W/FLUSHING BASIN AT 139+50 RT		



LINES SHOWN ON THIS PLAN AS EXISTING PROPERTY LINES P/L ARE BELIEVED TO BE ACCURATE BUT SHOULD NOT BE RELIED UPON FOR PURPOSES UNRELATED TO THE STATE OF VERMONT'S ACQUISITION OF LAND AND RIGHTS FOR THIS PROJECT.

PROJECT NAME: CHARLOTTE
PROJECT NUMBER: F EGC 019-4(20)

FILE NAME: r78d062_lay17.dgn
PROJECT LEADER: K. UPMAL
DESIGNED BY: B. KIPP
ROW LAYOUT SHEET 17 OF 20

PLOT DATE: 24-MAR-2015
DRAWN BY: E. PIERCE
CHECKED BY: E. PIERCE
SHEET 31 OF 132

THIS PROJECT SUBJECT TO STORMWATER PERMIT 3438-INDS

FOR R.O.W. USE ONLY