

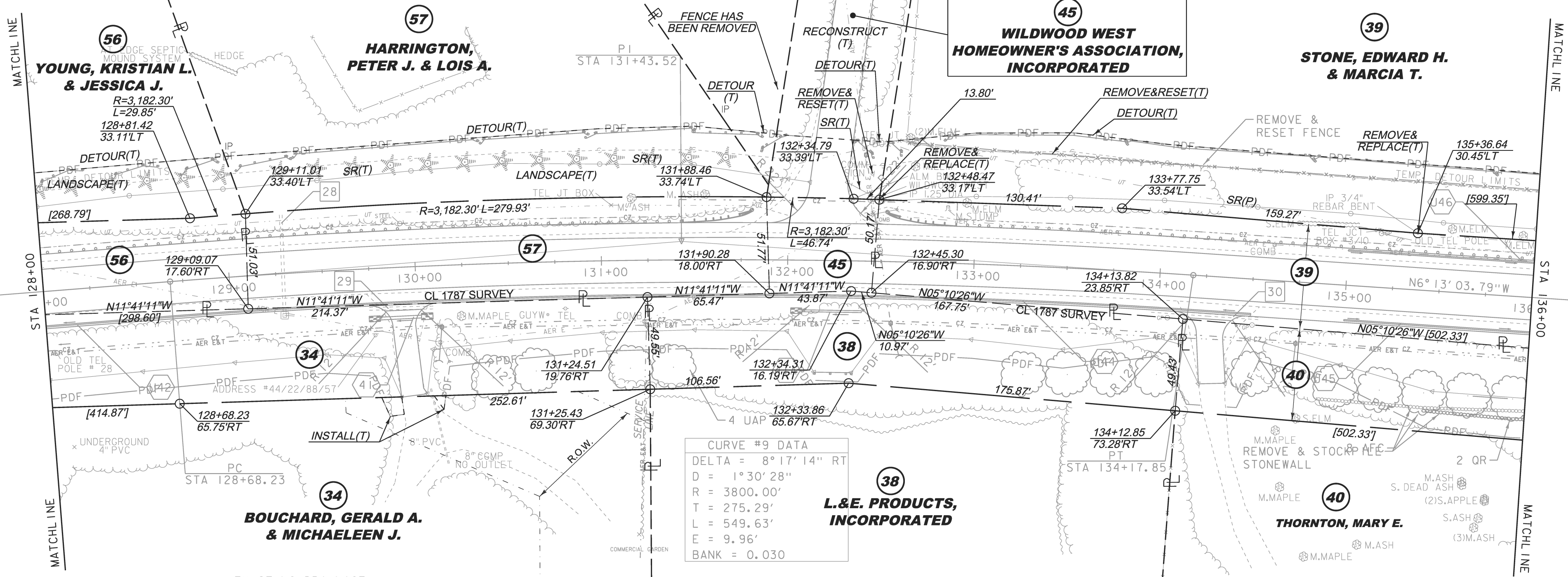
CONSTRUCT GRAVEL DRIVES		
LOCATION/TYPE	RADIUS STA/OFFSET	APPROX. WIDTH
STA 129+90 RT/(R)	STA 129+74.49/32.00 FT STA 130+10.93/32.00 FT	14 FT
STA 132+25 RT/(F)	STA 132+02.81/32.00 FT STA 132+47.19/32.00 FT	20 FT
STA 134+31 RT/(R)	STA 134+09.57/32.00 FT STA 134+47.77/32.00 FT	14 FT

RELOCATE MAILBOX, SINGLE SUPPORT
 STA 134+39 LT
 REMOVING AND RESETTING FENCE
 STA 132+62 - 136+00 LT (IN-USE WOVEN WIRE)
 STEEL BEAM GUARDRAIL, GALVANIZED
 STA 128+00 - 131+44 LT
 STA 132+90 - 136+00 LT
 MANUFACTURED TERMINAL SECTION, FLARED
 STA 131+44 - 131+82 LT
 STA 132+52 - 132+90 LT
 REMOVAL AND DISPOSAL OF GUIDE POSTS
 STA 129+93 LT
 STA 134+05 RT
 STA 134+51 RT
 STA 135+17 LT

SPECIAL PROVISION (HAND-PLACED BITUMINOUS CONCRETE, DRIVES)
 STA 129+90 RT
 STA 132+25 RT
 STA 134+31 RT
 SPECIAL PROVISION (REMOVE AND STOCKPILE STONEWALL)
 STA 134+87 - 136+00 RT

CONSTRUCT PAVED DRIVES		
LOCATION/TYPE	RADIUS STA/OFFSET	APPROX. WIDTH
STA 132+13 LT/(C)	STA 131+89.50/42.00 FT STA 132+53.28/42.00 FT	20 FT

REMOVE & REPLACE PROPERTY MARKERS	
EXISTING	PROPOSED
IP 132+48.51 33.47/LT	IP 132+48.47 33.17/LT
IP 135+36.64 30.45/LT	BND SAME LOCATION



CURVE #9 DATA	
DELTA	= 8° 17' 14" RT
D	= 1° 30' 28"
R	= 3800.00'
T	= 275.29'
L	= 549.63'
E	= 9.96'
BANK	= 0.030

- | EXISTING DRAINAGE | NEW DRAINAGE | 8-INCH UNDERDRAIN |
|--|---|---|
| 28 STA 129+29 C/L
REMOVE 18" RCP AND D1 | 41 STA 129+80 - 130+02 RT
NEW 18" X 22' PIPE OPTION
W/STONE PAD AT INLET & OUTLET | J42 STA 128+00 - 129+00 RT
NEW 8" X 500' UNDERDRAIN
W/FLUSHING BASIN AT 129+00 RT |
| 29 STA 129+74 - 130+09 RT
REMOVE 18" CGMP | 41A STA 132+08 - 132+40 RT
NEW 18" X 32' PIPE OPTION
W/STONE PAD AT OUTLET | J44 STA 129+00 - 134+50 RT
NEW 8" X 550' UNDERDRAIN
W/FLUSHING BASIN AT 134+50 RT |
| 30 STA 133+96 - 134+55 RT
REMOVE 15" CGMP | | J45 STA 135+00 - 136+00 RT
NEW 8" X 450' UNDERDRAIN
W/FLUSHING BASIN AT 135+00 RT |
| | | J46 STA 135+00 - 136+00 LT
NEW 8" X 575' UNDERDRAIN
W/FLUSHING BASIN AT 135+00 LT |

THIS PROJECT SUBJECT TO STORMWATER PERMIT 3438-INDS



LINES SHOWN ON THIS PLAN AS EXISTING PROPERTY LINES P/L ARE BELIEVED TO BE ACCURATE BUT SHOULD NOT BE RELIED UPON FOR PURPOSES UNRELATED TO THE STATE OF VERMONT'S ACQUISITION OF LAND AND RIGHTS FOR THIS PROJECT.

PROJECT NAME:	CHARLOTTE	PLOT DATE:	23-JUN-2015
PROJECT NUMBER:	F EGC 019-4(20)	DRAWN BY:	E. PIERCE
FILE NAME:	r78d062_lay16.dgn	CHECKED BY:	E. PIERCE
PROJECT LEADER:	K. UPMAL	ROW LAYOUT SHEET	16 OF 20
DESIGNED BY:	B. KIPP	SHEET	30 OF 132

FOR R.O.W. USE ONLY