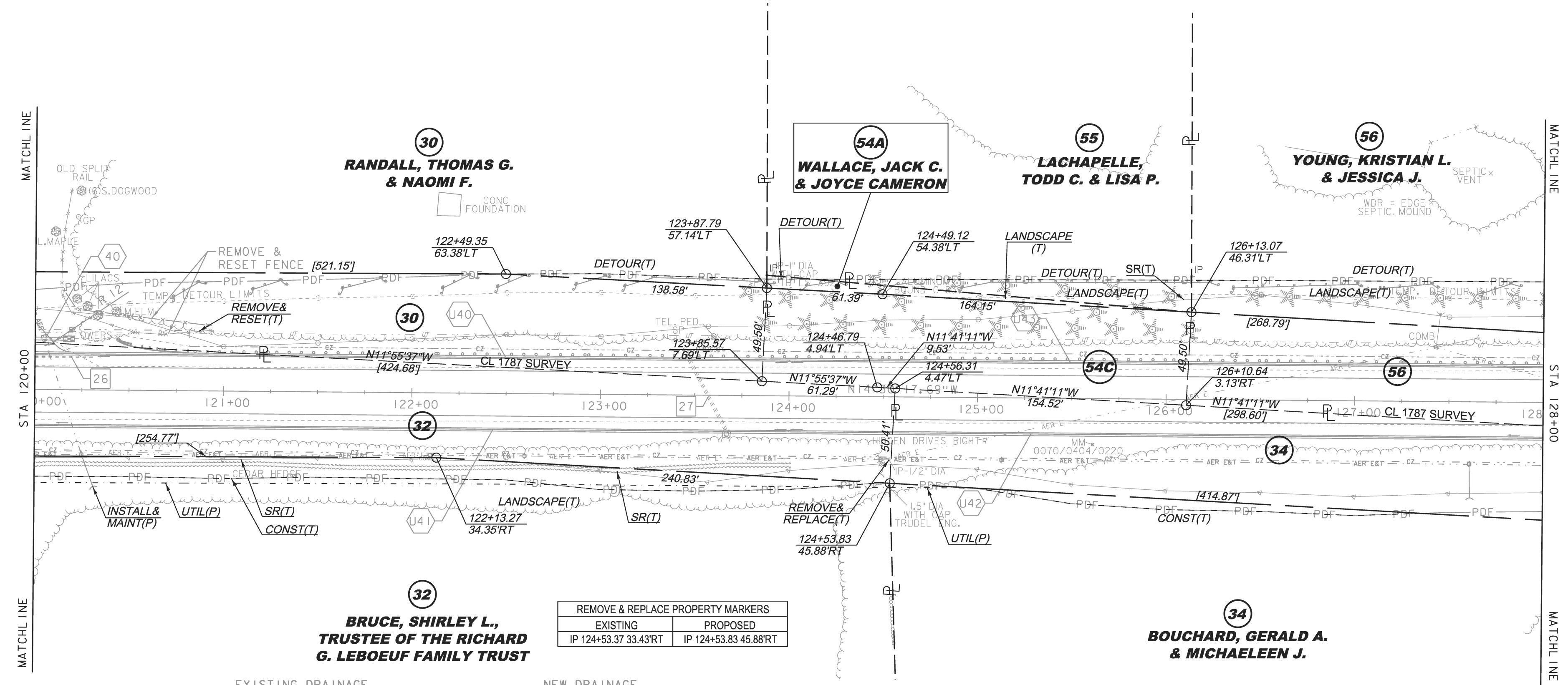
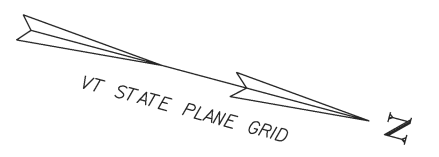


LOCATION/TYPE	RADIUS STA/OFFSET	APPROX. WIDTH
STA 120+17 LT/(R)	STA 119+79.01/30.00 FT STA 120+19.60/32.00 FT	10 FT

REMOVING AND RESETTING FENCE
 STA 120+14 - 120+94 LT (ORNAMENTAL WOOD POST & RAIL)
 STEEL BEAM GUARDRAIL, GALVANIZED
 STA 120+81 - 128+00 LT
 MANUFACTURED TERMINAL SECTION, FLARED
 STA 120+43 - 120+81 LT
 REMOVAL AND DISPOSAL OF GUIDE POSTS
 STA 123+60 LT

SPECIAL PROVISION (HAND-PLACED BITUMINOUS CONCRETE, DRIVES)
 STA 120+17 LT



REMOVE & REPLACE PROPERTY MARKERS	
EXISTING	PROPOSED
IP 124+53.37 33.43'RT	IP 124+53.83 45.88'RT

EXISTING DRAINAGE		NEW DRAINAGE	
26	STA 120+00 - 120+32 LT REMOVE 15" CGMP	40	STA 120+00 - 120+15 LT NEW 18" X 40' PIPE OPTION W/STONE PAD @ INLET & OUTLET
27	STA 123+43 LT - 123+67 RT REMOVE 18" RCP AND D1	U40	STA 120+00 - 124+00 LT NEW 8" X 525' UNDERDRAIN W/FLUSHING BASIN AT 124+00 LT
		U41	STA 120+00 - 124+00 RT NEW 8" X 475' UNDERDRAIN W/FLUSHING BASIN AT 124+00 RT
		U42	STA 124+00 - 128+00 RT NEW 8" X 500' UNDERDRAIN W/FLUSHING BASIN AT 129+00 RT
		U43	STA 124+00 - 128+00 LT NEW 8" X 400' UNDERDRAIN W/FLUSHING BASIN AT 128+00 LT

THIS PROJECT SUBJECT TO STORMWATER PERMIT 3438-INDS



LINES SHOWN ON THIS PLAN AS EXISTING PROPERTY LINES P/L ARE BELIEVED TO BE ACCURATE BUT SHOULD NOT BE RELIED UPON FOR PURPOSES UNRELATED TO THE STATE OF VERMONT'S ACQUISITION OF LAND AND RIGHTS FOR THIS PROJECT.

PROJECT NAME: CHARLOTTE	PLOT DATE: 23-JUN-2015
PROJECT NUMBER: F EGC 019-4(20)	DRAWN BY: E. PIERCE
FILE NAME: r78d062_lay15.dgn	CHECKED BY: E. PIERCE
PROJECT LEADER: K. UPMAL	SHEET 29 OF 132
DESIGNED BY: B. KIPP	
ROW LAYOUT SHEET 15 OF 20	

FOR R.O.W. USE ONLY