

CONSTRUCT GRAVEL DRIVES		
LOCATION/TYPE	RADII STA/OFFSET	APPROX. WIDTH
STA 118+33 LT/(R)	STA 118+16.01/42.00 FT STA 118+50.83/42.00 FT	11 FT
STA 120+17 LT/(R)	STA 119+79.01/30.00 FT STA 120+19.60/32.00 FT	10 FT
CONSTRUCT PAVED DRIVES		
LOCATION/TYPE	RADII STA/OFFSET	APPROX. WIDTH
STA 117+12 RT/(R)	STA 116+92.78/32.00 FT STA 117+29.02/32.00 FT	11 FT

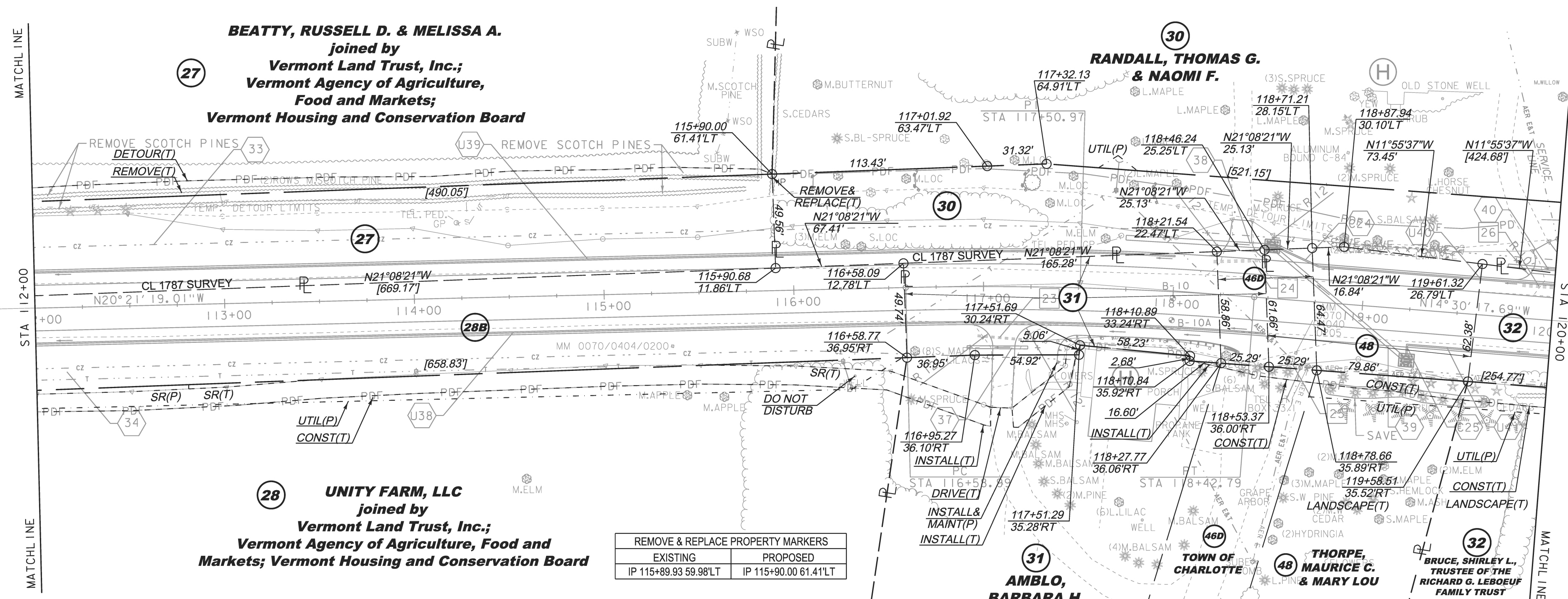
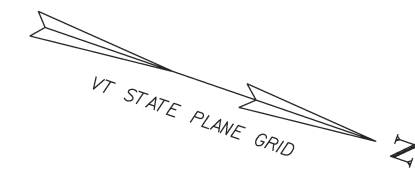
STEEL BEAM GUARDRAIL, GALVANIZED
STA 117+40 - 117+98 RT

MANUFACTURED TERMINAL SECTION, FLARED
STA 117+98 - 118+37 RT

REMOVAL AND DISPOSAL OF GUARDRAIL
STA 117+33 - 118+22 RT

REMOVAL AND DISPOSAL OF GUIDE POSTS
STA 114+23 LT
STA 117+72 LT

SPECIAL PROVISION (HAND-PLACED
BITUMINOUS CONCRETE, DRIVES)
STA 118+33 LT
STA 120+17 LT



REMOVE & REPLACE PROPERTY MARKERS	
EXISTING	PROPOSED
IP 115+89.93 59.98'LT	IP 115+90.00 61.41'LT

CURVE #8 DATA	
DELTA	= 5°51'01"
D	= 3°10'59"
R	= 1800.00'
T	= 91.98'
L	= 183.79'
E	= 2.35'

EXISTING DRAINAGE		NEW DRAINAGE		8-INCH UNDERDRAIN	
23	STA 116+96 - 117+28 RT REMOVE 12" CGMP	33	STA 106+50 - 112+50 LT CONSTRUCT GRASS LINED TREATMENT SWALE SEE TYPICAL SECTIONS	U38	STA 111+50 - 118+50 RT NEW 8" X 700' UNDERDRAIN W/FLUSHING BASIN AT 118+50 RT
24	STA 118+20 - 118+46 LT REMOVE 15" CGMP	34	STA 106+60 - 112+80 RT CONSTRUCT GRASS LINED TREATMENT SWALE SEE TYPICAL SECTIONS	U39	STA 111+50 - 118+00 LT NEW 8" X 650' UNDERDRAIN W/FLUSHING BASIN AT 118+00 LT
25	STA 118+64 RT REMOVE	37	STA 116+91 - 117+24 RT NEW 18" X 32' PIPE OPTION	U40	STA 118+75 - 124+00 LT NEW 8" X 525' UNDERDRAIN W/FLUSHING BASIN AT 124+00 LT
26	STA 119+83 - 120+32 LT REMOVE 15" CGMP	38	STA 117+74 - 118+49 LT NEW 30" X 75' PIPE OPTION NEW PRCCB W/TYP B GRATE	U41	STA 119+25 - 124+00 RT NEW 8" X 475' UNDERDRAIN W/FLUSHING BASIN AT 124+00 RT
		39	STA 118+51 LT - 119+24 RT NEW 24" X 90' PIPE OPTION NEW PRCCB W/TYP B GRATE		
		40	STA 119+75 - 120+15 LT NEW 18" X 40' PIPE OPTION		



THIS PROJECT SUBJECT TO STORMWATER PERMIT 3438-INDS

LINES SHOWN ON THIS PLAN AS EXISTING PROPERTY LINES P/L ARE BELIEVED TO BE ACCURATE BUT SHOULD NOT BE RELIED UPON FOR PURPOSES UNRELATED TO THE STATE OF VERMONT'S ACQUISITION OF LAND AND RIGHTS FOR THIS PROJECT.

PROJECT NAME:	CHARLOTTE	PLOT DATE:	05-JAN-2015
PROJECT NUMBER:	F EGC 019-4(20)	DRAWN BY:	E. PIERCE
FILE NAME:	r78d062_lay14.dgn	CHECKED BY:	E. PIERCE
PROJECT LEADER:	K. UPMAL	SHEET	28 OF 132
DESIGNED BY:	B. KIPP	ROW LAYOUT SHEET	14 OF 20

FOR R.O.W. USE ONLY