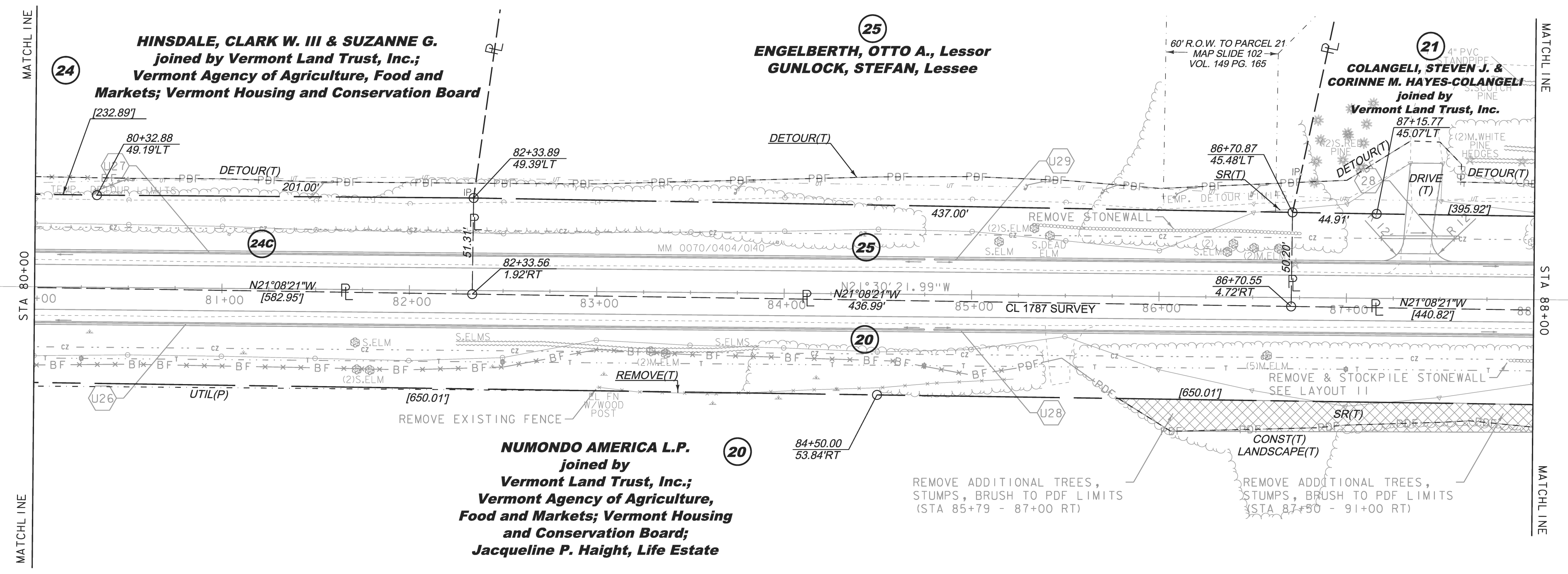
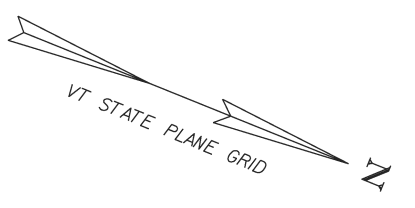


CONSTRUCT GRAVEL DRIVES		
LOCATION/TYPE	RADII STA/OFFSET	APPROX. WIDTH
STA 87+34 LT/(R)	STA 87+18.04/32.00 FT STA 87+56.96/32.00 FT	13 FT

REMOVE STONEWALL (COMMON EXCAVATION)  
 STA 85+32 - 86+76 LT  
 REMOVAL OF EXISTING FENCE  
 STA 83+00 - 85+23 RT (ABANDONED BARBED WIRE)

SPECIAL PROVISION (REMOVE AND STOCKPILE STONEWALL)  
 STA 87+87 - 91+42 RT  
 SPECIAL PROVISION (HAND-PLACED BITUMINOUS CONCRETE, DRIVES)  
 STA 87+36 LT



NEW DRAINAGE		8-INCH UNDERDRAIN	
U28	STA 87+19 - 87+60 LT NEW 18" X 41' PIPE OPTION	U26	STA 80+00 - 84+75 RT NEW 8" X 475' UNDERDRAIN W/FLUSHING BASIN AT 84+75 RT
		U27	STA 80+00 - 84+75 LT NEW 8" X 475' UNDERDRAIN W/FLUSHING BASIN AT 84+75 LT
		U28	STA 84+80 - 88+91 RT NEW 8" X 411' UNDERDRAIN W/FLUSHING BASIN AT 84+80 RT
		U29	STA 84+80 - 88+82 LT NEW 8" X 402' UNDERDRAIN W/FLUSHING BASIN AT 84+80 LT

THIS PROJECT SUBJECT TO STORMWATER PERMIT 3438-INDS



LINES SHOWN ON THIS PLAN AS EXISTING PROPERTY LINES P/L ARE BELIEVED TO BE ACCURATE BUT SHOULD NOT BE RELIED UPON FOR PURPOSES UNRELATED TO THE STATE OF VERMONT'S ACQUISITION OF LAND AND RIGHTS FOR THIS PROJECT.

PROJECT NAME: CHARLOTTE	
PROJECT NUMBER: F EGC 019-4(20)	
FILE NAME: r78d062_lay10.dgn	PLOT DATE: 05-JAN-2015
PROJECT LEADER: K. UPMAL	DRAWN BY: E. PIERCE
DESIGNED BY: B. KIPP	CHECKED BY: E. PIERCE
ROW LAYOUT SHEET 10 OF 20	SHEET 24 OF 132

**FOR R.O.W. USE ONLY**