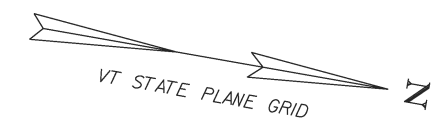


CONSTRUCT GRAVEL DRIVES		
LOCATION/TYPE	RADII STA/OFFSET	APPROX. WIDTH
STA 65+81 RT/(C)	STA 65+50.92/40.00 FT STA 66+10.92/40.00 FT	20 FT
STA 66+70 LT/(R)	STA 66+37.99/40.00 FT STA 67+02.00/40.00 FT	24 FT
STA 68+67 RT/(C)	STA 68+37.00/40.00 FT STA 68+97.00/40.00 FT	20 FT

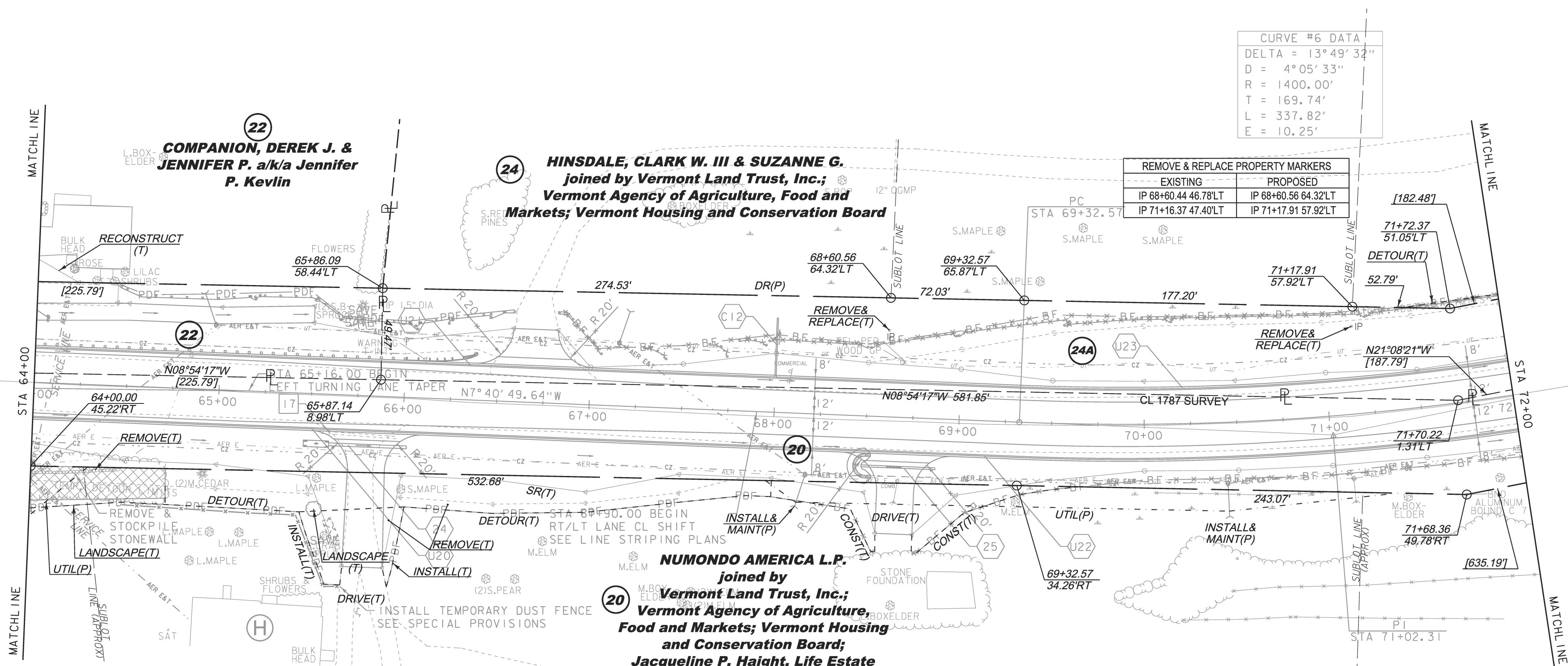
STEEL BEAM GUARDRAIL, GALVANIZED
 STA 63+75 - 66+00 LT
 MANUFACTURED TERMINAL SECTION, FLARED
 STA 66+00 - 66+38 LT
 REMOVAL AND DISPOSAL OF GUIDE POSTS
 STA 68+68 LT

SPECIAL PROVISION (REMOVE AND STOCKPILE STONEMALL)
 STA 60+79 - 64+48 RT
 SPECIAL PROVISION (HAND-PLACED BITUMINOUS CONCRETE, DRIVES)
 STA 65+81 RT
 STA 66+70 LT
 STA 68+67 RT
 SPECIAL PROVISION (TEMPORARY DUST FENCE)
 STA 64+50 - 65+70 RT



CURVE #6 DATA	
DELTA	= 13° 49' 34"
D	= 4° 05' 33"
R	= 1400.00'
T	= 169.74'
L	= 337.82'
E	= 10.25'

REMOVE & REPLACE PROPERTY MARKERS	
EXISTING	PROPOSED
IP 68+60.44 46.78'LT	IP 68+60.56 64.32'LT
IP 71+16.37 47.40'LT	IP 71+17.91 57.92'LT



- | | | | |
|--|--|--|--|
| EXISTING DRAINAGE | NEW DRAINAGE | 8-INCH UNDERDRAIN | 8-INCH UNDERDRAIN CARRIER PIPE |
| 17 STA 65+56 - 65+97 RT
REMOVE 15" CGMP | 24 STA 65+60 - 66+02 RT
NEW 18" X 42' PIPE OPTION
W/STONE PAD AT INLET | U20 STA 61+50 - 68+00 RT
NEW 8" X 650' UNDERDRAIN
W/FLUSHING BASIN AT 61+50 RT | C12 STA 68+00 LT
NEW 8" X 32' UD CARRIER PIPE |
| | 25 STA 68+48 - 68+88 RT
NEW 12" X 40' PIPE OPTION | U21 STA 61+50 - 68+00 LT
NEW 8" X 650' UNDERDRAIN
W/FLUSHING BASIN AT 61+50 LT | |
| | | U22 STA 68+00 - 75+11 RT
NEW 6" X 711' UNDERDRAIN
W/FLUSHING BASIN AT 68+00 RT | |
| | | U23 STA 68+00 - 75+11 LT
NEW 6" X 711' UNDERDRAIN
W/FLUSHING BASIN AT 68+00 LT | |

THIS PROJECT SUBJECT TO STORMWATER PERMIT 3438-INDS



LINES SHOWN ON THIS PLAN AS EXISTING PROPERTY LINES P/L ARE BELIEVED TO BE ACCURATE BUT SHOULD NOT BE RELIED UPON FOR PURPOSES UNRELATED TO THE STATE OF VERMONT'S ACQUISITION OF LAND AND RIGHTS FOR THIS PROJECT.

PROJECT NAME:	CHARLOTTE	PLOT DATE:	05-JAN-2015
PROJECT NUMBER:	F EGC 019-4(20)	DRAWN BY:	E. PIERCE
FILE NAME:	r78d062_lay08.dgn	CHECKED BY:	E. PIERCE
PROJECT LEADER:	K. UPMAL	ROW LAYOUT SHEET	8 OF 20
DESIGNED BY:	B. KIPP	SHEET	22 OF 132

FOR R.O.W. USE ONLY