

CONSTRUCT GRAVEL DRIVES		
LOCATION/TYPE	RADIUS STA/OFFSET	APPROX. WIDTH
STA 56+10 LT/(R)	STA 55+88.06/32.00 FT STA 56+33.10/32.00 FT	21 FT
STA 60+16 LT/(R)	STA 59+88.92/40.00 FT STA 60+40.92/40.00 FT	12 FT

CONSTRUCT PAVED DRIVES		
LOCATION/TYPE	RADIUS STA/OFFSET	APPROX. WIDTH
STA 56+50 RT/(C)	STA 56+06.78/28.50 FT STA 56+74.52/28.50 FT	30 FT
STA 58+00 RT/(C)	STA 57+73.87/28.50 FT STA 58+41.20/50.00 FT	30 FT
STA 63+09 LT/(C)	STA 62+76.05/45.00 FT STA 63+50.00/45.00 FT	24 FT

RELOCATE MAILBOX, SINGLE SUPPORT
STA 56+30 RT
STA 63+29 LT

RELOCATE MAILBOX, MULTIPLE SUPPORT
STA 60+90 RT (3)

STEEL BEAM GUARDRAIL, GALVANIZED
STA 63+75 - 64+00 LT

MANUFACTURED TERMINAL SECTION, FLARED

STA 63+36 - 63+75 LT
SPECIAL PROVISION (REMOVAL OF EXISTING TRAFFIC CONTROL SYSTEM)

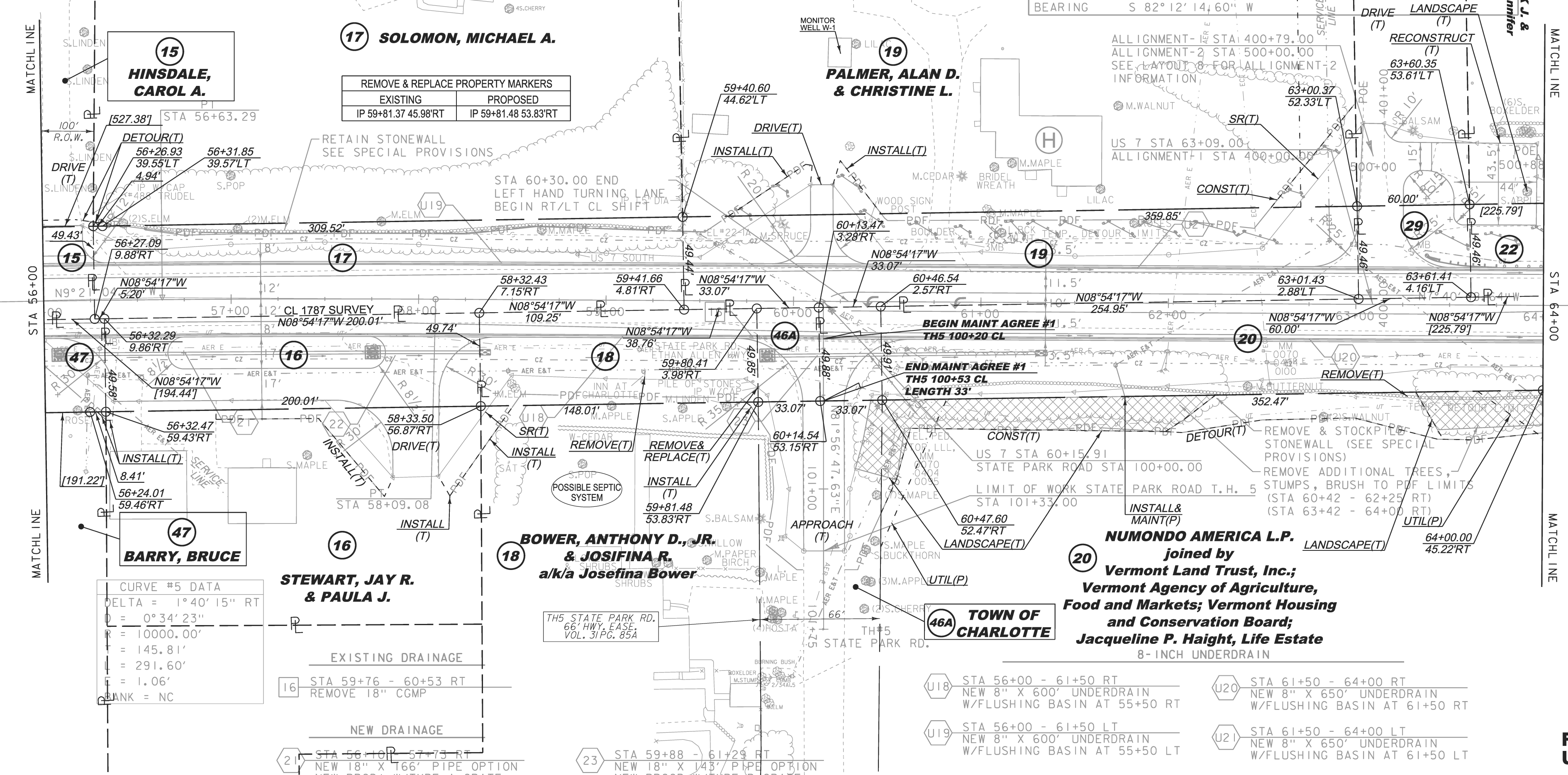
STA 60+16
SPECIAL PROVISION (REMOVE AND STOCKPILE STONEWALL)

STA 60+79 - 64+00 RT
SPECIAL PROVISION (HAND-PLACED BITUMINOUS CONCRETE, DRIVES)

STA 56+10 LT
STA 60+16 LT

DRIVE 63+09 LT ALIGNMENT INFORMATION			
	NORTHING	EASTING	
POB	400+00.00	648752.0693	1447919.95
POE	401+00.00	648738.5047	1447820.88
BEARING	S 82° 12' 14.60" W		

DRIVE 63+09 LT ALIGNMENT INFORMATION			
	NORTHING	EASTING	
POB	400+00.00	648752.0693	1447919.95
POE	401+00.00	648738.5047	1447820.88
BEARING	S 82° 12' 14.60" W		



REMOVE & REPLACE PROPERTY MARKERS	
EXISTING	PROPOSED
IP 59+81.37 45.98°RT	IP 59+81.48 53.83°RT

CURVE #5 DATA	
DELTA =	1° 40' 15" RT
D =	0° 34' 23"
R =	10000.00'
L =	145.81'
E =	291.60'
B =	1.06'
BANK =	NC

THIS PROJECT SUBJECT TO STORMWATER PERMIT 3438-INDS



LINES SHOWN ON THIS PLAN AS EXISTING PROPERTY LINES P/L ARE BELIEVED TO BE ACCURATE BUT SHOULD NOT BE RELIED UPON FOR PURPOSES UNRELATED TO THE STATE OF VERMONT'S ACQUISITION OF LAND AND RIGHTS FOR THIS PROJECT.

PROJECT NAME: CHARLOTTE
PROJECT NUMBER: F EGC 019-4(20)

FILE NAME: r78d062_lay07.dgn
PROJECT LEADER: K. UPMAL
DESIGNED BY: B. KIPP
ROW LAYOUT SHEET 7 OF 20

PLOT DATE: 20-MAY-2015
DRAWN BY: E. PIERCE
CHECKED BY: E. PIERCE
SHEET 21 OF 132

FOR R.O.W. USE ONLY