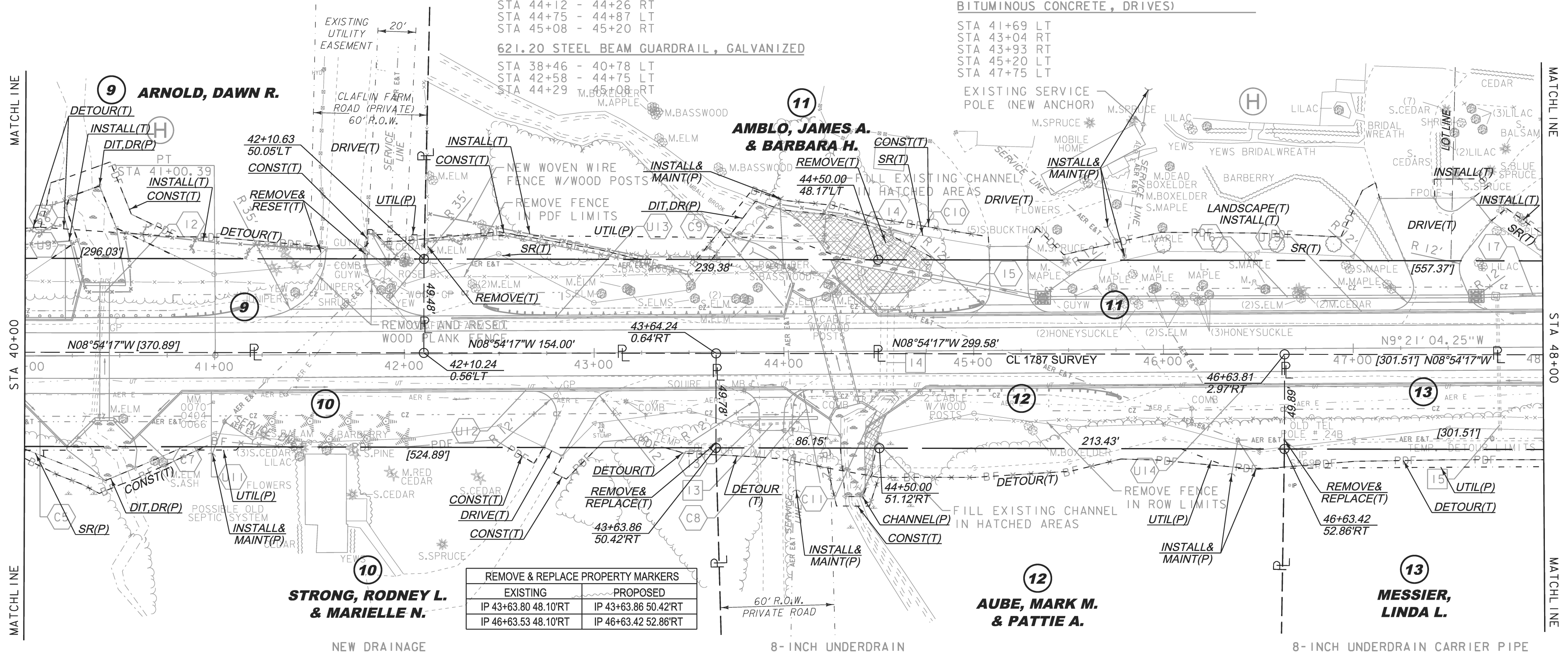


CONSTRUCT GRAVEL DRIVES		
LOCATION/TYPE	RADII STA/OFFSET	APPROX. WIDTH
STA 41+69 LT/(C)	STA 41+24.00/55.00 FT STA 42+14.00/55.00 FT	20 FT
STA 43+04 RT/(R)	STA 42+68.08/32.00 FT STA 43+10.04/32.00 FT	11 FT
STA 43+93 RT/(R)	STA 43+74.73/32.00 FT STA 44+12.05/32.00 FT	13 FT
STA 45+20 LT/(R)	STA 44+46.78/32.00 FT STA 45+40.91/32.00 FT	20 FT
STA 47+45 LT/(R)	STA 47+20.00/32.00 FT STA 47+72.16/32.00 FT	29 FT/15 FT

- 617.10 RELOCATE MAILBOX, SINGLE SUPPORT  
STA 43+82 RT
- 620.26 WOVEN WIRE FENCE WITH WOOD POSTS  
STA 37+80 - 41+56 LT  
STA 42+30 - 44+70 LT
- 620.50 REMOVING AND RESETTING FENCE  
STA 41+56 LT (ORNAMENTAL WOOD PLANK)  
STA 41+81 LT (ORNAMENTAL WOOD PLANK)
- 620.55 REMOVAL OF EXISTING FENCE  
STA 37+80 - 41+57 LT (IN-USE WOVEN WIRE W/WOOD POSTS)  
STA 41+52 LT (IN-USE WOOD PLANK W/ELECTRIC WIRE)  
STA 42+13 - 44+68 LT (IN-USE WOVEN WIRE W/WOOD POSTS)  
STA 44+77 - 48+88 RT (ABANDONED BARBED WIRE)
- 621.206 STEEL BEAM GUARDRAIL, GALVANIZED/NESTED  
STA 44+12 - 44+26 RT  
STA 44+75 - 44+87 LT  
STA 45+08 - 45+20 RT
- 621.20 STEEL BEAM GUARDRAIL, GALVANIZED  
STA 38+46 - 40+78 LT  
STA 42+58 - 44+75 LT  
STA 44+29 M.SPRUCE RT

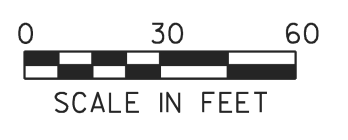
- 621.50 MANUFACTURED TERMINAL SECTION, FLARED  
STA 40+78 - 41+17 LT  
STA 42+18 - 42+58 LT
- 621.60 ANCHOR FOR STEEL BEAM RAIL  
STA 44+26 RT  
STA 44+75 LT  
STA 45+08 RT
- 621.80 REMOVAL AND DISPOSAL OF GUARDRAIL  
STA 44+22 - 44+85 RT  
STA 44+41 - 44+76 LT
- 621.81 REMOVAL AND DISPOSAL OF GUIDE POSTS  
STA 40+49 LT  
STA 41+95 LT  
STA 42+80 RT
- 900.680 SPECIAL PROVISION (HAND-PLACED BITUMINOUS CONCRETE, DRIVES)  
STA 41+69 LT  
STA 43+04 RT  
STA 43+93 RT  
STA 45+20 LT  
STA 47+75 LT



REMOVE & REPLACE PROPERTY MARKERS	
EXISTING	PROPOSED
IP 43+63.80 48.10'RT	IP 43+63.86 50.42'RT
IP 46+63.53 48.10'RT	IP 46+63.42 52.86'RT

- |  |  |  |  |   |  |
|--|--|--|--|---|--|
| 13 STA 43+77 - 44+08 RT<br>REMOVE 12" CGMP                                       | 12 STA 40+33 BR #141<br>REMOVE 30" RCP W/CRM AND HEADWALL<br>NEW 60" X 73' PIPE OPTION, WWS AND<br>STONE FILL TYPE III AT INLET & OUTLET<br>SEE BRIDGE DETAIL SHEETS | U9 STA 32+50 - 40+25 LT<br>NEW 8" X 775' UNDERDRAIN<br>W/FLUSHING BASIN AT 32+50 LT  | U13 STA 42+25 - 44+00 LT<br>NEW 8" X 175' UNDERDRAIN<br>W/FLUSHING BASIN AT 42+25 LT | C5 STA 39+95 - 40+23 RT<br>NEW 8" X 42' UD CARRIER PIPE | C9 STA 44+00 - 44+06 LT<br>NEW 8" X 18' UD CARRIER PIPE  |
| 14 STA 45+55 CL<br>REMOVE EXISTING 5' X 5' CONCRETE<br>BOX CULVERT AND WINGWALLS | 13 STA 43+75 - 44+17 RT<br>NEW 18" X 42' PIPE OPTION   | U1 STA 40+85 - 41+50 RT<br>NEW 8" X 65' UNDERDRAIN<br>W/FLUSHING BASIN AT 41+50 RT   | U14 STA 44+75 - 51+50 RT<br>NEW 8" X 675' UNDERDRAIN<br>W/FLUSHING BASIN AT 51+50 RT | C6 STA 40+25 LT<br>NEW 8" X 26' UD CARRIER PIPE         | C10 STA 44+25 - 44+50 LT<br>NEW 8" X 32' UD CARRIER PIPE |
| 15 STA 47+77 CL<br>REMOVE 18" RCP AND DI   | 14 STA 44+27 CL<br>NEW 7' X 10' X 60' PRE-CAST BOX CULVERT<br>W/WALLS & HEADWALLS. (SEE BRIDGE<br>DETAIL SHEETS.)  | U12 STA 41+50 - 44+00 RT<br>NEW 8" X 250' UNDERDRAIN<br>W/FLUSHING BASIN AT 41+50 RT | U15 STA 44+50 - 51+50 LT<br>NEW 8" X 700' UNDERDRAIN<br>W/FLUSHING BASIN AT 51+50 LT | C7 STA 40+56 - 40+85 RT<br>NEW 8" X 36' UD CARRIER PIPE | C11 STA 44+25 - 44+75 RT<br>NEW 8" X 38' UD CARRIER PIPE |
|  | 15 STA 44+74 - 45+35 LT<br>NEW 24" X 63' PIPE OPTION<br>NEW PRCCB W/TYPE B GRATE   |  |  | C8 STA 44+00 - 44+25 RT<br>NEW 8" X 30' UD CARRIER PIPE |  |
|  | 16 STA 45+37 - 47+64 LT<br>NEW 18" X 227' PIPE OPTION<br>NEW PRCCB W/TYPE B GRATE  |  |  |   |  |
|  | 17 STA 47+66 - 49+99 LT<br>NEW 18" X 232' PIPE OPTION<br>NEW PRCCB W/TYPE B GRATE  |  |  |   |  |

THIS PROJECT SUBJECT TO STORMWATER PERMIT 3438-INDS



**FOR R.O.W. USE ONLY**

LINES SHOWN ON THIS PLAN AS EXISTING PROPERTY LINES P/L ARE BELIEVED TO BE ACCURATE BUT SHOULD NOT BE RELIED UPON FOR PURPOSES UNRELATED TO THE STATE OF VERMONT'S ACQUISITION OF LAND AND RIGHTS FOR THIS PROJECT.

PROJECT NAME: CHARLOTTE  
PROJECT NUMBER: F EGC 019-4(20)  
FILE NAME: r78d062\_lay05.dgn  
PROJECT LEADER: K. UPMAL  
DESIGNED BY: B. KIPP  
ROW LAYOUT SHEET 5 OF 20  
PLOT DATE: 25-OCT-2013  
DRAWN BY: E. PIERCE  
CHECKED BY: E. PIERCE  
SHEET 19 OF 132