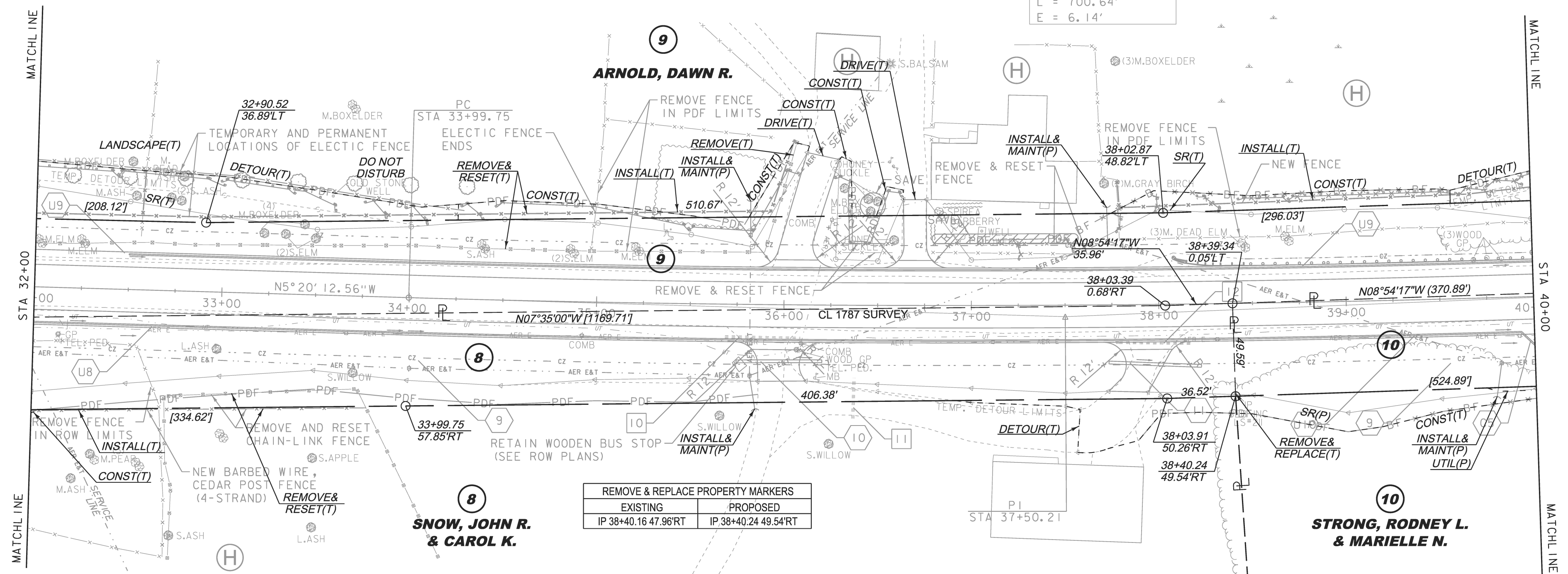


CONSTRUCT GRAVEL DRIVES		
LOCATION/TYPE	RADII STA/OFFSET	APPROX. WIDTH
STA 35+95 RT/(R)	STA 35+74.26/32.00 FT STA 36+16.97/32.00 FT	19 FT
STA 36+00 LT/(R)	STA 35+85.11/32.00 FT STA 36+27.16/32.00 FT	15 FT
STA 36+70 LT/(R)	STA 36+51.94/32.00 FT STA 36+88.05/32.00 FT	12 FT
STA 38+10 RT/(R)	STA 37+70.40/32.00 FT STA 38+16.00/32.00 FT	16 FT

617.10 RELOCATE MAILBOX, SINGLE SUPPORT  
 STA 36+17 RT  
 620.26 WOVEN WIRE FENCE WITH WOOD POSTS  
 STA 34+96 - 36+06 LT  
 STA 37+80 - 41+56 LT  
 620.50 REMOVING AND RESETTING FENCE  
 STA 26+39 - 34+97 LT (IN-USE ELECTRIC W/METAL POSTS)  
 STA 32+71 - 33+73 RT (CHAIN-LINK)  
 STA 36+21 - 36+58 LT (ORNAMENTAL WOOD PLANK)  
 STA 36+79 - 37+68 LT (ORNAMENTAL WOOD PLANK)  
 620.55 REMOVAL OF EXISTING FENCE  
 STA 26+39 - 35+89 LT (WOVEN & BARBED WIRE W/WOOD POSTS)  
 STA 35+89 - 36+06 LT (IN-USE WOOD PLANK)  
 STA 34+97 - 35+92 LT (WOVEN WIRE FENCE W/WOOD POSTS)  
 STA 30+51 - 32+68 RT (ABANDONED BARBED WIRE)  
 STA 37+80 - 41+57 LT (IN-USE WOVEN WIRE W/WOOD POSTS)  
 621.20 STEEL BEAM GUARDRAIL, GALVANIZED  
 STA 38+46 - 40+78 LT  
 621.50 MANUFACTURED TERMINAL SECTION, FLARED  
 STA 38+07 - 38+46 LT

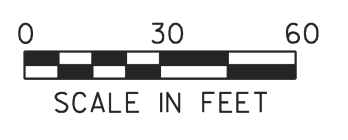
621.81 REMOVAL AND DISPOSAL OF GUIDE POSTS  
 STA 32+13 RT  
 STA 36+07 RT  
 STA 39+68 LT  
 STA 39+76 LT  
 STA 39+83 LT  
 900.680 SPECIAL PROVISION (HAND-PLACED BITUMINOUS CONCRETE, DRIVES)  
 STA 35+95 RT  
 STA 36+00 LT  
 STA 36+70 LT  
 STA 38+10 RT

CURVE #4 DATA	
DELTA	= 4° 00' 52"
D	= 0° 34' 23"
R	= 10000.00'
T	= 350.46'
L	= 700.64'
E	= 6.14'



EXISTING DRAINAGE		NEW DRAINAGE	
10	STA 35+69 - 36+09 RT REMOVE EXISTING 15" CCMP	9	STA 34+25 - 40+10 RT CONSTRUCT GRASS LINED TREATMENT SWALE SEE TYPICAL SECTIONS
11	STA 36+39 RT RETAIN EXISTING 15" CCMP	10	STA 35+75 - 36+20 RT NEW 18" X 45" PIPE OPTION
12	STA 37+76 - 38+39 RT REMOVE EXISTING 12" CCMP	11	STA 37+69 - 38+22 RT NEW 18" X 50" PIPE OPTION

THIS PROJECT SUBJECT TO STORMWATER PERMIT 3438-INDS



LINES SHOWN ON THIS PLAN AS EXISTING PROPERTY LINES P/L ARE BELIEVED TO BE ACCURATE BUT SHOULD NOT BE RELIED UPON FOR PURPOSES UNRELATED TO THE STATE OF VERMONT'S ACQUISITION OF LAND AND RIGHTS FOR THIS PROJECT.

PROJECT NAME:	CHARLOTTE
PROJECT NUMBER:	F EGC 019-4(20)
FILE NAME:	r78d062_lay04.dgn
PROJECT LEADER:	K. UPMAL
DESIGNED BY:	B. KIPP
ROW LAYOUT SHEET	4 OF 20
PLOT DATE:	25-OCT-2013
DRAWN BY:	E. PIERCE
CHECKED BY:	E. PIERCE
SHEET	18 OF 132

**FOR R.O.W. USE ONLY**