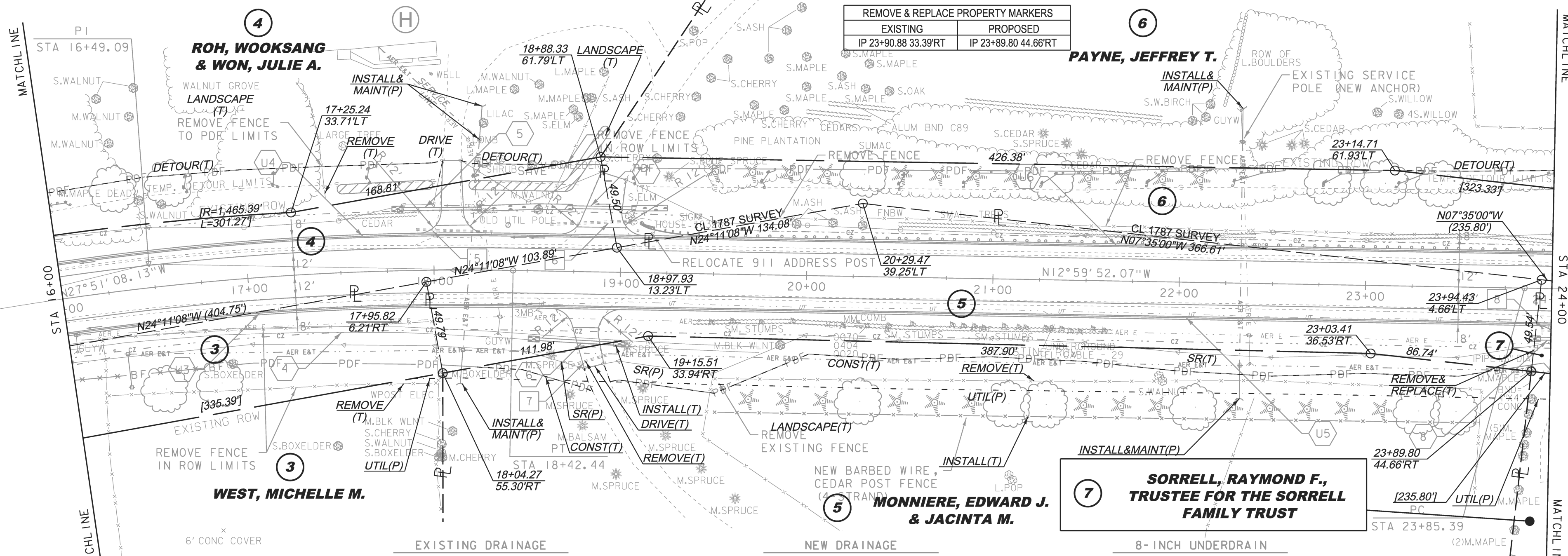
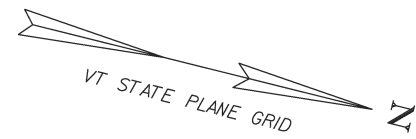


CONSTRUCT GRAVEL DRIVES		
LOCATION/TYPE	RADIUS STA/OFFSET	APPROX. WIDTH
STA 18+10 LT/(R)	STA 17+92.33/32.00 FT STA 18+27.58/32.00 FT	12 FT
STA 18+75 RT/(R)	STA 18+63.07/32.00 FT STA 19+00.67/32.00 FT	12 FT
STA 18+82 LT/(R)	STA 18+67.28/32.00 FT STA 19+12.38/32.00 FT	14 FT

- RELOCATE MAILBOX, MULTIPLE SUPPORT**  
STA 18+56 RT (3)
- REMOVAL OF EXISTING FENCE**  
STA 17+41 - 17+44 LT (ORNAMENTAL 2 FT PICKET FENCE)  
STA 16+13 - 16+18 RT (ABANDONED WOOD POST & RAIL)  
STA 16+16 - 18+03 RT (ABANDONED WOOD POST & ELECTRIC TAPE)  
STA 17+74 - 18+04 RT (ABANDONED WOOD POST & ELECTRIC TAPE)  
STA 18+59 - 18+79 LT (ORNAMENTAL WOOD SNAKE RAIL)  
STA 19+45 - 23+63 RT (IN-USE BARBED WIRE)  
STA 19+67 - 20+15 LT (ABANDONED BARBED WIRE)  
STA 20+27 - 23+62 LT (ABANDONED BARBED WIRE)  
STA 22+38 - 22+42 RT (ABANDONED BARBED WIRE)
- STEEL BEAM GUARDRAIL, GALVANIZED**  
STA 19+48 - 24+00 LT
- MANUFACTURED TERMINAL SECTION, FLARED**  
STA 19+10 - 19+48 LT

- SPECIAL PROVISION (HAND-PLACED BITUMINOUS CONCRETE, DRIVES)**  
STA 18+10 LT  
STA 18+75 RT (10 FT APRON)  
STA 18+82 LT
- SPECIAL PROVISION (BARBED WIRE FENCE, CEDAR POST 4-STRAND)**  
STA 19+50 - 23+62 RT



6' CONC COVER

CURVE #2 DATA	
DELTA	= 14° 51' 16" RT
D	= 3° 49' 11"
R	= 1500.00'
T	= 195.54'
L	= 388.89'
E	= 12.69'
BANK	= 0.062

- EXISTING DRAINAGE**
- 5 STA 17+91 - 18+32 LT REMOVE EXISTING 12" CPEP AND (2) HDW
  - 6 STA 18+62 - 19+03 LT REMOVE EXISTING 15" CPEP
  - 7 STA 18+75 - 18+93 RT REMOVE 15" CGMP
  - 8 STA 23+95 - 24+00 RT REMOVE 15" CGMP AND (2) HDW

- NEW DRAINAGE**
- 4 STA 16+00 - 19+75 RT CONSTRUCT GRASS LINED TREATMENT SWALE SEE TYPICAL SECTIONS
  - 5 STA 17+84 - 18+23 LT NEW 18" X 40' PIPE OPTION STONE PAD AT INLET & OUTLET
  - 6 STA 18+57 - 18+97 RT NEW 18" X 40' PIPE OPTION
  - 7 STA 18+74 - 19+06 LT NEW 18" X 32' PIPE OPTION W/STONE PAD AT INLET & OUTLET
  - 8 STA 23+94 - 24+00 RT NEW 18" X 30' PIPE OPTION W/STONE PAD AT INLET & OUTLET

- 8-INCH UNDERDRAIN**
- U3 STA 16+00 - 18+50 RT NEW 8" X 570' UNDERDRAIN W/FLUSHING BASIN AT 18+50 RT
  - U4 STA 16+00 - 18+50 LT NEW 8" X 570' UNDERDRAIN W/FLUSHING BASIN AT 18+50 LT
  - U5 STA 18+50 - 24+00 RT NEW 8" X 650' UNDERDRAIN W/FLUSHING BASIN AT 25+00 RT
  - U6 STA 18+50 - 24+00 LT NEW 8" X 650' UNDERDRAIN W/FLUSHING BASIN AT 25+00 LT

THIS PROJECT SUBJECT TO STORMWATER PERMIT 3438-INDS



LINES SHOWN ON THIS PLAN AS EXISTING PROPERTY LINES P/L ARE BELIEVED TO BE ACCURATE BUT SHOULD NOT BE RELIED UPON FOR PURPOSES UNRELATED TO THE STATE OF VERMONT'S ACQUISITION OF LAND AND RIGHTS FOR THIS PROJECT.

<b>FOR R.O.W. USE ONLY</b>	
PROJECT NAME:	CHARLOTTE
PROJECT NUMBER:	F EGC 019-4(20)
FILE NAME:	r78d062_lay02.dgn
PROJECT LEADER:	K. UPMAL
DESIGNED BY:	B. KIPP
ROW LAYOUT SHEET 2 OF 20	
PLOT DATE:	04-AUG-2015
DRAWN BY:	E. PIERCE
CHECKED BY:	E. PIERCE
SHEET	16 OF 132