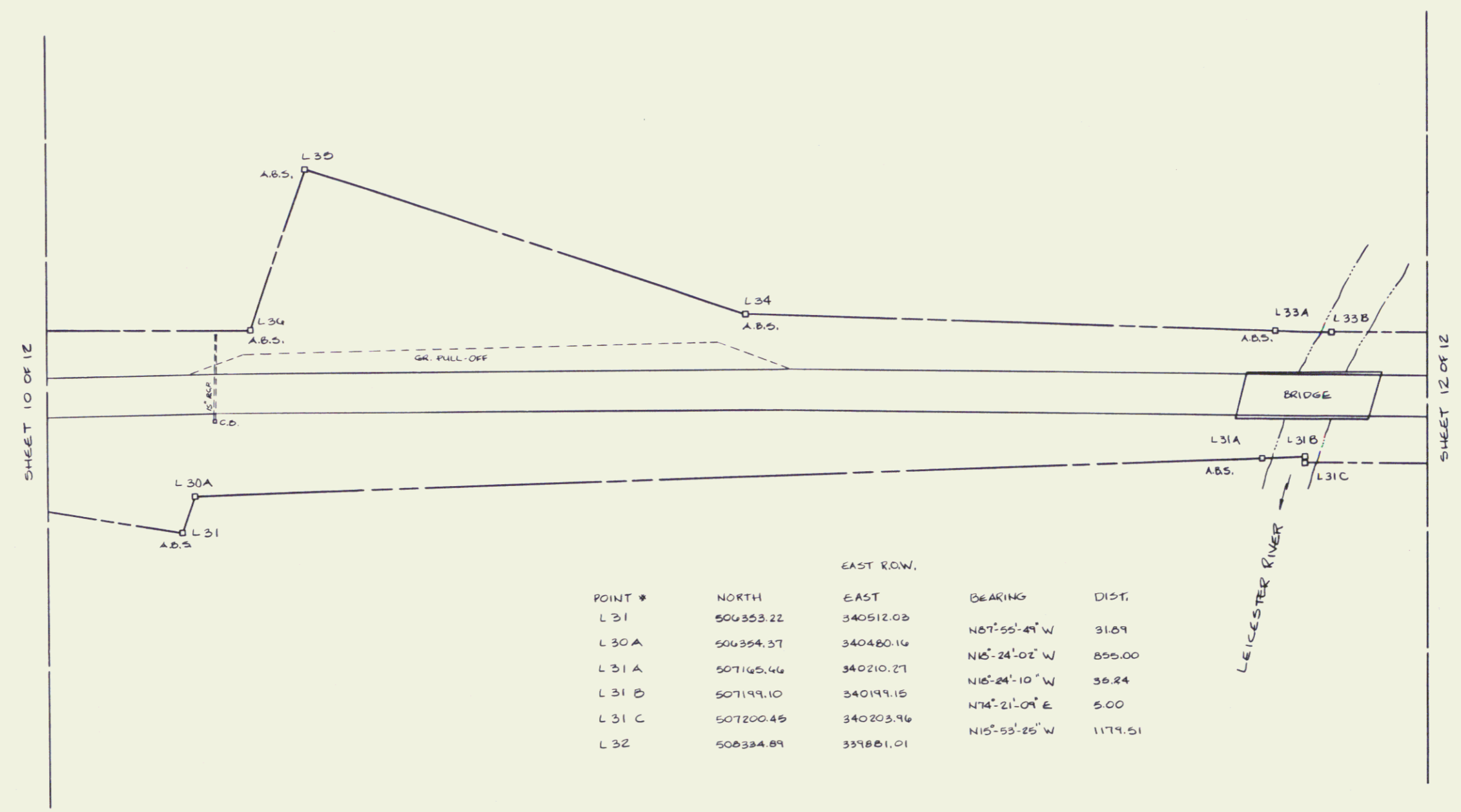
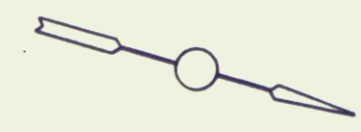
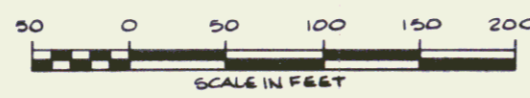


POINT #	NORTH	EAST	BEARING	DIST.
L 33	508305.22	339775.09	S16°-08'-27" E	1161.54
L 33 B	507189.46	340098.00	S14°-25'-42" E	43.11
L 33 A	507147.71	340108.74	S14°-25'-22" E	425.00
L 34	504736.11	340214.60	S02°-06'-17" W	371.90
L 35	506364.46	340200.74	S87°-55'-49" E	136.00
L 36	506309.50	340334.85		



POINT #	NORTH	EAST	BEARING	DIST.
L 31	506353.22	340512.03	N07°-55'-49" W	31.09
L 30 A	506354.37	340480.16	N15°-24'-02" W	855.00
L 31 A	507145.46	340210.27	N15°-24'-10" W	36.24
L 31 B	507199.10	340199.15	N74°-21'-09" E	5.00
L 31 C	507200.45	340203.96	N15°-55'-25" W	1179.51
L 32	508384.89	339881.01		

ALL BEARINGS ARE REFERENCED TO THE VERMONT STATE PLANE COORDINATE SYSTEM.



STATE OF VERMONT
 US ROUTE 7 RIGHT-OF-WAY
 LEICESTER FECC FOR-3 (29)
 VERMONT SURVEY CONSULTANTS, INC.
 58 EAST STATE ST.
 MONTPELIER, VT.

DATE: JULY 1989 SCALE: 1" = 50' SHEET: 11 OF 12

34