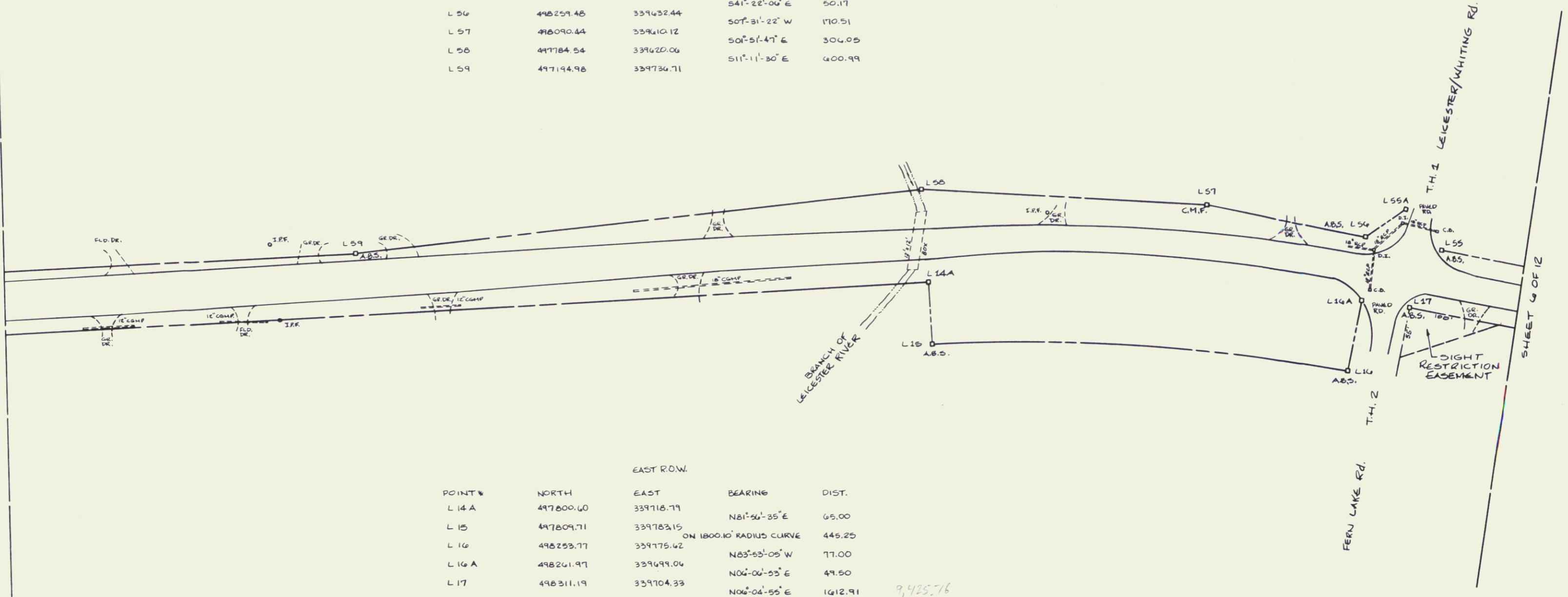


POINT #	NORTH	EAST	BEARING	DIST.
L 54 A	499489.69	339764.25	S06°12'49" W	1154.03
L 55	490342.64	339641.35	S42°52'42" W	61.82
L 55 A	498297.14	339599.28	S41°22'06" E	50.17
L 56	490259.48	339632.44	S07°31'22" W	170.51
L 57	498090.44	339610.12	S07°51'47" E	304.05
L 58	497784.54	339620.06	S11°11'30" E	400.99
L 59	497194.98	339736.71		

SHEET 4 OF 12

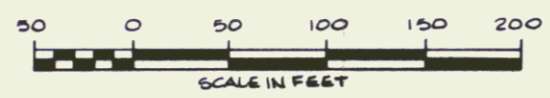
SHEET 6 OF 12



POINT #	NORTH	EAST	BEARING	DIST.
L 14 A	497800.60	339718.79	N81°56'35" E	65.00
L 15	497809.71	339783.15	ON 1800.10' RADIUS CURVE	445.25
L 16	498253.77	339775.62	N63°53'05" W	77.00
L 16 A	498261.97	339699.04	N04°06'55" E	49.50
L 17	498311.19	339704.33	N06°04'55" E	1612.91
L 18	499915.02	339875.22		

9,435.76

ALL BEARINGS ARE REFERENCED TO THE VERMONT STATE PLANE COORDINATE SYSTEM.



STATE OF VERMONT
 US ROUTE 7 RIGHT-OF-WAY
 LEICESTER FECC FOR 3 (29)
 VERMONT SURVEY CONSULTANTS, INC.
 58 EAST STATE ST.
 MONTPELIER, VT.

DATE: JULY 1989 SCALE: 1" = 50' SHEET: 5 OF 12

28