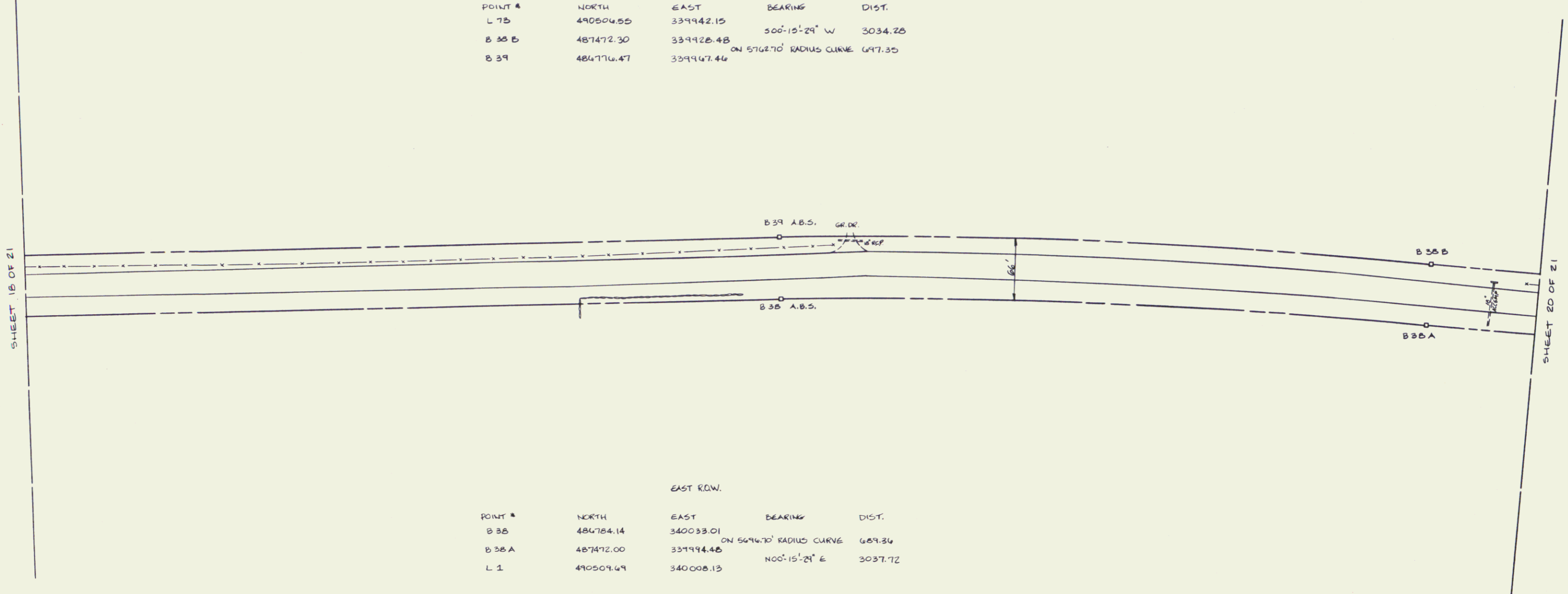
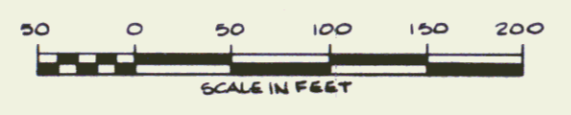


POINT #	WEST R.O.W.			
	NORTH	EAST	BEARING	DIST.
L 7B	490504.55	339942.15		
B 38 B	487472.30	339928.48	500°-15'-29" W	3034.28
B 39	486776.47	339947.46	ON 5762.70' RADIUS CURVE	697.35



POINT #	EAST R.O.W.			
	NORTH	EAST	BEARING	DIST.
B 38	486784.14	340033.01		
B 38 A	487472.00	339944.48	ON 5694.70' RADIUS CURVE	689.34
L 1	490509.49	340008.13	000°-15'-29" E	3037.72

ALL BEARINGS ARE REFERENCED TO THE VERMONT STATE PLANE COORDINATE SYSTEM.



STATE OF VERMONT U.S. ROUTE 7 RIGHT-OF-WAY BRANDON FEGC F 019-B (29)		
VERMONT SURVEY CONSULTANTS, INC. 58 EAST STATE ST. MONTPELIER, VT.		
DATE: JULY 1989	SCALE: 1" = 50'	SHEET: 19 OF 21