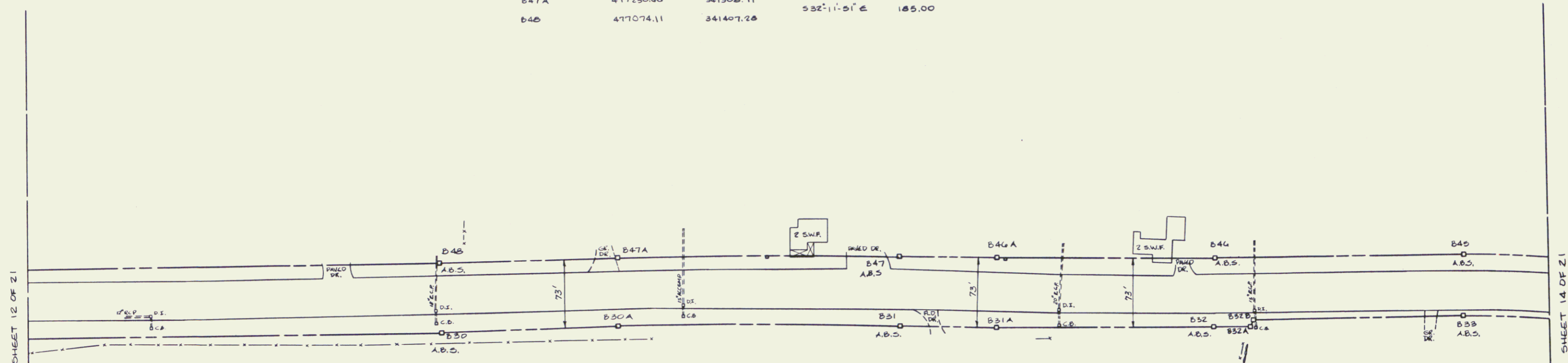
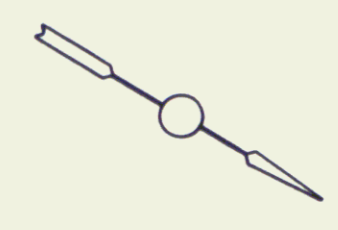
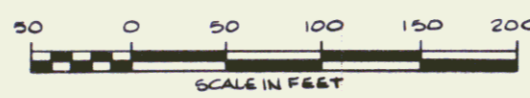


POINT #	NORTH	EAST	BEARING	DIST.
B44	478550.46	340674.40		
B45	478010.14	340846.00	ON 1178.92' RADIUS CURVE	572.53
B46	477778.72	340987.98	S31°31'51" E	271.50
B46 A	477578.57	341105.24	S30°21'51" E	231.97
B47	477490.09	341154.48	S29°11'51" E	101.36
B47 A	477230.66	341308.71	ON 5762.58' RADIUS CURVE	301.73
B48	477074.11	341407.28	S32°11'51" E	185.00



POINT #	NORTH	EAST	BEARING	DIST.
B30	477113.01	341469.05		
B30 A	477269.56	341370.48	ON 5689.58' RADIUS CURVE	297.91
B31	477525.70	341218.41	N29°11'51" W	101.36
B31 A	477614.18	341168.96	N30°21'51" W	234.94
B32	477814.70	341050.20	N31°31'51" W	38.35
B32 A	477849.59	341030.15	S74°24'53" W	7.28
B32 B	477847.63	341023.13	N31°31'51" W	231.15
B33	478044.65	340902.25	ON 1112.92' RADIUS CURVE	113.49
B33 A	478144.24	340847.93		



ALL BEARINGS ARE REFERENCED TO THE VERMONT STATE PLANE COORDINATE SYSTEM.

STATE OF VERMONT
 U.S. ROUTE 7 RIGHT-OF-WAY
 BRANDON FEGC F 019-5 (29)
 VERMONT SURVEY CONSULTANTS, INC.
 58 EAST STATE ST.
 MONTPELIER, VT.

DATE: JULY 1989 SCALE: 1" = 50' SHEET: 13 OF 21

14