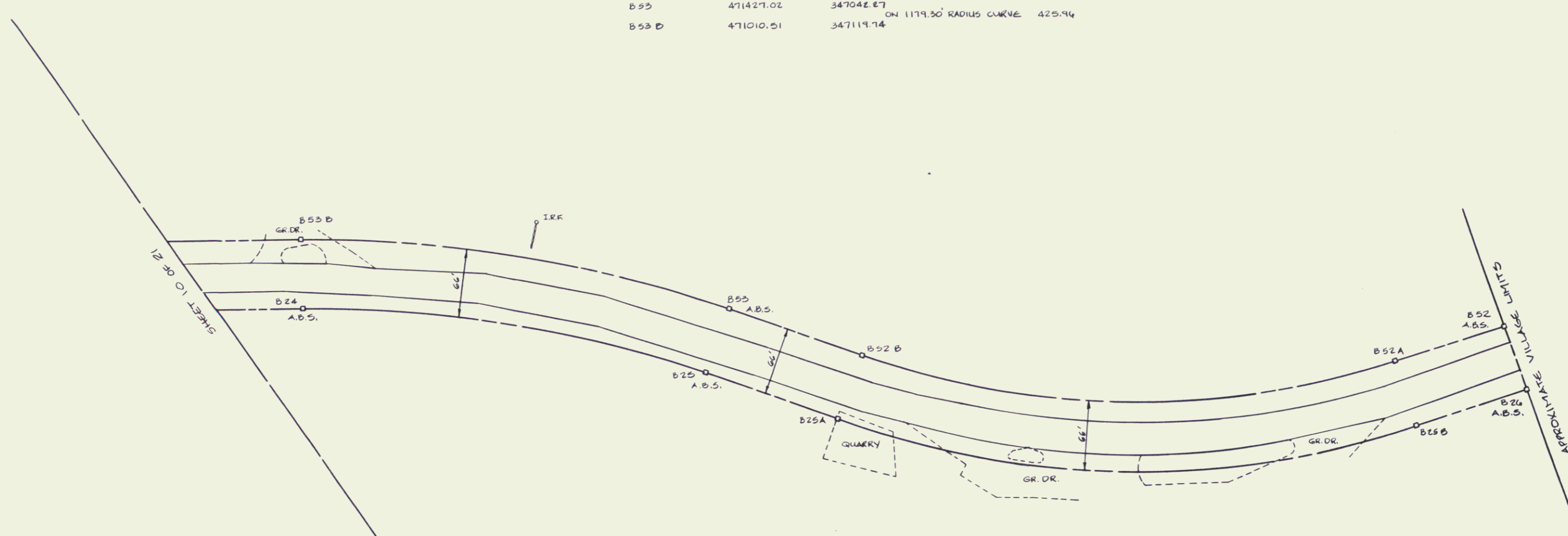
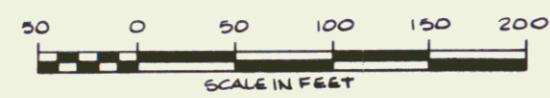


POINT #	NORTH	EAST	BEARING	DIST.
B 52	472143.94	346795.54	538°-50'-00" E	115.70
B 52 A	472053.84	346848.10	ON 784.00' RADIUS CURVE	530.19
B 52 B	471543.51	347041.83	500°-11'-00" E	134.50
B 53	471427.02	347042.87	ON 1179.30' RADIUS CURVE	425.94
B 53 B	471010.51	347119.74		



POINT #	NORTH	EAST	BEARING	DIST.
B 24	471034.04	347181.40	ON 1113.30' RADIUS CURVE	402.11
B 25	471427.23	347108.27	N00°-11'-00" W	134.50
B 25 A	471543.73	347107.83	ON 852.00' RADIUS CURVE	574.71
B 25 B	472093.33	346919.51	N38°-50'-00" W	115.70
B 24	472180.35	346846.98		

ALL BEARINGS ARE REFERENCED TO THE VERMONT STATE PLANE COORDINATE SYSTEM.



STATE OF VERMONT U.S. ROUTE 7 RIGHT-OF-WAY BRANDON FEGC F 019-5 (29)		
VERMONT SURVEY CONSULTANTS, INC. 58 EAST STATE ST. MONTPELIER, VT.		
DATE: JULY 1989	SCALE: 1" = 50'	SHEET: 11 OF 21