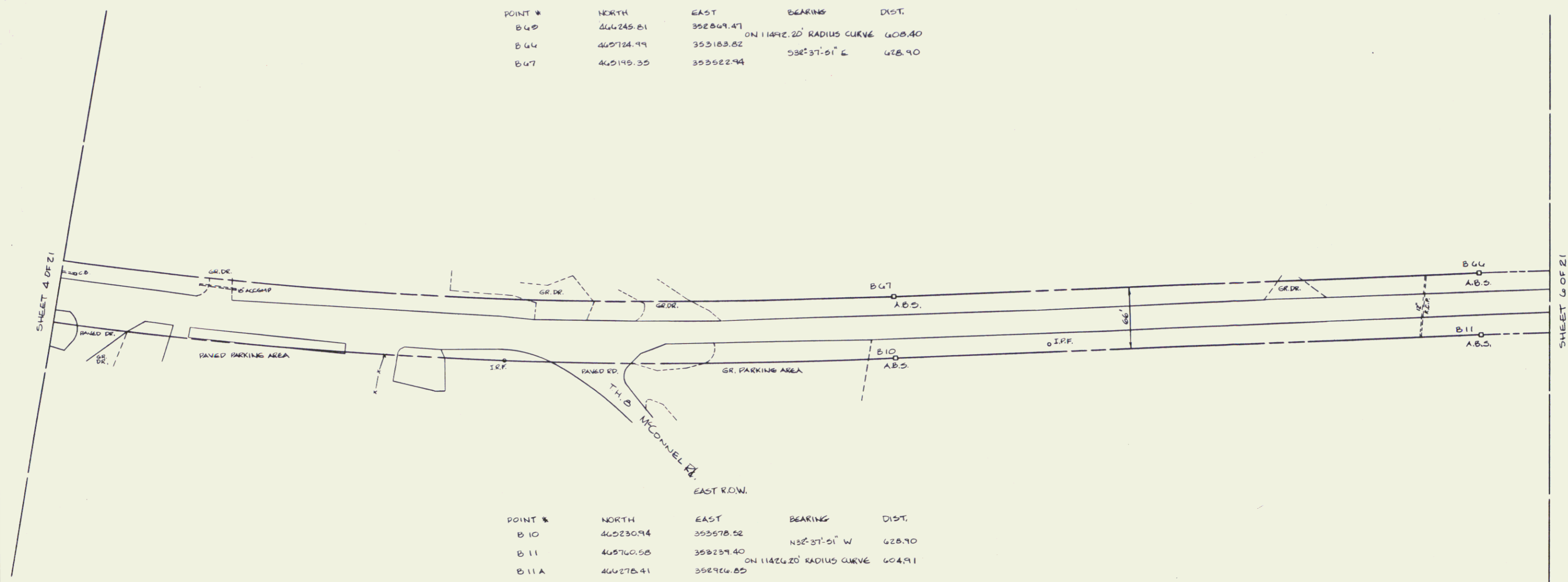


WEST R.O.W.

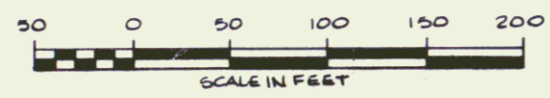
POINT #	NORTH	EAST	BEARING	DIST.
B 42	466245.81	352849.47	ON 11492.20' RADIUS CURVE	608.40
B 44	465724.79	353183.82	53E-37'-51" E	678.90
B 47	465195.35	353522.94		



EAST R.O.W.

POINT #	NORTH	EAST	BEARING	DIST.
B 10	462309.4	353578.82	N3E-37'-51" W	628.90
B 11	462760.58	352237.40	ON 11426.20' RADIUS CURVE	604.91
B 11A	46278.41	35276.85		

ALL BEARINGS ARE REFERENCED TO THE VERMONT STATE PLANE COORDINATE SYSTEM.



70' ROW

STATE OF VERMONT US ROUTE 7 RIGHT-OF-WAY BRANDON FEGC F 019-3 (29)		
VERMONT SURVEY CONSULTANTS, INC. 58 EAST STATE ST. MONTPELIER, VT.		
DATE: JULY 1989	SCALE: 1" = 50'	SHEET: 5 OF 21

6