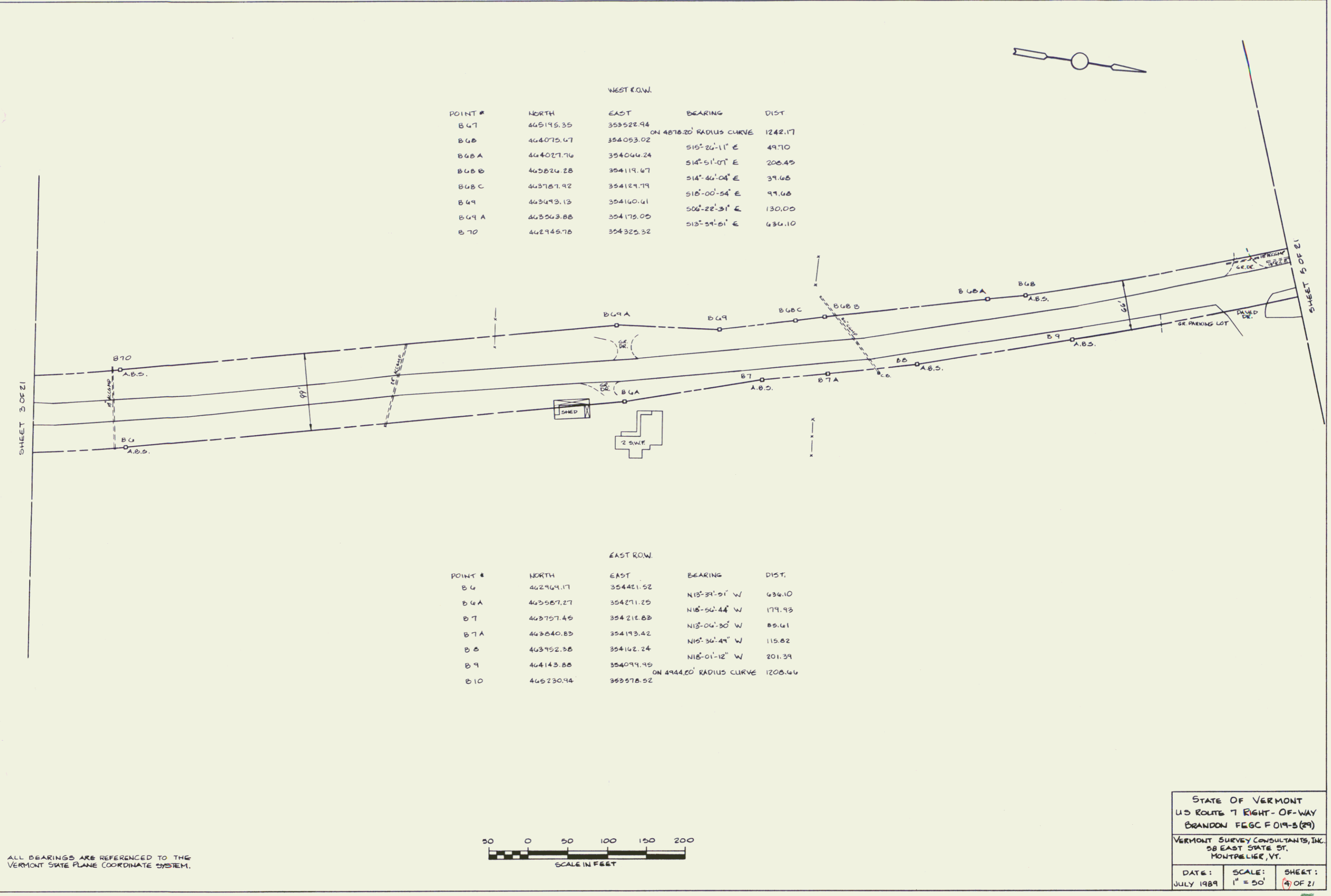


POINT #	NORTH	EAST	BEARING	DIST
B 47	445195.35	353522.94		
B 48	444075.47	354053.02	ON 4878.20' RADIUS CURVE	1242.17
B 48 A	444027.76	354044.24	S15°24'11" E	49.70
B 48 B	443824.28	354119.67	S14°51'07" E	206.45
B 48 C	443787.92	354129.79	S14°46'04" E	39.68
B 49	443493.13	354160.41	S15°00'54" E	99.68
B 49 A	443263.88	354175.05	S06°22'31" E	130.00
B 70	442946.78	354325.32	S13°37'51" E	436.10

POINT #	NORTH	EAST	BEARING	DIST.
B 4	442969.17	354421.52	N13°31'51" W	636.10
B 6 A	443557.27	354271.25	N18°50'44" W	179.93
B 7	443757.46	354212.88	N13°06'30" W	85.61
B 7 A	443840.83	354193.42	N15°36'49" W	115.82
B 8	443952.38	354162.24	N15°01'12" W	201.39
B 9	444143.88	354099.95	ON 4944.20' RADIUS CURVE	1208.66
B 10	445230.94	362578.52		



ALL BEARINGS ARE REFERENCED TO THE VERMONT STATE PLANE COORDINATE SYSTEM.

STATE OF VERMONT
 US ROUTE 7 RIGHT-OF-WAY
 BRANDON FEGG F 019-B (2)

VERMONT SURVEY CONSULTANTS, INC.
 58 EAST STATE ST.
 MONTPELIER, VT.

DATE: JULY 1989 SCALE: 1" = 50' SHEET: 4 OF 21

