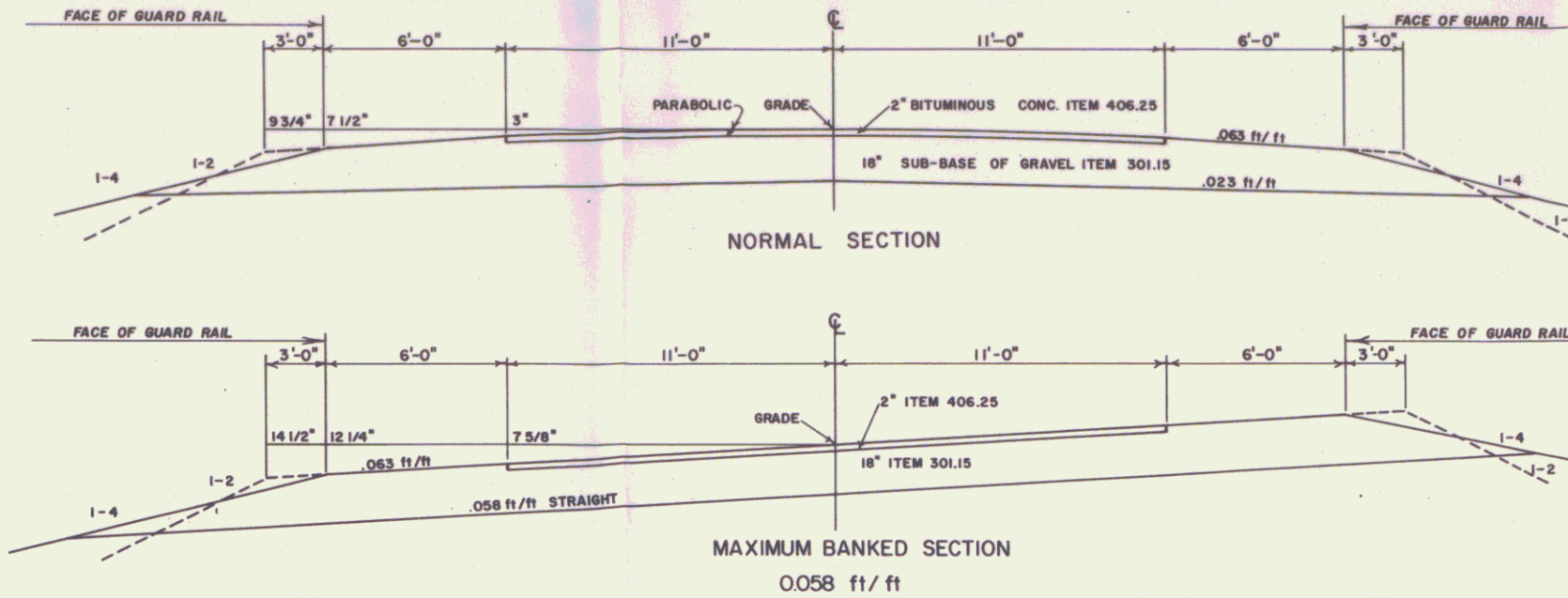


TYPICAL SECTIONS

2" BITUMINOUS CONCRETE PAVEMENT ITEM 406.15
18" SUB-BASE OF GRAVEL ITEM 301.15



SEED FORMULA

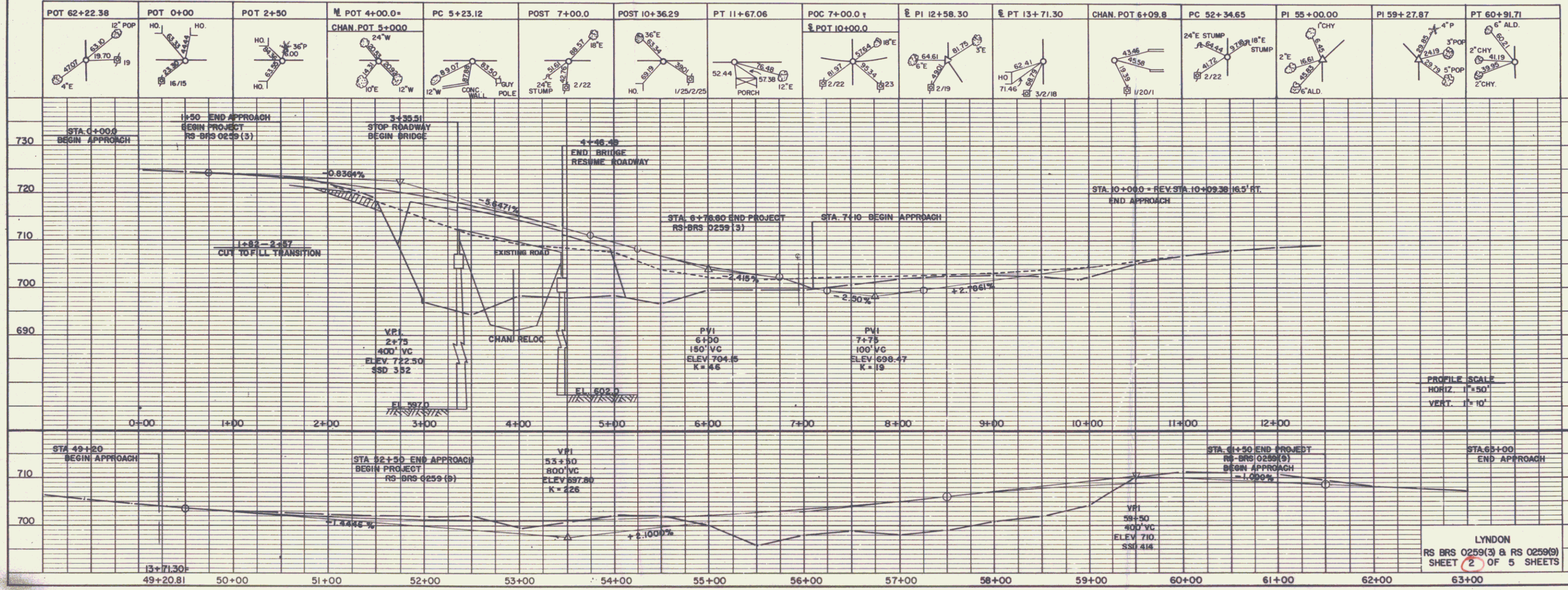
WT. %	LBS./A	NAME	PUR. %	GERM. %
3.33	2	CROWN VETCH	97	75
41.67	25	CREeping RED FESCUE	98	85
8.33	5	TIMOTHY	99	85
5.00	3	RED TOP	92	85
16.67	10	PERENNIAL RYE GRASS (VAR. PENNFIRE)	99	90
16.67	10	ALFALFA (VAR. SARANAC)	99	85
8.33	5	BIRDSFOOT TREFLOIL	98	85
100.00	60.0			

GENERAL NOTES

- THE SEED MIXTURE SHALL NOT HAVE A WEED CONTENT EXCEEDING 0.40% BY WEIGHT AND SHALL BE FREE FROM ALL NOXIOUS WEED SEED.
- MARKER POSTS, ITEM 619.16 TO BE PLACED AS DIRECTED BY THE ENGINEER.
- FERTILIZER, ITEM 651.15 FORMULA 10-20-10 TO BE APPLIED WITH SEED. ITEM 651.10 APPLIED AT THE RATE OF 500 LBS PER ACRE.
- AGRICULTURAL LIMESTONE, ITEM 651.20 TO BE APPLIED AT THE RATE OF 2 TONS PER ACRE OR AS DIRECTED BY THE ENGINEER.
- HAY MULCH, ITEM 651.25 TO BE PLACED ON EARTH SLOPES AT THE RATE OF 2 TONS PER ACRE.
- TOPSOIL, ITEM 653.10 TO BE USED WITH SEED, ITEM 651.10 IN RESIDENTIAL AREAS AS DIRECTED BY THE ENGINEER.
- SEE STANDARD SHEET B-5 FOR TYPICAL SLOPE ROUNDING.
- ALLOWABLE TOLERANCES
SUB-BASE +1"
BITUMINOUS CONCRETE PAVEMENT ±1/4"

PLAN
NOTE BOOK
No.

PROFILE
NOTE BOOK
No.



PROFILE SCALE
HORIZ. 1"=50'
VERT. 1"=10'

LYNDON
RS BRS 0259(3) & RS 0259(9)
SHEET 2 OF 5 SHEETS