

STEEL BEAM GUARD RAIL

4+69.5 LT	9+32 LT	4138.15	4138.15 LT
4+69.5 RT	9+32 RT	4138.15	4138.15 RT
12+07 LT	12+07 LT	12100.35	12100.35 LT
12+07 RT	12+07 RT	12100.35	12100.35 RT

HEAVY DUTY STEEL BEAM GUARD RAIL

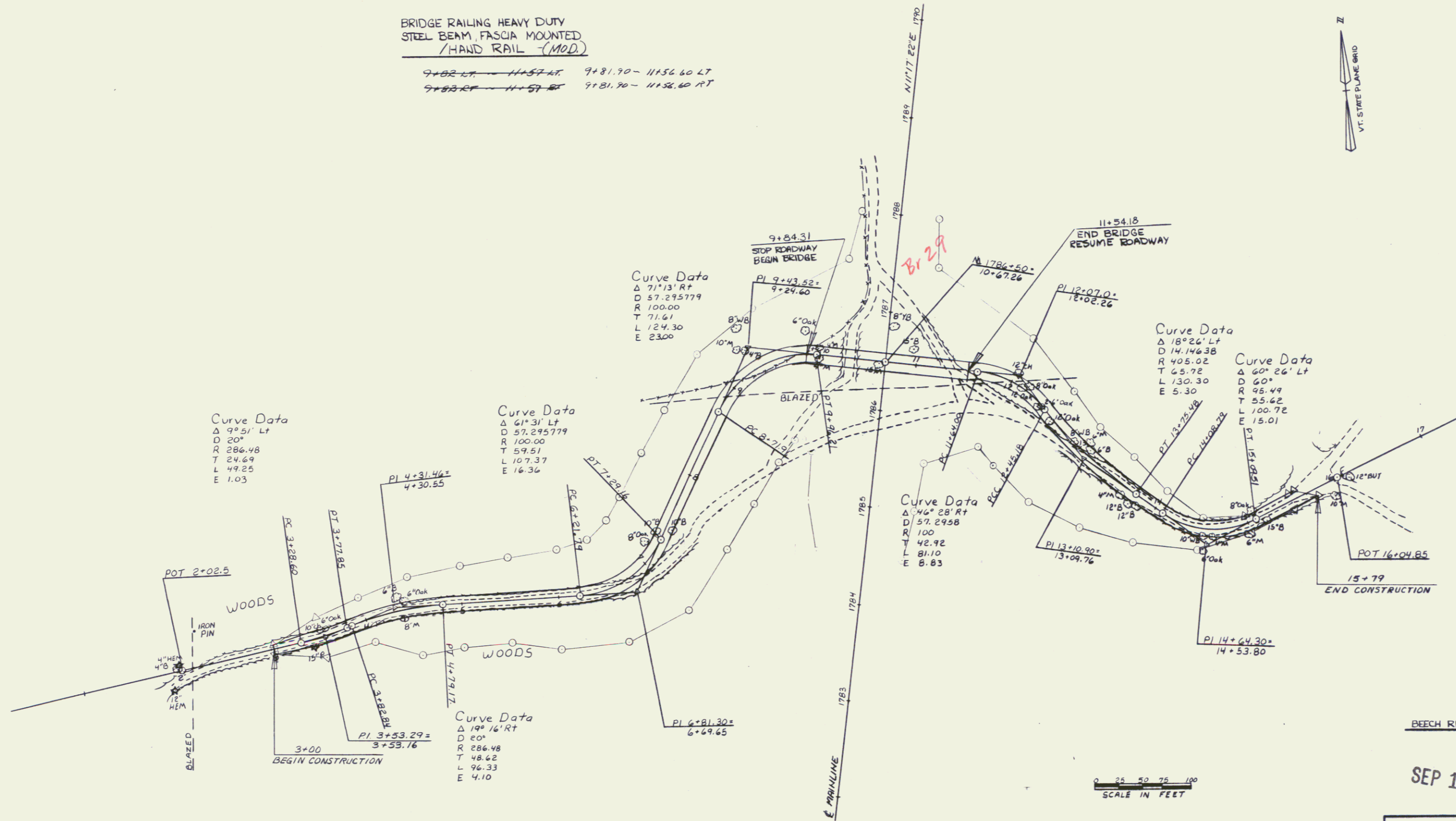
9+08 LT	9+57 LT	9138.15	9163.15 LT
9+32 RT	9+57 RT	9138.15	9163.15 RT
11+02 LT	12+07 LT	11175.35	12100.35 LT
11+02 RT	12+07 RT	11175.35	12100.35 RT

HEAVY DUTY STEEL BEAM GUARD RAIL (MOD)

9+69 LT	9+82 LT	9163.15	9163.15 LT
9+69 RT	9+82 RT	9163.15	9163.15 RT
11+54 LT	11+82 LT	11156.60	11175.35 LT
11+54 RT	11+82 RT	11156.60	11175.35 RT

BRIDGE RAILING HEAVY DUTY STEEL BEAM, FASCIA MOUNTED / HAND RAIL (MOD)

9+02 LT	11+57 LT	9181.70	11156.60 LT
9+02 RT	11+57 RT	9181.70	11156.60 RT



DATUM
 VERTICAL NGVD 1929
 HORIZONTAL NAD 1927

NOTE: NO CURVE SHALL BE BANKED

SEP 12 1994
 SURVEYED BY FANTONI DATE 4-82
 DRAWN BY SK JANAWICZ DATE 5-82
 TRACED BY SK JANAWICZ DATE 5-82
 MANCHESTER - DORSET
 PROJ. F NO 019-2 (14)
 SHEET 49 OF 411