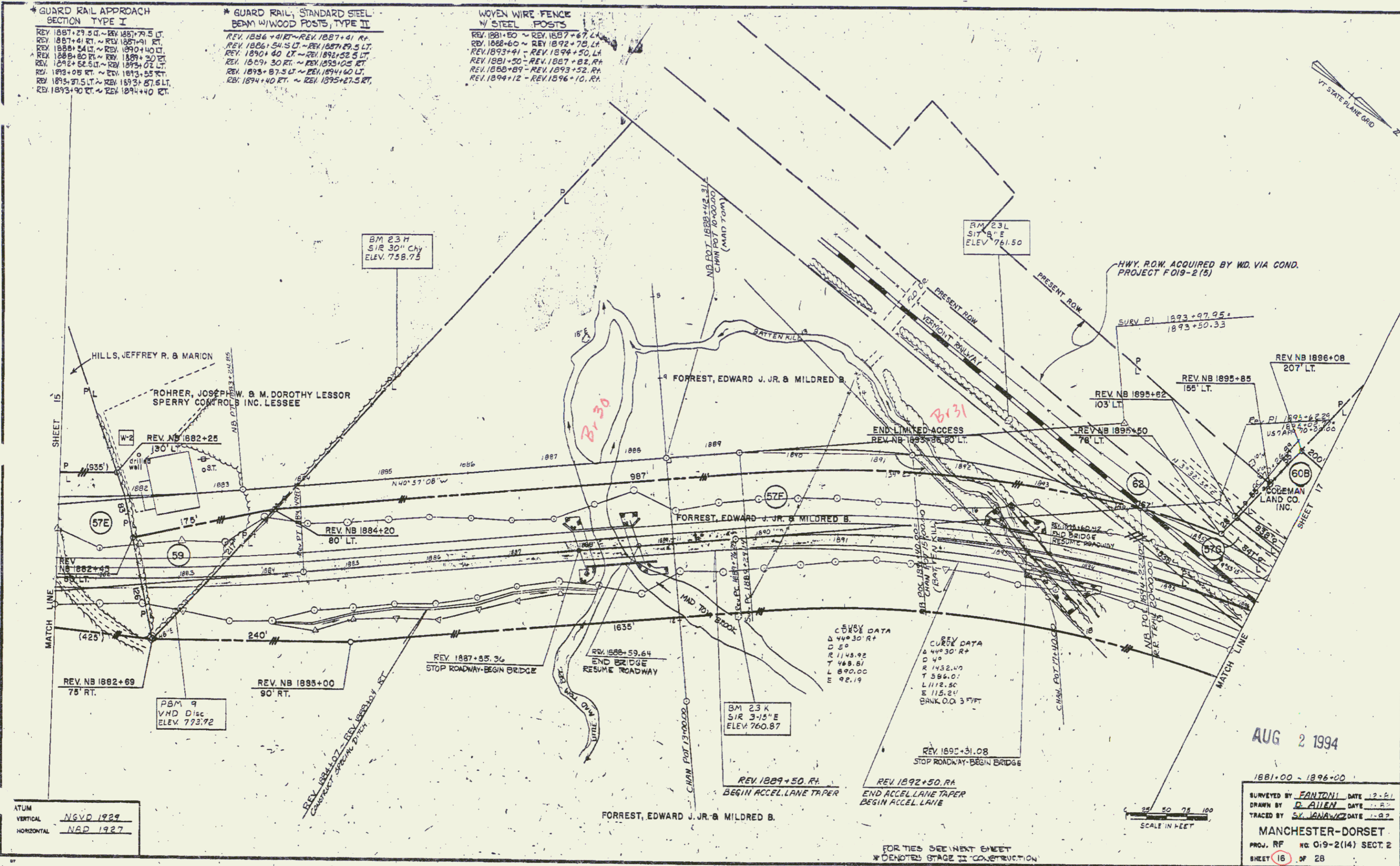


* GUARD RAIL APPROACH
 SECTION TYPE I
 REV. 1887+29.5 RT. ~ REV. 1887+79.5 LT.
 REV. 1887+41 RT. ~ REV. 1887+91 RT.
 REV. 1888+24 LT. ~ REV. 1890+40 LT.
 REV. 1888+80 RT. ~ REV. 1889+30 RT.
 REV. 1892+52.5 LT. ~ REV. 1893+02 LT.
 REV. 1893+08 RT. ~ REV. 1893+55 RT.
 REV. 1893+57.5 LT. ~ REV. 1893+87.5 LT.
 REV. 1893+90 RT. ~ REV. 1894+40 RT.

* GUARD RAIL, STANDARD STEEL
 BEAM W/ WOOD POSTS, TYPE II
 REV. 1896+41 RT. ~ REV. 1897+41 RT.
 REV. 1896+54.5 LT. ~ REV. 1897+54.5 LT.
 REV. 1897+40 LT. ~ REV. 1898+52.5 LT.
 REV. 1899+30 RT. ~ REV. 1899+102 LT.
 REV. 1899+87.5 LT. ~ REV. 1899+140 LT.
 REV. 1894+40 RT. ~ REV. 1895+27.5 RT.

WOVEN WIRE FENCE
 W/ STEEL POSTS
 REV. 1881+50 ~ REV. 1897+67 LT.
 REV. 1888+60 ~ REV. 1892+70 LT.
 REV. 1893+41 ~ REV. 1894+50 LT.
 REV. 1891+30 ~ REV. 1897+82 RT.
 REV. 1888+89 ~ REV. 1893+52 RT.
 REV. 1894+12 ~ REV. 1896+10 RT.



ATUM
 VERTICAL NAD 1927
 HORIZONTAL NAD 1927

CURVE DATA
 Δ 44° 30' RT
 D 50
 R 1145.92
 T 48.87
 L 890.00
 E 92.19
 BANK O.D. 3 FT

AUG 2 1994

1881+00 ~ 1896+00
 SURVEYED BY FANTONI DATE 12-51
 DRAWN BY D. ALLEN DATE 1-27
 TRACED BY SK. JANA/WK DATE 1-27
 MANCHESTER-DORSET
 PROJ. RF NO 019-2(14) SECT. 2
 SHEET 16 OF 28

FOR TIES SEE NEXT SHEET
 * DENOTES STAGE II CONSTRUCTION