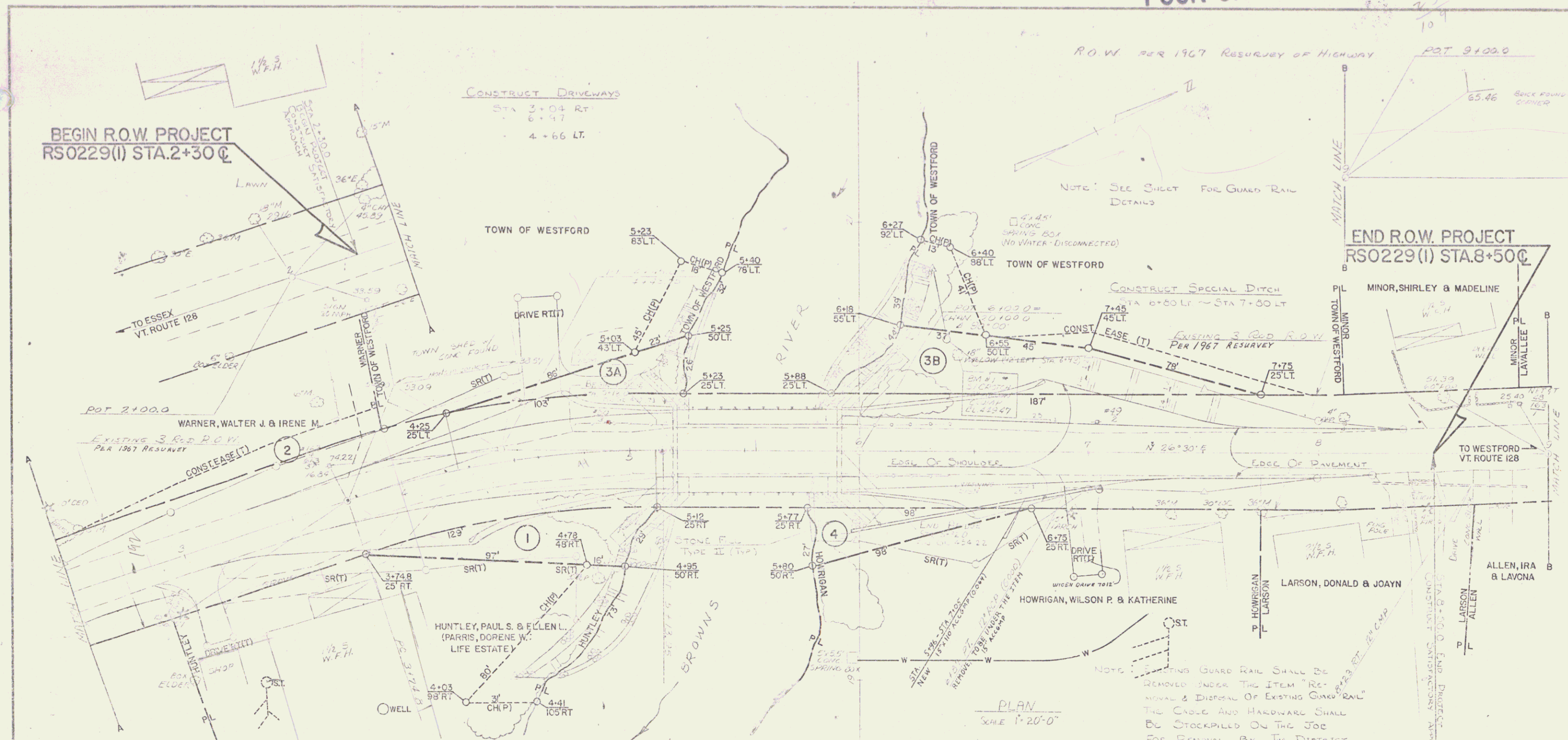


POOR ORIGINAL COPY

86
2/3
10



L 18'41.11'
D 15'27.47'
R 425.58
T 72.2
L 124.15
E 5.75

*NOTE: ELEVATION BASED ON U.S.G.S. TABLE 467 LOCATED 57 FEET EAST OF THE J.C. OF T.M. & P.M. S.A. 3 IN WESTFORD TOWN. 25' SOUTH OF THE E. OF S.A. 3. (GOOD CONDITION) ELEVATION = 467.07

BRIDGE DATA
30' CB 20' E 30" B&G 200 BEAMS
10' CLEAR SPAN
74' OVERALL LENGTH
20' ROADWAY
13' CLEAR HEIGHT
WATERWAY = 126.0"
BUILT IN 1930
CONCRETE DECK

DEC 21 1981

STATE OF VERMONT DEPARTMENT OF HIGHWAYS	
TOWN OF WESTFORD	Bridge No. 5
HIGHWAY NO. VT. ROUTE 128	Loc. Sta. 194+4.5
VERMONT HIGHWAYS DIST. BROWNS RIVER	
Designed by R.H.H.	Drawn by J.H.H.
Checked by	Bridge Design Supervisor
DATE: 1981 date 9-1-81	Date
PROJECT WESTFORD	PROJECT NO. RS-BUS-0229 (1)
Bridge Sheet No. 3	Sheet 4 of

3