

STONE FILL, TYPE II

GUARD RAIL, STD. STEEL BEAM  
W/ WOOD POSTS, TYPE II  
REV. 22+00 - 23+01 LT.

BREAKAWAY CABLE TERMINAL FOR GUARD RAIL,  
STD. ST. BEAM W/ WOOD POSTS, TYPE II  
REV. 23+01 - 23+26 LT.

REMOVAL & DISPOSAL OF  
EXISTING GUARD RAIL  
REV. 22+00 - 22+30 LT.  
REV. 22+00 - 23+29 RT.

Rev. Curve Data

Δ 25° 45' 56" Lt.  
R 2450.16'  
D 24' 20" 18"  
T 548.77'  
L 1079.72'  
E 60.7'  
2T-L 17.82'  
Banking 0.044 ft/ft

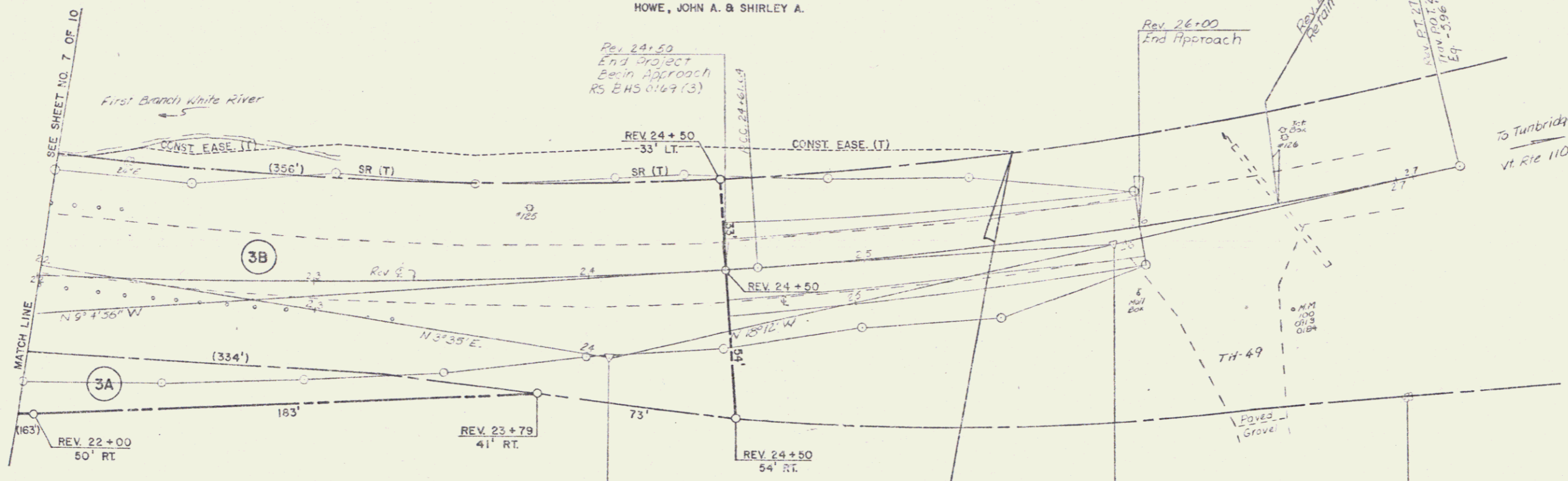
Rev. Curve Data

Δ 0° 51' 04" Lt.  
R 1637.02'  
D 3' 30"  
T 128.13'  
L 253.75'  
E 5.01'  
2T-L 0.52'  
Banking 0.058 ft/ft

HOWE, JOHN A. & SHIRLEY A.

REV. 24+50  
End Project  
Begin Approach  
RS BHS 0169 (3)

REV. 26+00  
End Approach



HOWE, JOHN A. & SHIRLEY A.

END R.O.W. PROJECT  
RS BHS 0169 (3) STA. REV. 25+60 33' LT.

DATUM  
VERTICAL M.S.L. 1929  
HORIZONTAL N/A

SURVEYED BY Enoch DATE 5-77  
DRAWN BY Enoch DATE 1-78  
TRACED BY Enoch DATE 1-78  
PROJ. TUNBRIDGE  
NO. RS BHS 0169 (3)  
SHEET 9 OF 10