

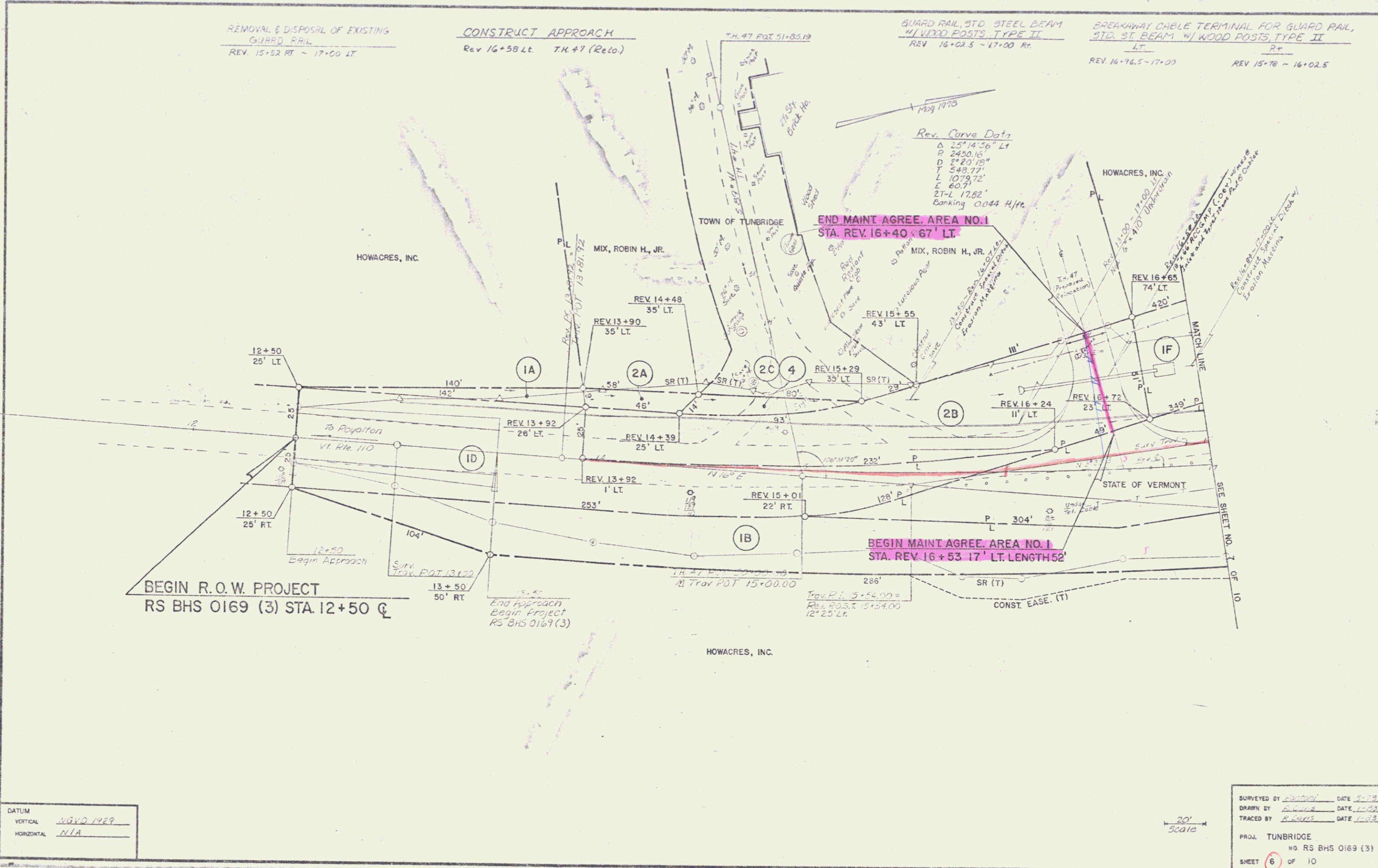
REMOVAL & DISPOSAL OF EXISTING
GUARD RAIL
REV. 15+52 RT - 17+00 LT

CONSTRUCT APPROACH
Rev 16+58 Lt. T.H.#7 (Reto)

GUARD RAIL, STD. STEEL BEAM
W/ WOOD POSTS, TYPE II
REV. 16+02.5 - 17+00 Rt.

BREAKAWAY CABLE TERMINAL FOR GUARD RAIL,
STD. ST. BEAM W/ WOOD POSTS, TYPE II
LT. REV. 16+76.5 - 17+00
RT. REV. 15+78 - 16+02.5

Rev. Curve Data
Δ 25°14'36" LT
P 2450.15
D 2°20'19"
T 548.77'
L 1079.72'
E 60.91'
T-L 17.82'
Banking 0.044 H/ft.



DATUM
VERTICAL NGVD 1929
HORIZONTAL N/A

SURVEYED BY AS/2001 DATE 5-98
DRAWN BY AL/2002 DATE 11-98
TRACED BY R/2003 DATE 11-98
PROJ. TUNBRIDGE
NO. RS BHS 0169 (3)
SHEET 6 OF 10