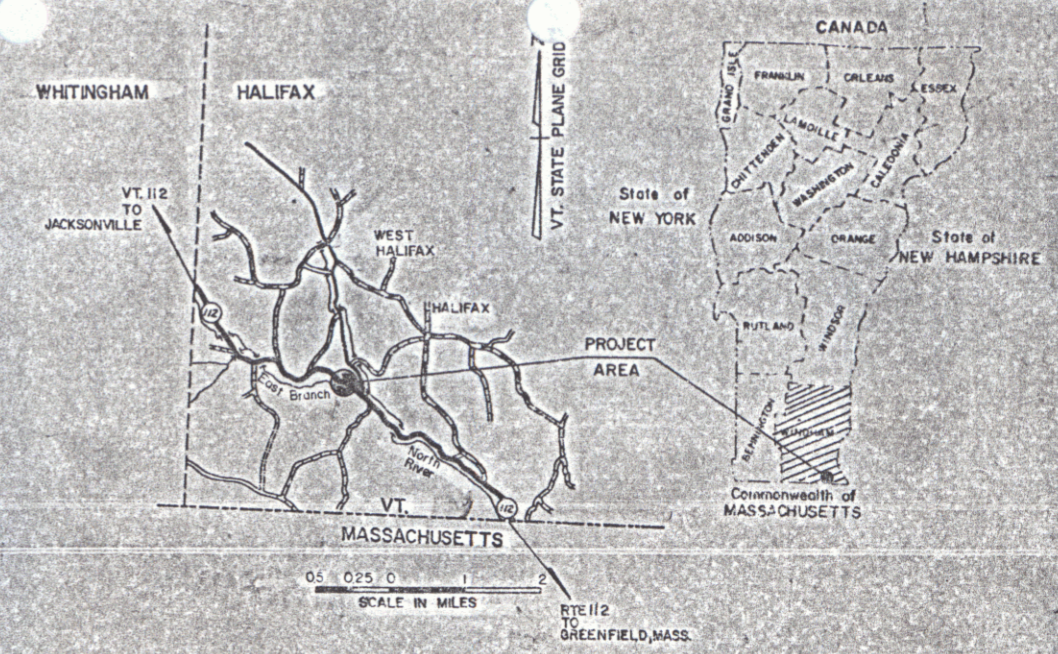


RESEARCH DRAWER SET

STATE OF VERMONT
AGENCY OF TRANSPORTATION



PROPOSED IMPROVEMENT
BR 5 (FORMERLY BR 12) - VT. RTE. 112 (F.A.P.)
TOWN OF HALIFAX
COUNTY OF WINDHAM



R.O.W. PLANS

BEGINNING AT A POINT APPROXIMATELY 2.672 MILES SOUTH-EASTERLY OF THE HALIFAX-WHITINGHAM TOWN LINE AND EXTENDING SOUTHEASTERLY 0.180 MILES.

LENGTH OF ROADWAY 867.16 FEET = 0.164 MILES
LENGTH OF BRIDGE 82.84 FEET = 0.016 MILES
LENGTH OF PROJECT 950.00 FEET = 0.180 MILES

WORK UNDER THIS PROJECT INCLUDES THE REPLACEMENT OF BRIDGE NO. 5 AND RECONSTRUCTION OF ROADWAY APPROACHES.

LENGTH OF R.O.W. PROJECT 641 FEET = 0.121 MILES

BEGIN R.O.W. PROJECT
F BHF 013-1(3)S REV. STA. 140+00 25' LT.

MP 3.178
141+00
BEGIN PROJECT
F-BHF 013-1(3)S
END APPROACH

145+38.58
STOP ROADWAY
BEGIN BRIDGE

146+21.42
END BRIDGE
RESUME ROADWAY

RIGHT-OF-WAY DIVISION
TOWN FILE
PERMANENT
Town of **VT 112**
MP 2.992
150+50
END PROJECT
F-BHF 013-1(3)S
BEGIN APPROACH
151+00
END APPROACH

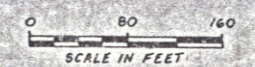
REV PT 151+11.51
SURV POST 151+05.86
EQ +1.65'

END R.O.W. PROJECT
F BHF 013-1(3)S REV. STA. 146+41 48' LT.

CONVENTIONAL SIGNS

COUNTY LINE	---
TOWN LINE	- - - -
LIMITS OF ACCESS	—o—o—o—
POINT OF ACCESS	—o—o—o— X
FENCE LINE	—x—x—x—
STONE WALL	—x—x—x—
TRAVELED WAY	—x—x—x—
GUARD RAIL	—x—x—x—
RAILROAD	—x—x—x—
SURVEY LINE	—x—x—x—
CULVERT	—x—x—x—
POWER POLE	—o—o—o—
TELEPHONE POLE	—o—o—o—
TREES	—o—o—o—
CONTROL OF ACCESS	—x—x—x—
PROPERTY LINE	—x—x—x—
R.O.W. TAKING LINE	—x—x—x—
SLOPE RIGHTS	—o—o—o—
TOP OF CUT	—o—o—o—
TOE OF SLOPE	—o—o—o—

DATUM
VERTICAL - NGVD 1929
HORIZONTAL - N/A



ALL DRIVES AS INDICATED ON PLANS ARE SUBJECT TO PERMITS PURSUANT TO TITLE 19, SECTION 43, V.S.A.

Pin# 77B018
APPROVED *[Signature]* DATE 4/15/87
Dir., Dept. of Planning & Preconstruction.
APPROVED *[Signature]* DATE 5/1/87
Chief, Property Administration

THESE PLANS ARE SUBJECT TO SUCH ENGINEERING CHANGES AS MAY BE REQUIRED BY THE FEDERAL HIGHWAY ADMINISTRATION OR THE CHIEF ENGINEER. CONSTRUCTION IS TO BE CARRIED ON IN ACCORDANCE WITH THESE PLANS AND THE STANDARD SPECIFICATIONS FOR CONSTRUCTION DATED 1986, AS APPROVED BY THE FEDERAL HIGHWAY ADMINISTRATION ON NOVEMBER 21, 1985 FOR USE ON THIS PROJECT, INCLUDING ALL SUBSEQUENT REVISIONS AND SUCH REVISED SPECIFICATIONS AND SPECIAL PROVISIONS AS ARE INCORPORATED IN THESE PLANS.

HALIFAX
F BHF 013-1(3)S
SHEET 1 OF 5

8/6/90 1

STATE OF VERMONT
AGENCY OF TRANSPORTATION
RIGHT OF WAY PLANS
DETAIL SHEET

PARCEL NO.	GRANTOR	SHEET NO.	BEGINNING STATION	ENDING STATION	TAKING	REM.	RIGHTS	TITLE TAKEN	DATE	TOWN OR CITY RECORDED	BK.	PG.	REMARKS	REVISION NO.	SHEET NO.	DESCRIPTION OF REVISION	DATE	MADE BY	APPROVED BY	
1A	GEHRICKE, EDWIN & VIOLET	5	REV. 140 + 00 LT. REV. 140 + 25 LT. REV. 141 + 75 LT.	REV. 142 + 23 LT. REV. 145 + 25 LT.	0.07 A±	5.03 A±	SLOPE (T) (200 S.F.±) DRIVE (T)	COND	7/28/88	HALIFAX	35	463-6	(3160 S.F.±) 16' GRAVEL MP 0315	1	4,5	PARCEL NO. 1 GEHRICKE. CHANGE RUNNING DISTANCE FROM 371' TO 271'. REDUCE AREA OF 1B TO 0.09 A±. CHANGE TOTAL AREA TO 0.61 A± PER C.O. NO. 6986	7-15-87	M.J.R.	<i>Lg 70</i>	
1B		5	REV. 140 + 00 RT. REV. 140 + 00 RT. REV. 141 + 73 RT. REV. 143 + 12 RT. REV. 147 + 71 RT. REV. 144 + 76 RT.	REV. 143 + 71 RT. REV. 145 + 50 RT. REV. 142 + 22 RT. REV. 145 + 42 RT. REV. 144 + 90 RT. REV. 145 + 28 RT.	0.09 A±	0.78 A±	CONST. EASE. (T) (260 S.F.±) CONST. EASE. (T) (0.06 A±) DIT. (P) (0.02 A±) CHANNEL (P) (0.02 A±)						(4090 S.F.±) (2800 S.F.±) (1025 S.F.±) (965 S.F.±)	2	4,5	<i>Myers To Design</i> PARCEL NO. 3 CALL #1 of ADDED SLOPE RT (P) & CONST. EASE (T) TO SLIDE AREA BY OPTION ONLY PER CO. 7382	7-08-87 9-13-88		<i>JSP</i>	
1C		5	REV. 140 + 00 RT.	REV. 145 + 73 LT.	0.45 A±		ALL R.T.&I.						HWY. EASE VT. RTE. 112							
				TOTAL	0.61 A±	5.81 A±														
2A	SABIA, DOMINIC W. & MARJORIE	5	REV. 142 + 23 LT. REV. 142 + 90 LT. REV. 143 + 08 LT. REV. 144 + 34 LT. REV. 144 + 47 LT. REV. 145 + 80 LT.	REV. 146 + 41 LT. REV. 144 + 58 LT. REV. 145 + 00 LT. REV. 146 + 85 LT. REV. 146 + 03 LT.	0.22 A±	4.42 A±	DRIVE (T) CONST. EASE. (T) (0.02 A±) SLOPE (T) (60 S.F.±) EASEMENT (T) (0.29 A±) CHANNEL (P) (200 S.F.±)	WD	11/25/87	HALIFAX	35	148-9	12' PAVED MP 0313 (1000 S.F.±) TEMP. BRIDGE & DETOUR							
2B		5	REV. 142 + 20 RT.	REV. 146 + 22 LT.	0.20 A±		ALL R.T.&I.						HWY. EASE. VT. RTE. 112							
				TOTAL	0.42 A±	4.42 A±														
3	CALL, WILLIAM J. MARGARET B. CALL, DOUGLAS C. & RONA C. CALL, FREDERICK R. & BARBARA E. WESTON, KENNETH G. & VIVIAN C.	5	REV. 145 + 50 RT. REV. 145 + 50 RT. REV. 145 + 76 RT.	REV. 146 + 03 RT. REV. 145 + 99 RT. REV. 145 + 94 RT.	0.03 A±		ALL R.T.&I. CONST. EASE. (T) (400 S.F.±) CHANNEL (P) (45 S.F.±)	COND	7/28/88	HALIFAX	38	463-6	HWY. EASE. VT. RTE. 112 (1220SF)							
3B		5	REV. 146 + 37 RT. REV. 146 + 62 RT.	REV. 149 + 69 RT. REV. 149 + 56 RT.			CONST. EASE. (T) (0.08 A±) SLOPE (P) (0.18 A±)						3800 SF.± BY OPTION ONLY							
4	VT. ELECTRIC CO-OP INC.												UTILITY							
5	NEW ENGLAND TELEPHONE CO.												UTILITY							

MADE BY: A.S.J. DATE 4/30/87
CHECKED BY: F.J.M. DATE 4/30/87

DR. RT. - DRAINAGE RIGHT
DIT. RT. - DITCHING RIGHT
CH. RT. - CHANNEL RT.
DRIVE RT. - DRIVE RIGHT
CUL. RT. - CULVERT RIGHT
(D) - DEMOLITION OR REMOVAL
(W) - WATER SOURCES

PRESENT R.O.W.
TAKING WITHOUT ACCESS

TAKING WITH ACCESS
PERMANENT EASEMENT
TEMPORARY EASEMENT

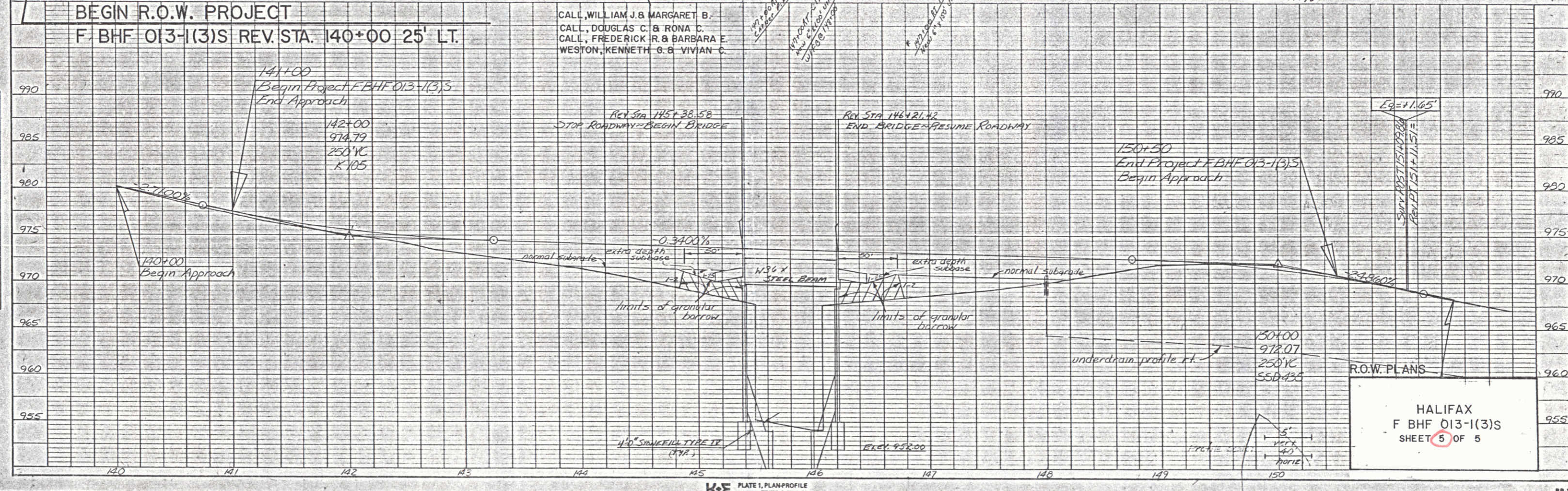
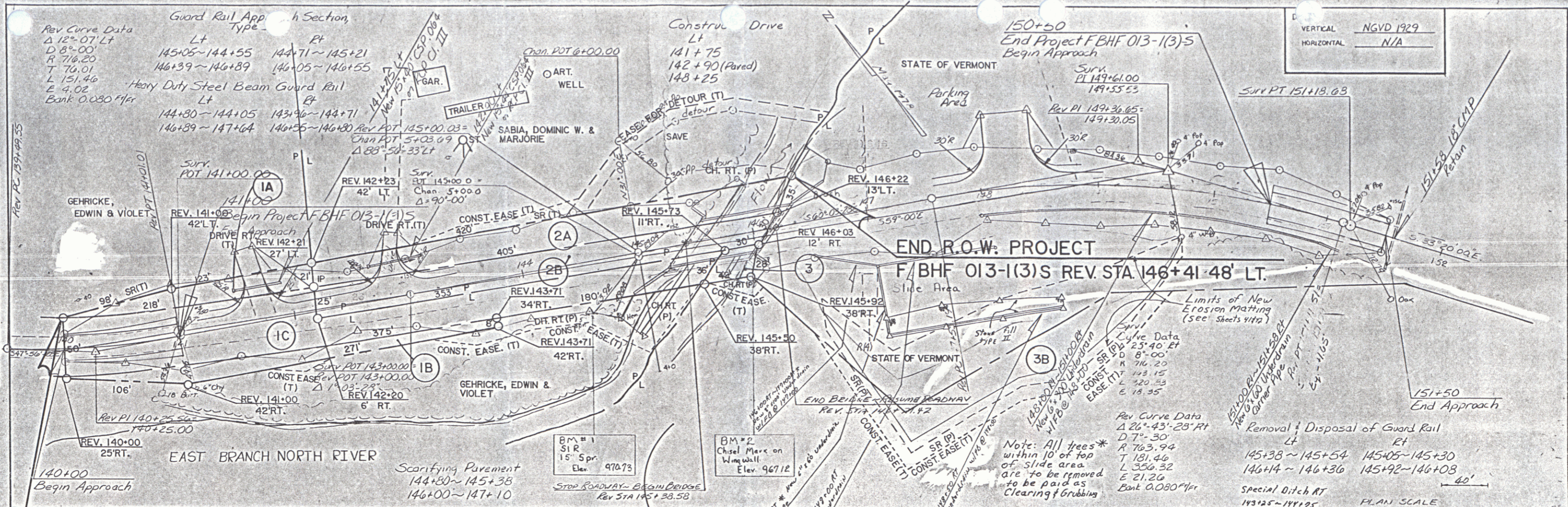
LEGEND

--- CONST. EASE. ---
SR SR SLOPE RIGHTS
P SR PROPERTY LINE
L TOP OF CUT
O O TOE OF SLOPE

R.O.W. PLANS

APPROVED: *[Signature]* DATE: 7-15-87
AGENT D. PLANS & TITLES

HALIFAX
F BHF 013-1(3) S
SHEET 4 OF 5



PLAN

REVISIONS

NO.	DATE	DESCRIPTION

PROFILE

REVISIONS

NO.	DATE	DESCRIPTION

HALIFAX
F BHF 013-1(3)S
SHEET 5 OF 5