

STEEL BEAM GUARD RAIL
 REV 11+86 ~ REV 13+61 LT
 REV 13+92 ~ REV 14+03 RT
 REV 15+70 ~ REV 16+70 LT
 REV 16+26 ~ REV 17+91 RT

CONSTRUCT DRIVES
 REV 9+95 RT (2'-GRAVEL)
 REV 12+40 RT (2'-GRAVEL)
 REV 13+48 RT (2'-GRAVEL)
 REV 17+50 LT (1'-GRAVEL)

GUARD RAIL APPROACH SECTION TYPE I
 REV 13+61 ~ REV 14+11 LT
 REV 14+05 ~ REV 14+55 RT
 REV 15+22 ~ REV 15+70 LT
 REV 15+76 ~ REV 16+26 RT

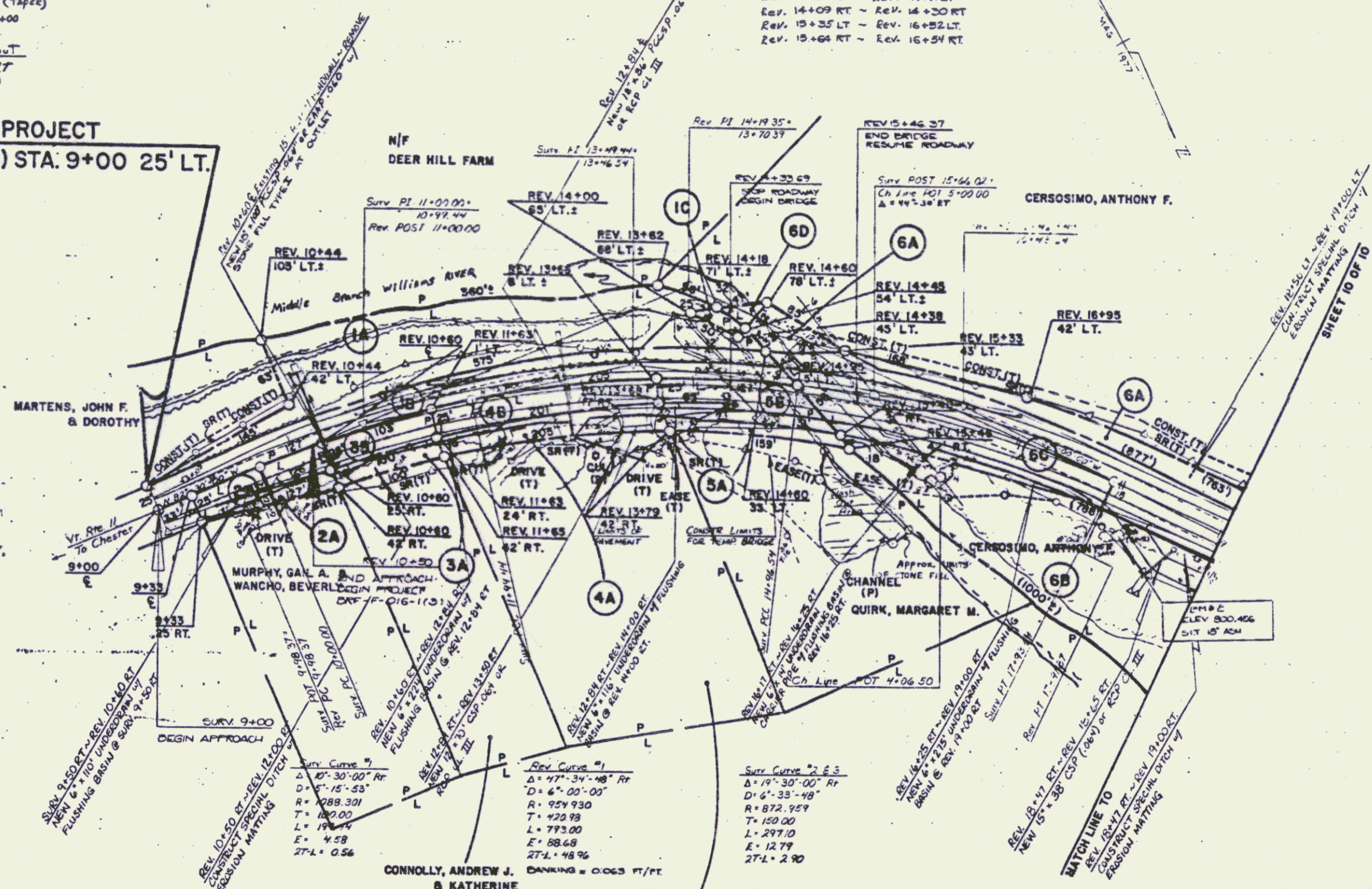
BREAKAWAY CABLE TERMINAL
 REV 11+61 ~ REV 11+56 LT
 REV 16+70 ~ REV 16+95 LT
 REV 17+51 ~ REV 17+76 RT
 REV 13+67 ~ REV 13+92 RT

SAND BORROW
 Surv. 7+20 ~ 7+50 (Tape)
 Surv. 9+50 ~ Rev. 19+00

Construct Turnout
 Rev. 17+70 ~ 19+00 RT
 (See STD. B-17 for Details)

STONE FILL TYPE III
 RT
 REV. 15+27 ~ 16+20 (WASH OUT AREA)

BEGIN R.O.W. PROJECT
BRF FO16-1(3) STA. 9+00 25' LT.



MAR 17 1994

DATUM: NGVD 1929
 VERTICAL: N/A
 HORIZONTAL: N/A

0 50 100
 Scale in Feet

SURVEYED BY: DATE:
 DRAWN BY: DATE:
 TRACED BY: DATE:
CHESTER
BRF FO16-1(3)
 R.O.W. SHEET 9 OF 10 SHEETS