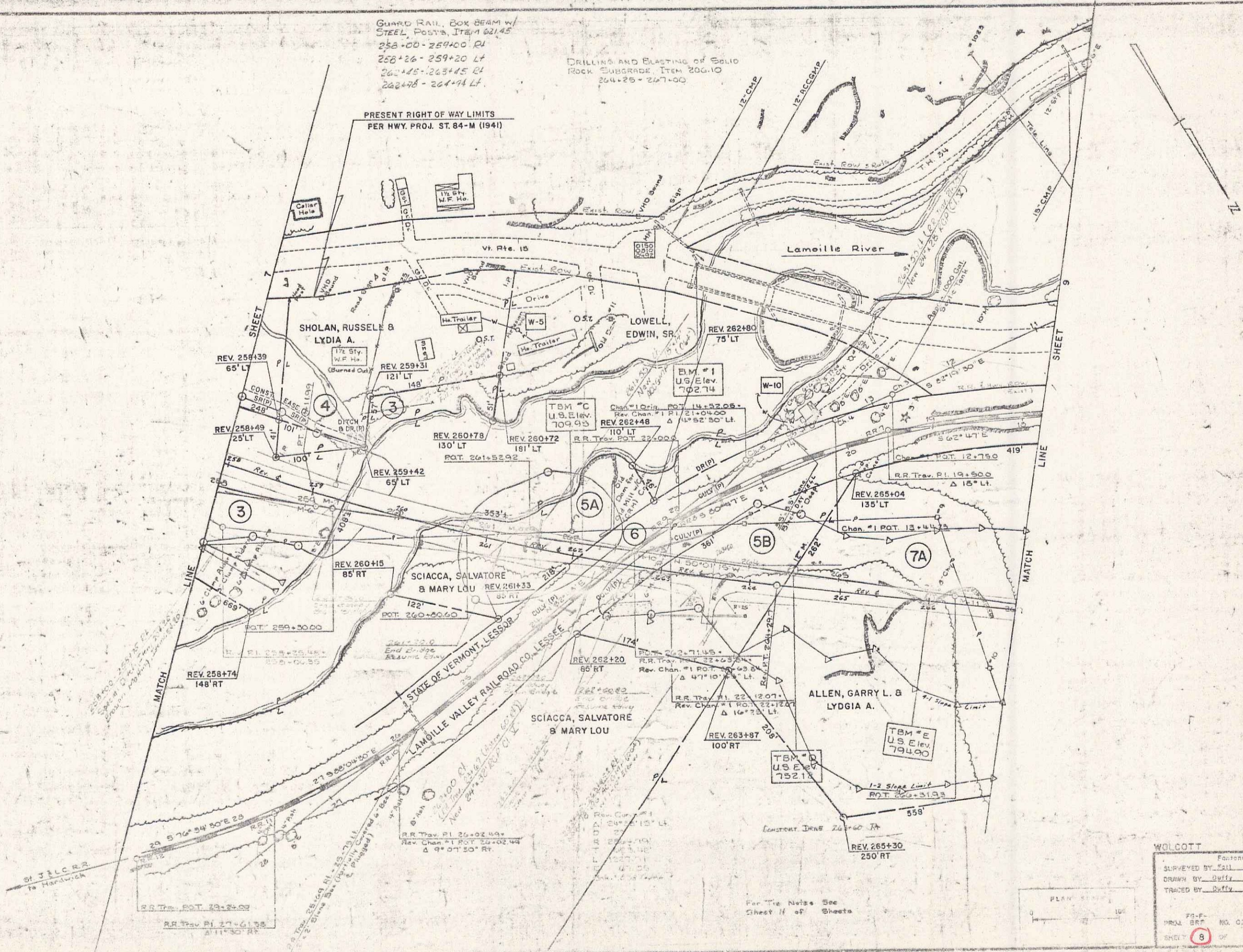


GUARD RAIL, BOX BEAM W/  
STEEL POSTS, ITEM 201.45  
258+00 - 259+00 RT  
258+26 - 259+20 LT  
260+45 - 263+45 RT  
262+78 - 264+74 LT.

DRILLING AND BLASTING OF SOLID  
ROCK SUBGRADE ITEM 200.10  
264+25 - 267+00

PRESENT RIGHT OF WAY LIMITS  
PER HWY. PROJ. ST. 84-M (1941)



WOLCOTT  
SURVEYED BY: Gill DATE: 1/17/44  
DRAWN BY: Duffy DATE: 2/19/44  
TRACED BY: Duffy DATE: 6/7/44  
PROJECT NO. C30-2(4)  
SHEET 8 OF 12