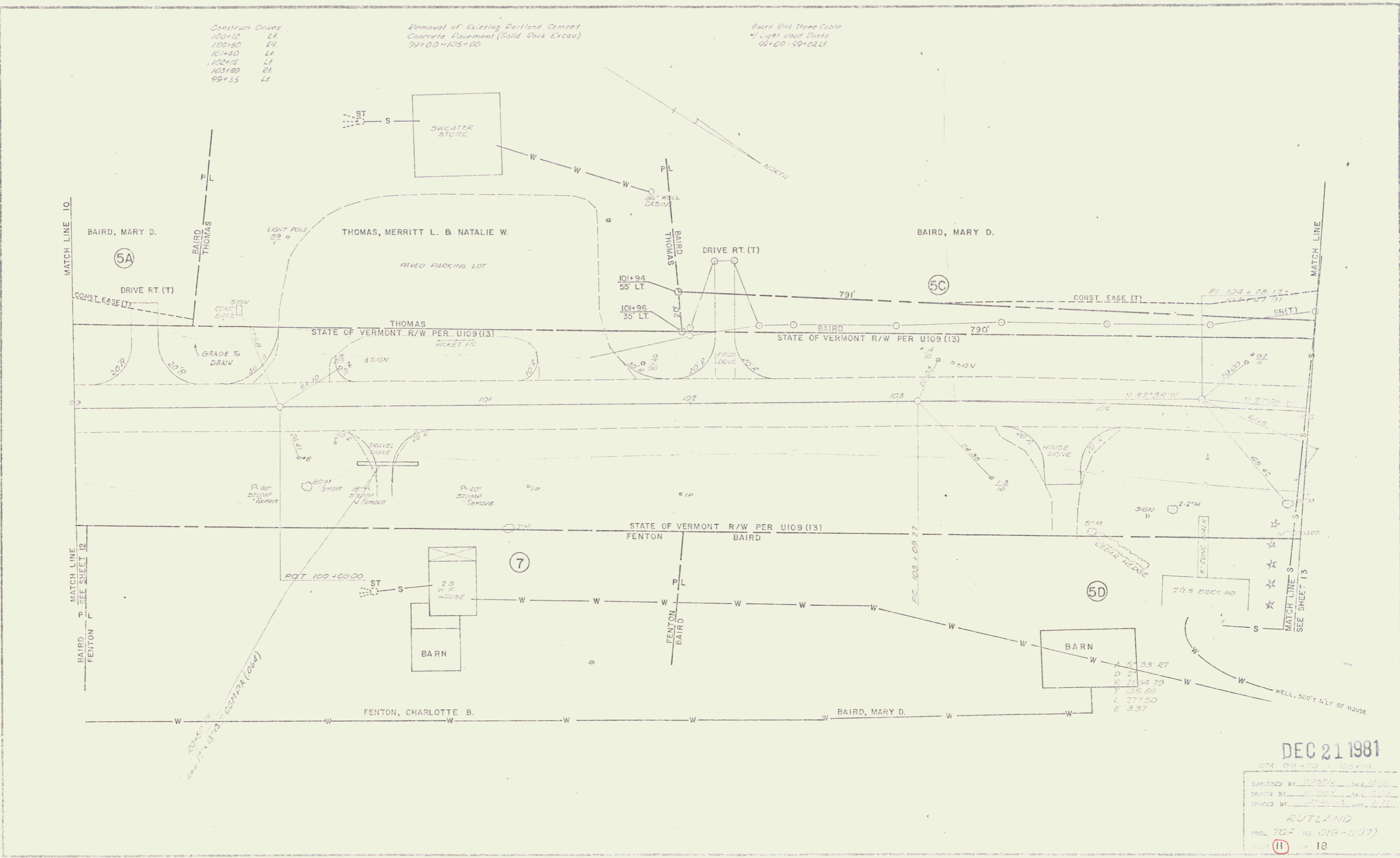


Construct Drives
 100+12 Lt.
 100+80 Rt.
 101+40 Lt.
 102+15 Lt.
 103+80 Rt.
 99+35 Lt.

Removal of Existing Portland Cement
 Concrete Pavement (Solid Rock Excav)
 99+00-105+00

Baird Put Three Cables
 #1 Light Wood Posts
 98+00-99+02 Lt.



DEC 21 1981

074 99+00 - 105+00
 SURVEYED BY: [Signature]
 DRAWN BY: [Signature]
 CHECKED BY: [Signature]
 RUTLAND
 PROJ. 767 NO. 016-5117
 SHEET 11 - 18