

STATE OF VERMONT
AGENCY OF TRANSPORTATION



PROPOSED IMPROVEMENT
TOWN OF POWNAL
COUNTY OF BENNINGTON
U.S. ROUTE 7 [E.A.P.]



BEGINNING AT A POINT ON US ROUTE 7 APPROXIMATELY 0.648 MILES NORTHERLY FROM THE VERMONT-MASSACHUSETTS STATE LINE AND PROCEEDING ALONG US ROUTE 7 NORTHERLY FOR APPROXIMATELY 0.473 MILES.

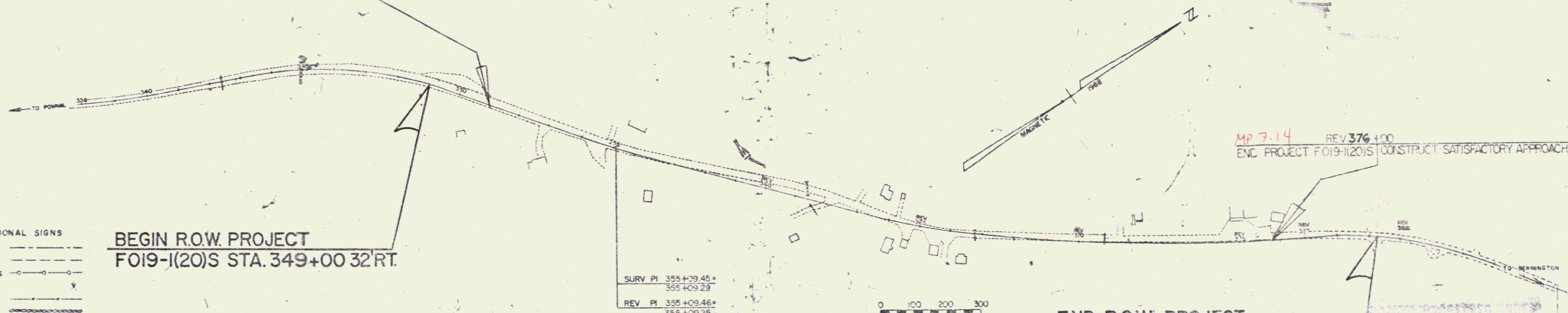
LENGTH OF ROADWAY = 2500 FT = 0.473 MILES
LENGTH OF BRIDGE = 0 FT = 0.000 MILES
LENGTH OF PROJECT = 2500 FT = 0.473 MILES
LENGTH OF R.O.W. PROJECT = 3025 FT = 0.573 MILES

RIGHT-OF-WAY DIVISION
TOWN FILE
PERPETUAL
Town of Pownal
(To Be Returned To R.O.W. Division)

R.O.W. PLANS

WORK TO BE PERFORMED ON THIS PROJECT INCLUDES GRADING, DRAINAGE, SUBBASE AND PAVEMENT GENERALLY ON THE ALIGNMENT OF EXISTING U.S. ROUTE 7.

351+00 MP 6.66
CONSTRUCT SATISFACTORY APPROACH BEGIN PROJECT F 019-1(20)S



BEGIN R.O.W. PROJECT
FO19-1(20)S STA. 349+00 32' RT.

SURV. PI 355+09.45
REV. PI 355+09.29
REV. PI 355+09.46
REV. PI 355+09.25

END R.O.W. PROJECT
FO19-1(20)S STA. REV. 379+25 45' RT.

- CONVENTIONAL SIGNS
- COUNTY LINE
 - TOWN LINE
 - LIMITS OF ACCESS
 - POINT OF ACCESS
 - FENCE LINE
 - STONE WALL
 - TRAVELED WAY
 - GUARD RAIL
 - RAILROAD
 - SURVEY LINE
 - CULVERT
 - POWER POLE
 - TELEPHONE POLE
 - TREES
 - CONTROL OF ACCESS
 - PROPERTY LINE
 - R.O.W. TAKING LINE
 - SLOPE RIGHTS
 - TOP OF CUT
 - TOE OF SLOPE

DATUM
VERTICAL: BCVD - 52.2
HORIZONTAL: N/A

Pin# 76G-152

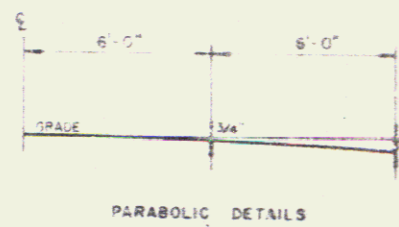
These plans are subject to such engineering changes as may be required by the Federal Highway Administration or the Director of Engineering and Const. Construction is to be done in accordance with these plans and the Standard Specifications for Highway and Bridge Construction dated March, 1971, as approved by the Federal Highway Administration on 1/20/72, for use of this project, including all subsequent revisions and such revised specifications and special provisions as are incorporated in these plans.

APPROVED: _____
CHIEF PROPERTY ADMINISTRATION

APPROVED: _____
DIVISION ADMINISTRATOR

APPROVED: _____
TOWN OF POWNAL
FO19-1(20)S
1 OF 12

7.183



TYPICAL SECTIONS

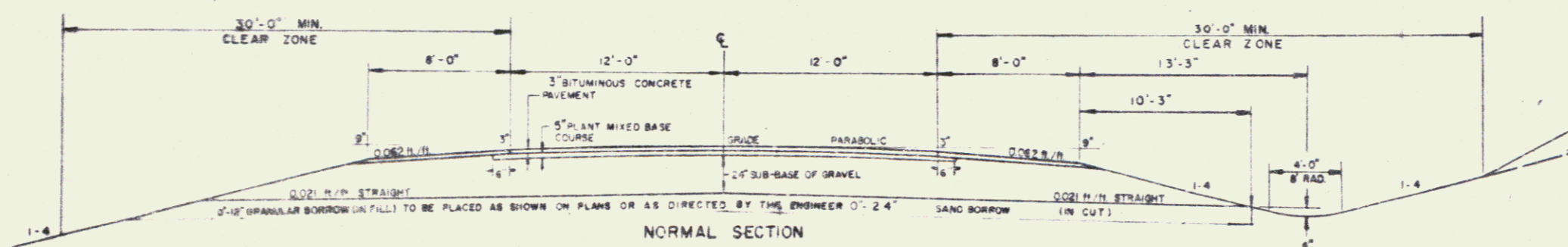
3" BITUMINOUS CONCRETE PAVEMENT, ITEM 406.25 (1/4" WEARING COURSE TYPE III OVER 1 3/4" BINDER COURSE TYPE II)
 5" PLANT MIXED BASE COURSE, ITEM 303.25 (PLACED IN TWO 2-1/2" COURSES)
 SHOULDERS 1/4" BITUMINOUS CONCRETE PAVEMENT ITEM 406.25
 2 1/4" SUBBASE OF GRAVEL, ITEM 301.15
 0"-24" SAND BORROW (IN CUT) ITEM 203.31
 0"-12" GRANULAR BORROW (IN FILL) ITEM 203.32] TO BE PLACED AS NOTED ON THE PLANS OR AS DIRECTED BY THE ENGINEER

GENERAL NOTES

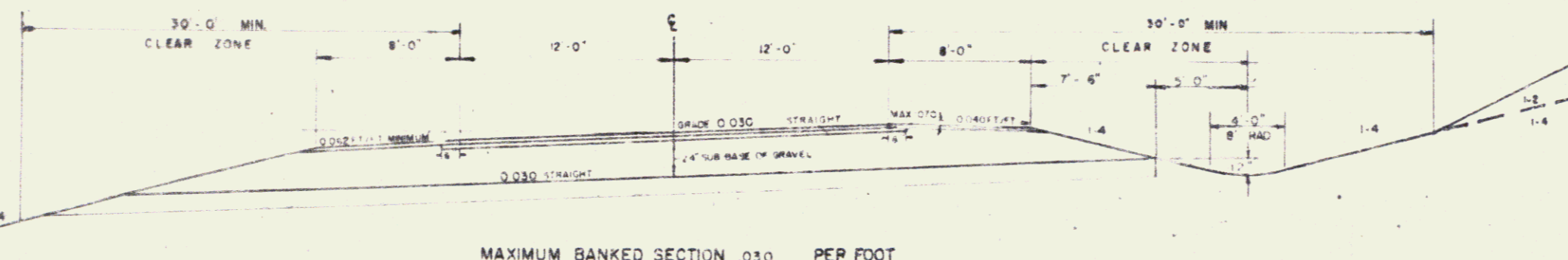
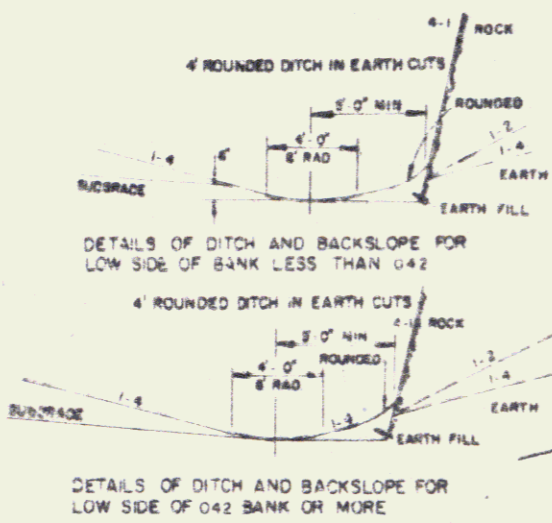
URBAN SEED: ITEM 651.10 TO BE APPLIED AS DIRECTED BY THE ENGINEER

TWT	LBS/A	NAME	PIK% GERM%
37.50	30	CREEPING RED FESCUE (VAR. PENNSYLVANIA)	95 95
3.25	25	KENTUCKY BLUEGRASS (VAR. COMMON)	85 75
3.25	25	PERENNIAL RYE GRASS (VAR. PENNSYLVANIA)	95 90
100.00	80 LBS/ACRE		

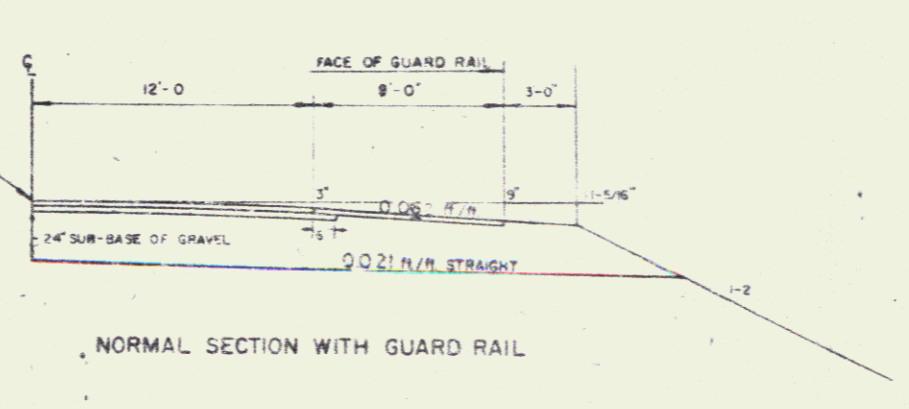
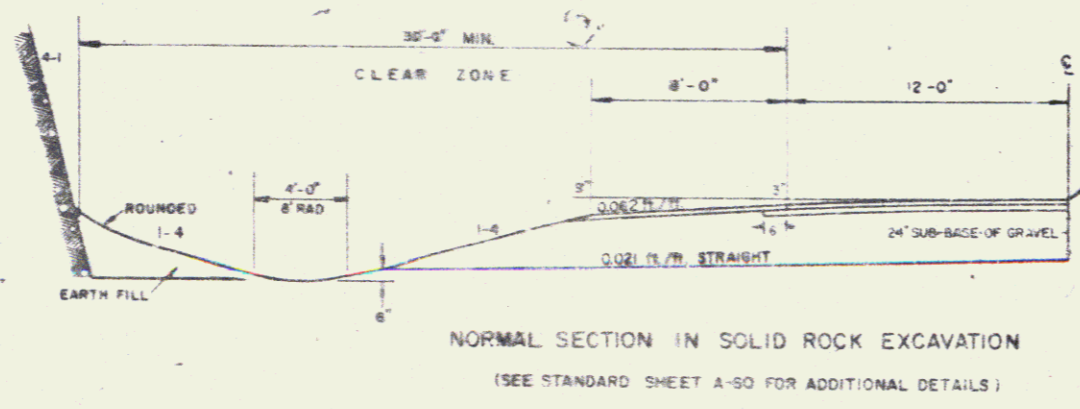
THE SEED MIXTURE SHALL BE FREE OF WEED SEED EXCEEDING 0.40% BY WEIGHT AND SHALL BE FREE OF ALL NOXIOUS WEED SEED.



- MARKER POSTS, WOOD OR STEEL AS SPECIFIED TO BE PLACED AS DIRECTED BY THE ENGINEER
- FERTILIZER, ITEM 651.15 FORMULA 10-20-10 TO BE USED WITH SEED, ITEM 651.10 APPLIED AT THE RATE OF 500 LBS/ACRE
- AGRICULTURAL LIMESTONE, ITEM 651.20 TO BE APPLIED AT RATE OF 2 TONS/ACRE OR AS DIRECTED BY THE ENGINEER
- HAY MULCH, ITEM 651.25 TO BE PLACED ON EARTH SLOPES AT THE RATE OF 2 TONS/ACRE
- TOPSOIL, ITEM 653.10 TO BE USED WITH SEED, ITEM 651.10 IN RESIDENTIAL AREAS, AS DIRECTED BY THE ENGINEER
- SEE STANDARD SHEET D-5 FOR TYPICAL SLOPE ROUNDING
- SEE STANDARD SHEET D-2 FOR PAY LIMITS OF SAND BORROW WHEN USED IN CONJUNCTION WITH UNDERDRAIN
- ALLOWABLE THICKNESS TOLERANCES
 - SUB-BASE ± 1"
 - CONTROLLED MATERIAL ± 1"
 - PAVEMENT ± 1/4"
 - BASE COURSE ± 1/2"



GRANITE SLOPE EDGING DETAIL
 NOT TO SCALE
 SEE STANDARD C-1 FOR DETAILS



TOWN OF POWNAL

STATE OF VERMONT
 DEPARTMENT OF HIGHWAYS

DRAWN BY C.E. Purley TRACED BY Lou Ann
 POWNAL FC19-1(20)S 2 OF 12

TYPICAL SECTIONS

3" BITUMINOUS CONCRETE PAVEMENT, ITEM 406.25 (1-1/4" TYPE III OVER 1-3/4" TYPE II OR AS DIRECTED BY THE ENGINEER.)
 5" PLANT MIXED BASE COURSE, ITEM 303.25 (2 2-1/2" COURSES)
 24" SUB-BASE OF GRAVEL, ITEM 301.15
 SHOULDERS: 1-1/4" BITUMINOUS CONCRETE PAVEMENT, ITEM 406.25
 0"-12" GRANULAR BORROW (IN FILL), ITEM 203.32 AS INDICATED ON THE PLANS OR
 0"-24" SAND BORROW (IN CUT), ITEM 203.31 AS DIRECTED BY THE ENGINEER.

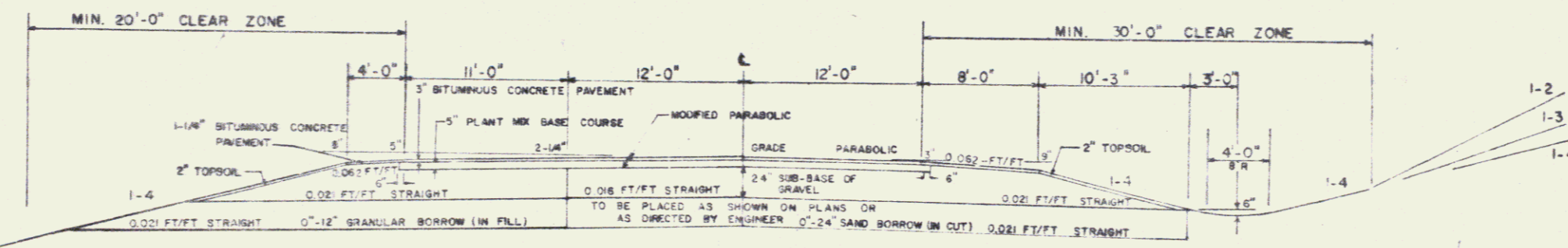
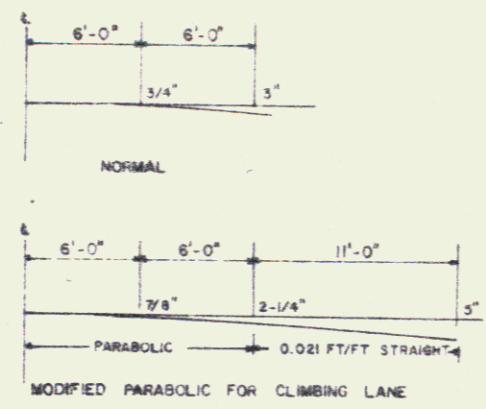
GENERAL NOTES

SEED, ITEM 651.10 TO BE APPLIED AS DIRECTED BY THE ENGINEER			
%WT	LBS/AM	NAME	PUN% GERMIN%
3.33	2	GRASS WETCH	97 75
50.00	30	CREEPING RED FESCUE	96 85
8.33	5	TIMOTHY	99 85
5.00	3	HIGHLAND BENT GRASS	92 85
16.67	10	PERENNIAL RYE GRASS (VAR PENN/PURE)	93 85
8.34	5	ALPACA (VAR. SARAC)	99 85
8.33	5	BIRDFOOT TREFOIL (EMPIRE)	98 85
100	40	LBS/ACRE	

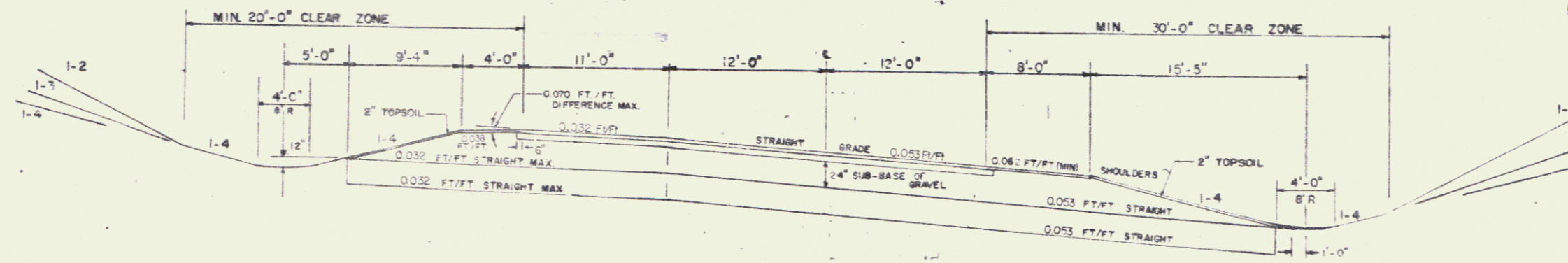
THE SEED MIXTURE SHALL NOT HAVE A WEED CONTENT EXCEEDING 0.40% BY WEIGHT AND SHALL BE FREE FROM ALL NOXIOUS WEED SEED

MARKER POSTS (WOOD OR STEEL AS SPECIFIED) TO BE PLACED AS DIRECTED BY THE ENGINEER
 FERTILIZER, ITEM 651.15 FORMULA 10-20-10 TO BE USED WITH SEED, 1 TONS/ACRE APPLIED AT THE RATE OF 500 LBS/ACRE
 AGRICULTURAL LIMESTONE, ITEM 651.20 TO BE APPLIED AT RATE OF 2 TONS/ACRE OR AS DIRECTED BY THE ENGINEER
 HAY MULCH, ITEM 651.25 TO BE PLACED ON EARTH SLOPES AT THE RATE OF 2 TONS/ACRE
 TOPSOIL, ITEM 651.10 TO BE USED WITH SEED, ITEM 651.10 IN RESIDENTIAL AREAS, AS DIRECTED BY THE ENGINEER
 SEE STANDARD SHEET B-5 FOR TYPICAL SLOPE ROUNDING
 SEE STANDARD SHEET D-2 FOR PAY LIMITS OF SAND BORROW WHEN USED IN CONJUNCTION WITH UNDERDRAIN
 ALLOWABLE THICKNESS TOLERANCES
 SUB-BASE ± 1"
 CONTROLLED MATERIAL ± 1"
 PAVEMENT ± 1/4"
 BASE COURSE ± 1/2"

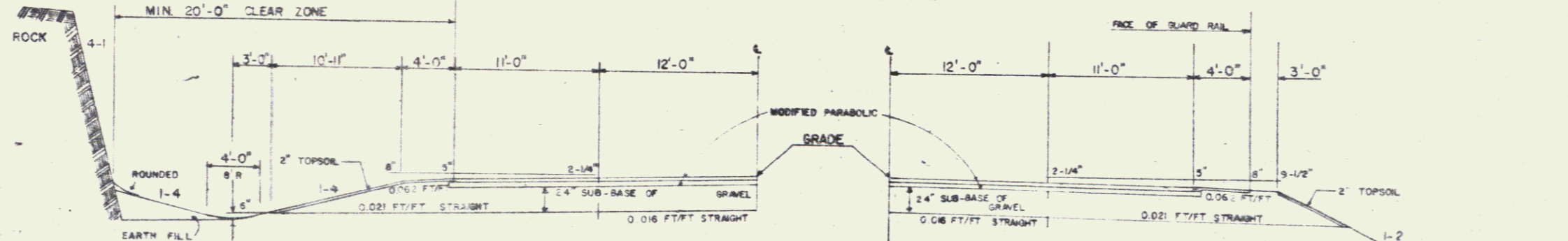
PARABOLIC DETAILS



NORMAL SECTION

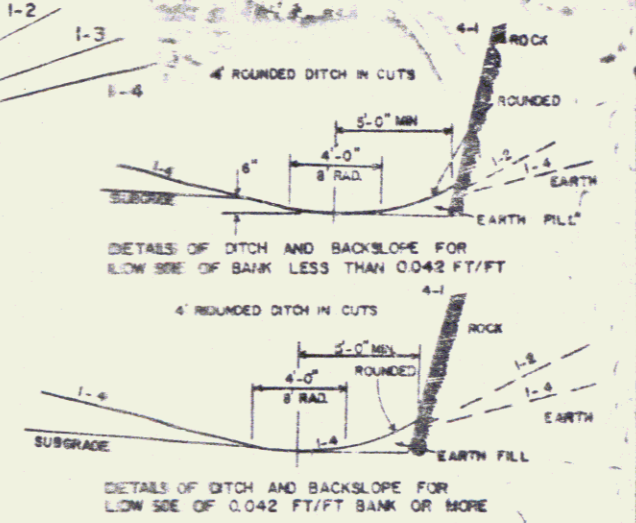


MAXIMUM BANKED SECTION 0.053 FT. PER FOOT
 TRUCK LANE MAXIMUM BANKED SECTION 0.032 FT/FT.



NORMAL SECTION IN SOLID ROCK EXCAVATION
 (SEE STANDARD SHEET A-60 FOR ADDITIONAL DETAILS)

CLIMBING LANE WITH GUARD RAIL



TOWN OF POWNAL

STATE OF VERMONT
 AGENCY OF TRANSPORTATION

DRAWN BY: _____ TRACED BY: _____
 POWNAL F019-1201S (3) of 12

STATE OF VERMONT
AGENCY OF TRANSPORTATION
RIGHT-OF-WAY PLANS
DETAIL SHEET

TABLE OF PROJECT PROPERTY ACQUISITION

PARCEL NO.	GRANTOR	SHEET NO.	BEGINNING STATION	ENDING STATION	TAKING	REM.	RIGHTS	TITLE TAKEN	DATE	TOWN OR CITY RECORDED	BK.	PG.	REMARKS	
1A	MEL, ETHEL M.	10, 11	348+00 RT.	REV. 354+78 RT.	0.21 A±			NO	9-20-84	POWNAH	70	50-50	15' GRAVEL W.P. 06.68 DRIVE PERMIT DATE: 30' GRAVEL W.P. 06.72 DRIVE PERMIT DATE:	
			348+00 RT.	REV. 354+78 RT.		34.79 A±	DRIVE (T)							
			352+00 RT.	REV. 354+68 RT.			DRIVE (T)							
1B			348+00 RT.	REV. 354+05 RT.	1.00 A±		ALL R.T. & L.						HWY. EASE. U.S. RTE. 7	
					TOTAL		1.21 A±	34.79 A±						
2A	BOVIS, GORDIAN P.	10, 11	352+04 LT.	REV. 354+00 LT.	0.05 A±			NO	8-15-84	POWNAH	87	310	(2000 SF±)	
			352+04 LT.	REV. 354+00 LT.		5.88 A±	CONST. EASE. (T) (0.08 A±)							
			352+35 LT.	REV. 354+00 LT.			SLOPE (P) (0.05 A±)							
			352+50 LT.	REV. 353+60 LT.			SLOPE (P) (0.90 SF±)							
2B			348+05 LT.	REV. 354+00 LT.	0.45 A±		ALL R.T. & L.						HWY. EASE. U.S. RTE. 7 15' GRAVEL DRIVE W.P. 06.64 DRIVE PERMIT DATE:	
			350+35 LT.											
					TOTAL		0.50 A±	5.88 A±						
3A	JAMES, STEPHEN E. & KIMBERLY L.	11	REV. 354+83 RT.	REV. 359+27 RT.	0.26 A±			NO	9-20-84	POWNAH	70	50-50	30' GRAVEL W.P. 06.72 DRIVE PERMIT DATE:	
			REV. 354+78 RT.	REV. 358+85 RT.		0.04 A±	DRIVE (T)							
			REV. 354+68 RT.	REV. 358+85 RT.			SLOPE (P) (0.28 A±)							
3B			REV. 354+83 RT.	REV. 358+54 LT.	0.35 A±		ALL R.T. & L.						HWY. EASE. U.S. RTE. 7	
					TOTAL		0.61 A±	0.04 A±						

TABLE OF REVISIONS

REVISION NO.	SHEET NO.	DESCRIPTION OF REVISION	DATE	MADE BY	APPROVED BY
1	1, 5, 10, 11	C.O. # 6014 PARCELS 1, 2, 3, 4 CHANGED PL. TO 54' OF OLD U.S. 7 DRIVE TO PROTECT FROM ABSTRACT TAKE WAYS AND 18' FROM 0.48 A± TO 1.00 A±, 28' FROM 0.21 A± TO 0.55 A±; 38' FROM 0.21 A± TO 0.62 A±; 28' FROM 0.21 A± TO 0.62 A±; 44' FROM 0.48 A± TO 0.55 A±	9-23-83	DEM	LWB
2	10	PARCEL # 2 DRIVE, ADDED SPRINGHOUSE AT STA. 351+00 LT. PER C.O. # 6019	10-25-83	DEM	LWB
3	11	PARCEL # 3 DRIVE, DELETED SPRING AT STA. REV. 356+44 175' RT. PER C.O. # 6019	10-25-83	DEM	LWB
4	11	PARCEL # 4 DRIVE, REVISED TOP OF DRIVE UNDER LINES, + CURB BEGINNING AT REV. STA. 352+00 LT. PER C.O. # 6020	10-25-83	DEM	LWB
5	5, 11	PARCEL # 4 AND DRIVE, REVISED UNDERLYING PL. TO REV. STA. 358+15 LT. TO RT. FROM REV. STA. 356+85 LT. TO RT. + THE AFFECTED STAS. + AREAS; DELETED CURB, BIT, + DR. (B) PER C.O. # 6021	10-25-83	DEM	LWB
6	4, 11	PARCEL # 7 DRIVE, REVISED TOP, ADDED CURB STEPS, MARK, + WALL + BELLY FROM TO LAYOUT + DETAIL SHEET PER C.O. # 6022	10-25-83	DEM	LWB
7	7, 11	PARCEL # 9 FORTIER, RELOCATE STONE WALL AT REV. STA. 347+10 RT. REVISED P/L'S AHEAD CONST. EASE (T) + CHL, BIT, + DR. (B) PER C.O. # 6023	10-25-83	DEM	LWB
8	8	PARCEL # 13 ZACHAR, ADDED ALL R.T. & L. IN PARKING AREA AT STA. REV. 373+60 RT. - 375-30 RT. PER C.O. # 6024	10-25-83	DEM	LWB
9	12	PARCEL # 15-15 ZACHAR, ADDED FENCE + PLANTER TOPS PER C.O. # 6025	10-25-83	DEM	LWB
10	9, 12	PARCEL # 15 + 15A ZACHAR, REVISED TAKE LINES, DELETED TAKE AREA PARCEL 12; REVISED TAKE MARK + REV. PARCEL 15 PER C.O. # 6026	10-25-83	DEM	LWB
11	9, 11	PARCEL # 16 BARKER, DELETED DRIVE PER C.O. # 6027	10-25-83	DEM	LWB
12	11	PARCEL # 7 FORTIER, REMOVE CURB MARK TO REPLACE CURB STEPS AT STA. REV. 363-55 LT. PER C.O. # 6040	10-25-83	DEM	LWB

MADE BY: DEM DATE: 7-28-83
CHECKED BY: JDP DATE: 8-1-83

DR. RT. - DRAINAGE RIGHT
DIT. RT. - DITCHING RIGHT
CH. RT. - CHANNEL RIGHT
DRIVE RT. - DRIVE RIGHT
CUL. RT. - CULVERT RIGHT
⊖ - DEMOLITION OR REMOVAL
W - WATER SOURCES

PRESENT R.O.W.
--- TAKING WITHOUT ACCESS
--- TAKING WITHOUT ACCESS ALONG PROPERTY LINES
--- TAKING WITH ACCESS
(P) PERMANENT EASEMENT
(T) TEMPORARY EASEMENT

LEGEND
--- CONST. EASE
--- SR --- SR --- CONST. EASEMENT SLOPE RIGHTS
--- P --- P --- PROPERTY LINE
--- Δ --- Δ --- TOP OF CUT
--- ○ --- ○ --- TOE OF SLOPE

APPROVED: [Signature] DATE: 9/14/83
CHIEF OF PLANS & TITLES

PROJECT: POWNAH
NO. F019-1(20)S
SHEET 4 OF 12

STATE OF VERMONT
AGENCY OF TRANSPORTATION
RIGHT-OF-WAY PLANS
DETAIL SHEET

TABLE OF PROJECT PROPERTY ACQUISITION

PARCEL NO.	GRANTOR	SHEET NO.	BEGINNING STATION	ENDING STATION	TAKING	REM.	RIGHTS	TITLE TAKEN	DATE	TOWN OR CITY RECORDED	BK.	PG.	REMARKS													
4A	BROWN, ROBERT F. JR. & MARY L. GIETTI, JEAN E	11, 12	REV. 354 + 00 LT.	REV. 361 + 70 LT.	0.35 A±	1801 A±	DRIVE (T)	WD	8-25-84	POWAL	79	1	14' GRAVEL IMP. 04.72 DRIVE PERMIT DATE: 0300 SE±													
			REV. 354 + 00 LT.	REV. 361 + 70 LT.																						
			REV. 354 + 92 LT.																							
			REV. 355 + 00 LT.	REV. 356 + 00 LT.																						
			REV. 356 + 50 LT.	REV. 361 + 71 LT.																						
			REV. 357 + 75 LT.	REV. 358 + 35 LT.																						
			REV. 358 + 14 LT.	REV. 359 + 27 LT.																						
			REV. 360 + 00 LT.	REV. 361 + 45 LT.																						
			REV. 359 + 25 LT.	REV. 361 + 33 LT.																						
			REV. 358 + 40 LT.	REV. 361 + 69 LT.																						
4B			REV. 360 + 18 RT.	REV. 370 + 31 RT.	0.17 A±	1183 A±	SLOPE (T) CONST. EASE. (T)	WD					CONCRETE BARR. (EXCEPT & RESERVE) 1420 SE± WATERLINE WATERLINE													
			REV. 360 + 22 RT.	REV. 370 + 31 RT.																						
			REV. 360 + 22 RT.	REV. 370 + 35 RT.																						
			REV. 360 + 22 RT.	REV. 370 + 37 RT.																						
			REV. 360 + 00 RT.																							
			4C												REV. 364 + 00 LT.	REV. 361 + 70 LT.	0.50 A±		ALL R.T. & L.	WD					14' GRAVEL IMP. 04.80 DRIVE PERMIT DATE:	
															REV. 360 + 15 RT.	REV. 370 + 27 RT.										
															REV. 365 + 91 RT.											
															TOTAL	1.14 A±										31.44 A±
															5A	GARDNER, MILTON A. JR. & BETTY L.										11
REV. 358 + 00 RT.	REV. 361 + 36 RT.																									
REV. 357 + 94 RT.	REV. 361 + 10 RT.																									
REV. 360 + 20 RT.	REV. 361 + 36 RT.																									
REV. 361 + 40 RT.																										
REV. 361 + 45 RT.	REV. 361 + 60 RT.																									
REV. 360 + 51 RT.	REV. 361 + 04 RT.																									
REV. 350 + 27 RT.	REV. 362 + 24 LT.																									
REV. 354 + 00 RT.																										
TOTAL	0.43 A±	1.33 A±																								
5B			REV. 350 + 27 RT.	REV. 362 + 24 LT.	0.16 A±		ALL R.T. & L.	WD					14' GRAVEL IMP. 04.80 DRIVE PERMIT DATE: WATERLINE													
			REV. 354 + 00 RT.																							
			TOTAL	0.43 A±										1.33 A±												
			5C												REV. 354 + 00 RT.		0.43 A±	1.33 A±	ALL R.T. & L.	WD					14' GRAVEL IMP. 04.80 DRIVE PERMIT DATE: WATERLINE	
															REV. 354 + 00 RT.											
															TOTAL	0.43 A±										1.33 A±

TABLE OF REVISIONS

REVISION NO.	SHEET NO.	DESCRIPTION OF REVISION	DATE	MADE BY	APPROVED BY
13	6	PARCEL #6 HATTAT, M.H.; Revised PARCEL #6 FROM 3.74 ASK 2.84 AS PER CO. # 6078	11-17-83	DEM	LWB
14	5, 11	PARCEL #4 BROWN, BUILDING SYSTEM + DELETED 1600' FIELD AT STA. 355+00 - 355+91.17 FROM DETAIL SHEET PER CO. # 6082	11-17-83	DEM	LWB
15	8, 10	PARCEL #12, LEONARD, Added Drive # 22. AS STA. 373+00.28. Per Revised Design 1 C.O. # 6050	11-20-83	B.A.M.	LWB
16	9	PARCEL #3 JONES, Changed Rem. From 0.09 AS TO 0.14 AS PER CO. # 6095	11-30-83	B.A.M.	LWB
17	11	PARCEL #6 HATTAT, REVISED DRIVE AT STA. 378+36.14 RT. PER CO. # 6086	12-11-83	DEM	RS
18	4, 10, 11	PARCEL #2 DAVIS, Deleted Andy B. From TITLE. PER CO. # 6137	2-3-84	DEM	RS
19	7, 11	PARCEL #10 CHEN+LEONARD, Revised Title From CHEN, STANIS+KISS, LEONARD, PATRICK & NAME TO CHEN, STANIS+KISS, LEONARD, NAME; APPROX LEONARD EST; NAME LEONARD. EXCEPT PER CO. # 6138	2-3-84	DEM	RS
20	9, 11	PARCEL #3A JONES, Revised Slope At Sta. Rev. 355+23 AS - Rev. 358+43 AS. 0.35 AS TO Rev. 365+75 AS - Rev. 358+83 AS. 0.31 AS. Deleted Const. Base. (T) Rev. 357+00 AS - Rev. 358+00 AS. Per Revised Design 1 C.O. # 6152	2-21-84	B.A.M.	LWB
21	12	PARCEL #3 ZACHAR, Added Parking AT STA. 374+00 LT. PER CO. # 6241	7-31-84	DEM	LWB
22	10	PARCEL #1 KEIL, Added DRIVE TO 24' AS STA. 353+00.28. Per Revised Design 1 C.O. # 6264	9-12-84	B.A.M.	LWB
23	6, 11	PARCEL #6 HATTAT, Added Const. Slope # 1 AS. To Increase (T) AT STA. 360+76 RT - 361+36 AS. Per Revised Design 1 C.O. # 6210 Plans Given To District 12 - 7-24-84	9-12-84	B.A.M.	LWB

MADE BY: D.F.M. DATE 7-28-83
CHECKED BY: J.D.P. DATE 8-1-83

DR. RT. - DRAINAGE RIGHT
DT. RT. - DITCHING RIGHT
CH. RT. - CHANNEL RIGHT
DRIVE RT. - DRIVE RIGHT
CL. RT. - CULVERT RIGHT
⊕ - DEMOLITION OR REMOVAL
W - WATER SOURCES

PRESENT R.O.W.
--- TAKING WITHOUT ACCESS
--- TAKING WITHOUT ACCESS ALONG PROPERTY LINES
--- TAKING WITH ACCESS
(P) PERMANENT EASEMENT
(T) TEMPORARY EASEMENT

LEGEND
--- CONST. EASE. --- CONST. EASEMENT
SR SR SLOPE RIGHTS
P P PROPERTY LINE
-Δ-Δ-Δ- TOP OF CUT
-○-○-○- TOE OF SLOPE

APPROVED: [Signature] DATE: 8/1/83
CHIEF OF PLANS & TITLES

PROJECT: POWAL
NO. F019-1(20)S
SHEET 5 OF 12

STATE OF VERMONT
AGENCY OF TRANSPORTATION
RIGHT-OF-WAY PLANS
DETAIL SHEET

TABLE OF PROJECT PROPERTY ACQUISITION

PARCEL NO.	GRANTOR	SHEET NO.	BEGINNING STATION	ENDING STATION	TAKING	REM.	RIGHTS	TITLE TAKEN	DATE	TOWN OR CITY RECORDED	BK.	PG.	REMARKS
6	BATTAT, MILTON R. & HELEN M.	11	REV. 301+36 RT.	REV. 302+24 RT.	0.04 A±	2.04 A±	DRIVE (T)	WD	9-28-84	POWNAI	70	114	(800 SF±) 20' GRAVEL IMP. DRIVE DRIVE PERMIT DATE: (3400 SF±) WATERLINE SPRING BOX WATERLINE (500 SF±) CONCRETE STEPS
			REV. 301+38 RT.	REV. 302+24 RT.									
			REV. 301+40 RT.										
			REV. 301+10 RT.	REV. 302+30 RT.									
			REV. 301+85 RT.	REV. 302+00 RT.									
			REV. 302+00 RT.										
			REV. 302+00 RT.	REV. 302+10 RT.									
			REV. 302+00 RT.	REV. 302+10 RT.									
			REV. 302+00 RT.	REV. 302+10 RT.									
			REV. 302+00 RT.	REV. 302+10 RT.									
			REV. 302+00 RT.	REV. 302+10 RT.									
			REV. 302+00 RT.	REV. 302+10 RT.									
			REV. 302+00 RT.	REV. 302+10 RT.									
			REV. 302+00 RT.	REV. 302+10 RT.									
			REV. 302+00 RT.	REV. 302+10 RT.									
7A	FOSTER, JOHN C. & NITH E.	11	REV. 302+67 LT.	REV. 306+10 LT.	0.18 A±	1.04 A±	SLOPE (T) CONST. EASE. (T) DRIVE (T)	WD	8-14-8	POWNAI	70	526	(1320 SF±) (1100 SF±) 14' PAVED IMP. DRIVE DRIVE PERMIT DATE: (1870 SF±) 12' PAVED IMP. DRIVE DRIVE PERMIT DATE: (2300 SF±) (900 SF±) WATERLINE CONC. STEPS & CONC. WALK CONC. WALL WEDGE ROAD CONC. STEPS
			REV. 301+70 LT.	REV. 306+15 LT.									
			REV. 301+70 LT.	REV. 302+85 LT.									
			REV. 301+70 LT.	REV. 302+90 LT.									
			REV. 302+94 LT.										
			REV. 303+85 LT.	REV. 305+00 LT.									
			REV. 304+24 LT.										
			REV. 305+00 LT.	REV. 306+15 LT.									
			REV. 305+00 LT.	REV. 306+11 LT.									
			REV. 305+00 LT.	REV. 306+11 LT.									
			REV. 305+25 LT.	REV. 303+25 LT.									
			REV. 303+55 LT.	REV. 303+60 LT.									
			REV. 304+20 LT.										
			REV. 303+08 LT.	REV. 304+15 LT.									
			REV. 304+10 LT.	REV. 304+20 LT.									
7B			REV. 301+67 LT.	REV. 306+25 LT.	0.28 A±		ALL R.T.&L.						IMP. EASE. H.S. RTE. 7
TOTAL					0.42 A±	1.04 A±							
8A	BATTAT, WILLIAM R. & FLORENCE L.	11	REV. 301+96 RT.	REV. 305+06 RT.	0.10 A±	1.50 A±	SLOPE (T) DRIVE (T)	WD	7-9-84	POWNAI	70	386	(1170 SF±) 20' GRAVEL IMP. DRIVE DRIVE PERMIT DATE: WATERLINE WATERLINE GARAGE SPRING BOX
			REV. 302+24 RT.	REV. 305+06 RT.									
			REV. 302+24 RT.	REV. 303+50 RT.									
			REV. 304+62 RT.										
			REV. 300+25 LT.	REV. 301+67 RT.									
			REV. 301+67 RT.	REV. 303+00 RT.									
			REV. 302+60 RT.	REV. 303+30 RT.									
			REV. 301+67 RT.										

PARCEL 8 CONTINUED ON FOLLOWING SHEET

TABLE OF REVISIONS

REVISION NO.	SHEET NO.	DESCRIPTION OF REVISION	DATE	MADE BY	APPROVED BY

MADE BY: DEM DATE 7-28-83
CHECKED BY: JDP DATE 8-1-83

DR. RT. - DRAINAGE RIGHT
DT. RT. - DITCHING RIGHT
CH. RT. - CHANNEL RIGHT
DRIVE RT. - DRIVE RIGHT
CUL. RT. - CULVERT RIGHT
⊙ - DEMOLITION OR REMOVAL
⊞ - WATER SOURCES

PRESENT R.O.W.
---//---//--- TAKING WITHOUT ACCESS
---P---L--- TAKING WITHOUT ACCESS ALONG PROPERTY LINES
---P--- TAKING WITH ACCESS
(P) PERMANENT EASEMENT
(T) TEMPORARY EASEMENT

LEGEND
--- CONST. EASE. --- CONST. EASEMENT
SR - SR - SLOPE RIGHTS
P - P - PROPERTY LINE
-Δ- Δ -Δ- TOP OF CUT
-○- ○ -○- TOE OF SLOPE

APPROVED [Signature] DATE 8/14/83
CHIEF OF PLANS & TITLES

PROJECT POWNAI
NO. FO19-1(20)S
SHEET 6 OF 12

STATE OF VERMONT
AGENCY OF TRANSPORTATION
RIGHT-OF-WAY PLANS
DETAIL SHEET

TABLE OF PROJECT PROPERTY ACQUISITION

PARCEL NO.	GRANTOR	SHEET NO.	BEGINNING STATION	ENDING STATION	TAKING	REM.	RIGHTS	TITLE TAKEN	DATE	TOWN OR CITY RECORDED	BLK.	PG.	REMARKS
88	PARCEL 8 CONTINUED FROM PREVIOUS SHEET MATTAT, WILLIAM R. & FLORENCE L.	11	REV. 362+00 LT.	REV. 365+05 RT.	0.17 A±		ALL R.T. & L.						HWY. EASE. U.S. RTE. 7
				TOTAL	0.35 A±	1.50 A±							
89	FRICER, JOHN E. & THERESA C.	11	REV. 365+05 RT.	REV. 368+22 RT.	0.14 A±			WD	7-12-84	POWNAH	70	415	
			REV. 365+06 RT.	REV. 368+22 RT.		1.80 A±							28' GRAVEL N.P. 06.82 DRIVE PERMIT DATE: 16' GRAVEL N.P. 06.83 DRIVE PERMIT DATE: (1940 S.F.±) WATERLINE (1300 S.F.±) STONE WALL
			REV. 365+55 RT.				DRIVE (T)						
			REV. 365+59 RT.				DRIVE (T)						
			REV. 366+75 RT.	REV. 368+25 RT.			SLOPE (T)	(0.05 A±)					
			REV. 366+25 LT.	REV. 366+85 RT.			ALL R.T. & L.						
			REV. 366+30 RT.	REV. 368+30 RT.			CONST. EASE. (T)	(0.03 A±)					
			REV. 367+05 RT.	REV. 367+15 RT.									
			REV. 367+06 RT.	REV. 367+06 RT.			CUL., DIT., & DR. (P)						
			REV. 365+02 RT.	REV. 368+18 RT.	0.18 A±		ALL R.T. & L.						HWY. EASE. U.S. RTE. 7 SIGNS
			REV. 366+55 RT.										
				TOTAL	0.32 A±	1.19 A±							
90	CAULO, JAMES & ROSE LORENTI, ANNE LORENTI, PATRICK - ESTATE OF LORENTI, ANNE - EXECUTRIX	11,12	REV. 368+15 LT.	REV. 369+04 LT.	0.10 A±			WD	9-20-84	POWNAH	70	50-54	
			REV. 368+15 LT.	REV. 369+04 LT.		2.40 A±		COND.					(3550 S.F.±) (3250 S.F.±) 14' GRAVEL N.P. 06.85 DRIVE PERMIT DATE: (1150 S.F.±)
			REV. 368+00 LT.	REV. 369+00 LT.			CONST. EASE. (T)	(0.08 A±)					
			REV. 368+12 LT.	REV. 369+37 LT.			SLOPE (T)	(0.07 A±)					
			REV. 367+07 LT.				DRIVE (T)						
			REV. 368+58 LT.	REV. 369+04 LT.			SLOPE (P)	(0.05 A±)					
			REV. 368+19 LT.	REV. 369+72 LT.	0.20 A±		ALL R.T. & L.						HWY. EASE. U.S. RTE. 7 WATERLINE
			REV. 368+20 LT.	REV. 369+70 LT.			ALL R.T. & L.						
				TOTAL	0.30 A±	2.40 A±							
91	GAGNON, RICHARD R. & GRACE E.	12	REV. 369+00 LT.	REV. 373+15 LT.	0.20 A±		ALL R.T. & L.	WD	8-8-84	POWNAH	70	404	
			REV. 369+50 LT.	REV. 370+32 LT.			CONST. EASE. (T)	(0.01 A±)					HWY. EASE. U.S. RTE. 7 (500 S.F.±)
			REV. 369+00 LT.	REV. 369+82 LT.			SLOPE (P)	(1.05 S.F.±)					
			REV. 371+27 LT.				DRIVE (T)						14' PAVED N.P. 07.03 DRIVE PERMIT DATE: WATERLINE
			REV. 372+50 LT.	REV. 373+07 LT.			CONST. EASE. (T)	(.400 S.F.±)					
			REV. 369+25 LT.	REV. 373+10 LT.			ALL R.T. & L.						

TABLE OF REVISIONS

REVISION NO.	SHEET NO.	DESCRIPTION OF REVISION	DATE	MADE BY	APPROVED BY

MADE BY: D.E.M. DATE 7-28-83
CHECKED BY: J.D.P. DATE 8-1-83

DR. RT. - DRAINAGE RIGHT
DIT. RT. - DITCHING RIGHT
CH. RT. - CHANNEL RIGHT
DRIVE RT. - DRIVE RIGHT
CUL. RT. - CULVERT RIGHT
Ⓧ - DEMOLITION OR REMOVAL
Ⓜ - WATER SOURCES

PRESENT R.O.W.
--- TAKING WITHOUT ACCESS
--- TAKING WITHOUT ACCESS ALONG PROPERTY LINES
--- TAKING WITH ACCESS
(P) PERMANENT EASEMENT
(T) TEMPORARY EASEMENT

LEGEND
--- CONST. EASE. --- CONST. EASEMENT
SR SR SLOPE RIGHTS
P P PROPERTY LINE
Δ Δ TOP OF CUT
○ ○ TOE OF SLOPE

APPROVED [Signature] DATE 9/16/85
CHIEF OF PLANS & TITLES

PROJECT POWNAH
NO. F019-1(20)S
SHEET 7 OF 12

STATE OF VERMONT
AGENCY OF TRANSPORTATION
RIGHT-OF-WAY PLANS
DETAIL SHEET

TABLE OF PROJECT PROPERTY ACQUISITION

PARCEL NO.	GRANTOR	SHEET NO.	BEGINNING STATION	ENDING STATION	TAKING	REM	RIGHTS	TITLE TAKEN	DATE	TOWN OR CITY RECORDED	BK.	PG.	REMARKS	
12A	LEONARD, THOMAS F. & LOIS A.	12	REV. 370 + 27 RT.	REV. 374 + 24 RT.	0.37 A±	6.30 A±	SLOPE (T) (0.23 A±) CONST. EASE. (T) (0.09 A±) CUL. DIT. & DR. (P) CUL. DIT. & DR. (P) DRIVE (T)	RD	8-8-84	POWAL	78	400	(4000 S.E.) 14' GRAVEL H.P. 07.08 DRIVE PERMIT DATE	
			REV. 370 + 31 RT.	REV. 374 + 24 RT.										
			REV. 370 + 34 RT.	REV. 374 + 24 RT.										
			REV. 370 + 74 RT.	REV. 374 + 24 RT.										
			REV. 373 + 80 RT.	REV. 374 + 24 RT.										
REV. 373 + 00 RT.														
12B			REV. 370 + 24 LT.	REV. 374 + 24 RT.	0.23 A±		ALL R.T. & L.							Hwy. EASE. US. RTE. 7
			TOTAL		0.60 A±	6.30 A±								
12A	DELETED													
13B	ZACHER, RICHARD M. (LESSOR) ROCK MAPLE GIFT SHOP (LESSEE)	12	REV. 373 + 07 LT.	REV. 375 + 72 LT.	0.16 A±	16.00 A±	ALL R.T. & L. CONST. EASE. (T) (0.02 A±) SLOPE (T) (40 S.E.) DRIVE (T)	OPE	7-12-84	POWAL	79	233	Hwy. EASE. US. RTE. 7 (1000 S.E.) 30' GRAVEL H.P. 07.09 DRIVE PERMIT DATE: 30' GRAVEL H.P. 07.11 DRIVE PERMIT DATE: WATERLINE PARKING AREA	
			REV. 373 + 05 LT.	REV. 374 + 30 LT.										
			REV. 373 + 78 LT.	REV. 374 + 12 LT.										
			REV. 374 + 55 LT.											
			REV. 375 + 25 LT.											
REV. 373 + 40 RT.	REV. 375 + 30 RT.													
TOTAL				0.16 A±	16.00 A±									
14A	BESHARA, JAMIE N.	12	REV. 374 + 24 RT.	REV. 375 + 25 RT.	0.31 A±	5.87 A±	SLOPE (T) (0.12 A±) CONST. EASE. (T) (0.08 A±) DRIVE (T) CUL. DIT. & DR. (P)	RD	8-14-84	POWAL	78	519	(3700 S.E.) 20' GRAVEL H.P. 07.10 DRIVE PERMIT DATE:	
			REV. 374 + 24 RT.	REV. 375 + 25 RT.										
			REV. 374 + 24 RT.	REV. 377 + 50 RT.										
			REV. 374 + 24 RT.	REV. 378 + 30 RT.										
			REV. 375 + 00 RT.											
REV. 375 + 55 RT.														
14B			REV. 374 + 24 RT.	REV. 378 + 18 RT.	0.28 A±		ALL R.T. & L.							Hwy. EASE. US. RTE. 7
			TOTAL		0.59 A±	5.87 A±								

TABLE OF REVISIONS

REVISION NO.	SHEET NO.	DESCRIPTION OF REVISION	DATE	MADE BY	APPROVED BY

MADE BY: DEM DATE 7-28-83
CHECKED BY: JDP DATE 8-1-83

DR. RT. - DRAINAGE RIGHT
DT. RT. - DITCHING RIGHT
CH. RT. - CHANNEL RIGHT
DRIVE RT. - DRIVE RIGHT
CUL. RT. - CULVERT RIGHT
⊙ - DEMOLITION OR REMOVAL
W - WATER SOURCES

----- PRESENT R.O.W.
- - - - - TAKING WITHOUT ACCESS
- - - - - TAKING WITHOUT ACCESS ALONG PROPERTY LINES
- - - - - TAKING WITH ACCESS
(P) PERMANENT EASEMENT
(T) TEMPORARY EASEMENT

LEGEND
----- CONST. EASE. ----- CONST. EASEMENT
SR - SR - SLOPE RIGHTS
P - P - PROPERTY LINE
-Δ-Δ-Δ- TOP OF CUT
-○-○-○- TOE OF SLOPE

APPROVED L. W. P. DATE 8/14/83
CHIEF OF PLANS & TITLES

PROJECT POWAL
NO. F019-1(2)S
SHEET 8 OF 12

STATE OF VERMONT
AGENCY OF TRANSPORTATION
RIGHT-OF-WAY PLANS
DETAIL SHEET

TABLE OF PROJECT PROPERTY ACQUISITION

PARCEL NO.	GRANTOR	SHEET NO.	BEGINNING STATION	ENDING STATION	TAKING	REM.	RIGHTS	TITLE TAKEN	DATE	TOWN OR CITY RECORDED	BK.	PG.	REMARKS
15A	ZACHER, LINDA N. & RICHARD N.	12	REV. 376 + 85 LT.	REV. 379 + 18 LT.	0.03 A±	1.97 A±	DRIVE (T) ALL R.T. & L.	OPE	7-12-84	POWAL	79	237	(1200 SF±) 14" GRAVEL HP 07.02 DRIVE PERMIT DATE: WATERLINE
			REV. 375 + 72 LT.	REV. 379 + 15 LT.									
			REV. 375 + 87 LT.										
			REV. 369 + 25 LT.	REV. 375 + 90 LT.									
15B			REV. 375 + 72 LT.	REV. 379 + 25 RT.	0.20 A±	1.97 A±	ALL R.T. & L.						HWY. EASE. US RTE. 7
			TOTAL										
16	DELETED												FORMERLY BAKER, RICHARD
17	CENTRAL VERMONT PUBLIC SERVICE CORP.												UTILITY
18	NEW ENGLAND TELEPHONE & TELEGRAPH												UTILITY

TABLE OF REVISIONS

REVISION NO.	SHEET NO.	DESCRIPTION OF REVISION	DATE	MADE BY	APPROVED BY

MADE BY: D.E.M. DATE 7-28-83
CHECKED BY: JDP DATE 8-1-83

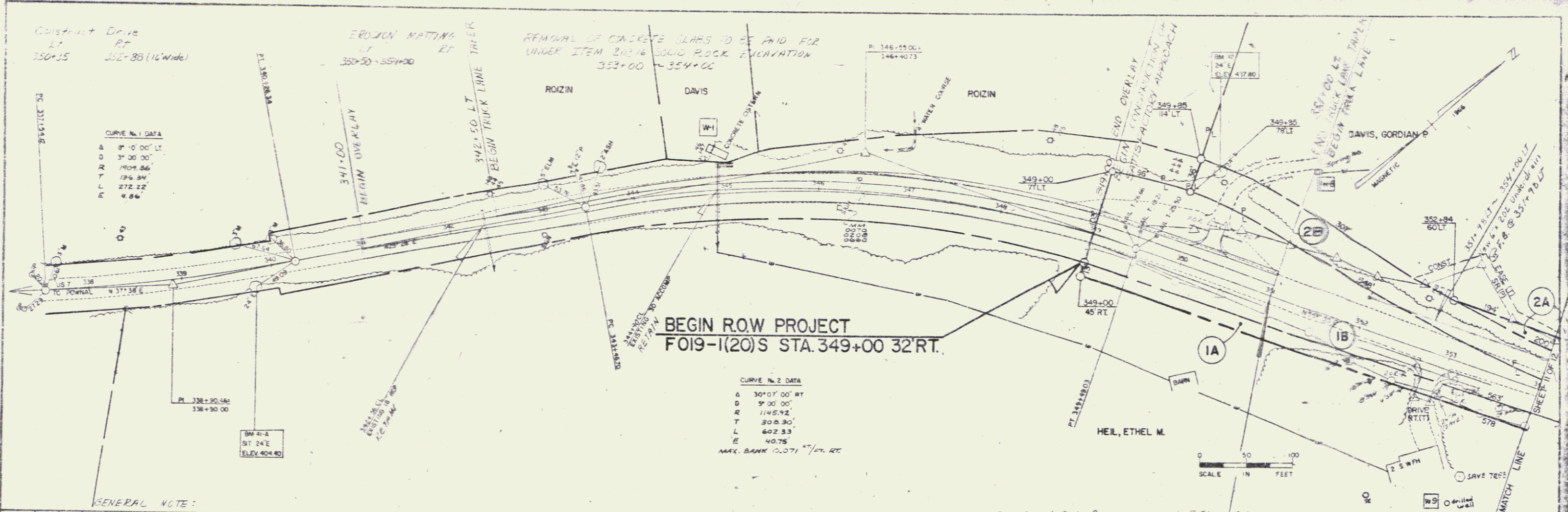
DR. RT - DRAINAGE RIGHT
DIT. RT - DITCHING RIGHT
CH. RT - CHANNEL RIGHT
DRIVE RT - DRIVE RIGHT
CUL. RT - CULVERT RIGHT
ⓓ - DEMOLITION OR REMOVAL
Ⓜ - WATER SOURCES

PRESENT R.O.W.
--- TAKING WITHOUT ACCESS
--- P --- TAKING WITHOUT ACCESS ALONG PROPERTY LINES
--- TAKING WITH ACCESS
(P) PERMANENT EASEMENT
(T) TEMPORARY EASEMENT

LEGEND
--- CONST. EASE --- CONST. EASEMENT
SR --- SR --- SLOPE RIGHTS
P --- P --- PROPERTY LINE
--- Δ --- TOP OF CUT
--- ○ --- TOE OF SLOPE

APPROVED *L. Blin* DATE 8/14/83
CHIEF OF PLANS & TITLES

PROJECT POWNAL
NO. FO19-1(20)S
SHEET 9 OF 12



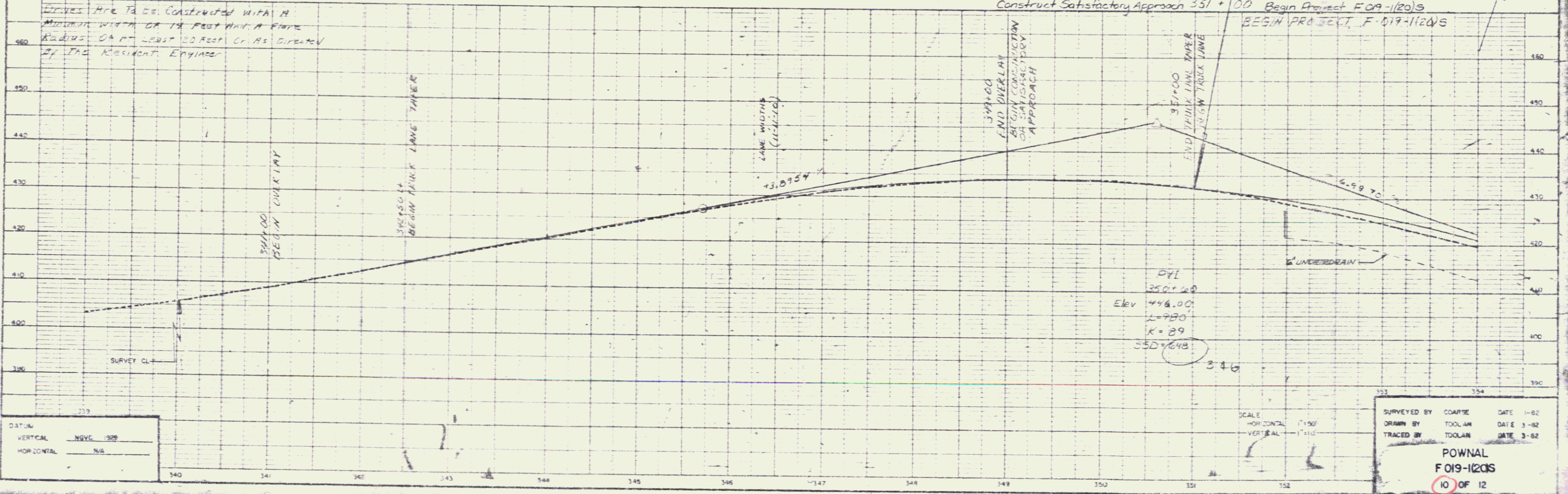
CURVE No. 1 DATA
 Δ 8° 10' 00" LT
 D 3° 30' 00"
 R 1901.86
 T 176.84
 L 272.22
 E 4.66

BEGIN R.O.W PROJECT
 FO19-1(20)S STA. 349+00 32 RT.

CURVE No. 2 DATA
 Δ 30° 07' 00" RT
 D 5° 00' 00"
 R 1145.92
 T 300.30
 L 602.33
 E 40.75
 MAX. BANK 0.071 ¹/_{FL. RT.}

GENERAL NOTE:

Drives are to be constructed with a minimum width of 14 feet with a flare radius of at least 20 feet. Check directly of the Resident Engineer.

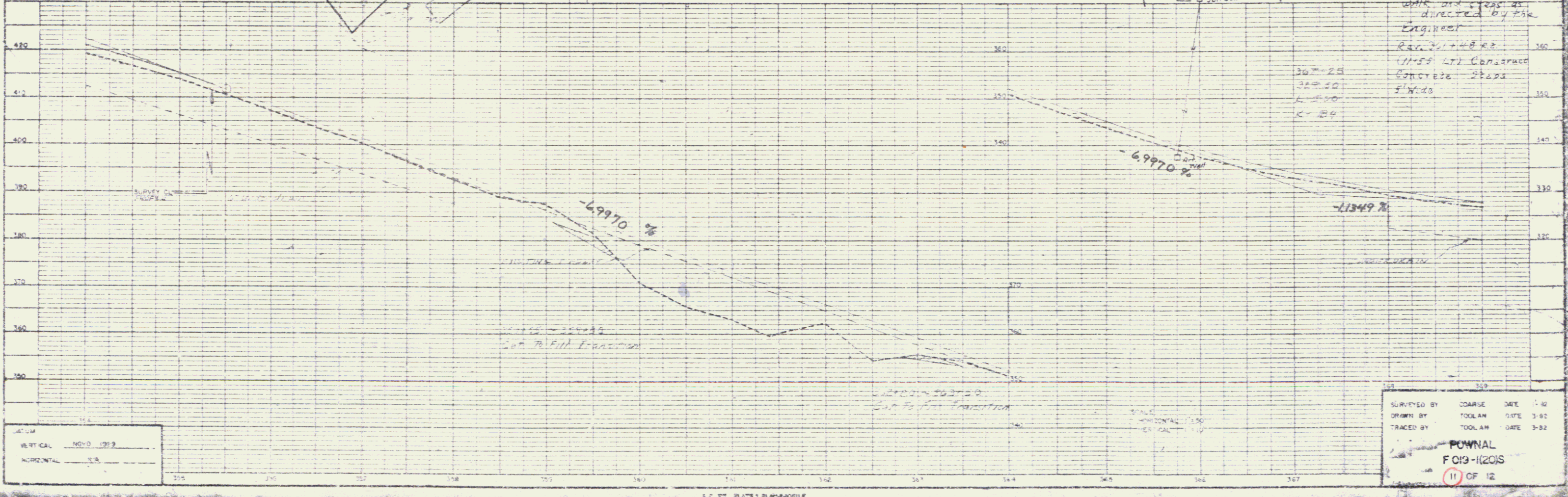
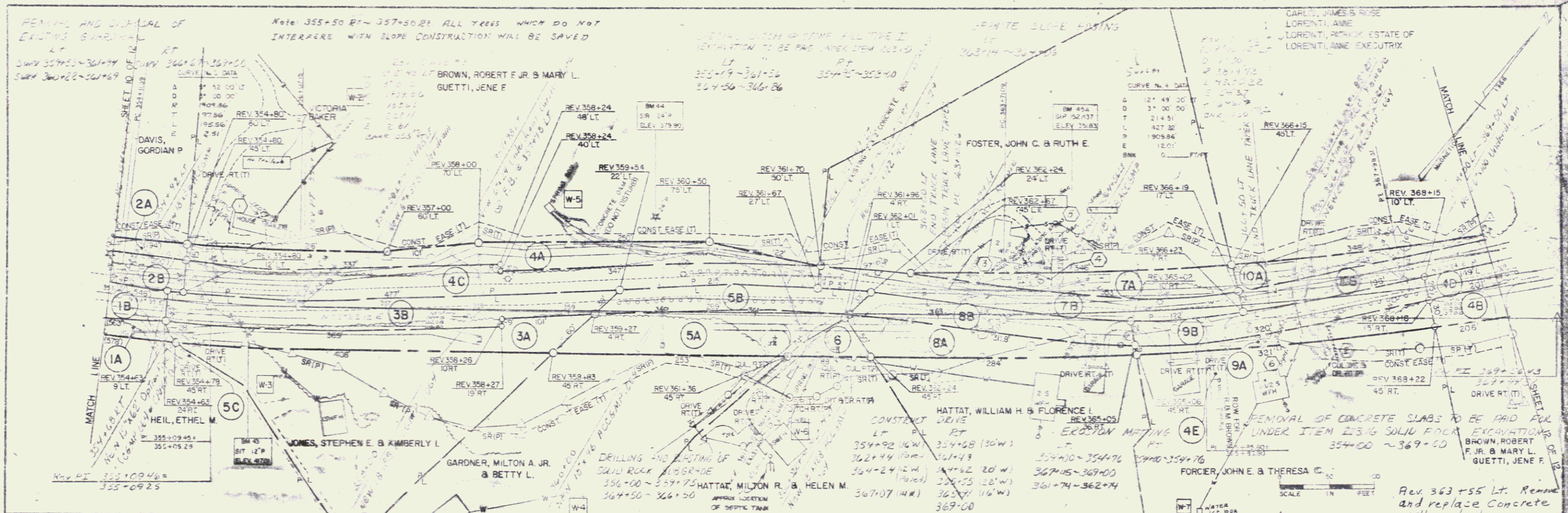


PVI
 350+20
 Elev 446.00
 L=346
 K=29
 SSD=248

DATUM
 VERTICAL NGVD 1929
 HORIZONTAL NAD 83

SCALE
 HORZONTAL 1"=50'
 VERTICAL 1"=10'

SURVEYED BY COARSE DATE 1-82
 DRAWN BY TOOLAN DATE 3-82
 TRACED BY TOOLAN DATE 3-82
 POWNAL
 F 019-1(20)S
 10 OF 12



PLAN
 1:1
 1/4" = 10'

PROFILE
 1:1
 1/4" = 10'

VERTICAL 1:1
 HORIZONTAL 1:1

SURVEYED BY COARSE DATE 3-82
 DRAWN BY TOULAN DATE 3-82
 TRACED BY TOULAN DATE 3-82
 POWNAL
 F019-1(2015)
 11 OF 12

