

INDEX OF SHEETS

- Title Sheet
- Typical
- Drainage and Item Quantity
- Grade and Earthworks
- Plan and Profile

8-12. Blank

- A-60 Slopes in Solid Rock Excavation (S.O.M.R.H. 40m) 4-20-73R
- B-5 Typical Slope Rounding 12-6-71
- B-13 Drive Intersections 12-14-71
- D-2 C.R.M. Headwalls, Underdrain, and Underdrain Carrier Pipe Details 12-16-76R
- D-4 Waterfall, Corrugated Pipe Elbow, and Underdrain Flushing Basin 7-24-75R
- D-6 Reinforced Concrete Drop Inlet "B" 4-4-73
- D-11 Cast Iron Grate, Type A 4-25-72R
- E-2 Road Construction Approach Signs 12-15-78R
- E-6 On Project Construction Signs 12-15-78R
- E-7 Delineation and Barricades For Construction Areas 9-5-70R
- E-10W Sign Padicle For Flagperson 11-18-77R
- Blank
- G-1 Guard Rail, Standard Steel Beam With Wood Posts, Type II 6-1-78R
- G-1d Guard Rail, Standard Steel Beam With Wood Posts, Type II 9-12-77R
- G-4 Guard Rail, Plank w/ Wood Posts and Wood Marker Posts 5-23-74R
- G-4A Guard Rail, Three Cable "Light Wood Posts" 4-17-73R
- G-14 Breakaway Cable Terminal For Guard Rail, Steel Beam w/ Wood Posts, Type II 4-21-77R
- J-1 Boundary Markers 12-6-71
- F-1 Temporary Erosion Control Details 12-7-76R
- F-2 Temporary Erosion Control Details 7-5-78

32. Detail Sheet for 18' C&M of Station 1+00

31. Cross Sections, Main Line

STATE OF VERMONT
AGENCY OF TRANSPORTATION



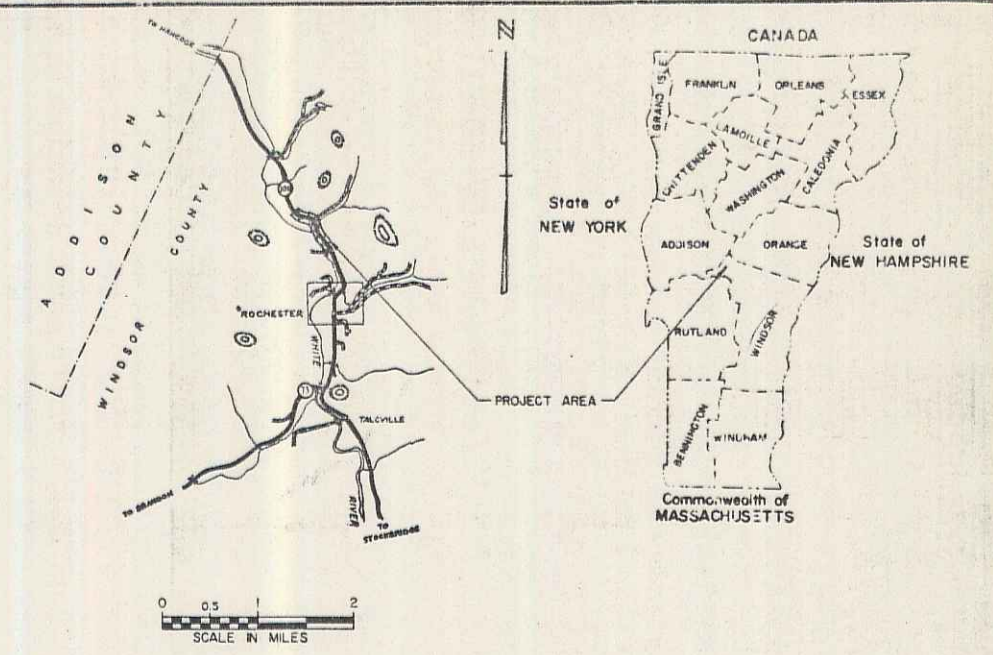
PROPOSED IMPROVEMENT
TOWN OF ROCHESTER
COUNTY OF WINDSOR
VT. ROUTE 100

BEGINNING AT A POINT APPROXIMATELY 2.330 MILES SOUTHEASTERLY OF THE ROCHESTER-HANCOCK TOWN LINE AND EXTENDING NORTH-WESTERLY 0.426 MILES.

LENGTH OF PROJECT 2250 Ft = 0.426 MILES
LENGTH OF ROW PROJECT 2711 FT = .513 MILES

TRAFFIC DATA

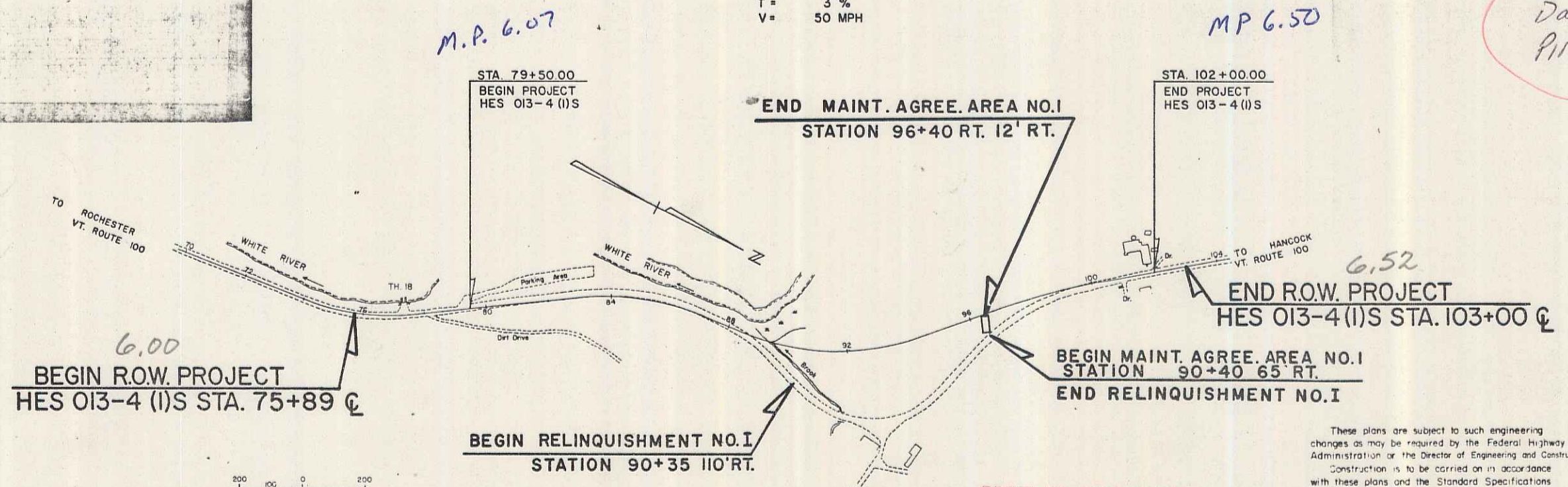
1980 ADT =	2230 (Est)
2000 ADT =	3640 (Est)
2000 DHV =	575 (Est)
D =	50 %
T =	3 %
V =	50 MPH



R.O.W. PLANS

CONVENTIONAL SIGNS

COUNTY LINE	---
TOWN LINE	- - - -
LIMITS OF ACCESS	○
POINT OF ACCESS	X
FENCE LINE	— · — · —
STONE WALL	— · — · —
TRAVELED WAY	— · — · —
GUARD RAIL	— · — · —
RAILROAD	— · — · —
SURVEY LINE	— · — · —
CULVERT	— · — · —
POWER POLE	○
TELEPHONE POLE	○
TREES	○
CONTROL OF ACCESS	— · — · —
PROPERTY LINE	— · — · —
ROW TAKING LINE	— · — · —
SLOPE RIGHTS	— · — · —
TOP OF CUT	— · — · —
TOE OF SLOPE	— · — · —



RIGHT-OF-WAY DIVISION
TOWN FILE
PERPETUAL
Town of _____
(To Be Returned To R.O.W. Division)

These plans are subject to such engineering changes as may be required by the Federal Highway Administration or the Director of Engineering and Construction. Construction is to be carried on in accordance with these plans and the Standard Specifications for Highway and Bridge Construction dated March, 1976, as approved by the Federal Highway Administration on October 27, 1976 for use on this project including all subsequent revisions and such revised specifications and special provisions as are incorporated in these plans.

APPROVED: _____ DATE 12-24-79
CHIEF, PROPERTY ADMINISTRATION

PROJECT PROCESSED UNDER
SECONDARY ROAD PLAN

SUBMITTED BY ORDER OF THE STATE TRANSPORTATION BOARD

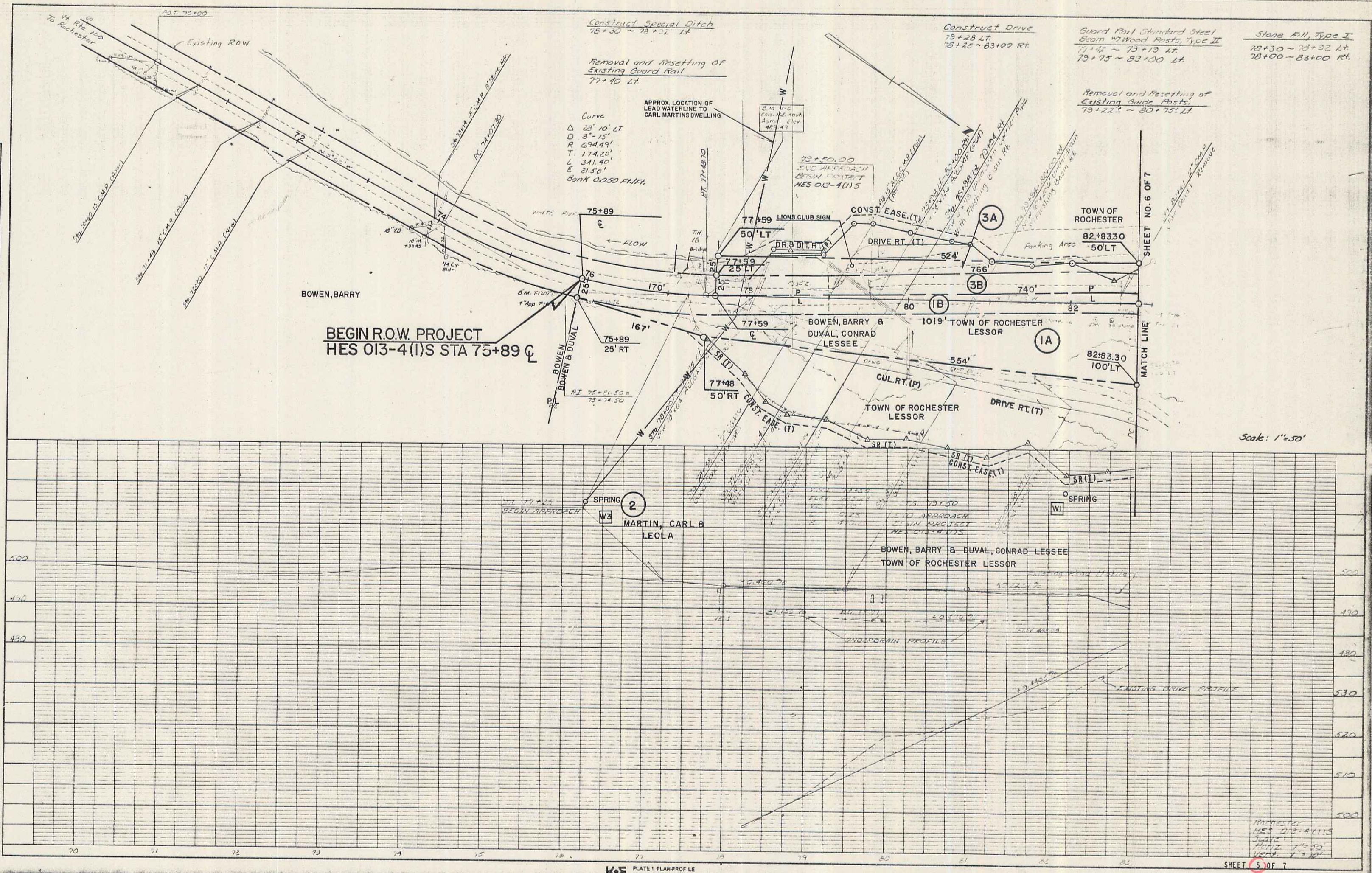
APPROVED: _____ DATE OCT 24 1979
DIRECTOR OF ENGINEERING AND CONSTRUCTION

DEPARTMENT OF TRANSPORTATION
FEDERAL HIGHWAY ADMINISTRATION

PROJECT HES NO 013-4 (I)S
SHEET 1 OF 7 SHEETS
SRS 12/17/70

PLAN
 DATE: 5/27/72
 DRAWN BY: J. J. [unclear]
 CHECKED BY: [unclear]
 PROJECT: [unclear]
 SHEET NO. 5 OF 7

PROFILE
 DATE: 5/27/72
 DRAWN BY: J. J. [unclear]
 CHECKED BY: [unclear]
 PROJECT: [unclear]
 SHEET NO. 5 OF 7



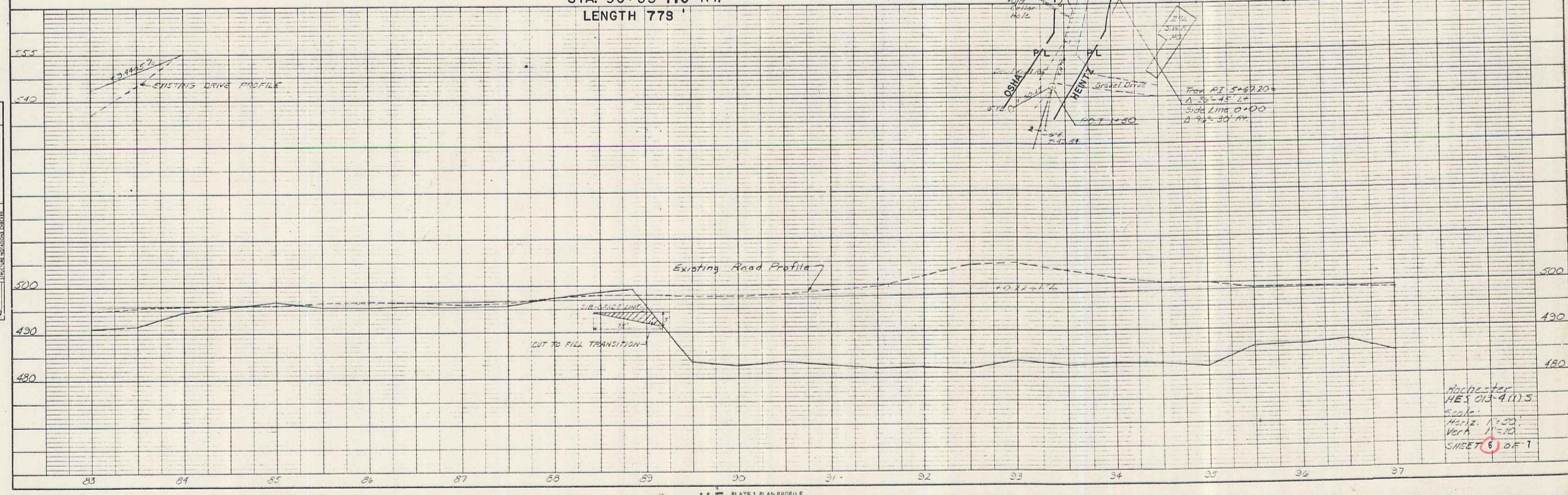
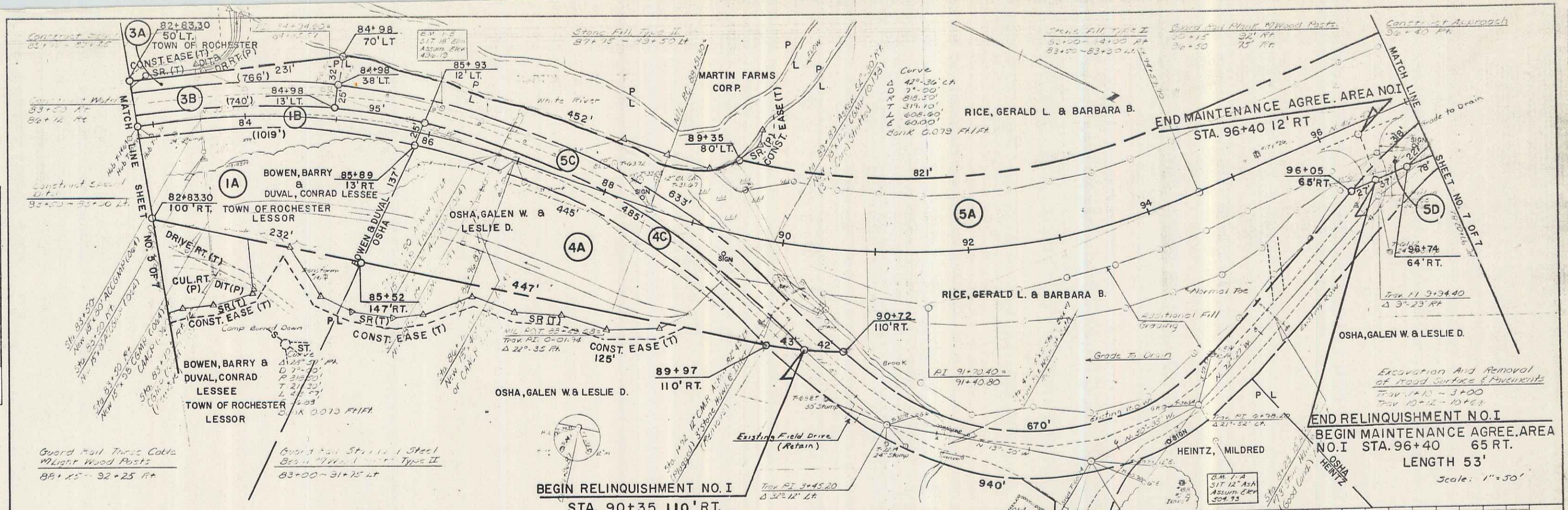
K&E PLATE 1 PLAN-PROFILE
 PRINTED BY [unclear]

SHEET 5 OF 7

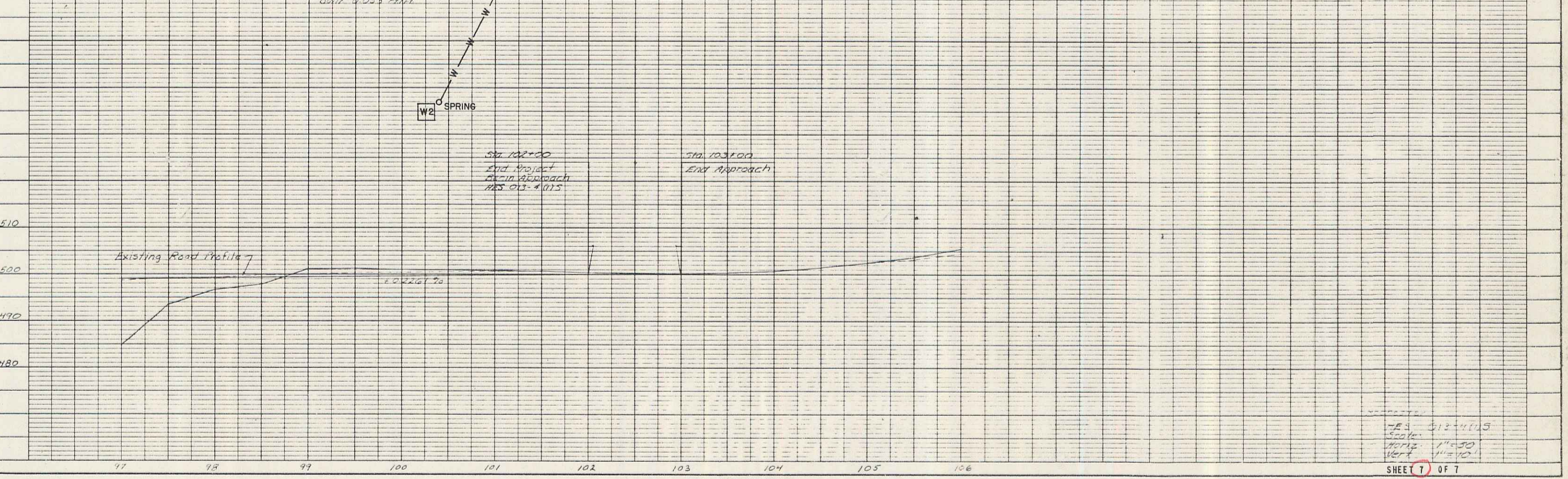
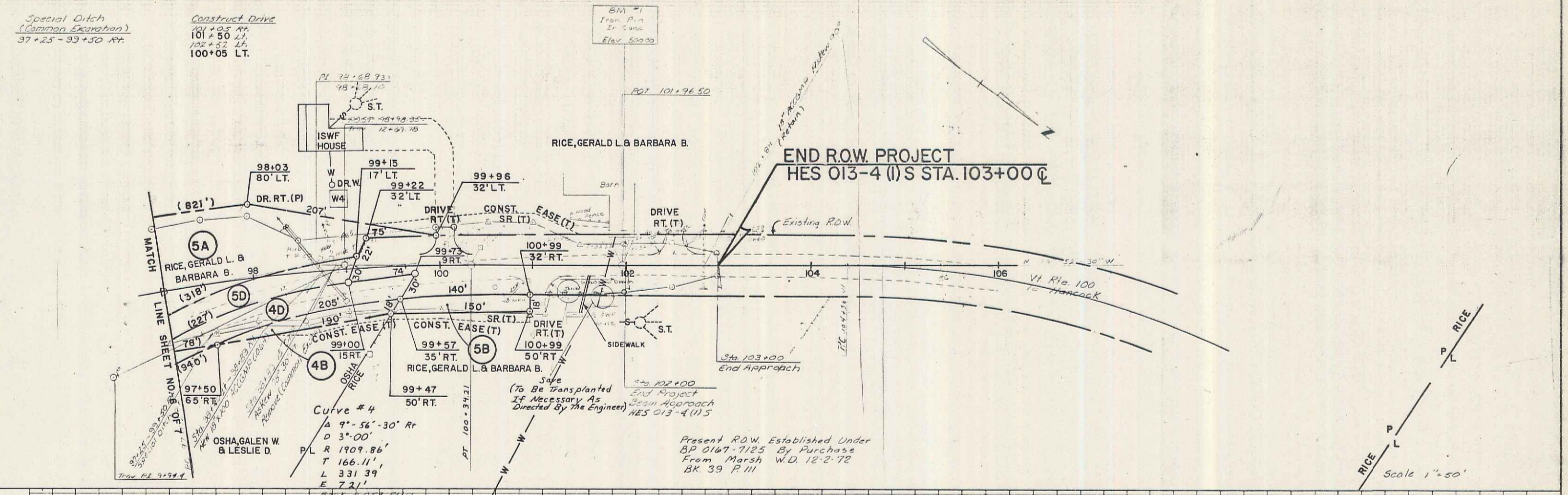
2

PLAN
 DATE: _____
 DRAWN BY: _____
 CHECKED BY: _____
 TITLE: _____

PROFILE
 DATE: _____
 DRAWN BY: _____
 CHECKED BY: _____
 TITLE: _____



Rochester
 HES 013-4(1) S
 Scale 1"=30'
 Ver. A 11-10
 SHEET 6 OF 1



PLAN
DATE
BY
CHECKED
DATE
BY

PROFILE
DATE
BY
CHECKED
DATE
BY

4